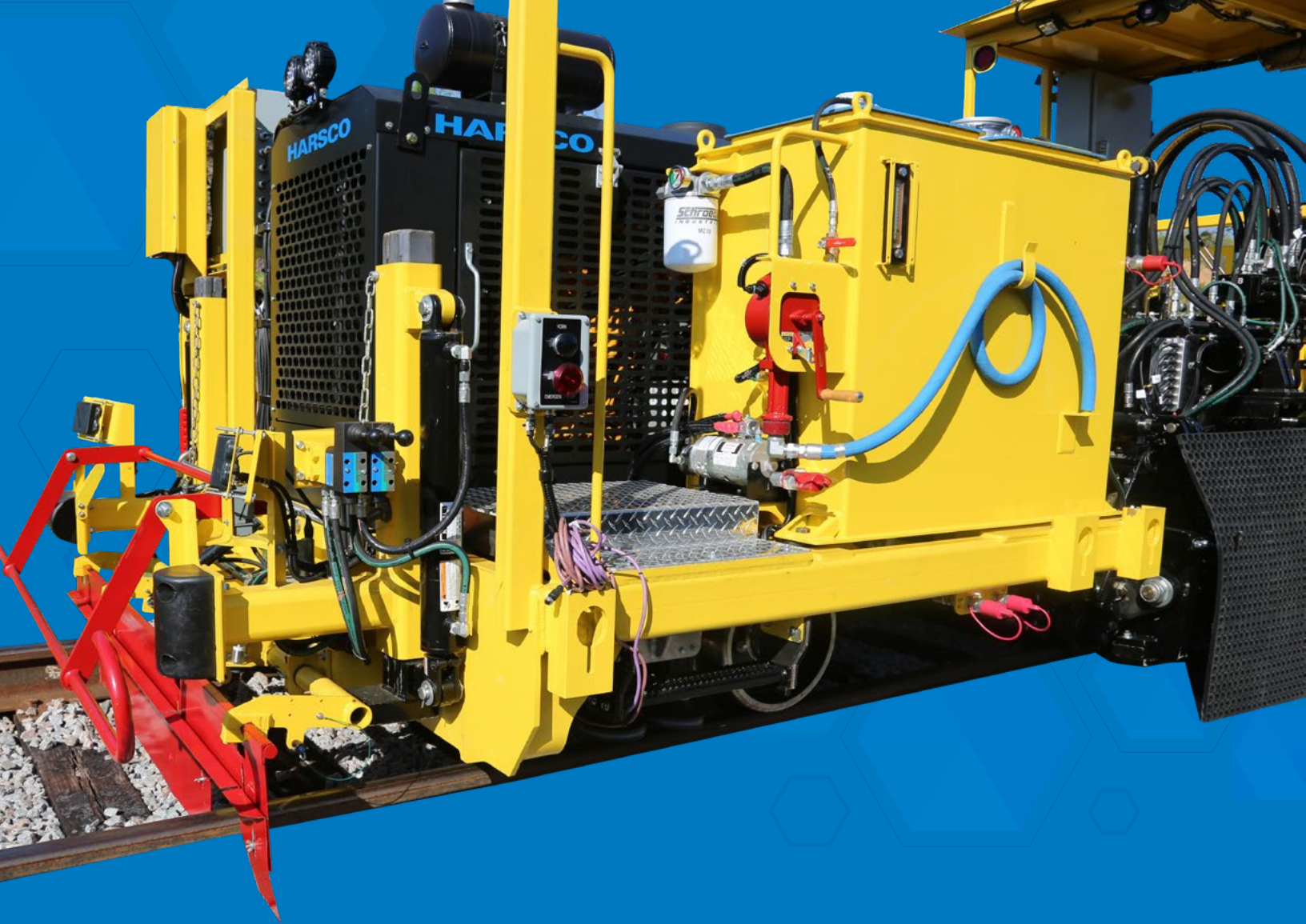


# DRONE ANCHOR SPREADER

MODEL DSP



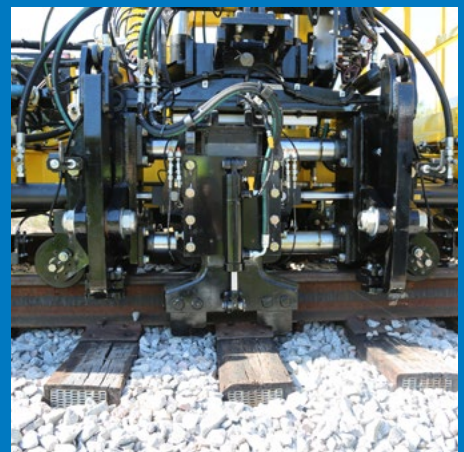


# DRONE ANCHOR SPREADER

## MODEL DSP

Harsco Rail's new Drone Anchor Spreader (DSP) integrates the latest technology into a highly productive machine. The DSP is part of our line of Drone track maintenance machines.

The DSP Drone Anchor Spreader is one of the family of new machines designed to bring automation, high production, commonality and overall cost savings to your track maintenance projects.



# SPECIAL FEATURES

The Drone Anchor Spreader is designed to work autonomously with very little human input required once the machine is set up to go to work each day.

Anchor recognition, paint recognition, collision avoidance and tie mapping systems all use breakthrough technology to help automate the machines, as well as reduce the number of machines and operators needed in most operations.

Equipped with robust and redundant safety features, Harsco Rail drone machines are field-proven to achieve high production while protecting people and equipment.

## FEATURES

### Tie mapping

With data gathered from the MSP Spike Pullers working in front of the Drone Anchor Spreader, transmitted through an Ethernet connection, a “map” of the ties to be replaced is created.

### Easily adjustable to accommodate various rail sizes

Effective in working on rail sizes from 85 lb. to 155 lb.

### Travel Assist

Equipped with Travel Assist feature which allows the DSPA1 to be coupled with a MSPA1 Multi-Function Spike Puller for travel to and from the worksite. Traction of both machines is synched together.

### Jupiter Control System

Harsco Rail’s rugged and scalable distributed I/O control system provides comprehensive diagnostics, data recording and a simplified electrical system.

### Common parts

Designed with components used on other Harsco track maintenance machines. Reduces the number of different parts required on hand.

### Drone operation

Using the Tie Mapping System or the Tie Finder, Anchor Recognition and Paint Recognition systems the machine is able to identify the next tie to be worked and automatically index to that location and cycle. No operator interface required during normal production operations.



### Redundant Safety Systems

Equipped with radar, emergency stop bars and obstacle detection systems to safely alert the machine if something is fouling the track ahead.

### Hydraulic Brakes

Spring applied – hydraulic released brakes eliminate the need for a pneumatic system.

### Tier IV Compliant diesel engine

Other engine options are available.

### Drive

Two-axle chain drive. Equipped with 3 1/2” axles for rugged dependability.

### Easy access maintenance points

Open design and remote lubrication reduces maintenance time.

## OPTIONAL FEATURES

### Powered Jack Stands

Powered jack stands at the four corners of the machine provide a safe method to lift the machine if maintenance is required.

### Compass

Harsco Rail’s telematics system monitors the machine’s production, location and key data such as engine and hydraulic oil temperature and maintenance reports.

### Hydraulic Filtration

Kidney loop, return filters, etc.

### Remote Drain

Fuel, Hydraulic, Diesel and engine oil remote drains

### Collision Avoidance System

As part of a complete track safety program, Harsco’s Collision Avoidance System will alert operators if the machine gets too close to the machines working around it.

### Fire Extinguisher/Cone Holder

Available per customer specs

### Tool and Storage Box

Open tray or closed tool box mounted at the rear of machine. Also available is the spare parts storage box.

### Tie Downs

Keyhole tie downs welded to machine in accordance to AREMA or customer specifications.



# DRONE ANCHOR SPREADER

MODEL DSP



## SPECIFICATIONS

Length	297.5 in.
Width	102 in.
Height	127 in. (120 in. for shipping)
Wheelbase	173.75 in.
Weight	22,000 lbs. (approximately)
Max Travel Speed	Up to 25 mph
Fuel Capacity	100 gal. (sufficient for up to 16 hours)
Wheels	16 in. diameter
Brakes	Spring applied, hydraulically released, tread style Cobra shoes, on both axles
Electrical System	24 VDC
Pneumatic System	None used
Workheads	Robust workhead design spread anchors by sliding the tie plates forward and back.

Learn more at [harscorail.com](http://harscorail.com)



Updated in USA, August 2019

**Harsco Rail, Harsco Corporation**  
Facility Locations:

**Harsco Rail Global Headquarters**  
3440 Toringdon Way  
Suite 100, Building 3  
Charlotte, NC 28277, USA  
+1 980 960-2624  
[railinfo@harsco.com](mailto:railinfo@harsco.com)

**Harsco Rail Manufacturing Operations**  
2401 Edmund Road, Box 20  
West Columbia, SC 29171-0020, USA  
+1 803 822-9160  
[railinfo@harsco.com](mailto:railinfo@harsco.com)

**Harsco Rail Engineering Center**  
306 West 4th Street  
Fairmont, MN 56031-1837, USA  
+1 507 235-7376  
[railinfo@harsco.com](mailto:railinfo@harsco.com)

**Harsco Rail Manufacturing Operations**  
200 South Jackson Road  
Ludington, MI 49431, USA  
+1 231 843-3431  
[railinfo@harsco.com](mailto:railinfo@harsco.com)

**Protran Technology**  
1960 Old Cuthbert Road, Suite 100  
Cherry Hill, NJ 08034, USA  
+1 856 779-7795  
[info@protrantechology.com](mailto:info@protrantechology.com)

**Harsco Rail Pty Ltd Australia**  
4 Strathwyn Street, P.O. Box 5287  
Brendale, Queensland 4500, Australia  
+61 7 3205 6500

**Harsco Rail Ltd United Kingdom**  
Unit 1, Chevton Street, Eastwood  
Nottingham NG16 3HB, United Kingdom  
+44 (0) 1773 539480  
[uksales@harsco.com](mailto:uksales@harsco.com)

**Harsco Rail Ltda Brazil**  
Av. Marechal Câmara, 160 / 1615, Centro  
Rio de Janeiro RJ 20020-080, Brazil  
+55 21 2510-5164 / -5151

**Harsco Rail Europe GmbH**  
Luetticher Str. 130  
40547 Duesseldorf, Germany  
+49 (0) 211 60116 0  
[info.emea@harsco.com](mailto:info.emea@harsco.com)

**Harsco Rail China**  
Room C1201 Tower 2,  
No.36 BeiSanHuan Dong Lu,  
DongCheng District,  
Beijing 100013, P.R. China  
+87 10-6590-6399

**Harsco Track Machines and Services**  
Private Limited India  
2nd Floor, Building Alpha,  
Bengal Intelligent Park Block EP & GP,  
Sector V, Salt Lake, Kolkata  
700091 West Bengal, India  
+91 33 2357 5651

The HARSCO RAIL equipment pictured in this brochure is intended to illustrate the general appearance and features of this product. It is equipped as specified by a particular customer and may or may not show items that are optional or recommended by HARSCO RAIL, Harsco Corporation. Specifications, illustrations, and descriptive materials herein were accurate as known at the time this publication was approved for printing. HARSCO RAIL, Harsco Corporation reserves the right to discontinue models or options at any time or change specifications and materials, equipment and design without notice and without incurring obligation. Federal, State or Provincial, and/or local laws and regulations may require additional equipment for the particular use intended for this product. It is the buyer's responsibility to determine the applicability of such laws and regulations to the buyer's intended use for the product and to arrange for the installation of the required equipment. Other products and companies referred to herein are trademarks or registered trademarks of their respective companies and/or mark holders.