

# HTT

## Harsco Track Technologies

---

Harsco

www.harscotrack.com

---

### **SERVICE BULLETIN**

#### **MAINTENANCE OF WAY EQUIPMENT**

---

**DATE:** 5 - 2001

**BULLETIN NO:** 01-001

**TITLE:** MANUAL SQUEEZE WOBBLE STICK CONVERSION GROUP - PART NO. 2004242

**RATING:**

<input type="checkbox"/>	<b>ALERT</b> (Potential Problem)	<input type="checkbox"/>	<b>INFORMATION</b> (Action Is Optional)
<input type="checkbox"/>	<b>DIRECTIVE</b> (Action Is Required)	<input checked="" type="checkbox"/>	<b>PRODUCT IMPROVEMENT</b> (Enhance Product)

**PRODUCT SERIES / MODEL:** 6700S TAMPER

**SERIAL NO:** Models 152700 and Up

**SUMMARY:** Replace the existing manual squeeze toggle switch with a new manual squeeze wobble stick. One Conversion Group (part no. 2004242) is required per machine.

**OPERATIONAL IMPACT:** To improve reliability and offer a more operator friendly control.

**ACTION:** The installation of this Conversion Group requires:

1. Disconnecting the existing wiring from the manual squeeze toggle switch.
2. Removing the existing manual squeeze toggle switch.
3. Re-working the existing Control Box panel by enlarging the mounting hole and adding a keyway.
4. Applying a new name plate and installing the new manual squeeze wobble stick.
5. Reconnecting the existing wiring to the new manual squeeze wobble stick.

**CONTACT:** If you have any questions or if we can be of any service, please contact Jim Merritt at the Ludington, MI facility (231) 843-3431.

## Safety Information



- **FOLLOW APPLICABLE RAILROAD LOCKOUT - TAGOUT PROCEDURE TO REMOVE MACHINE FROM ENERGY SOURCE. FAILURE TO COMPLY COULD RESULT IN SEVERE BODILY INJURY.**

## Conversion Group Installation

1. Locate the existing manual squeeze toggle switch in the Control Box. See Figure 1 or Figure 2 applicable per the type of Control Box on the machine.
2. Disconnect the existing wires from the existing manual squeeze toggle switch.  
*Note: Make sure the wires are numbered before disconnecting from the toggle switch. If not, mark the wires per the wiring chart as shown in Figure 3.*
3. Remove the existing manual squeeze toggle switch from the Control Box. Discard the switch, it will not be re-used.
4. Rework the existing mounting hole by enlarging the hole and adding a new keyway per the dimensions shown in Figure 1 or Figure 2. Be sure to orient the keyway applicable per the type of Control Box on the machine.
5. Thoroughly clean the surface of the Control Box panel where the new name plate (4) is to be installed over the re-worked mounting hole. Install the new name plate (4) to the surface of the panel.
6. Install the new manual squeeze wobble stick (1) in the re-worked mounting hole of the panel and secure using the hex nut (part of the wobble stick).
7. Sub-assemble the mounting latch (2) and four contact blocks (3) as shown in Figure 3. Install the sub-assembly to the bottom of the new wobble stick (1).
8. Connect the existing wires to the new contact blocks (3) per the wiring chart as shown in Figure 3.

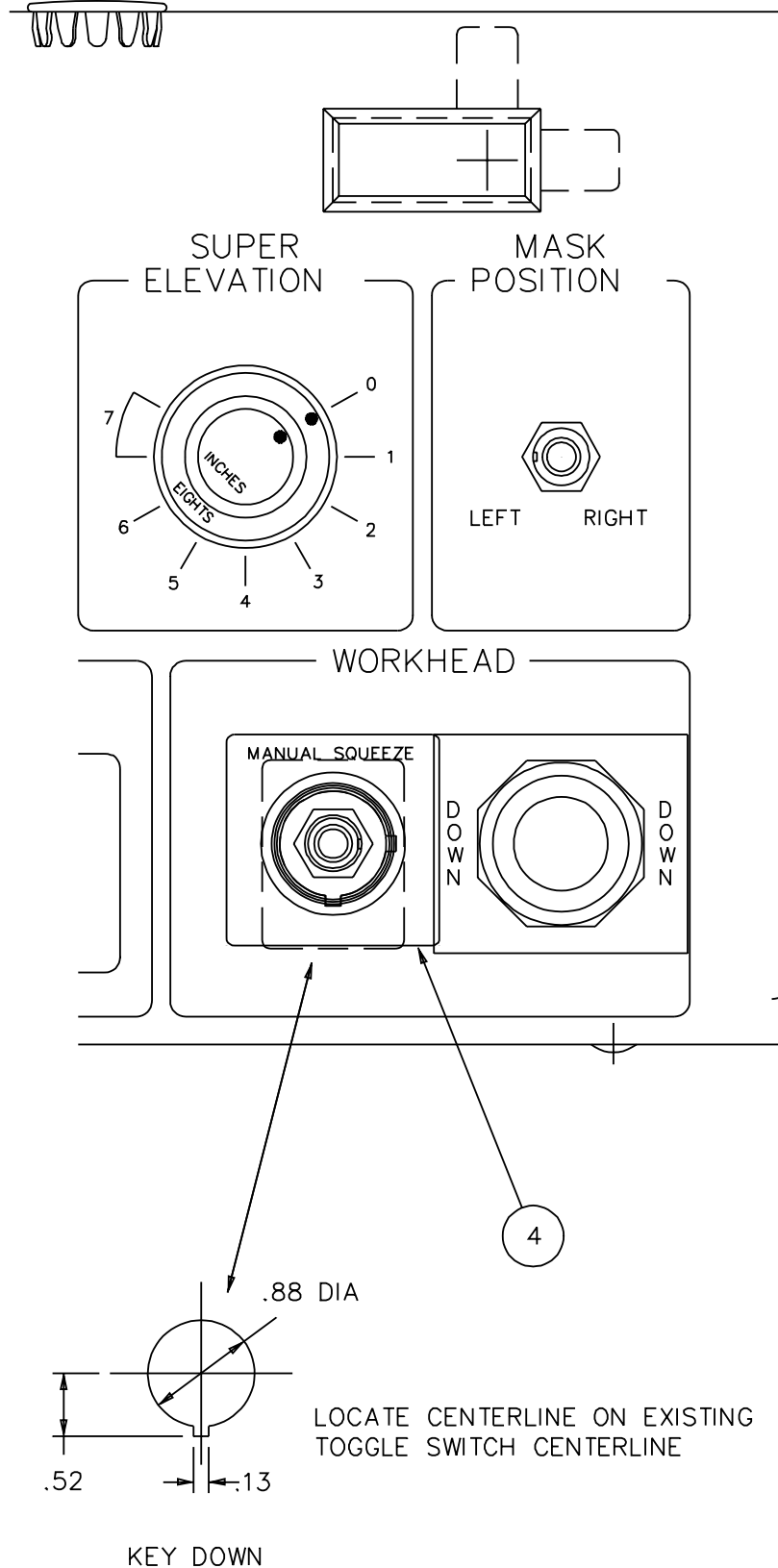
## Verify Machine Operation

9. After installing the Conversion Group, start the machine engine and verify operation of the new wobble stick.
10. When the new manual squeeze wobble stick is moved left / right or forward / reverse, the workhead tools should squeeze.
11. When the new manual squeeze wobble stick is released, the workhead tools should open.

# Conversion Group Installation

2004242-2

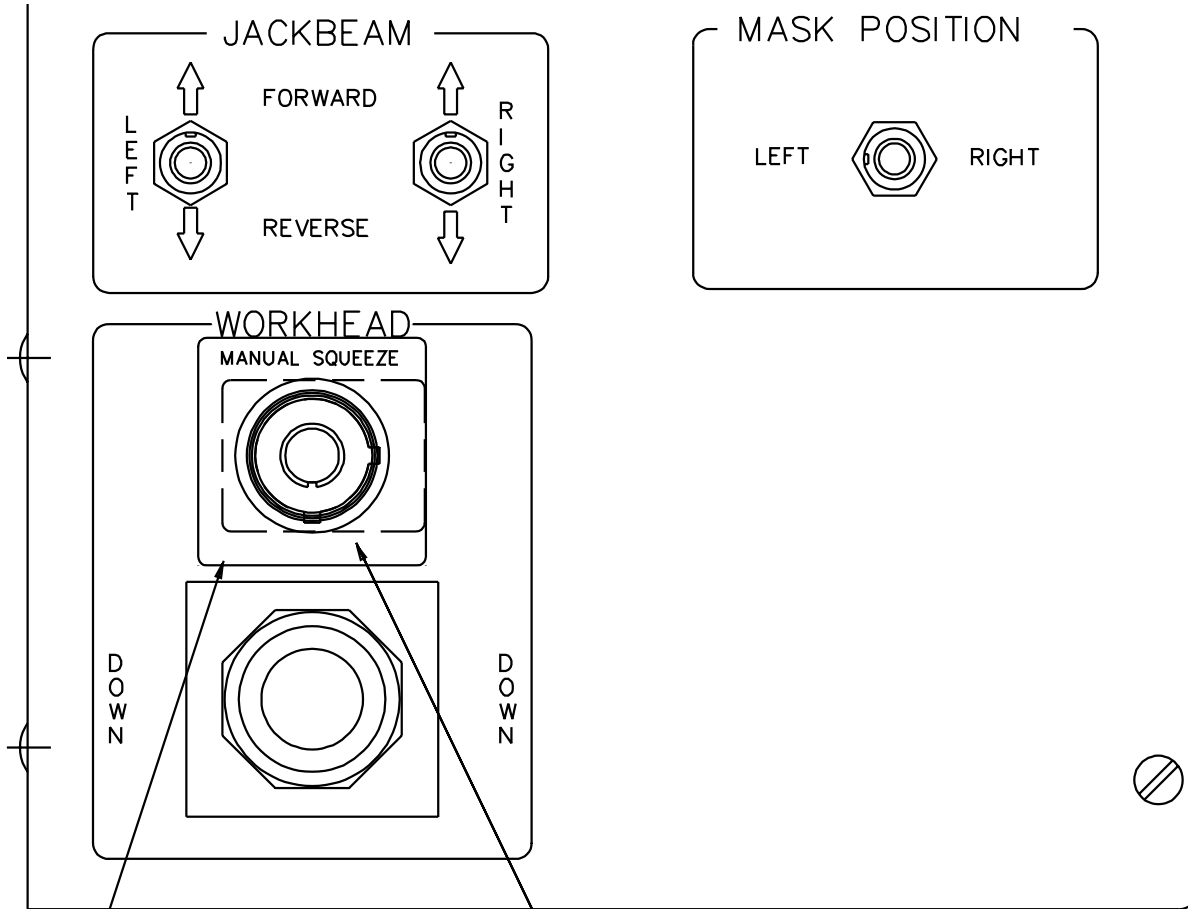
FIGURE 1  
431481-1 CONTROL BOX ASSEMBLY



# Conversion Group Installation

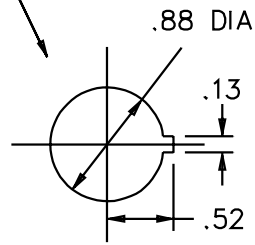
2004242-3

FIGURE 2  
431773-1 DUAL CONTROL BOX ASSEMBLY - RIGHT HAND



4

LOCATE CENTERLINE ON EXISTING TOGGLE SWITCH CENTERLINE

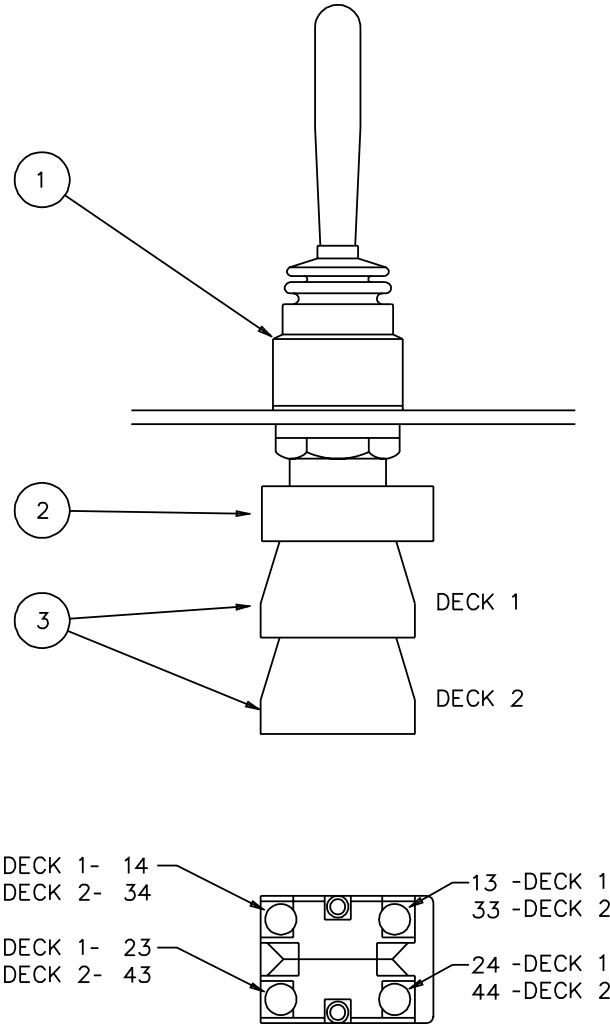


KEY RIGHT

# Conversion Group Installation

2004242-4

FIGURE 3  
WOBBLE JOYSTICK ASSEMBLY



WIRE No.	EXISTING TOGGLE SWITCH CONNECTION	WOBBLE STICK CONNECTION
1512A	TGS1520: 2	JS1520: 14
1513A	TGS1520: 1	JS1520: 13
1533A	TGS1520: 5	JS1520: 24
1534A	TGS1520: 4	JS1520: 23
1612A	TGS1520: 8	JS1520: 34
1610A	TGS1520: 7	JS1520: 33
1633A	TGS1520: 11	JS1520: 44
1634A	TGS1520: 10	JS1520: 43

## Conversion Group Parts List

*Note: See Figure 1, Figure 2 and Figure 3 for Item numbers.*

ITEM	PART NO	DESCRIPTION	QTY
	2004242	MANUAL SQUEEZE WOBBLE STICK CONVERSION. . . . . (Includes The Following Components)	1
1	2003654	Wobble Stick. . . . .	1
2	2003655	Mounting Latch. . . . .	1
3	2003656	Contact Block . . . . .	4
4	2004241	Name Plate - Manual Squeeze. . . . .	1
5	2004242-DWG	Drawing / Bill Material. . . . .	1

**© 2001 HARSCO TRACK TECHNOLOGIES, HARSCO CORPORATION**

415 North Main Street  
Fairmont, MN  
56031-1837  
Tel: (507) 235-3361  
Fax: (507) 235-7370

2401 Edmund Road, Box 20  
Cayce-West Columbia, SC  
29171-0020  
Tel: (803) 822-9160  
Fax: (803) 822-7471

200 South Jackson Road  
Ludington, MI  
49431  
Tel: (231) 843-3431  
Fax: (231) 843-4830

Printed In U.S.A