



Harsco Track Technologies

Harsco

www.harscotrack.com

SERVICE BULLETIN MAINTENANCE OF WAY EQUIPMENT

DATE: 8-1-2001 **BULLETIN NO:** 01-004

TITLE: 2004318 HANDRAIL CONVERSION GROUP - 6700S
2004327 HANDRAIL CONVERSION GROUP - 3300S

RATING:

<input type="checkbox"/>	ALERT (Potential Problem)	<input checked="" type="checkbox"/>	INFORMATION (Action Is Optional)
<input type="checkbox"/>	DIRECTIVE (Action Is Required)	<input type="checkbox"/>	PRODUCT IMPROVEMENT (Enhance Product)

PRODUCT SERIES / MODEL: 6700S and 3300S TAMPERS

SERIAL NO: All Models - On 6700S with SN 152709 and higher, a rubber shock-mounted handrail option was available and may already be installed on the machine.

SUMMARY: Replaces the welded vertical handrails at the front deck with rubber shock-mounted handrails on both 6700S and 3300S. Also replaces the welded ladders at the front deck with rubber shock-mounted ladders on 3300S.

OPERATIONAL IMPACT: To reduce breaking potential for welded handrails on (6700S and 3300S) and ladders (3300S). Black pipe handrails and ladders have had welds break due to the lower quality steel of the pipe. Variations of how the handrail is welded to the frame have been used on machines. Machines that have not experienced problems should have their welds checked periodically for cracks.

ACTION: The installation of these Conversion Groups requires:

- Removing the existing handrails and ladders.
- Hand-grinding the old welds of the handrails and ladders smooth.
- Tack-welding the new ladders to ensure alignment (3300S only).
- Drilling and tapping new mounting holes for the new handrails and ladders.
- Installing the new handrails and ladders.

CONTACT: If you have any questions or if we can be of any service, please contact Bill Perry at the Ludington, MI. facility, (231) 843-7416.

SAFETY INFORMATION

- **FOLLOW APPLICABLE RAILROAD LOCKOUT - TAGOUT PROCEDURE TO REMOVE MACHINE FROM ENERGY SOURCE. FAILURE TO COMPLY COULD RESULT IN SEVERE BODILY INJURY.**

6700S CONVERSION GROUP INSTALLATION - See Figure 1 and Figure 2

1. Remove the existing welded vertical handrails on the frame.
2. Hand-grind the old welds of the existing handrails smooth on the frame.
3. Sub-assemble the rubber mounts to the handrails.
4. Position the new handrails per the dimensions shown to locate the new mounting holes.
5. Drill F (.257") diameter mounting holes and tap 5/16"-18 per the dimensions shown for the rubber mounts.
6. Install the new handrail sub-assemblies as shown using the mounting screws, lock washers and nuts. Tighten all mounting screws securely.

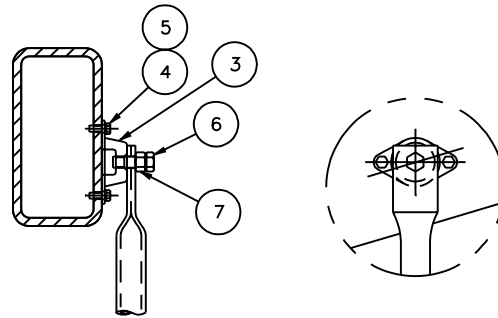
6700S CONVERSION GROUP PARTS LIST - See Figure 1 and Figure 2

ITEM	PART NO	DESCRIPTION	QTY
	2004318	HANDRAIL CONVERSION GROUP	1
1	2004319	Vertical Handrail, Front	2
2	2004320	Vertical Handrail, Rear	2
3	2543	Rubber Mount, Revision B	8
3	2543	Rubber Mount, Revision C	8
4	250010-53	Screw - Hex Head Cap, 5/16"-18 x 3/4" Long	16
5	150988-10	Washer - Lock, 5/16" Regular	16
6	250010-252	Screw - Hex Head Cap, 1/2"-20 x 1-1/2" Long	8
7	150965-26	Nut - Hex, 1/2"-20 Grade 5	8
	2004318-DWG	Drawing / Bill of Material	1

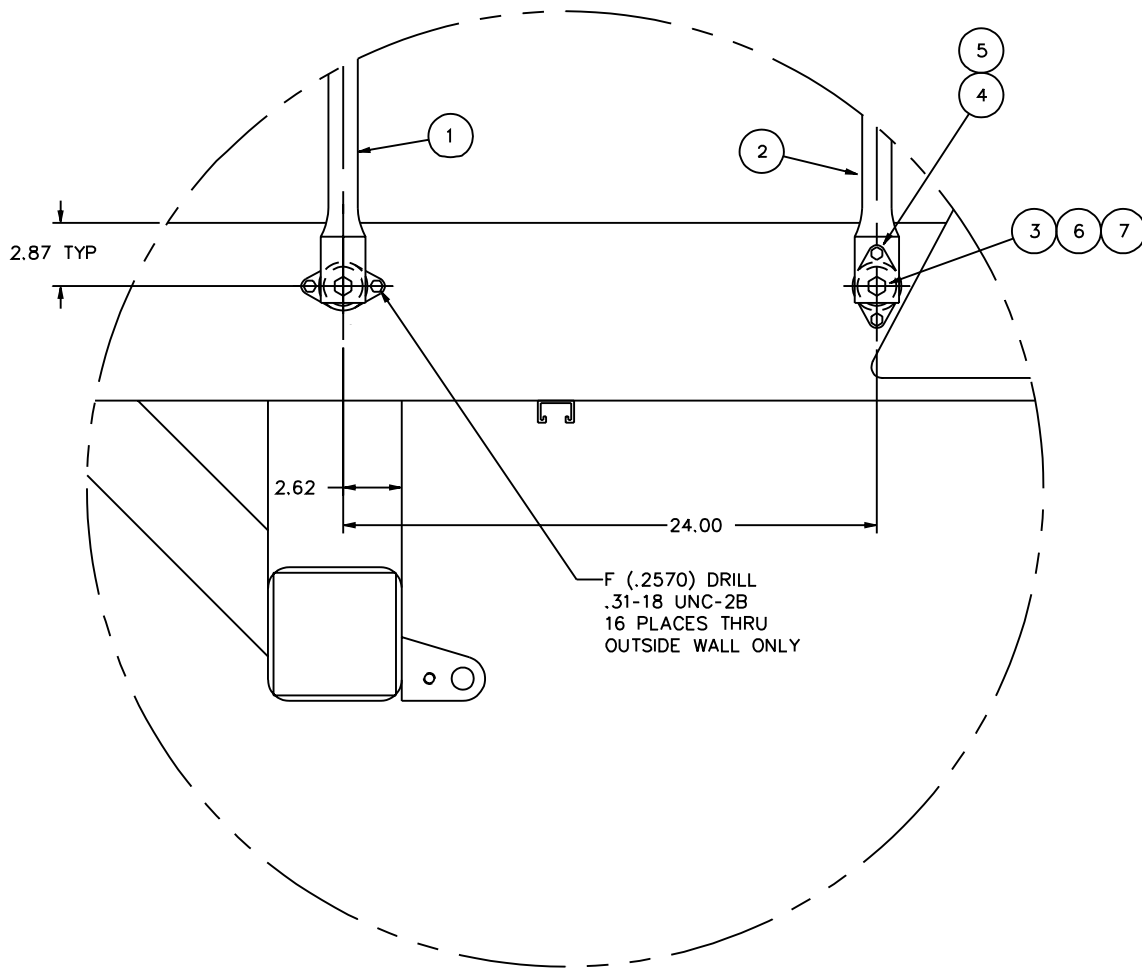
6700S CONVERSION GROUP INSTALLATION

1003843-1

FIGURE 1



VIEW B

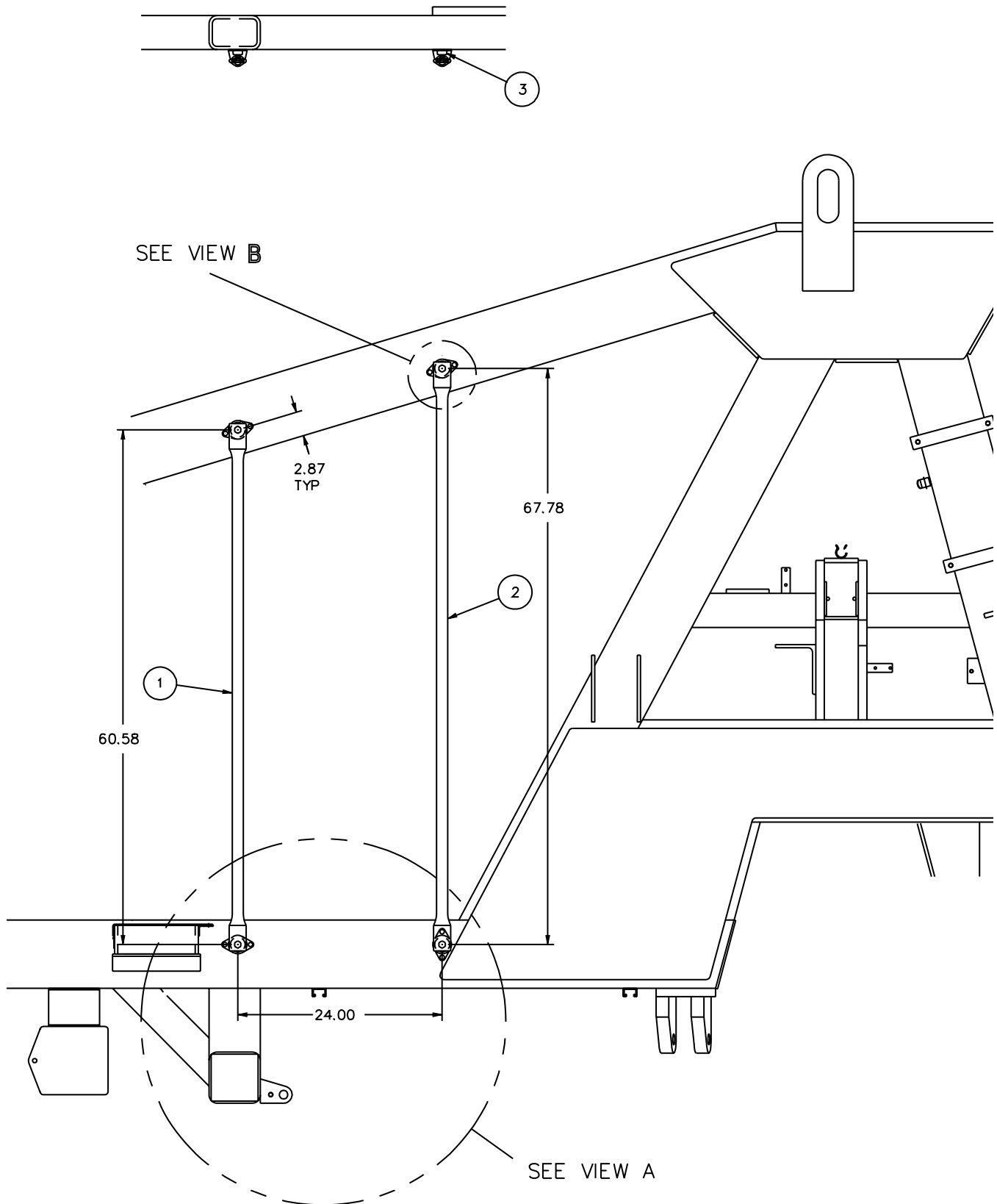


VIEW A

6700S CONVERSION GROUP INSTALLATION

1003843-2

FIGURE 2



SAFETY INFORMATION

- **FOLLOW APPLICABLE RAILROAD LOCKOUT - TAGOUT PROCEDURE TO REMOVE MACHINE FROM ENERGY SOURCE. FAILURE TO COMPLY COULD RESULT IN SEVERE BODILY INJURY.**

3300S CONVERSION GROUP INSTALLATION - See Figure 3 and Figure 4

1. Remove the existing welded vertical handrails and ladders on the frame and deck.
2. Hand-grind the old welds of the existing handrails and ladders smooth on the frame and deck.
3. Sub-assemble the rubber mounts to the handrails and ladders.
4. Position the new handrails and ladders per the dimensions shown to locate the new mounting holes.
5. **Important:** Before welding on the machine:
 - 5.1 Shut off the battery disconnect switch.
 - 5.2 Disconnect all electrical wires from the alternator.
 - 5.3 If the machine has the Auto Curve Computer, disconnect cable #15.
 - 5.4 If the machine has the Auto Workhead Computer, disconnect cable #14.
 - 5.5 Disconnect cables #12 and #13 going to the module panels.
6. Tack weld the new ladder in place to ensure proper alignment.
7. Drill F (.257") diameter mounting holes and tap 5/16"-18 per the dimensions shown for the rubber mounts.
8. Install the new handrail sub-assemblies as shown using the mounting screws, lock washers and nuts. Tighten all mounting screws securely.
9. Reconnect all wires and cables that were disconnected in Step 5.

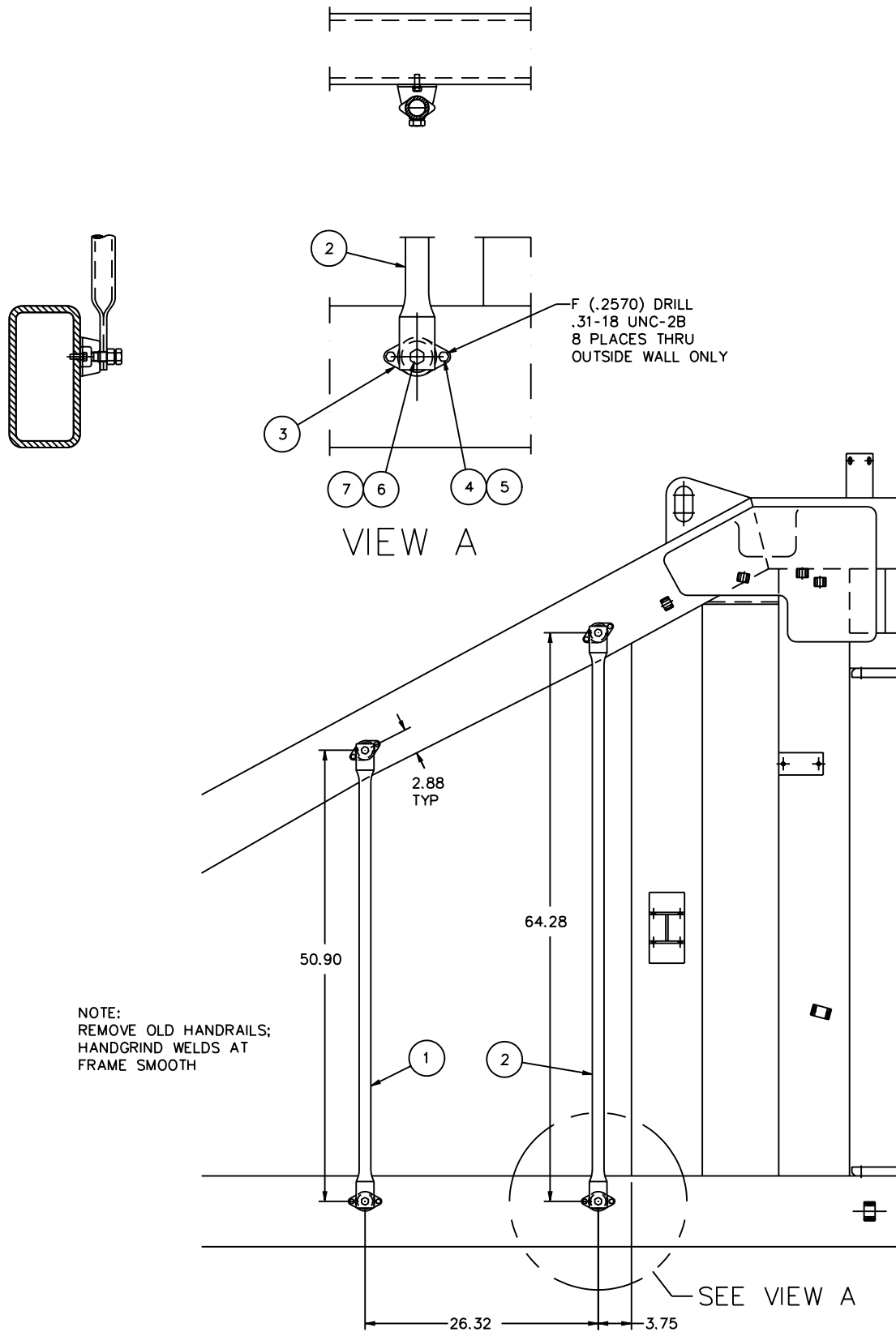
3300S CONVERSION GROUP PARTS LIST - See Figure 3 and Figure 4

ITEM	PART NO	DESCRIPTION	QTY
	2004327	HANDRAIL CONVERSION GROUP	1
1	2004328	Vertical Handrail, Front	1
2	2004329	Vertical Handrail, Rear	1
3	2543	Rubber Mount, Revision B	6
3	2543	Rubber Mount, Revision C	6
4	250010-53	Screw - Hex Head Cap, 5/16"-18 x 3/4" Long	12
5	150988-10	Washer - Lock, 5/16" Regular	12
6	250010-252	Screw - Hex Head Cap, 1/2"-20 x 1-1/2" Long	6
7	150965-26	Nut - Hex, 1/2"-20 Grade 5	6
8	2004330	Ladder - Welded	1
8	2004330	Ladder - Welded, Revision A	1
9	2004340	Socket - Ladder	2
	2004327-DWG	Drawing / Bill of Material	1

3300S CONVERSION GROUP INSTALLATION

1003850-1

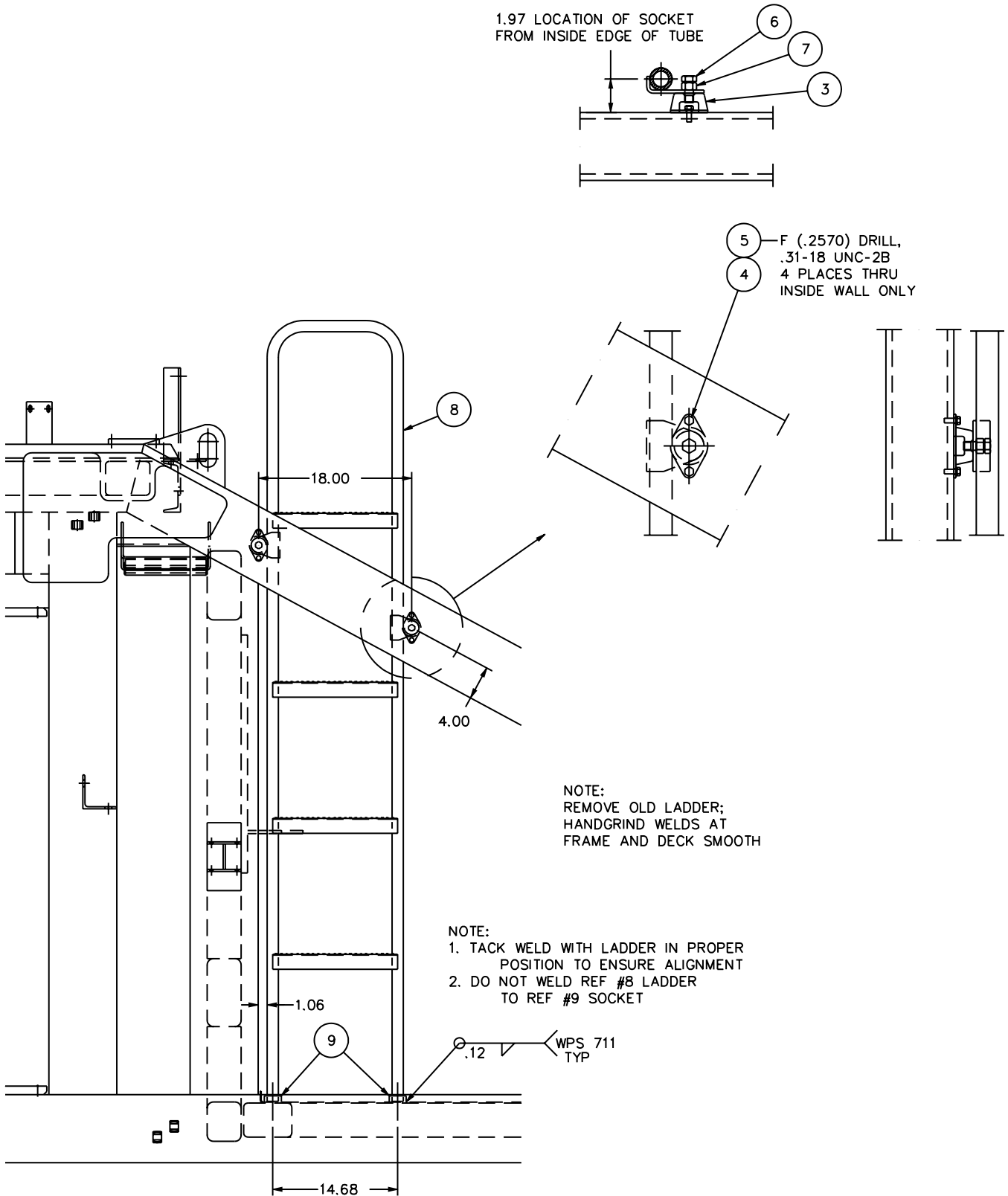
FIGURE 3



3300S CONVERSION GROUP INSTALLATION

1003850-2

FIGURE 4



© 2001 HARSCO TRACK TECHNOLOGIES, HARSCO CORPORATION

415 North Main Street
Fairmont, MN
56031-1837
Tel: (507) 235-3361
Fax: (507) 235-7370

2401 Edmund Road, Box 20
Cayce-West Columbia, SC
29171-0020
Tel: (803) 822-9160
Fax: (803) 822-7471

200 South Jackson Road
Ludington, MI
49431
Tel: (231) 843-3431
Fax: (231) 843-4830