



# Harsco Track Technologies

Harsco

www.harscotrack.com

---

## SERVICE BULLETIN MAINTENANCE OF WAY EQUIPMENT

---

**DATE:** 8-1-2001 **BULLETIN NO:** 01-006

**TITLE:** 2004363 RETURN LINE SWIVEL FITTING SERVICE GROUP

**RATING:**

<input type="checkbox"/>	<b>ALERT</b> (Potential Problem)	<input checked="" type="checkbox"/>	<b>INFORMATION</b> (Action Is Optional)
<input type="checkbox"/>	<b>DIRECTIVE</b> (Action Is Required)	<input type="checkbox"/>	<b>PRODUCT IMPROVEMENT</b> (Enhance Product)

**PRODUCT SERIES / MODEL:** 6700S TAMPERS

**SERIAL NO:** Models 151871 and Higher

**SUMMARY:** The two screws that hold the return line manifold to the frame of the machine have broken on occasion due to hydraulic impulses in the return line. This Service Group adds a swivel in the return line to reduce the strain on the manifold mounting screws and the return line filter.

**OPERATIONAL IMPACT:** To eliminate the possible breakage of the mounting screws and to reduce the strain on the return line filter.

**ACTION:** The installation of this Service Group requires:

- Removing the existing non-swivel fitting from the return line manifold.
- Installing the new swivel fitting in the return line manifold.

**CONTACT:** If you have any questions or if we can be of any service, please contact Bill Perry at the Ludington, MI. facility, (231) 843-7416.

**SAFTEY INFORMATION**



- FOLLOW APPLICABLE RAILROAD LOCKOUT - TAGOUT PROCEDURE TO REMOVE MACHINE FROM ENERGY SOURCE. FAILURE TO COMPLY COULD RESULT IN SEVERE BODILY INJURY.

**SERVICE GROUP INSTALLATION - See Figure 1**

1. Locate the return line manifold mounted on the top right side of the truss on the machine.
2. Disconnect the hydraulic line from the existing non-swivel fitting P/N 150167-15 in the return manifold. Remove the existing non-swivel fitting P/N 150167-15 from the manifold.
3. Install the new swivel fitting (1) in the return manifold. Tighten the hydraulic fitting securely.
4. Reconnect the hydraulic line to the new swivel fitting (1). Tighten the hydraulic connection securely.
5. Start the engine and pressurize the hydraulic system.
6. Check the new hydraulic swivel fitting and connection for hydraulic leaks.

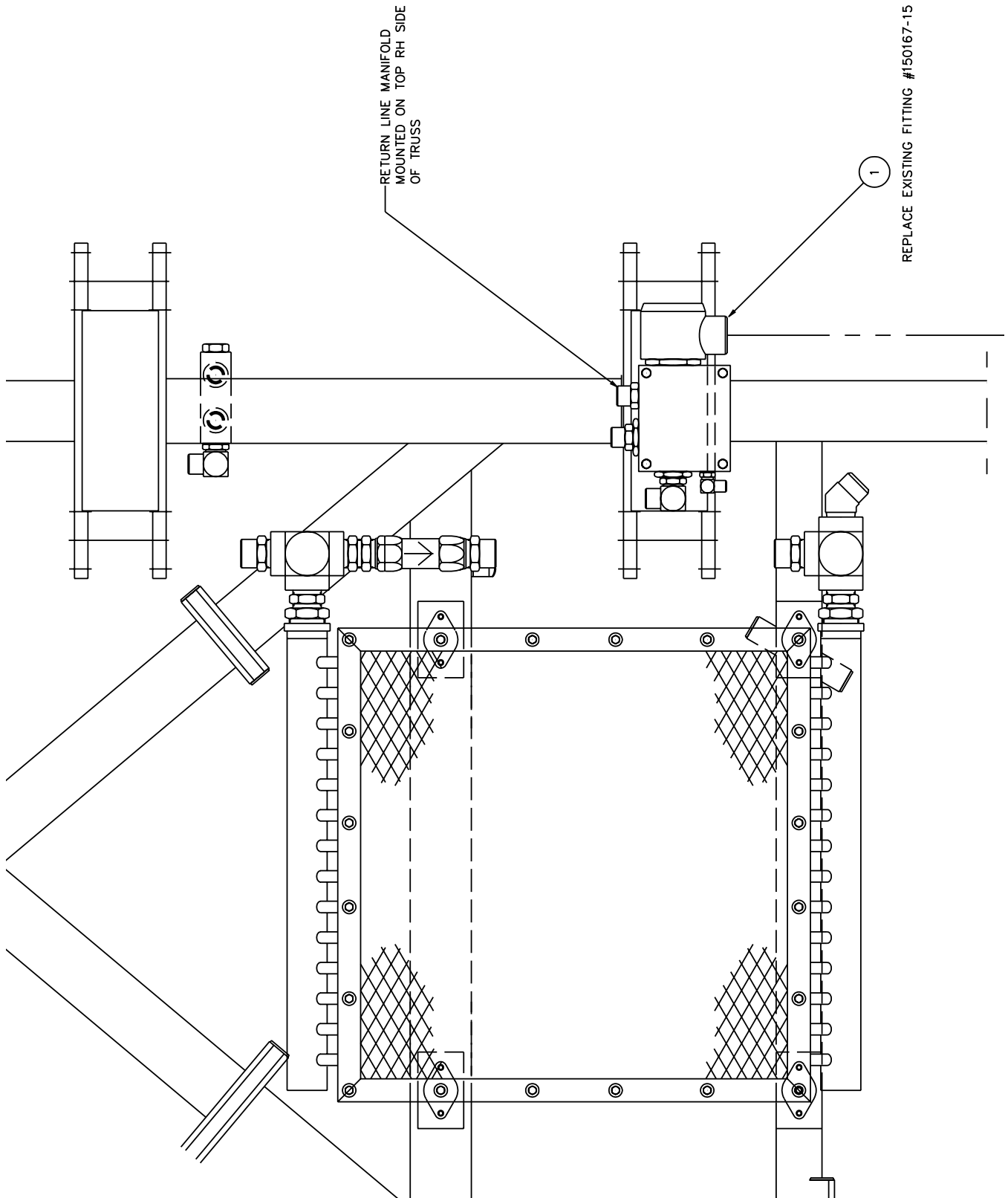
**SERVICE GROUP PARTS LIST - See Figure 1**

ITEM	PART NO	DESCRIPTION	QTY
	2004363	RETURN LINE SWIVEL FITTING SERVICE GROUP . . . . .	1
1	2004364	Rotary Swivel Fitting . . . . .	1
	2004363-DWG	Drawing / Bill of Material . . . . .	1

SERVICE GROUP INSTALLATION

1003883-1

FIGURE 1



**© 2001 HARSCO TRACK TECHNOLOGIES, HARSCO CORPORATION**

415 North Main Street  
Fairmont, MN  
56031-1837  
Tel: (507) 235-3361  
Fax: (507) 235-7370

2401 Edmund Road, Box 20  
Cayce-West Columbia, SC  
29171-0020  
Tel: (803) 822-9160  
Fax: (803) 822-7471

200 South Jackson Road  
Ludington, MI  
49431  
Tel: (231) 843-3431  
Fax: (231) 843-4830