



# Harsco Track Technologies

Harsco

www.harscotrack.com

---

## SERVICE BULLETIN MAINTENANCE OF WAY EQUIPMENT

---

**DATE:** 8-1-2001 **BULLETIN NO:** 01-009

**TITLE:** 2004242 MANUAL SQUEEZE WOBBLE STICK CONVERSION GROUP

**RATING:**

<input type="checkbox"/>	<b>ALERT</b> (Potential Problem)	<input type="checkbox"/>	<b>INFORMATION</b> (Action Is Optional)
<input type="checkbox"/>	<b>DIRECTIVE</b> (Action Is Required)	<input checked="" type="checkbox"/>	<b>PRODUCT IMPROVEMENT</b> (Enhance Product)

**PRODUCT SERIES / MODEL:** 6700S TAMPER

**SERIAL NO:** Models 152699 and Lower

**SUMMARY:** Replace the existing manual squeeze toggle switch with a new manual squeeze wobble stick.

*Note: If the Workhead Push Button has not been replaced with the Workhead Joy Stick Conversion P/N 441417-1, there will not be enough room in the Operators Console Box to install the Manual Squeeze Wobble Stick Conversion P/N 2004242. Workhead Joy Stick Conversion P/N 441417-1 must be installed before the Manual Squeeze Wobble Stick Conversion P/N 2004242.*

**OPERATIONAL IMPACT:** To improve reliability and offer a more operator friendly control.

**ACTION:** The installation of this Conversion Group requires:

- Disconnecting the existing wiring from the manual squeeze toggle switch.
- Removing the existing manual squeeze toggle switch.
- Re-working the existing Control Box panel by enlarging the mounting hole and adding a key-way.
- Applying a new name plate and installing the new manual squeeze wobble stick.
- Reconnecting the existing wiring to the new manual squeeze wobble stick.

**CONTACT:** If you have any questions or if we can be of any service, please contact Jim Merritt at the Ludington, MI. facility (231) 843-3431.

**SAFETY INFORMATION**

- **FOLLOW APPLICABLE RAILROAD LOCKOUT - TAGOUT PROCEDURE TO REMOVE MACHINE FROM ENERGY SOURCE. FAILURE TO COMPLY COULD RESULT IN SEVERE BODILY INJURY.**

**CONVERSION GROUP INSTALLATION - See Figure 1, Figure 2 and Figure 3**

1. Locate the existing manual squeeze toggle switch in the Control Box. See Figure 1 or Figure 2 applicable per the type of Control Box on the machine.
2. Disconnect the existing wires from the existing manual squeeze toggle switch.  
*Note: Make sure the wires are numbered before disconnecting from the toggle switch. If not, mark the wires per the wiring chart as shown in Figure 3.*
3. Remove the existing manual squeeze toggle switch from the Control Box. Discard the switch, it will not be re-used.
4. Rework the existing mounting hole by enlarging the hole and adding a new key-way per the dimensions shown in Figure 1 or Figure 2. Be sure to orient the key-way applicable per the type of Control Box on the machine.
5. Thoroughly clean the surface of the Control Box panel where the new name plate (4) is to be installed over the re-worked mounting hole. Install the new name plate (4) to the surface of the panel.
6. Install the new manual squeeze wobble stick (1) in the re-worked mounting hole of the panel and secure using the hex nut (part of the wobble stick).
7. Sub-assemble the mounting latch (2) and four contact blocks (3) as shown in Figure 3. Install the sub-assembly to the bottom of the new wobble stick (1).
8. Connect the existing wires to the new contact blocks (3) per the wiring chart as shown in Figure 3.

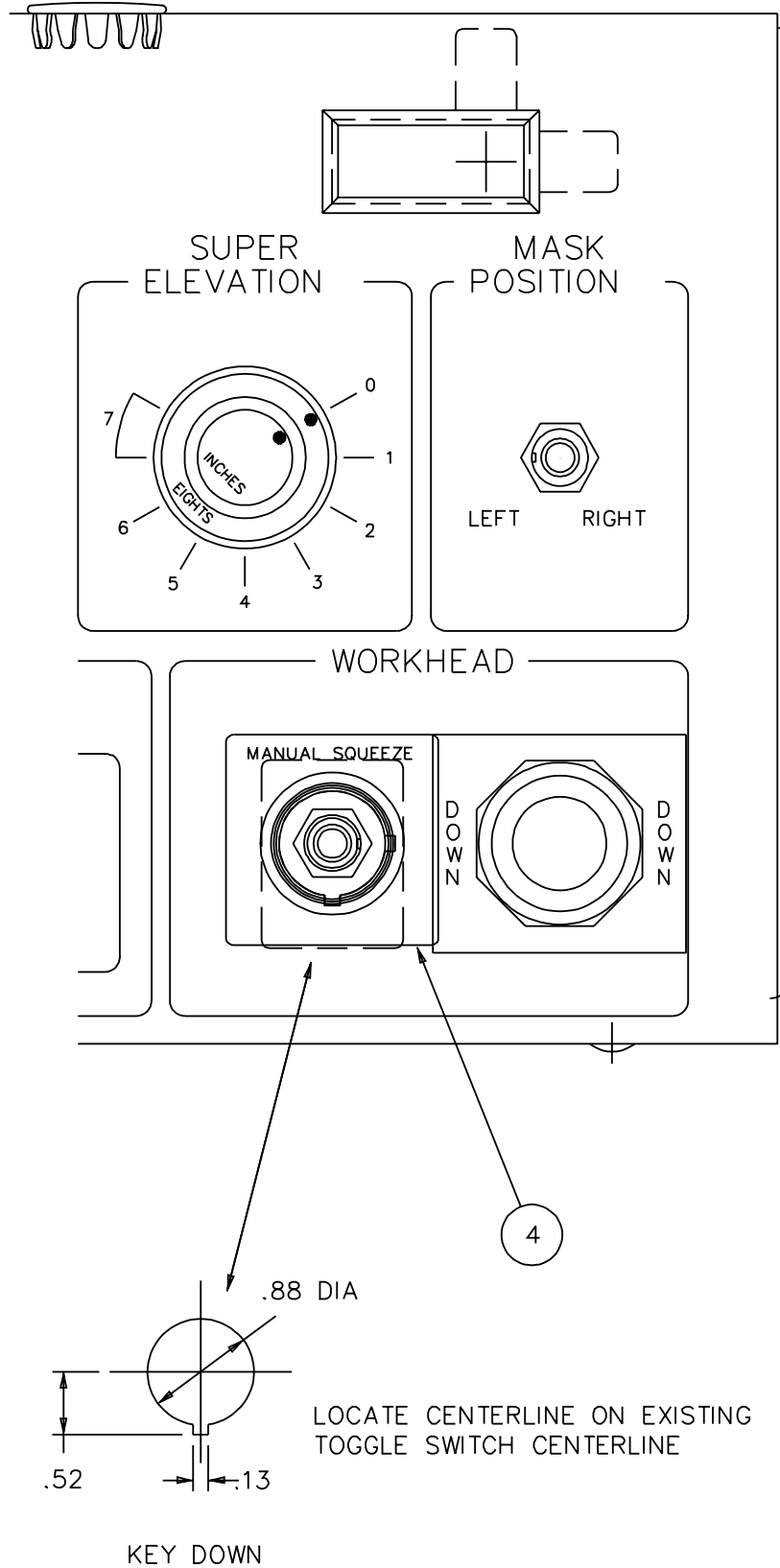
**VERIFY MACHINE OPERATION**

9. After installing the Conversion Group, start the machine engine and verify operation of the new wobble stick.
10. When the new manual squeeze wobble stick is moved left / right or forward / reverse, the workhead tools should squeeze.
11. When the new manual squeeze wobble stick is released, the workhead tools should open.

CONVERSION GROUP INSTALLATION

2004242-2

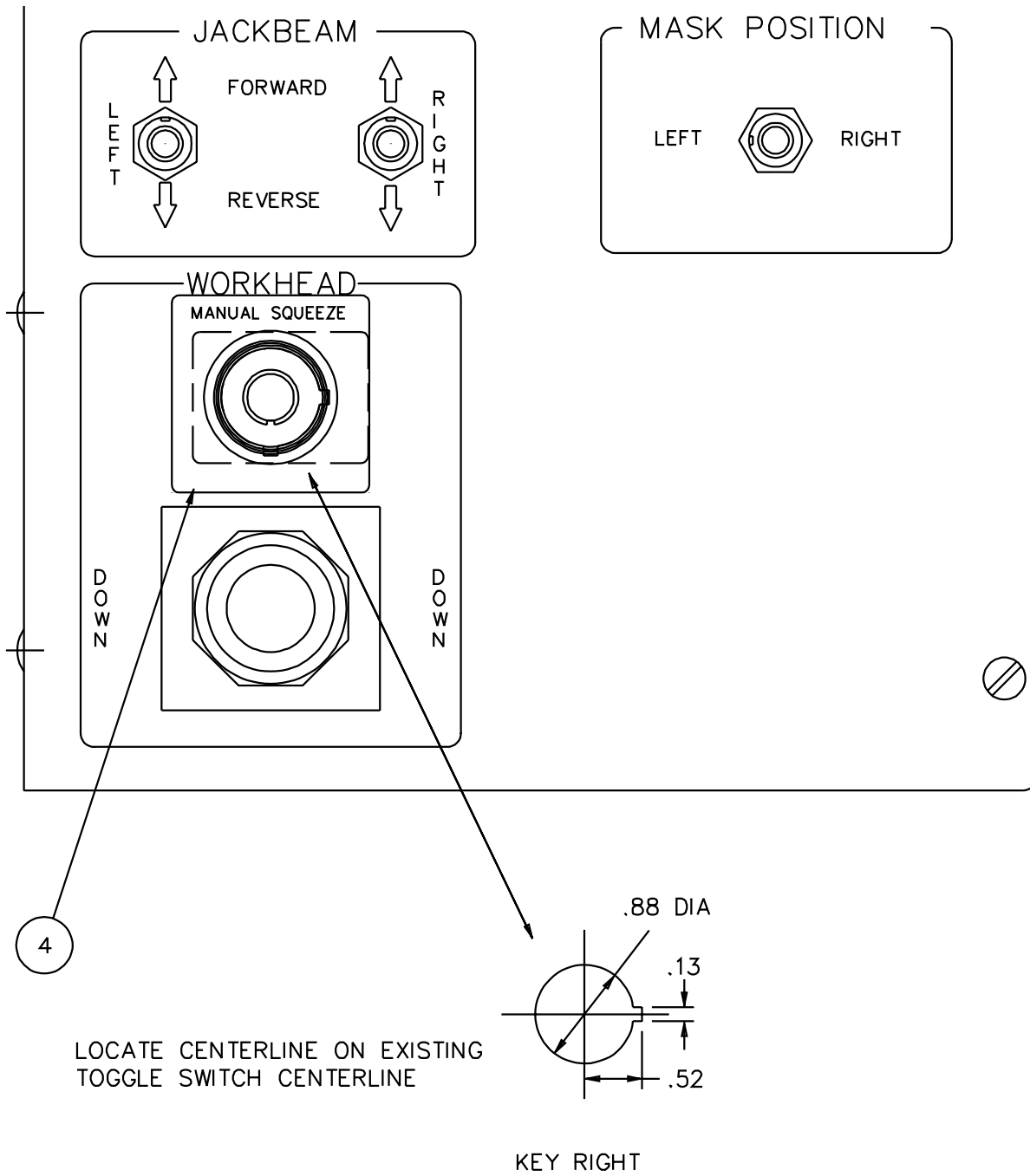
FIGURE 1  
431481-1 CONTROL BOX ASSEMBLY



CONVERSION GROUP INSTALLATION

2004242-3

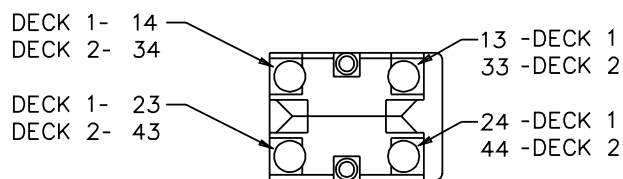
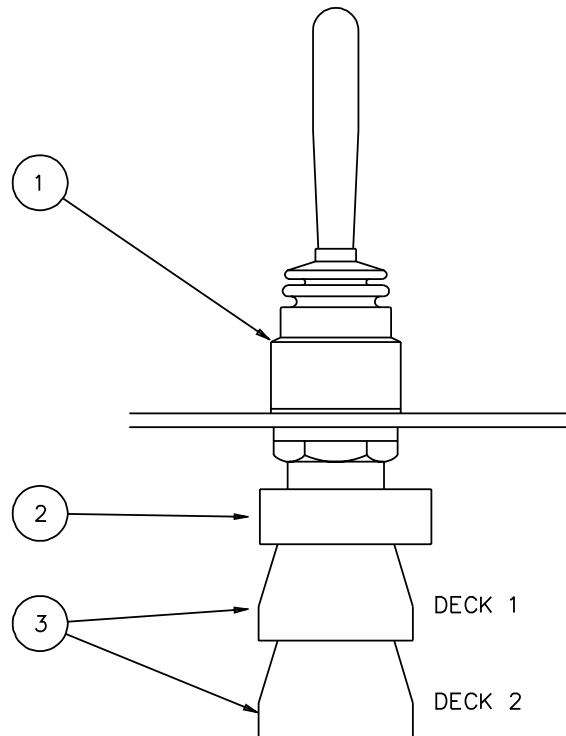
FIGURE 2  
431773-1 DUAL CONTROL BOX ASSEMBLY - RIGHT HAND



CONVERSION GROUP INSTALLATION

2004242-4

FIGURE 3  
WOBBLE JOYSTICK ASSEMBLY



CHART

WIRE No.	EXISTING TOGGLE SWITCH CONNECTION	NEW WOBBLE STICK CONNECTION
209	2	14
212	1	13
217	5	24
219	4	23
226	8	34
228	7	33
235	11	44
237	10	43

**CONVERSION GROUP PARTS LIST - See Figure 1, Figure 2 and Figure 3**

ITEM	PART NO	DESCRIPTION	QTY
	2004242	MANUAL SQUEEZE WOBBLE STICK CONVERSION. . . . .	1
1	2003654	Wobble Stick. . . . .	1
2	2003655	Mounting Latch. . . . .	1
3	2003656	Contact Block . . . . .	4
4	2004241	Name Plate - Manual Squeeze. . . . .	1
	2004242-DWG	Drawing / Bill of Material. . . . .	1

**© 2001 HARSCO TRACK TECHNOLOGIES, HARSCO CORPORATION**

415 North Main Street  
Fairmont, MN  
56031-1837  
Tel: (507) 235-3361  
Fax: (507) 235-7370

2401 Edmund Road, Box 20  
Cayce-West Columbia, SC  
29171-0020  
Tel: (803) 822-9160  
Fax: (803) 822-7471

200 South Jackson Road  
Ludington, MI  
49431  
Tel: (231) 843-3431  
Fax: (231) 843-4830