



Rail Products
A Harsco Rail Company

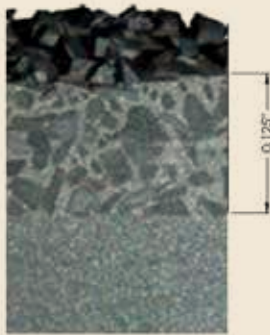
**OEM Quality
Engineered
for Your High
Performance
MOW Needs**

(800) 800-6410 • railparts@harsco.com
Order online @ parts.harscorail.com

“JK Rail Proprietary Carbide Products differentiate us from the competition...”



JK ToughGrit uses only the highest quality of tungsten carbide that is deposited evenly through the weld and penetrates parent material up to 0.12:



- Extremely hard tungsten carbide grit and proprietary make up wire for longer life (2 to 3X longer than competitor products)
- Mesh sorted tungsten carbide grit evenly distributed in the overlay for superior wear resistance
- Penetration up to .12 inches into parent material for consistent overlay adhesion to the part



JK SuperCarb uses only the highest grade of carbide in combination with a proprietary brazing process to create superior products that perform above expectations in the harshest rail applications.

- Formulated mix of tungsten carbide and cobalt is of quality “Die Grade” yielding outstanding impact and wear resistance
- Only virgin tungsten powder contains a crystalline angular grain structure for maximum strength
- Tiles are finished in state-of-the-art sinter Hot Isostatic Press furnaces to virtually eliminate residual porosity
- Proprietary brazing process generates optimum braze strength:
 - Tiles have micro-bumps and ridges to control braze alloy joint thickness for optimum braze shear strength
 - Tiles are nested in machined pockets for increased strength
 - Tri-metal braze alloy is specially devised and engineered for bonding tungsten carbide to steel
 - High temperature brazing process yields the strongest bond possible
 - Layered braze alloys to absorb the different expansion and contraction rates of tungsten carbide and steel



Rail Products

A Harsco Rail Company

JK-215L

Mark Carbide Tamping Tool (Left)

CP-012488502-L

CN-1055433

Replacement for:

Harsco Rail A9602XAH,
H5532WAB, D2752Y01



- 4140 alloy steel one-piece forging is highly abrasion resistant, giving longer life and increased strength
- Bull nose blunt leading edge decreases fracturing during all penetrations
- High hardness carbide extends life and ballast penetrations
- Increased carbide mass in critical wear locations
- Machined carbide pockets create a stronger braze joint and reduce carbide plate failure
- Standard equipment on all new Mark IV Tamper and Drones



JK-215R

Mark Carbide Tamping Tool (Right)

CP-012488510-R

CN-1055434

Replacement for:

Harsco Rail A9602XAG,
H5532WAA, D2752Y02



- 4140 alloy steel one-piece forging is highly abrasion resistant, giving longer life and increased strength
- Bull nose blunt leading edge decreases fracturing during all penetrations
- High hardness carbide extends life and ballast penetrations
- Increased carbide mass in critical wear locations
- Machined carbide pockets create a stronger braze joint and reduce carbide plate failure
- Standard equipment on all new Mark IV Tamper and Drones





Rail Products

A Harsco Rail Company



JK-215LN

Mark Carbide Tamping Tool (Left, Narrow)

- 4140 alloy steel one-piece forging is highly abrasion resistant, giving longer life and increased strength
- Bull nose blunt leading edge decreases fracturing during all penetrations
- High hardness carbide extends life and ballast penetrations
- Increased carbide mass in critical wear locations
- Machined carbide pockets create a stronger braze joint and reduce carbide plate failure
- Narrow paddle design to give increased clearance with joint bars and other track components
- Used on: Mark II, III, IV



JK-215RN

Mark Carbide Tamping Tool (Right, Narrow)

- 4140 alloy steel one-piece forging is highly abrasion resistant, giving longer life and increased strength
- Bull nose blunt leading edge decreases fracturing during all penetrations
- High hardness carbide extends life and ballast penetrations
- Increased carbide mass in critical wear locations
- Machined carbide pockets create a stronger braze joint and reduce carbide plate failure
- Narrow paddle design to give increased clearance with joint bars and other track components
- Used on: Mark II, III, IV



JK-H4388WAC

Mark Carbide Tamping Tool (Left)

Replacement for:
Harsco Rail H4388WAC, 5046431



- 4140 alloy steel one-piece forging is highly abrasion resistant, giving longer life and increased strength
- Bull nose blunt leading edge decreases fracturing during all penetrations
- High hardness carbide extends life and ballast penetrations
- Increased carbide mass in critical wear locations
- Machined carbide pockets create a stronger braze joint and reduce carbide plate failure
- Used on Mark VI workheads





Rail Products

A Harsco Rail Company

JK-H4388WAD

Mark Carbide Tamping Tool (Right)

Replacement for:

Harsco Rail H4388WAD, 5046428



- 4140 alloy steel one-piece forging is highly abrasion resistant, giving longer life and increased strength
- Bull nose blunt leading edge decreases fracturing during all penetrations
- High hardness carbide extends life and ballast penetrations
- Increased carbide mass in critical wear locations
- Machined carbide pockets create a stronger braze joint and reduce carbide plate failure
- Used on Mark VI workheads



JK-197940

Mark Rail Clamp

CP-012986976

Replacement for:

Harsco Rail A3033X02



- 4140 heat-treated alloy steel forging
- Hard-faced in high-wear areas to provide long service life
- 2 to 3 times the life of other rail clamps
- Supplied with mounting cap screws



JK-197940-1

Mark Rail Clamp

Single Hook

Replacement for:

Harsco Rail A3033X02



- Designed to reduce trapping of ballast in flooded ballast conditions
- 2 to 3 times the life of other rail clamps
- 4140 alloy steel forged body
- High hardness hard facing in high wear areas
- Designed to work on smaller rail
- Supplied with mounting cap screws



JK-197940-2

Mark Rail Hook Single

Replacement for:

Harsco Rail A3033X02



- 4140 alloy steel forged body
- High hardness hard facing in high-wear areas
- New hook shape designed to reduce trapping of ballast in flooded ballast conditions
- Designed to work on smaller rail
- Supplied with mounting cap screws





Rail Products

A Harsco Rail Company

JK-B6090Y02

MK IV Single Hook Rail Clamp

Replacement for:
Harsco Rail B6090Y02



- 4140 heat-treated alloy steel forging
- Hard-faced in high-wear areas to provide long service life
- 2 to 3 times the life of other rail clamps
- Supplied with mounting cap screws



JK-A3033X01

MK III Single Hook Rail Clamp

Replacement for:
Harsco Rail A3033X01



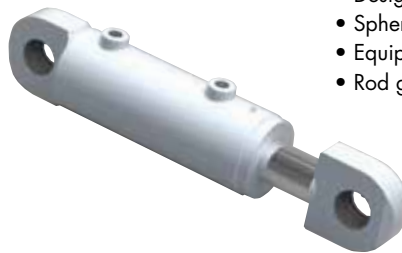
- 4140 heat-treated alloy steel forging
- Hard-faced in high-wear areas to provide long service life
- 2 to 3 times the life of other rail clamps



JK-X68297U

Mark Squeeze Cylinder

Replacement for:
Harsco Rail X68297, X68297U



- Heavy duty double acting hydraulic cylinder
- Designed with high temperature long life seals
- Spherical bearings retained with snap rings
- Equipped with SAE O-ring ports
- Rod gland secured with set screw and Loctite®

JK-193801

Mark Carbide Reaction Pad

Replacement for:
Harsco Rail 0-1305738-1-01



- T1 steel body
- High hardness carbide in rail-contact area
- Machined carbide pockets create stronger braze joint and reduce carbide plate failure





Rail Products

A Harsco Rail Company

JK-198275

Mark Carbide Bias Pad Assembly

Replacement for:
Harsco Rail A7660YAA



- 4140 heat-treated alloy steel forged body
- Bronze bushings with grease fitting in pivot
- Grease fittings with grease grooves in the cylinder lugs to reduce wear and improve life (fittings recessed into bias pad for protection from damage)
- Replacement pad JK-301234 incorporated in the assembly



JK-301234

Mark Carbide Pad Replacement Kit

Replacement for:
Ballast Tools Inc. BTI-301234



- 4140 alloy steel body
- High hardness carbide in rail-contact area
- Machined carbide pockets create stronger braze joint and reduce carbide plate failure
- Supplied with Grade 8 Hex Head cap screws and lockwashers
- Fits on Harsco Rail, Ballast Tools Inc. and Industry Railway Suppliers bias pad assemblies



JK-W750980

Wheel 24"

Replacement for:
Harsco Rail W750980



- Conforms to AAR specifications for material and heat treatment
- Used on Mark I & II tamper

JK-X766874-01-002

Wheel 30"

Replacement for:
Harsco Rail X766874-01-002



- Conforms to AAR specifications for material and heat treatment
- Used on Mark IV (non Durst axles) and Mark III tampers



Rail Products

A Harsco Rail Company

JK-635

Carbide Tamping Tool (6700 & 3300)

CSX-09000002301

UP-5847665

CP-011774752

Replacement for:

Harsco Rail 412690-1



- Standard equipment on new 6700 Tampers
- 4140 alloy steel one-piece forging is high abrasion resistant, giving longer life and increased strength
- Bull nose blunt leading edge decreases fracturing during all penetrations
- High hardness carbide extends life and ballast penetrations



JK-196101

6700 Rail Hook

BNSF-1009003775

CP-012988436

Replacement for:

Harsco Rail 2000784



- Standard equipment on new 6700 Tampers
- 4140 heat treated alloy steel forging
- Supplied with NEMA grade insulating bushings installed
- Hard-faced in high wear areas to provide long service life

JK-215C

Carbide Tamping Tool (6700 PD WH)

Replacement for:

Harsco Rail 5017458



- 4140 alloy steel one-piece forging is high abrasion resistant, giving longer life and increased strength
- Bull nose blunt leading edge decreases fracturing during all penetrations
- High hardness carbide extends life and ballast penetrations
- Increased carbide mass in critical wear locations
- Machined carbide pockets create a stronger braze joint and reduce carbide plate failure





Rail Products

A Harsco Rail Company

JK-636L

Carbide Tamping Tool (Left) (2400)

Replacement for:
Harsco Rail 215775-1



- 4140 alloy steel one-piece forging is high abrasion resistant, giving longer life and increased strength
- Bull nose blunt leading edge decreases fracturing during all penetrations
- High hardness carbide extends life and ballast penetrations
- Increased carbide mass in critical wear locations
- Machined carbide pockets create a stronger braze joint and reduce carbide plate failure



JK-636R

Carbide Tamping Tool (Right) (2400)

Replacement for:
Harsco Rail 215775-2



- 4140 alloy steel one-piece forging is high abrasion resistant, giving longer life and increased strength
- Bull nose blunt leading edge decreases fracturing during all penetrations
- High hardness carbide extends life and ballast penetrations
- Increased carbide mass in critical wear locations
- Machined carbide pockets create a stronger braze joint and reduce carbide plate failure





Rail Products

A Harsco Rail Company

JK-0969

Spike Anvil

Replacement for:
Nordco 10560043



- 4340 heat-treated alloy steel forging for toughness and wear
- Fully machined
- For use with Nordco spike-driving machines

JK-171041

Nipper Hook

CSX-09684001271

CP-044342105

Replacement for:
Nordco 44044340



- 4140 heat-treated alloy steel forging
- Carbide point with carbide grit overlay gives superior wear resistance
- Supplied with hardware kit
- For use with Nordco spike-driving machines



JK-54007502

Pin, Nipper Hook, Link

Replacement for:
Nordco 54007502



- ETD 150 alloy steel
- Supplied with grease fitting installed
- Used on Nordco spiker tie nipper assembly

JK-98410089

Kit, Nipper Hook Link and Pins

Replacement for:
Nordco 98410089



- Kit contains parts required to change one set of Nipper Hook Links and Pins
- Two kits required to change a complete machine

JK-54266875

Pin, Nipper Hook, Flanged

Replacement for:
Nordco 54266875



- ETD 150 alloy steel
- Used on Nordco spiker tie nipper assembly



Rail Products

A Harsco Rail Company

JK-46650032
Spike Jaw (Left)
Replacement for:
Nordco 46650032

- 4140 heat-treated alloy steel investment casting
- For use with Nordco spiking machines



JK-46650033
Spike Jaw (Right)
Replacement for:
Nordco 46650033

- 4140 heat-treated alloy steel investment casting
- For use with Nordco spiking machines



JK-302955
Spike Puller Claw
CP-044351114
Replacement for:
Nordco 46650037



- 4140 heat-treated alloy steel forging
- For use with Nordco spike-pulling machines
- Longer claw for improved pulling of spikes



Rail Products

A Harsco Rail Company

JK-86969201
16" Wheel
 CSX-09669692011
 CP-044629016
 Replacement for:
 Nordco 86969201



- 4140 heat treated alloy steel forging precision machined for fit up
- For use with Nordco machines

JK-199120
Jaw, Tie Exchanger
 CP-044701319
 Replacement for:
 Nordco 46670021



- Used on Nordco TRIPP machines
- 4340 heat treated alloy steel forged body
- Tungsten carbide teeth provided to increase grip on the tie
- Tungsten carbide plates and tungsten carbide grit overlay applied to reduce wear on the jaw



JK-199120XT
Jaw, Tie Exchanger
Deep Ballast
 CP-044701319
 Replacement for:
 Nordco 46670021



- Used on Nordco TRIPP machines
- 4340 heat treated alloy steel forged body
- Heavy duty deep ballast jaw
- Larger diameter tungsten carbide teeth provided to increase grip on the tie
- Tough Grit overlay applied to reduce wear on the jaw



JK-10560022
Anchor Pusher
 Replacement for:
 Nordco 10560022



- Heat-treated alloy steel body
- Hard facing applied to surface that contacts anchors



Rail Products

A Harsco Rail Company

Fits Kershaw/Knox Kershaw

JK-110

Adzer Bit

CP-043483073

Replacement for:

Kershaw 731420 & 580432

- Used on Kershaw Adzers
- Steel alloy body with tungsten carbide cutting insert



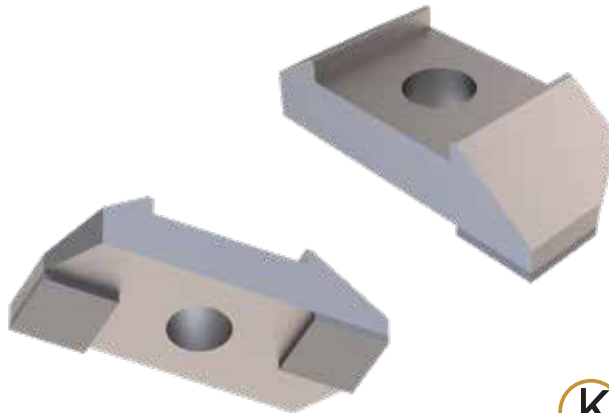
JK-200597

Adzer Bit

Replacement for:

Kershaw 9301193 & 580432

- Used on Kershaw Adzers
- Steel alloy body with tungsten carbide cutting inserts





Rail Products

A Harsco Rail Company

JK-560C

Carbide Tamping Tool

CP-012308935

Length: 505 mm / 19.88in

Paddle Width: 131 mm / 5.16 in

Paddle Height: 79 mm / 3.10 in

Weight: 12.67 kg / 27.9 lb

Replacement for:

Plasser: CU30.7620-FRI, CU30.8820-FRI,
CU30.10840-FRI

Fits Plasser models 2X, 3X, 4X, GRM
& 09-32



- 4140 alloy steel one-piece forging is highly abrasion resistant, giving longer life and increased strength
- Bull nose blunt leading edge decreases fracturing during all penetrations
- High hardness carbide extends life and ballast penetrations
- Increased carbide mass in critical wear locations
- Machined carbide pockets create a stronger braze joint and reduce carbide plate failure
- Tough Grit overlay applied to shank above paddle for longer life





Rail Products

A Harsco Rail Company

JK-560L

Carbide Tamping Tool

Length: 505 mm / 19.88in

Paddle Width: 114 mm / 4.50 in

Paddle Height: 79 mm / 3.10 in

Weight: 12.47 kg / 27.5 lb

Replacement for:

Plasser: CU30.7620-FRIII;

CU30.8820-FRIII; CU30.10840-FRIII



Fits Plasser models 2X, 3X, 4X,
GRM & 09-32

- 4140 alloy steel one-piece forging is highly abrasion resistant, giving longer life and increased strength
- Bull nose blunt leading edge decreases fracturing during all penetrations
- High hardness carbide extends life and ballast penetrations
- Increased carbide mass in critical wear locations
- Machined carbide pockets create a stronger braze joint and reduce carbide plate failure
- Tough Grit overlay applied to shank above paddle for longer life



JK-560LN

Carbide Tamping Tool

Length: 505 mm / 19.88in

Paddle Width: 95 mm / 3.75 in

Paddle Height: 79 mm / 3.10 in

Weight: 12.25 kg / 27 lbs

Replacement for:

Plasser: CU30.7620-FRV;

CU30.8820-FRV; CU30.10840-FRV



Fits Plasser models 2X, 3X, 4X,
GRM & 09-32

- 4140 alloy steel one-piece forging is highly abrasion resistant, giving longer life and increased strength
- Bull nose blunt leading edge decreases fracturing during all penetrations
- High hardness carbide extends life and ballast penetrations
- Increased carbide mass in critical wear locations
- Machined carbide pockets create a stronger braze joint and reduce carbide plate failure
- Tough Grit overlay applied to shank above paddle for longer life





Rail Products

A Harsco Rail Company

JK-578-4S-140

Carbide Tamping Tool

Length: 518 mm / 20.4 in

Paddle Width: 140 mm / 5.5 in

Paddle Height: 83 mm / 3.26 in

Weight: 13.69 kg / 30.2 lb

Replacement for:

Plasser: CU30.6220.BE



Fits Plasser models 08 & 09-475/4S machines

- 4140 alloy steel one-piece forging is highly abrasion resistant, giving longer life and increased strength
- Bull nose blunt leading edge decreases fracturing during all penetrations
- High hardness carbide extends life and ballast penetrations
- Increased carbide mass in critical wear locations
- Machined carbide pockets create a stronger braze joint and reduce carbide plate failure
- Tough Grit overlay applied to shank above paddle for longer life



JK-575-4S

Carbide Tamping Tool

Length: 571 mm / 22.5 in

Paddle Width: 134 mm / 5.26 in

Paddle Height: 83 mm / 3.25 in

Weight: 15.15 kg / 33.4 lb

Replacement for:

Plasser: CU30.6320.BE



Fits Plasser models 08 & 09-475/4S machines

- 4140 alloy steel one-piece forging is highly abrasion resistant, giving longer life and increased strength
- Bull nose blunt leading edge decreases fracturing during all penetrations
- High hardness carbide extends life and ballast penetrations
- Increased carbide mass in critical wear locations
- Machined carbide pockets create a stronger braze joint and reduce carbide plate failure
- Tough Grit overlay applied to shank above paddle for longer life





Rail Products

A Harsco Rail Company

JK-535N-MXC

Carbide Tamping Tool

Length: 480 mm / 18.9 in
Paddle Width: 143 mm / 5.63 in
Paddle Height: 83 mm / 3.25 in
Weight: 9.71 kg / 21.4 lb
Replacement for:
Plasser CU30.4020-FRI
Plasser CU30.4520-FRI



Fits Plasser model 07, 08 and 09-16 tool machines
Plasser model 07, 08 and 09-32 tool machines

- 4140 alloy steel one-piece forging is highly abrasion resistant, giving longer life and increased strength
- Bull nose blunt leading edge decreases fracturing during all penetrations
- High hardness carbide extends life and ballast penetrations
- Increased carbide mass in critical wear locations
- Machined carbide pockets create a stronger braze joint and reduce carbide plate failure
- Tough Grit overlay applied to shank above paddle for longer life



JK-515N-MXR

Carbide Tamping Tool

Length: 480 mm / 18.9 in
Paddle Width: 114 mm / 4.5 in
Paddle Height: 83 mm / 3.25 in
Weight: 9.35 kg / 20.6 lb
Replacement for:
Plasser CU30.4020-FRII
Plasser CU30.4520-FRII



Fits Plasser model 07, 08 and 09-16 tool machines
Plasser model 07, 08 and 09-32 tool machines

- 4140 alloy steel one-piece forging is highly abrasion resistant, giving longer life and increased strength
- Bull nose blunt leading edge decreases fracturing during all penetrations
- High hardness carbide extends life and ballast penetrations
- Increased carbide mass in critical wear locations
- Machined carbide pockets create a stronger braze joint and reduce carbide plate failure
- Tough Grit overlay applied to shank above paddle for longer life





Rail Products

A Harsco Rail Company

JK-515N-MXL

Carbide Tamping Tool

Length: 480 mm / 18.9 in

Paddle Width: 114 mm / 4.5 in

Paddle Height: 83 mm / 3.25 in

Weight: 9.35 kg / 20.6 lb

Replacement for:

Plasser CU30.4020-FRIII

Plasser CU30.4520-FRIII



Fits Plasser model 07, 08 and 09-16 tool machines

Plasser model 07, 08 and 09-32 tool machines

- 4140 alloy steel one-piece forging is highly abrasion resistant, giving longer life and increased strength
- Bull nose blunt leading edge decreases fracturing during all penetrations
- High hardness carbide extends life and ballast penetrations
- Increased carbide mass in critical wear locations
- Machined carbide pockets create a stronger braze joint and reduce carbide plate failure
- Tough Grit overlay applied to shank above paddle for longer life



JK-535N-AXC

Carbide Tamping Tool

Length: 420 mm / 16.5 in

Paddle Width: 143 mm / 5.63 in

Paddle Height: 83 mm / 3.25 in

Weight: 8.74 kg / 19.3 lb

Replacement for:

Plasser CU30.4620-FRI

Plasser CU30.4720-FRI



Fits Plasser model 07, 08 and 09-16 tool machines

Plasser model 07, 08 and 09-32 tool machines

- 4140 alloy steel one-piece forging is highly abrasion resistant, giving longer life and increased strength
- Bull nose blunt leading edge decreases fracturing during all penetrations
- High hardness carbide extends life and ballast penetrations
- Increased carbide mass in critical wear locations
- Machined carbide pockets create a stronger braze joint and reduce carbide plate failure
- Tough Grit overlay applied to shank above paddle for longer life





Rail Products

A Harsco Rail Company

JK-515N-AXR

Carbide Tamping Tool

Length: 420 mm / 16.5 in
Paddle Width: 114 mm / 4.5 in
Paddle Height: 83 mm / 3.25 in
Weight: 8.37 kg / 18.5 lb
Replacement for:
Plasser CU30.4620-FRII
Plasser CU30.4720-FRII



Fits Plasser model 07, 08 and 09-16 tool machines
Plasser model 07, 08 and 09-32 tool machines

- 4140 alloy steel one-piece forging is highly abrasion resistant, giving longer life and increased strength
- Bull nose blunt leading edge decreases fracturing during all penetrations
- High hardness carbide extends life and ballast penetrations
- Increased carbide mass in critical wear locations
- Machined carbide pockets create a stronger braze joint and reduce carbide plate failure
- Tough Grit overlay applied to shank above paddle for longer life



JK-515N-AXL

Carbide Tamping Tool

Length: 420 mm / 16.5 in
Paddle Width: 114 mm / 4.5 in
Paddle Height: 83 mm / 3.25 in
Weight: 8.37 kg / 18.5 lb
Replacement for:
Plasser CU30.4620-FRII
Plasser CU30.4720-FRII



Fits Plasser model 07, 08 and 09-16 tool machines
Plasser model 07, 08 and 09-32 tool machines

- 4140 alloy steel one-piece forging is highly abrasion resistant, giving longer life and increased strength
- Bull nose blunt leading edge decreases fracturing during all penetrations
- High hardness carbide extends life and ballast penetrations
- Increased carbide mass in critical wear locations
- Machined carbide pockets create a stronger braze joint and reduce carbide plate failure
- Tough Grit overlay applied to shank above paddle for longer life





Rail Products

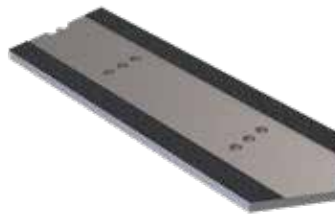
A Harsco Rail Company

JK-198845
Broom Clamp
Assembly
 CP-043354456
 Replacement for:
 Kershaw 802330



- For use on Kershaw, Knox Kershaw and other ballast regulator brooms
- Cast steel clamp body with ridges to hold broom elements securely
- Supplied with 5/8-inch Grade 8 capscrew and lockwasher

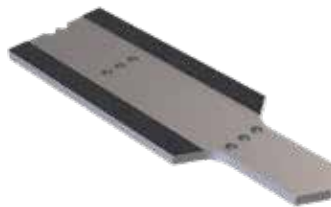
JK-730MAX
Plow Blade, 2 Hole
 Fits: Kershaw and Knox Kershaw
 OEM part numbers: 194486,
 9015531, 116657, 155153



- Boron steel heat treated to 44-48 HRC
- "ToughGrit" overlay applied to wearing surfaces and edges



JK-730MAXCT
Plow Blade, 2 Hole, Concrete
 Fits: Kershaw and Knox Kershaw
 OEM part numbers: 166656, 194485



- Boron steel heat treated to 44-48 HRC
- "ToughGrit" overlay applied to wearing surfaces and edges
- For use on concrete, steel or wood ties with elastic fasteners





Rail Products

A Harsco Rail Company

JK-740MAX

Plow Blade, 3 Hole

Fits: Kershaw and Knox Kershaw
OEM part numbers: 194485, 116656,
9015532, 9001087, 9011359,
043683037



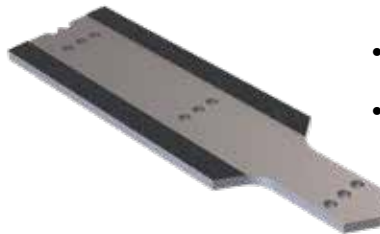
- Boron steel heat treated to 44-48 HRC
- "ToughGrit" overlay applied to wearing surfaces and edges



JK-740MAXCT

Plow Blade, 3 Hole, Concrete

Fits: Kershaw and Knox Kershaw
OEM part numbers: 116656, 194485,
9001087



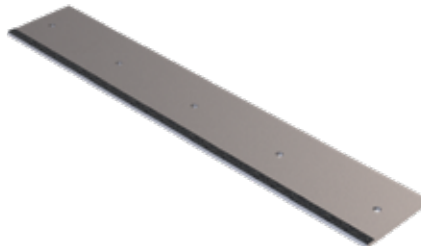
- Boron steel heat treated to 44-48 HRC
- "ToughGrit" overlay applied to wearing surfaces and edges
- For use on concrete, steel or wood ties with elastic fasteners



JK-171031

Plow Blade, 5 Hole

Fits: Kershaw and Knox Kershaw
OEM part numbers: 218508, 147626



- Boron steel heat treated to 44-48 HRC
- "ToughGrit" overlay applied to wearing surfaces and edges





Rail Products

A Harsco Rail Company

JK-750-1-7

Skid Plate, 7-inch, Carbide

Fits: Kershaw and Knox Kershaw
OEM part numbers: 9031952,
176386, 109617



- 4140 heat-treated alloy steel body
- Hybrid construction with "ToughGrit" overlay in high wear areas



JK-715

Z Bar, Outboard

Fits: Kershaw



- Boron steel heat treated to 44-48 HRC
- "SuperCarb" tiles applied to the wearing surfaces



JK-725

Z Bar, Inboard

Fits: Kershaw



- Boron steel heat treated to 44-48 HRC
- "SuperCarb" tiles applied to the wearing surfaces





Rail Products

A Harsco Rail Company

JK-200602

Plow Blade, 2 Hole

Fits: Knox Kershaw 9009018



- 2 hole plow blade
- Used on Knox Kershaw models KBR-850, 875, 900
- Boron steel body with Tough Grit overlay applied to wearing surfaces and edges



JK-200602CT

Plow Blade, 2 Hole Concrete

Fits: Knox Kershaw 9009019



- 2 hole plow blade - concrete ties
- Used on Knox Kershaw models KBR-850, 875, 900
- Boron steel body with Tough Grit overlay applied to wearing surfaces and edges
- For use on concrete, steel or wood ties with elastic fasteners



JK-164415

Wheel, 16 inch, Keyed

Fits: Kershaw 164415



- Forged and heat treated alloy steel
- Used on Kershaw tie crane, horizontal and rotary scarifiers
- Replaces Kershaw part number 164415



Rail Products

A Harsco Rail Company

JK-NOR16X.12X1
16-inch Cutoff Wheel
T1 Reinf Cutoff
16" x 1/8" x 1"
4800 MAX RPM

Sold by Box (Qty of 10)



- High performance zirconia alumina/ engineered aluminum oxide
- R (rough sides)
- Designed for high-speed fixtured hydraulic or gas-powered saws
- Expertly cuts all rail types
- Longest lasting and fastest cutting
- Maximize straightness of cut

JK-NOR14X.12X1
14-inch Cutoff Wheel
T1 Reinf Cutoff
14" x 1/8" x 1" - cutoff
5400 MAX RPM

Sold by Box (Qty of 10)



- High performance zirconia alumina/ engineered aluminum oxide
- R (rough sides)
- Designed for high-speed fixtured hydraulic or gas-powered saws
- Expertly cuts all rail types
- Longest lasting and fastest cutting
- Maximize straightness of cut

JK-NOR8X1X.62
8-inch Grinding Wheel
Type 1 Portable
8" x 1" x 5/8"
6000 MAX RPM

Sold by Box (Qty of 10)



- Zirconia alumina / silicon carbide blend
- More firable zirconia alumina grain & durable resin technologies
- Reinforced with S-webs
- Higher metal removal rates, faster, freer-cutting than standard zirconia blends.
- Up to 5X the life of aluminum oxide products; better grinding action
- Engineered for Maintenance of Way market



Rail Products

A Harsco Rail Company

JK-NOR8X1X.75
8-inch Grinding Wheel
Type 1 Portable
8" x 1" x 3/4"
6000 MAX RPM

Sold by Box (Qty of 10)



- Zirconia alumina / silicon carbide blend
- More firable zirconia alumina grain & durable resin technologies
- Reinforced with S-webs
- Higher metal removal rates, faster, freer-cutting than standard zirconia blends.
- Up to 5X the life of aluminum oxide products; better grinding action
- Engineered for Maintenance of Way market

JK-NOR8X1X1
8-inch Grinding Wheel
Type 1 Portable
8" x 1" x 1"
6000 MAX RPM

Sold by Box (Qty of 10)



- Zirconia alumina / silicon carbide blend
- More firable zirconia alumina grain & durable resin technologies
- Reinforced with S-webs
- Higher metal removal rates, faster, freer-cutting than standard zirconia blends.
- Up to 5X the life of aluminum oxide products; better grinding action
- Engineered for Maintenance of Way market

JK-NOR8X2X1.38
8-inch Grinding Wheel
Type 2 Cylinder
8" x 2" plate mounted -2" Rim;
BP ME163913
4500 MAX RPM

Sold by Box (Qty of 5)



- Premium Zirconia Alumina grain
- Durable resin technology
- Attached plate for easy mounting
- Engineered for higher power grinders
- Improved life and much faster cut-rate vs. aluminum oxide products
- Engineered for Maintenance of Way market
- Fiberglass Reinforced

JK-NOR6X3X.62-11
6-inch Grinding Wheel
Type 6 Portable Cup
6" x 3" x 5/8-11" Rim 2"
BP ME151687
6000 MAX RPM

Sold by Box (Qty of 3)



- Premium Zirconia Alumina grain
- Durable resin technology
- Designed for surfacing guide grinder
- Engineered for higher power grinders
- Improved life and much faster cut-rate vs. aluminum oxide products
- Engineered for Maintenance of Way market



Rail Products

A Harsco Rail Company

JK-765-CB

765 Conical Undercutter Bit

Replacement for:
Harsco Rail 4047390

- Carbide-tipped undercutter bit
- Supplied with mating clip
- Used on Harsco Rail Gopher and Super Gopher machines



JK-642

Tie Gripper Pad

Replacement for:
Harsco Rail 311732-1



- 4140 alloy steel forged body
- Tungsten carbide teeth provided to increase grip on tie
- Tungsten carbide plates applied between the teeth to reduce wear on the jaw
- Used on Harsco Rail 925 Tie Inserter / Remover



JK-160057

Wheel

Replacement for:
Harsco Rail 160057



- Forged and heat treated alloy steel
- Used on Harsco Rail TKO Tie Remover and Inserter
- Replaces Harsco Rail 160057



Tampers
Harsco Rail

Mark Series

JK-215L Mark Carbide Tamping Tool (Left).....	1
JK-215R Mark Carbide Tamping Tool (Right).....	1
JK-215LN Mark Carbide Tamping Tool (Left, Narrow).....	2
JK-215RN Mark Carbide Tamping Tool (Right, Narrow).....	2
JK-H4388WAC Mark Carbide Tamping Tool - LH Carbide.....	2
JK-H4388WAD T Mark Carbide Tamping Tool - RH Carbide.....	3
JK-197940 Mark Rail Clamp.....	3
JK-197940-1 Mark Rail Clamp Single Hook.....	3
JK-197940-2 Mark Rail Hook Single.....	3
JK-B6090Y02 MK IV Rail Clamp.....	4
JK-A3033X01 Mk III Rail Clamp.....	4
JK-X68297U Mark Squeeze Cylinder.....	4
JK-193801 Mark Carbide Reaction Pad.....	4
JK-198275 Mark Carbide Bias Pad Assembly.....	5
JK-301234 Mark Carbide Pad Replacement Kit.....	5
JK-W750980 Wheel 24".....	5
JK-X766874-01-002 Wheel 30".....	5

Jackson Series

JK-635 Jackson Carbide Tamping Tool.....	6
JK-196101 6700 Rail Hook.....	6
JK-215C Carbide Tamping Tool (6700 PD WH).....	6
JK-636L Carbide Tamping Tool (2400).....	7
JK-636R Carbide Tamping Tool (2400).....	7

Fits Nordco

JK-0969 Spike Anvil.....	8
JK-171041 Nipper Hook.....	8
JK-54007502 Pin, Nipper Hook, Link.....	8
JK-98410089 Kit, Nipper Hook Link and Pins.....	8
JK-54266875 Pin, Nipper Hook, Flanged.....	8
JK-46650032 Spike Jaw (Left).....	9
JK-46650033 Spike Jaw (Right).....	9
JK-302955 Spike Puller Claw.....	9
JK-86969201 16" Wheel.....	10
JK-199120 Jaw, Tie Exchanger.....	10
JK-199120XT Jaw, Tie Exchanger.....	10
JK-10560022 Anchor Pusher.....	10



Rail Products

A Harsco Rail Company

Fits Kershaw/Knox Kershaw

JK-110 Adzer Bit.....	11
JK-200597 Adzer Bit.....	11

Fits Plasser

JK-560C Carbide Tamping Tool.....	12
JK-560L Carbide Tamping Tool.....	13
JK-560LN Carbide Tamping Tool.....	13
JK-578-4S-140 Carbide Tamping Tool.....	14
JK-575-4S Carbide Tamping Tool.....	14
JK-535N-MXC Carbide Tamping Tool.....	15
JK-515N-MXR Carbide Tamping Tool.....	15
JK-515N-MXL Carbide Tamping Tool.....	16
JK-535N-AXC Carbide Tamping Tool.....	16
JK-515N-AXR Carbide Tamping Tool.....	17
JK-515N-AXL Carbide Tamping Tool.....	17

Ballast Regulator

JK-198845 Broom Clamp Assembly.....	18
JK-730MAX Plow Blade, 2 Hole.....	18
JK-730MAXCT Plow Blade, 2 Hole, Concrete.....	18
JK-740MAX Plow Blade, 3 Hole.....	19
JK-740MAXCT Plow Blade, 3 Hole, Concrete.....	19
JK-171031 Plow Blade, 5 Hole.....	19
JK-750-1-7 Skid Plate, 7-inch, Carbide.....	20
JK-715 Z Bar, Outboard.....	20
JK-725 Z Bar, Inboard.....	20
JK-200602 Plow Blade, 2 Hole.....	21
JK-200602CT Plow Blade, 2 Hole Concrete.....	21
JK-164415 Wheel, 16 inch, Keyed.....	21

Hand Tools/Abrasives/Consumables

JK-NOR16X.12X1 16-inch Cutoff Wheel.....	22
JK-NOR14X.12X1 14-inch Cutoff Wheel.....	22
JK-NOR8X1X.62 8-inch Grinding Wheel.....	22
JK-NOR8X1X.75 8-inch Grinding Wheel.....	23
JK-NOR8X1X1 8-inch Grinding Wheel.....	23
JK-NOR8X2X1.38 8-inch Grinding Wheel.....	23
JK-NOR6X3X.62-11 6-inch Grinding Wheel.....	23

Other Harsco MOW

JK-765-CB 765 Conical Undercutter Bit.....	24
JK-642 Tie Gripper Pad.....	24
JK-160057 Wheel.....	24



Rail Products

A Harsco Rail Company

(800) 800-6410

railparts@harsco.com

Order online @ parts.harscorail.com

Part No.: 5074916
Rev: 090518