

# Product Improvement

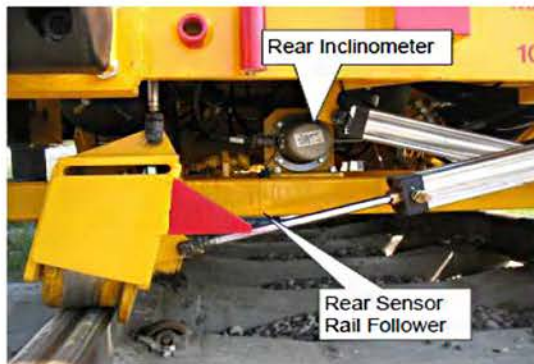
## Model 6700 Tampers

Part # 5045459 (Rear Inclinometer Kit)

Plots the super elevation of the track immediately behind the machine

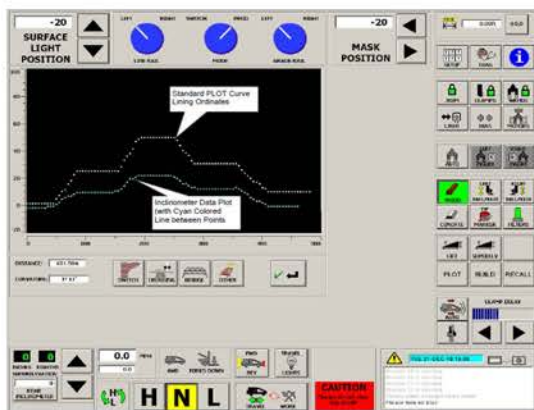
### SUMMARY

The rear inclinometer is located at the back of the 6700. The unit provides helpful information to the operator concerning the track super elevation.



### Benefits

- Plots the super elevation during curve measurement. The super elevation of the track is plotted along with the standard ordinate curve plot.
- Plots the actual super elevation immediately behind the machine while tamping. When working curves, this is displayed with the curve ordinate plot.
- Plots the comparison of the existing track super elevation against the target or design value. This can be done as a measure run any time – before or after track maintenance.



The super elevation of the track is plotted along with the standard ordinate curve plot. This allows the operator to see how much super elevation correction is required in the curve and judge whether ballast conditions are adequate for the correction needed.



2401 Edmund Road  
West Columbia, SC 29171 USA  
Tel: (803) 822-9160 Fax: (803) 822-8107  
Email: railparts@harsco.com  
www.harscorail.com

**HARSCO**  
RAIL