



# Harsco Track Technologies

Harsco

www.harscotrack.com

---

## SERVICE BULLETIN MAINTENANCE OF WAY EQUIPMENT

---

**DATE:** 8-8-2002 **BULLETIN NO:** 02-020

**TITLE:** 200022 PRE-SQUEEZE POTENTIOMETER

**RATING:**

<input type="checkbox"/>	<b>DIRECTIVE</b> (Action Is Required)	<input type="checkbox"/>	<b>ALERT</b> (Potential Problem)
<input type="checkbox"/>	<b>INFORMATION</b> (Action Is Optional)	<input checked="" type="checkbox"/>	<b>PRODUCT IMPROVEMENT</b> (Enhance Product)

**PRODUCT SERIES / MODEL:** RMC306 Series A / B ANCHOR BOXER<sup>®</sup> Anchor Applicators

**SERIAL NO:** All Models

**SUMMARY:** If the original pre-squeeze timer relay part # 502663000 was replaced by a new pre-squeeze timer relay part # F026006, the original pre-squeeze 150k potentiometer part # 108329000 marked 800T - U50 - 0.15 mΩ (meg ohms) must be replaced with a new pre-squeeze 500k potentiometer part # 200022 marked 800T - U55 - 0.5 mΩ (meg ohms) for the new timer relay to operate properly. See Service Bulletin 02-016 to change the pre-squeeze timer.

The original 150k potentiometer allows the new timer relay to operate for about 1/3 of a second and as a result the anchors may be left too wide during the pre-squeeze cycle. The anchors then have to be dragged farther in during the squeeze cycle which can cause the squeeze pressure switch to trip prematurely and apply the anchors to the rail before they are properly boxed against the sides of the tie.

**OPERATIONAL IMPACT:** To improve the performance of the new pre-squeeze timer relay part # F026006 to improve the anchor application quality and consistency.

**ACTION:** Order one pre-squeeze potentiometer part # 200022 to replace the original pre-squeeze potentiometer part # 108329000 on each machine.

**CONTACT:** To order the Pre-Squeeze Potentiometer, please contact the Service Department at the Columbia, SC. facility, (803) 822-9160.

**SAFETY INFORMATION**

- **FOLLOW APPLICABLE RAILROAD LOCKOUT - TAGOUT PROCEDURE TO REMOVE ALL ENERGY SOURCES FROM MACHINE. FAILURE TO COMPLY COULD RESULT IN SEVERE BODILY INJURY.**

**SERVICE GROUP INSTALLATION**

- All Models Except B2-27 and Brainerd Rebuilt - See Figure 1, Figure 2 and Figure 3
- Models B2-27 and Brainerd Rebuilt Only - See Figure 4, Figure 5 and Figure 6 or Figure 7

1. Remove the nut and knob from the existing pre-squeeze potentiometer (A) in the Control Box on the right side of the machine to remove the potentiometer (A) from the panel.
2. Open the panel of the Control Box. Disconnect the two wires that are connected to the terminals #1 and #2 of the existing pre-squeeze potentiometer (A) one at a time and re-connect to the same terminals #1 and #2 on the new pre-squeeze potentiometer (1).
3. Install the new pre-squeeze potentiometer (1) in the panel and re-install the nut and knob finger tight. Verify that the knob points to the WIDE setting on the panel decal with the potentiometer turned fully counter-clockwise and to the NARROW setting on the panel decal with the potentiometer turned fully clockwise. Then tighten the nut to prevent the potentiometer from turning at the ends of its rotation.
4. All Models Except B2-27 and Brainerd Rebuilt: Locate and verify that pre-squeeze timer relay K63 (B) part # F026006 is installed in the pre-squeeze relay socket inside of the Control Box. See Service Bulletin 02-016. Then close and secure the panel of the Control Box.

*Note: If the timer relay is any other color than black, it must be replaced with a new timer relay part # F026006 to work with the new pre-squeeze potentiometer.*

5. Models B2-27 and Brainerd Rebuilt Only: Close and secure the panel of the Control Box. Then open the cover of the Relay Box located on the rear of the machine next to the fuel tank. Locate and verify that pre-squeeze timer relay K3225 (B) part # F026006 is installed in the pre-squeeze relay socket inside of the Relay Box. See Service Bulletin 02-016. Then close and secure the cover of the Relay Box.

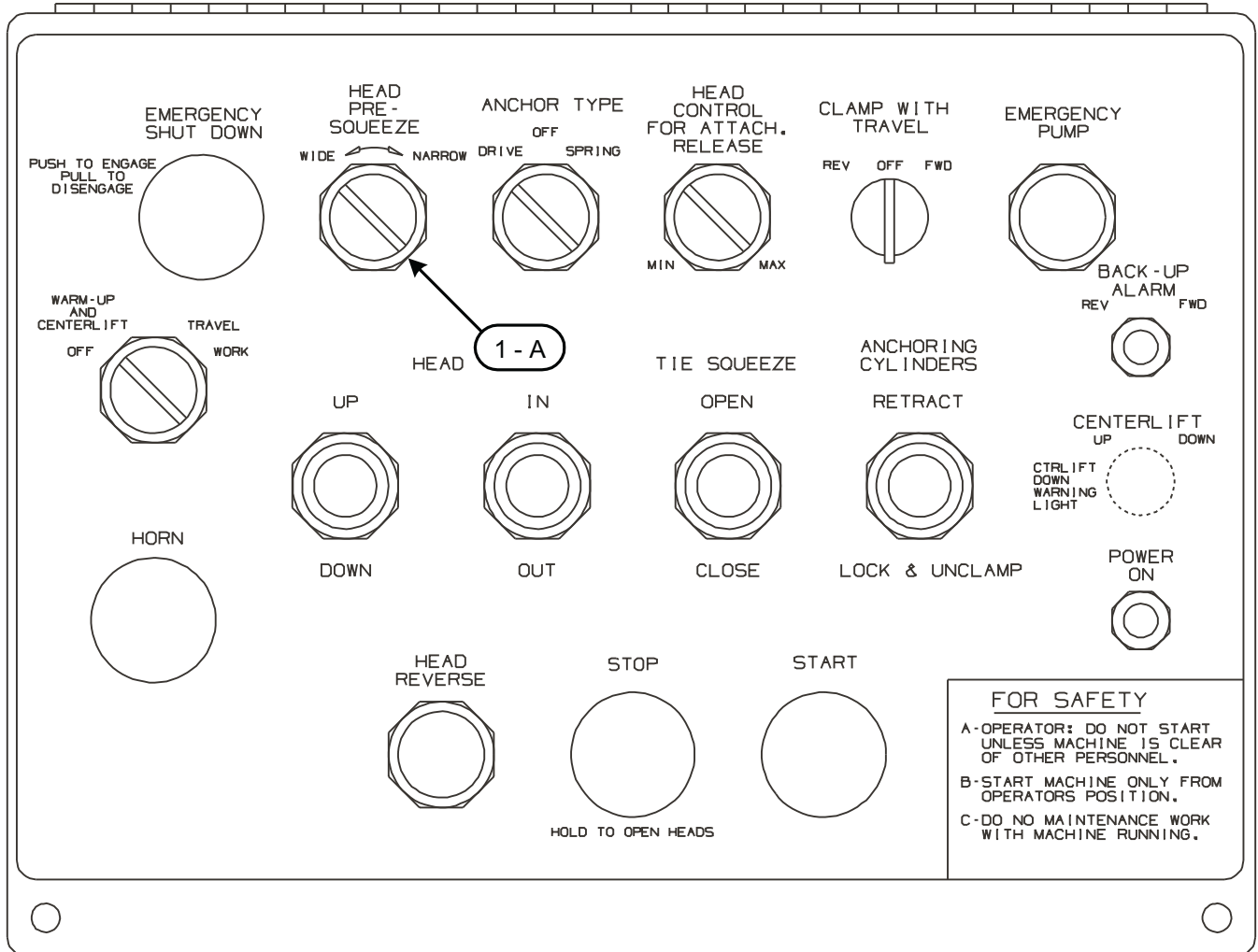
*Note: If the timer relay is any other color than black, it must be replaced with a new timer relay part # F026006 to work with the new pre-squeeze potentiometer.*

6. Start the engine and return the machine to operation.
7. Verify that the work-head operates properly and that the pre-squeeze function can be controlled from the WIDE position to the NARROW position. See Service Bulletin 02-016.
8. Best operation under normal track conditions should be obtained with the pre-squeeze potentiometer set to approximately MID position, half-way between WIDE and NARROW.

**SERVICE GROUP INSTALLATION**

SE02A151A-1A

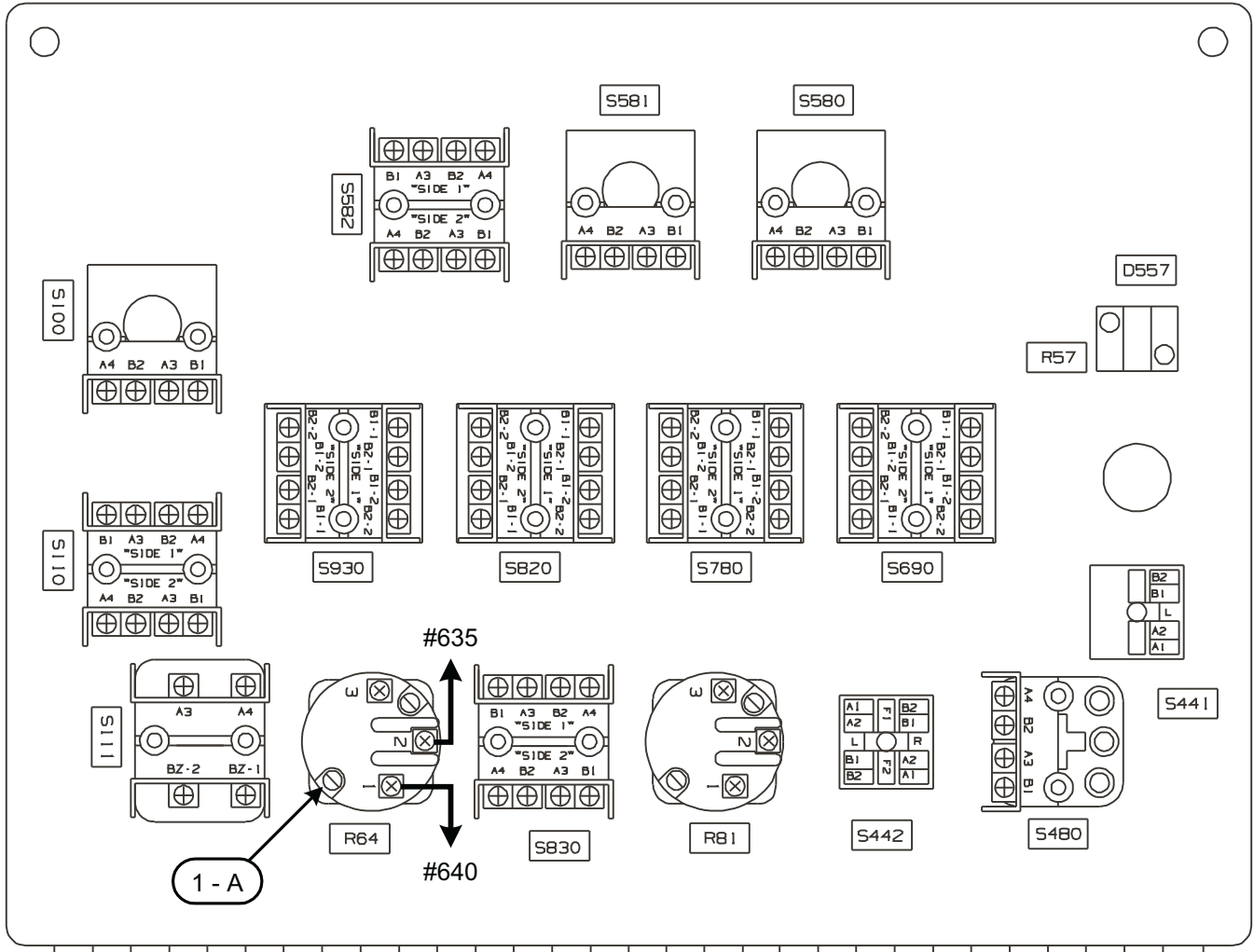
**FIGURE 1**  
**PRE-SQUEEZE POTENTIOMETER INSTALLATION**  
 Outside of Control Box Cover - All Models Except B2-27 and Brainerd Rebuilt



SERVICE GROUP INSTALLATION

SE02A151A-1B

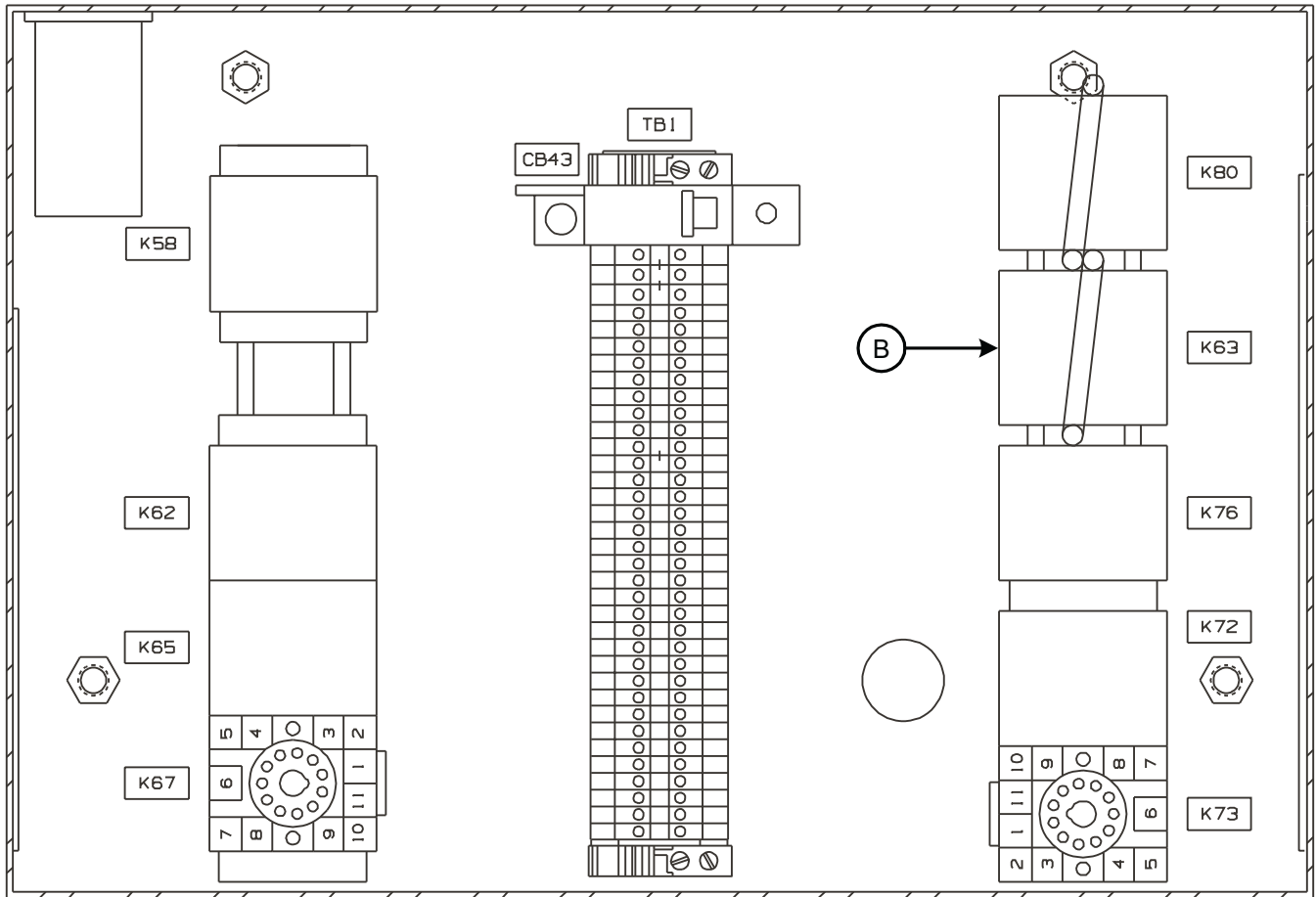
FIGURE 2  
PRE-SQUEEZE POTENTIOMETER INSTALLATION  
Inside of Control Box Cover - All Models Except B2-27 and Brainerd Rebuilt



SERVICE GROUP INSTALLATION

SE02A151A-2

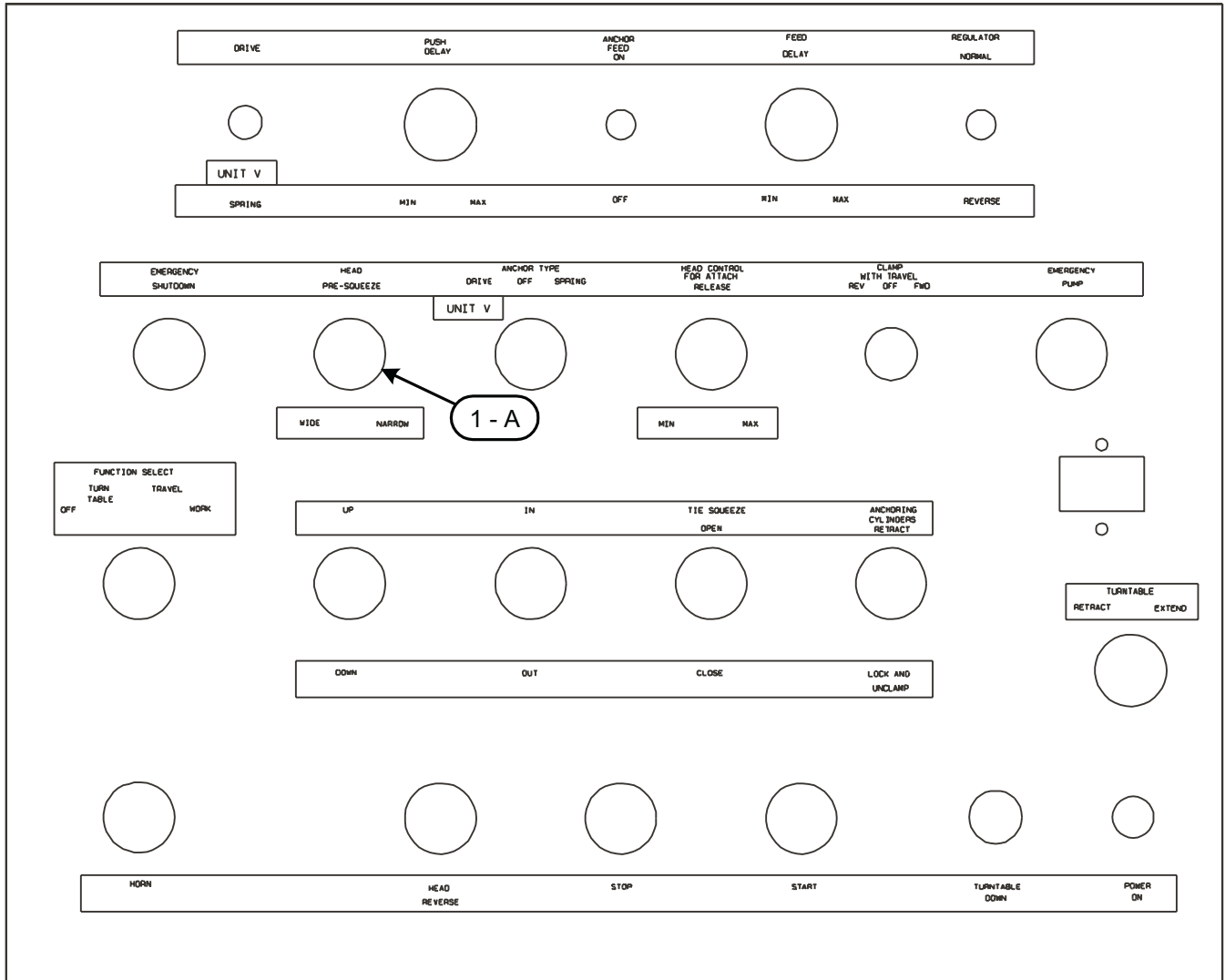
FIGURE 3  
PRE-SQUEEZE TIMER RELAY LOCATION  
Inside of Control Box - All Models Except B2-27 and Brainerd Rebuilt



SERVICE GROUP INSTALLATION

SE02A154A-1A

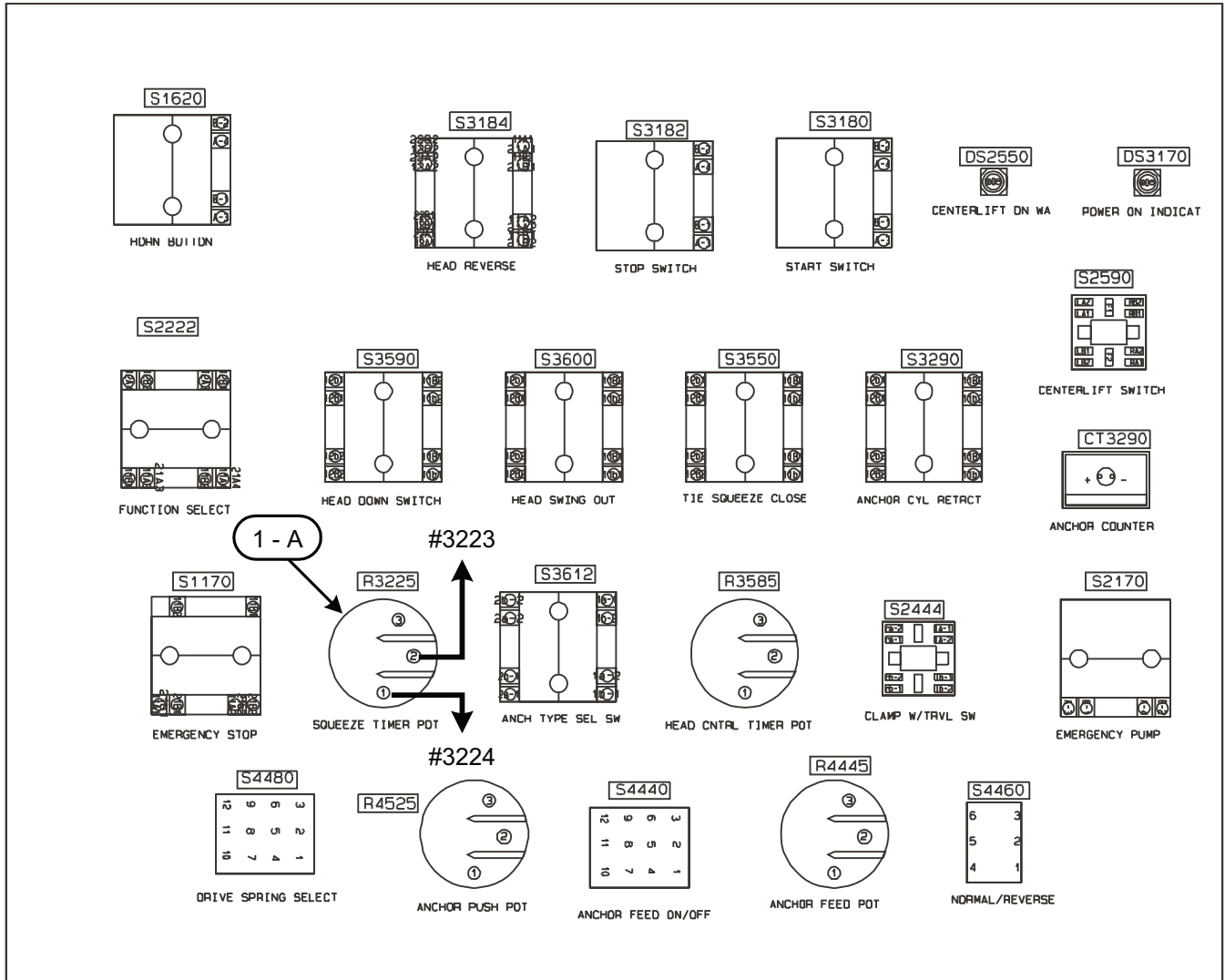
FIGURE 4  
PRE-SQUEEZE POTENTIOMETER INSTALLATION  
Outside of Control Box Cover - Models B2-27 and Brainerd Rebuilt Only



SERVICE GROUP INSTALLATION

SE02A154A-1B

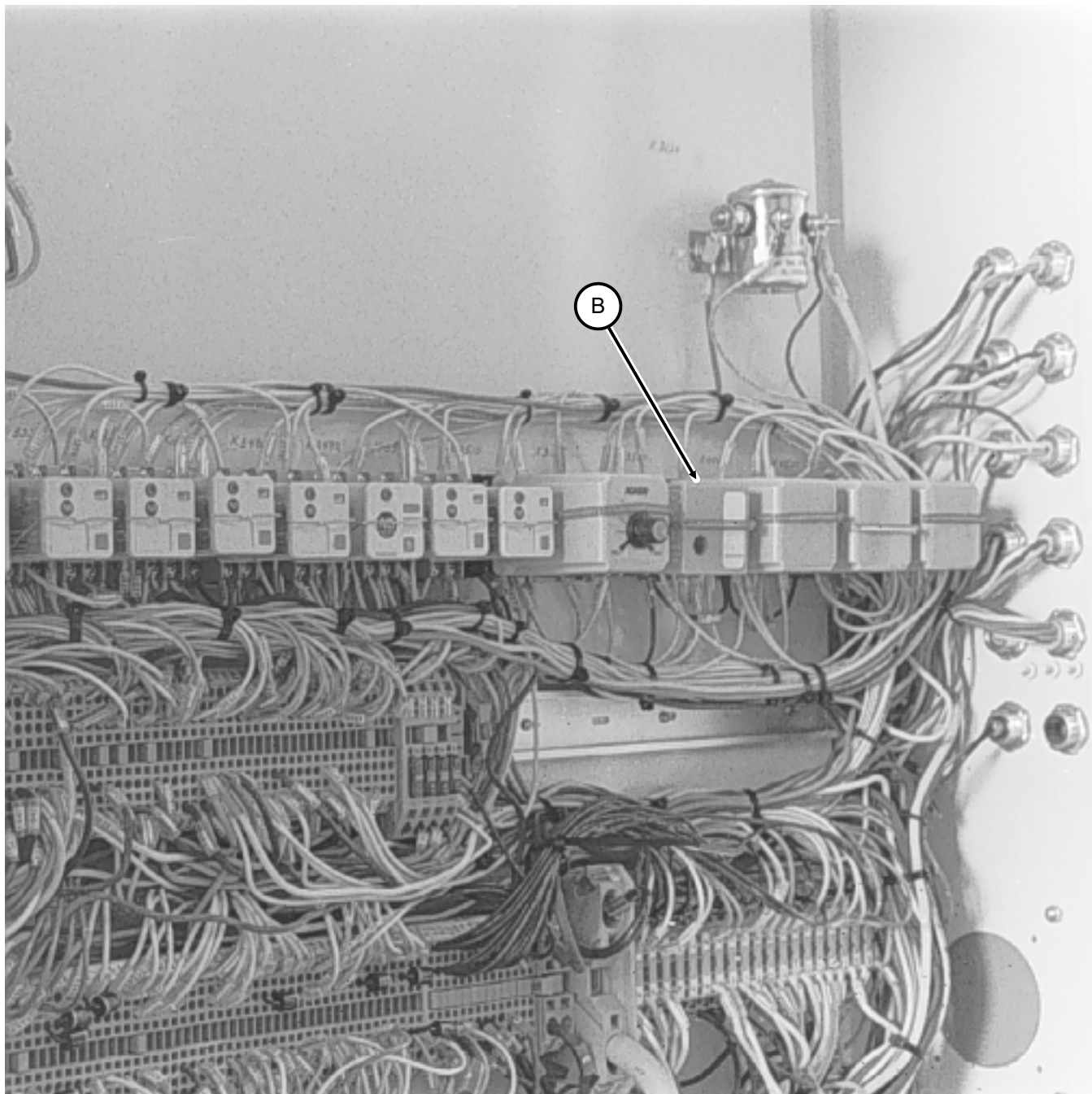
FIGURE 5  
 PRE-SQUEEZE POTENTIOMETER INSTALLATION  
 Inside of Control Box Cover - Models B2-27 and Brainerd Rebuilt Only



**SERVICE GROUP INSTALLATION**

97-207

**FIGURE 6**  
**PRE-SQUEEZE TIMER RELAY LOCATION**  
Inside of Relay Box - Models B2-27 Only

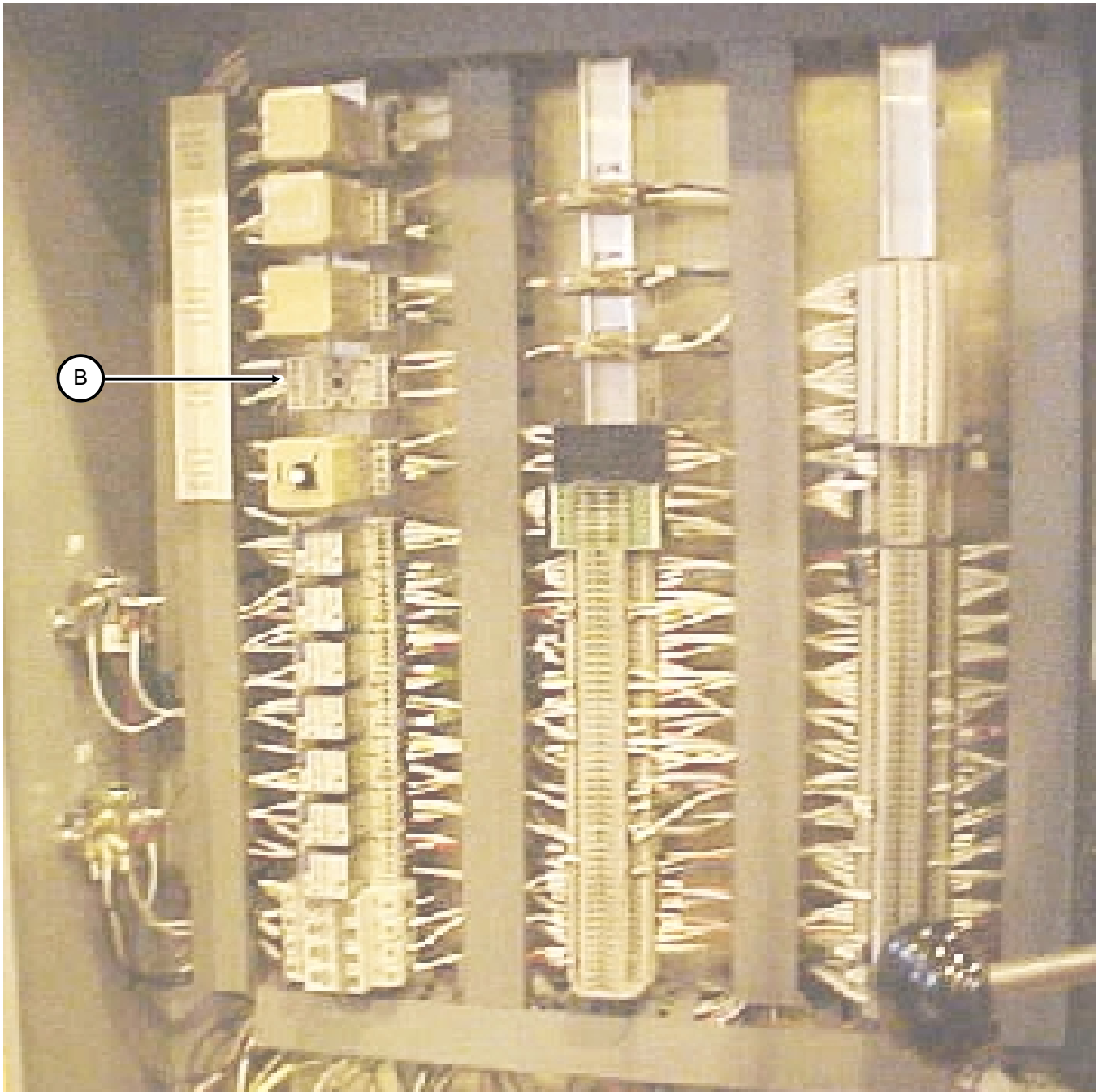




**SERVICE GROUP INSTALLATION**

Brainerd 3

**FIGURE 7**  
**PRE-SQUEEZE TIMER RELAY LOCATION**  
Inside of Relay Box - Brainerd Rebuilt Models Only



**SERVICE GROUP PARTS LIST** - See Figure 1 or Figure 4

ITEM	PART NO	DESCRIPTION	QTY
1	200022	Potentiometer, Pre-Squeeze .....	1

**© 2002 HARSCO TRACK TECHNOLOGIES, HARSCO CORPORATION**

415 North Main Street  
Fairmont, MN  
56031-1837  
Tel: (507) 235-3361  
Fax: (507) 235-7370

2401 Edmund Road, Box 20  
Cayce-West Columbia, SC  
29171-0020  
Tel: (803) 822-9160  
Fax: (803) 822-7471

200 South Jackson Road  
Ludington, MI  
49431  
Tel: (231) 843-3431  
Fax: (231) 843-4830