



www.harscorail.com

---

**SERVICE BULLETIN**  
**MAINTENANCE OF WAY EQUIPMENT**

---

**DATE:** 10-2016

**BULLETIN NO:** 16-005

**TITLE:** COLD START PROCEDURE

**RATING:**

<input type="checkbox"/>	<b>DIRECTIVE</b> (Action Is Required)	<input checked="" type="checkbox"/>	<b>ALERT</b> (Potential Problem)
<input type="checkbox"/>	<b>INFORMATION</b> (Action Is Optional)	<input type="checkbox"/>	<b>PRODUCT IMPROVEMENT</b> (Enhance Product)

**PRODUCT SERIES / MODEL:** GO4S-III-CN-SH UNDERCUTTER

**SERIAL NO:** 4711654

**SUMMARY:** A procedure has been created and must be followed in all conditions. Damage to hydraulic pumps and other components may occur if the procedure is not followed.

**OPERATIONAL IMPACT:** Hydraulic pumps and other hydraulic components could fail if the hydraulic fluid is not allowed to warm to 40°C (100°F).

**ACTION:** Follow the instructions in this Service Bulletin to safely operate hydraulic pumps and components in colder ambient temperatures.

**CONTACT:** Harsco Rail Service Department  
Columbia, SC Facility  
(803) 822-7546

**SAFETY INFORMATION**

- **FOLLOW APPLICABLE RAILROAD LOCKOUT - TAGOUT PROCEDURES TO DISABLE ENERGY SOURCES WHEN PERFORMING MAINTENANCE, MAKING ADJUSTMENTS, OR REPAIRS TO THE EQUIPMENT. FAILURE TO HEED THESE WARNINGS COULD RESULT IN SEVERE BODILY INJURY.**

**AFTER MAIN ENGINE STARTS:**

- See Figures 1 and 2

1. Check the Engine Diagnostic Gauge (1) right after starting the main engine. If no oil pressure is indicated on the display within 15 seconds - STOP THE ENGINE IMMEDIATELY and determine the cause.
2. Press the Jupiter II On/Off Switch (2) to turn on the Jupiter II system. The light within the switch will turn on.
3. When the Jupiter II screen appears, take control of the machine by pressing the Control Button in the lower right hand corner of the Jupiter Main Screen.

*Note: Only one station can have control at any time.*

4. Set the computer monitor screen to display the Engine Information Panel.
5. Check the following gauges, displays and indicator lights for proper machine operation. Allow approximately 3 to 5 minutes for the air system to fully charge.
  - a. Engine Temperature Display (3): The engine temperature display should gradually rise to the normal operating range. The normal operating temperature range is 82° - 93° C (180° - 200° F) after full engine warm up.
  - b. Engine RPM Display: The engine RPM display should show an idle speed of approximately 900 RPM.
  - c. Hydraulic Oil Level Display (4): The hydraulic oil level display indicates the current hydraulic oil level in the hydraulic reservoir. The hydraulic oil level must be above the bottom of the sight gauge. The hydraulic tank should contain 2365 to 2555 liters (625 to 675 gallons).
  - d. Hydraulic Oil Temperature Display (5): The normal operating temperature range is 52 - 71° C (125 -160° F). The temperature will vary depending on operating conditions.
6. Allow the engine to operate at idle RPM (approximately 900 RPM) until the hydraulic system fluid is warmed up to a minimum of 40° C (100° F) to provide adequate lubrication and prevent equipment damage.

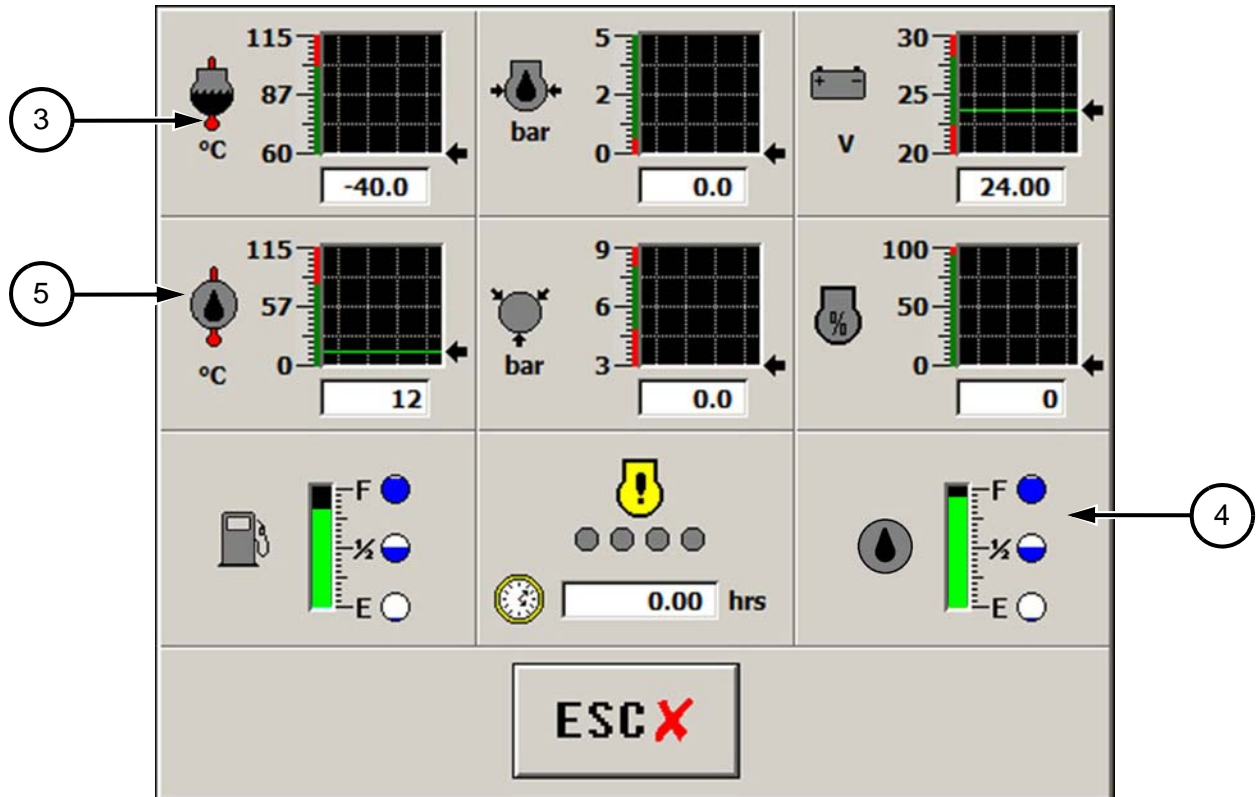
**AFTER MAIN ENGINE STARTS:**

- See Figures 1 and 2

FIGURE 1  
FRONT CAB DRIVERS CONSOLE



FIGURE 2  
ENGINE DIAGNOSTICS / FLUID LEVELS PANEL



**© 2016 HARSCO CORPORATION, ALL RIGHTS RESERVED**

415 North Main Street  
Fairmont, MN  
56031-1837  
Tel: (507) 235-3361  
Fax: (507) 235-7370

401 Edmund Road, Box 20  
Cayce-West Columbia, SC  
29171-0020  
Tel: (803) 822-9160  
Fax: (803) 822-7471

200 South Jackson Road  
Ludington, MI  
49431  
Tel: (231) 843-3431  
Fax: (231) 843-1644

Printed In USA