



www.harscorail.com

SERVICE BULLETIN

MAINTENANCE OF WAY EQUIPMENT

DATE: 7-2018

BULLETIN NO: 18-003

TITLE: Shift Permissive Kit for Durst Gearboxes

RATING:

<input type="checkbox"/>	DIRECTIVE (Action Is Required)	<input type="checkbox"/>	ALERT (Potential Problem)
<input type="checkbox"/>	INFORMATION (Action Is Optional)	<input checked="" type="checkbox"/>	PRODUCT IMPROVEMENT (Enhance Product)

PRODUCT SERIES / MODEL: 6700SJ1 and 6700SJ2 Production / Switch Tampers

SERIAL NO: 6700SJ1 and 6700 SJ2 Tampers Up to and Including S/N 153819

SUMMARY: Using sensors and software, the Shift Permissive Kit #5067850 monitors the rotation of the bull gear in the Durst Gearbox and the output shaft on the Hydraulic Drive Motor for rotation. If rotation is sensed, transmission shifting is not permitted until both sensors determine that there is no movement. In addition to the movement sensors, the kit includes a software update which provides a Jog feature. The Jog feature is used for lining up the gears for shifting in to or out of gear.

Note: Kits for BNSF Railroad will not include the Spline Sensor Pickup Install Tool # 5067838.

OPERATIONAL IMPACT: The installation of this kit will improve gearbox shifting functions which will help to reduce possible gearbox and / or drive motor damage caused by attempting to shift the gearbox while the machine is moving.

ACTION: Follow the instructions in this Service Bulletin and the attached Shift Permissive Kit #5067850 Drawing to install the kit and understand the software functions.

CONTACT: Harsco Rail Service Department
Ludington, MI Facility
(231) 843-3431

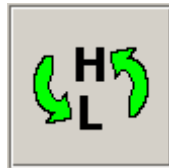
Safety Information



- **FOLLOW APPLICABLE RAILROAD LOCKOUT - TAGOUT PROCEDURES AND MACHINE ENERGY CONTROL PROCEDURE TO DISABLE ENERGY SOURCES WHEN PERFORMING MAINTENANCE, MAKING ADJUSTMENTS OR REPAIRS TO THE RAIL GRINDER. FAILURE TO HEED THIS WARNING COULD RESULT IN SEVERE BODILY INJURY.**

Shift Permissive Kit

1. Follow the instruction provided on Shift Permissive Kit #5067850 Drawing to install the kit. When installing the kit, make sure the latest Jupiter software is also installed. The latest Jupiter software is provided with the kit on a USB Flash Drive.
2. After the kit is installed, prepare the machine for operation and start the engine.
3. The only time it is permissible to shift the gearbox is if the machine is at a complete stop. On the Jupiter Main Screen, observe the Shift Enable Icon. This Icon indicates when it is permissible to shift the gearbox. The icon flashes red any time the machine is moving.
4. When the machine is at a complete stop and the gears are aligned for shifting, the Shift Enable Icon will display green arrows in a circular pattern. If the gears are not in alignment for shifting, the Shift Enable Icon will display the No Symbol.



Gear Jog Panel - See Figure 1

1. The Gear Jog Panel is displayed when the gear proximity switches do not match the expected state. When not matched, propel is not permitted to start. An error, or bad channel, will also prevent propulsion.
2. The three boxes at the top of the panel display the gear state:
 - (1) The Selected Gear By the Operator
 - (2) The Output By the Transmission Solenoids
 - (3) The Inputs Of the Gear Proximity Switches
3. Under the Output box are the values (4) for the transmission solenoids. The OUT column indicates the output is ON. The Err column indicates a bad channel.
4. Under the Input box are the values (5) for the three proximity switches, the engine tachometer, the transmission tachometer input and output. The IN column indicates that the switch is made or the tachometer is running. The Err column indicates a bad channel.
5. The Direction Arrows (6) will highlight when the machine starts moving. Various Status Flags (7) are displayed below the Direction Arrows.

Gear Jog Panel - See Figure 1

- Pressing the Jog Button (8) will begin a jog procedure to get the gears in the selected state. The Jog Button will turn red. The Shift Enable Icon will also display the Jog Icon. The Jog Icon will flash yellow and red while jogging. It will remain a steady red if a problem remains. This is the same jog function as what automatically takes place when normal shifting fails to match the proximity switches state with the transmission solenoids state.



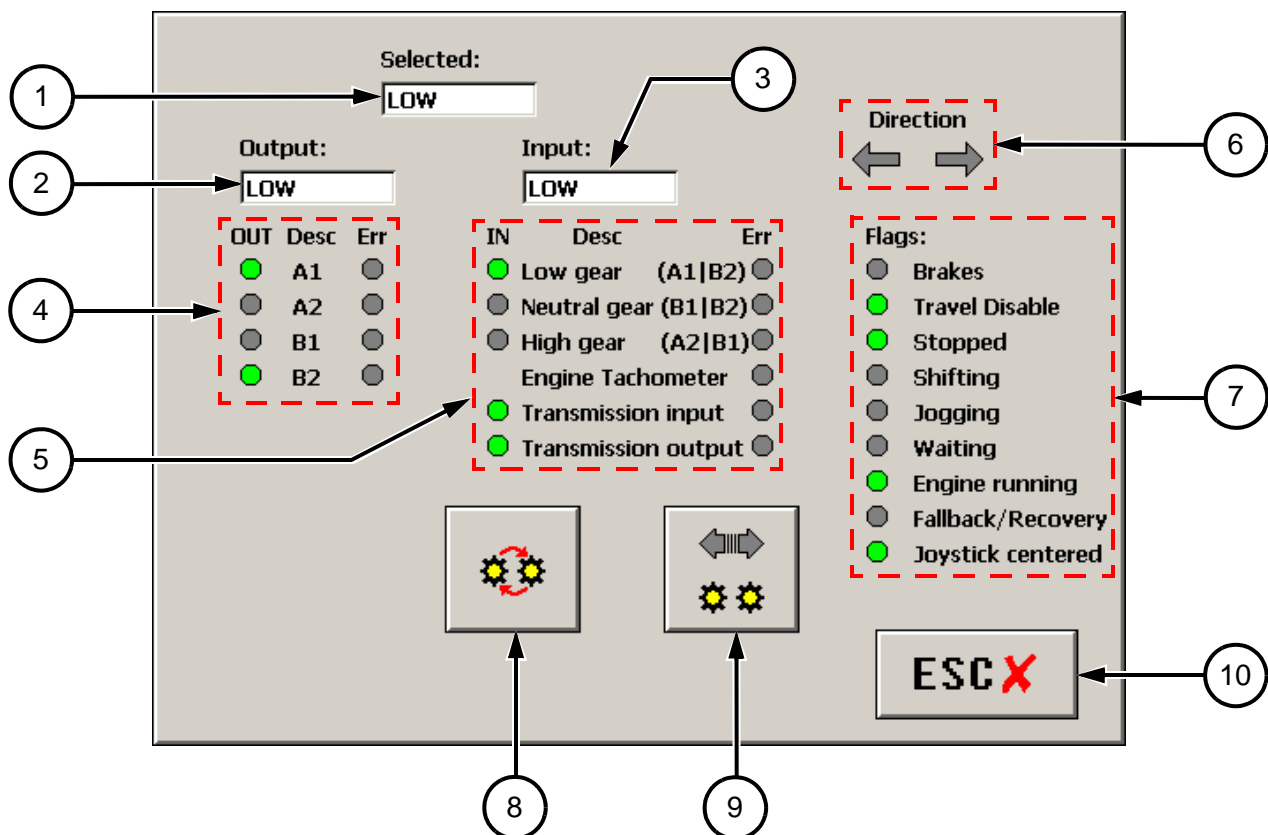
- The Jog Override Button (9) will override any out of gear sensor or error and allow propelling. The Jog Override Green Arrows will also be displayed on the Shift Enable Icon Box.

Caution: When Overriding With Gears Not Set, Damage To The Transmission May Occur.



- Press the Escape Button (10) to close this panel.

FIGURE 1
GEAR JOG PANEL



© 2018 HARSCO CORPORATION, ALL RIGHTS RESERVED

306 West 4th Street
Fairmont, MN
56031-1837
Tel: (507) 235-7376
Fax: (507) 235-7372

2401 Edmund Road, Box 20
Cayce-West Columbia, SC
29171-0020
Tel: (803) 822-9160
Fax: (803) 822-7403

200 South Jackson Road
Ludington, MI
49431
Tel: (231) 843-3431
Fax: (231) 843-1644

Printed In USA

REFERENCE DRAWINGS / SPECIAL INSTRUCTIONS

INCLUDE A COPY OF EACH OF THE FOLLOWING DRAWINGS WITH EACH KIT

DRAWING #	DESCRIPTION
5067850	CONVERSION, SPEED SENSOR
	SPECIAL INSTRUCTIONS
	TAKE ITEM 17, USB DRIVE, TO ENGINEERING FOR SOFTWARE INSTALLATION
	MARK ALL SHIPPING CONTAINERS WITH MACHINE S/N AND CUSTOMER MACHINE NUMBER

ITEM	PART NO	QTY	DESCRIPTION
1	2014365	0	DRIVE AXLE SUB-ASSEMBLY
2	5067835	1	KIT, SPEED SENSOR - DURST GEAR BOX
3	5066160	3	PROXIMITY SWITCH ASSY
4	150973-8	2	WASHER, FLAT, 5/8", HARDENED
5	A0036173	1	5/8-II X 3/4 HHCS
6	5067929	1	ADAPTER, VENT
7	F012318	1	DC-STR 4X4NPT *
8	F015219	1	DC-TEE 8X8FSX8
9	F024758	1	ADAPTER STR, 08JIC-SWX04JIC
10	4413	20	TY-RAP
11	2000991	1	HOSE ASSEMBLY
12	172057-1	1	SHIFT SEAL
13	3401326	1	CABLE,M12-M/F 3M SH 5-COND
14	2011783	1	CABLE,M12-M/SPLTR 0.6M SH 5-C
15	2011696	1	BALL PLUNGER, RAIL AXLE DRIVE
16	3401337	1	CABLE,M12-M/F 6M SH 5-COND
17	H6197Y01	1	USB FLASH DRIVE
18	5071158	1	DECAL- JOG SWITCH COVER, JUP2
19	5071163	1	DECAL- JOG SWITCH COVER, JUPI
20	5067838	1	SPLINE SENSOR PICKUP INSTALL TOOL
21	0-3040000-0-16	2	LOCTITE 242
22	F015085	1	DC-ELB90 4X4FS

NOTES:

1. REMOVE, DISASSEMBLE AND THROUGHLY CLEAN SHIFT HEX.
2. INSTALL ITEM 12, SHIFT SEAL AND RE INSTALL ONTO GEAR BOX.
3. INSTALL ITEM 15, DETENT INTO NEUTRAL SENSE LOCATION.
4. INSTALL ITEMS 3, 4, 5, 6, & 7 INTO LOCATIONS NOTED. RECONNECT EXISTING CABLES.
5. INSTALL ITEM 2, KIT, SPEED SENSOR, PER INCLUDED INSTRUCTIONS.
MUST USE INSTALLING TOOL 5067838 ITEM 20
6. ROUTE ITEM 13 (JUPITER 2) OR ITEM 16 (JUPITER 1), CABLE AS SHOWN AND TY-RAP USING ITEM 10 WHERE REQUIRED.

APPLY LOCTITE BLUE ITEM 21

CONFIRM SPEEDOMETER SPEED SENSOR IS INSTALLED CORRECTLY AND IS OPERATIONAL PER INSTRUCTIONS BELOW.
THE AIR GAP BETWEEN THE GEAR AND THE PICKUP MUST BE SET FOR .048 TO .062.
THIS CAN BE SET BY TURNING IN THE PICKUP UNTIL IT TOUCHES THE GEAR O.D.
AND THEN SCREW OUT THE PICKUP 3/4 TO 1 TURN TO OBTAIN .048 TO .062.

9. SEE SHEET 5 FOR JUPITER 1 SPECIFIC CABLING INSTRUCTIONS.
10. SEE SHEET 3 & 4 FOR JUPITER 2 SPECIFIC CABLING INSTRUCTIONS.

CONFIDENTIAL				REVISION				DR	DATE	DESCRIPTION	HARSCO RAIL
© 2017 HARSCO CORPORATION, ALL RIGHTS RESERVED. THIS DRAWING OR DOCUMENT IS THE PROPERTY OF HARSCO AND EMBODIES CONFIDENTIAL INFORMATION, TRADE SECRET INFORMATION, AND/OR KNOW-HOW THAT IS THE PROPERTY OF HARSCO. BY ACCEPTING THIS DRAWING OR DOCUMENT, THE RECIPIENT AGREES (1) NOT TO PROVIDE, OR OTHERWISE MAKE AVAILABLE, THE DRAWING OR DOCUMENT, OR ANY INFORMATION OR KNOW-HOW EMBODIED THEREIN, TO ANY THIRD PARTY AND (2) NOT TO REPRODUCE OR USE THE DRAWING OR DOCUMENT TO MANUFACTURE ANY APPARATUS OR DEVICE, WITHOUT THE PRIOR WRITTEN AUTHORIZATION OF HARSCO.				CHANGE R/L EC601548 A NEW RELEASE EC602184 B ADDED ITEM 16-21, ADDED JUP 1 CONV INSTRUCTIONS, UPDATED NOTES 6-10 SHT 1 EC602973 C CHG ITEM 7; ADDED ITEM 22	SURFACE FINISH: ALL MACHINED SURFACES WILL HAVE A SURFACE FINISH OF 125 MICROINCHES ANGULAR TOLERANCE OF ±.20° CONCENTRICITY: WITHIN .015 THIRD ANGLE PROJECTION	DR: CTR DATE: 08/18/16 DESCRIPTION: CONVERSION, SPEED SENSOR	DBB DATE: 03/21/17 WEIGHT: 11.6 lbm	MATERIAL: CROSSO DATE DRAWN: 8/17/2016 MACHINE TYPE: VARIOUS PART NUMBER: 5067850	SHEET: D OF 5: 1 of 5		

12

11

10

9

8

7

6

5

4

3

2

1

H

G

F

E

D

C

B

A

H

G

F

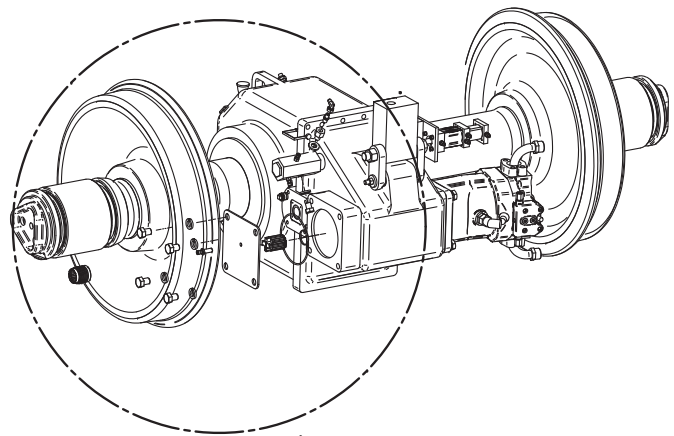
E

D

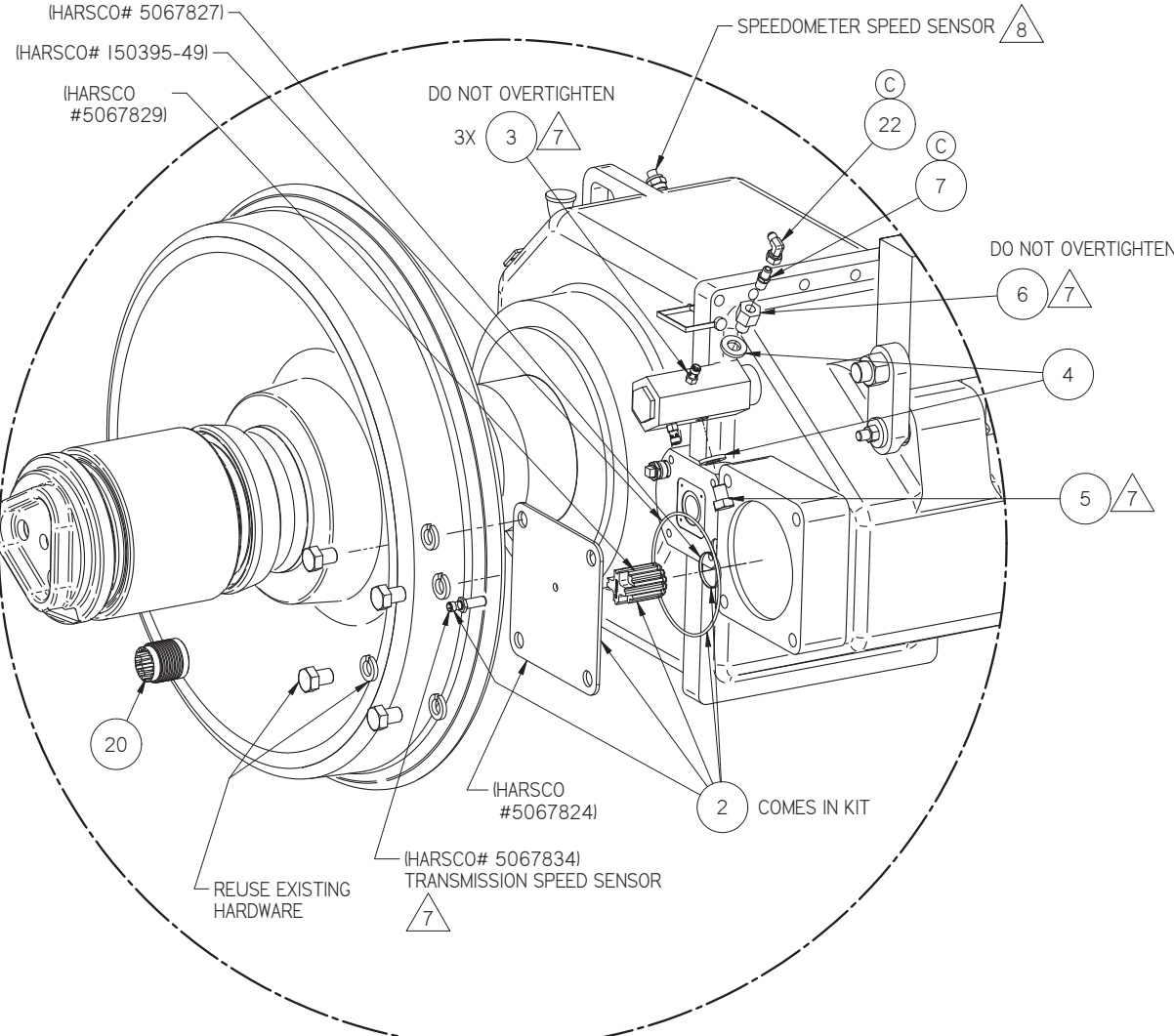
C

B

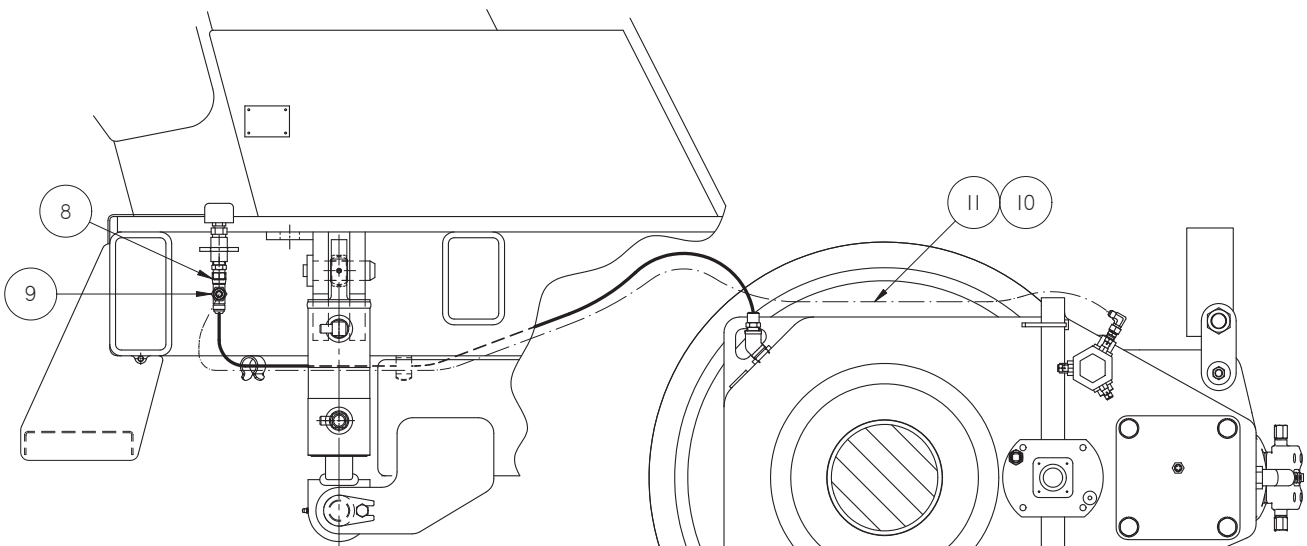
A



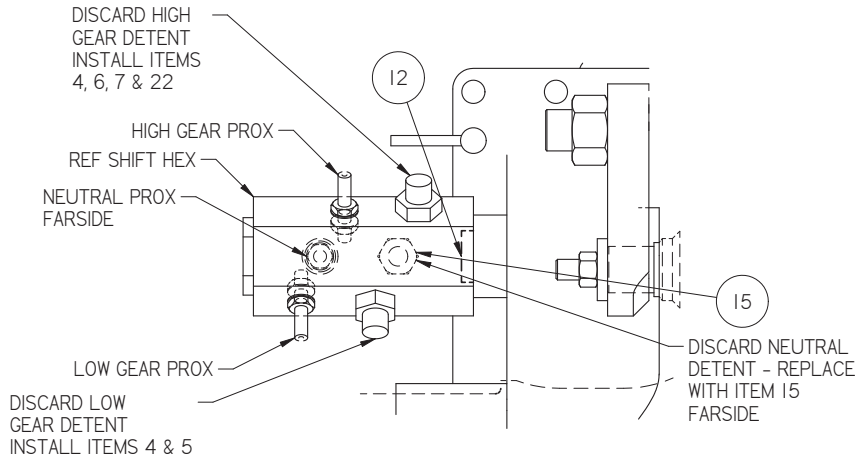
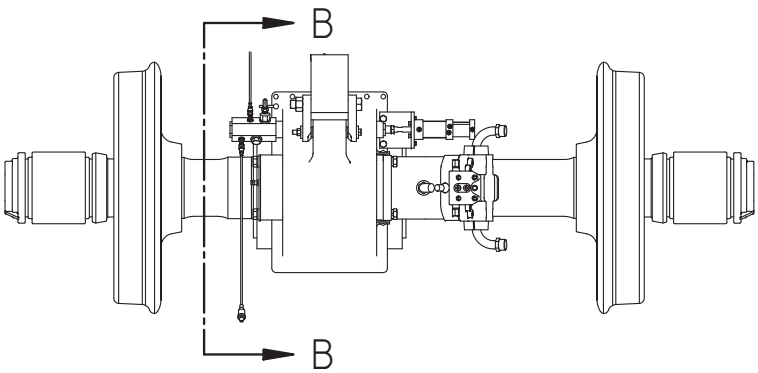
A



DETAIL A



SECTION B-B



CONFIDENTIAL
 © 2017 HARSCO CORPORATION, ALL RIGHTS RESERVED. THIS DRAWING OR DOCUMENT IS THE PROPERTY OF HARSCO AND EMBODIES CONFIDENTIAL INFORMATION, TRADE SECRET INFORMATION, AND/OR KNOW-HOW THAT IS THE PROPERTY OF HARSCO. BY ACCEPTING THIS DRAWING OR DOCUMENT, THE RECIPIENT AGREES (1) NOT TO PROVIDE, OR OTHERWISE MAKE AVAILABLE, THE DRAWING OR DOCUMENT, OR ANY INFORMATION OR KNOW-HOW EMBODIED THEREIN, TO ANY THIRD PARTY AND (2) NOT TO REPRODUCE OR USE THE DRAWING OR DOCUMENT TO MANUFACTURE ANY APPARATUS OR DEVICE, WITHOUT THE PRIOR WRITTEN AUTHORIZATION OF HARSCO.

OVER	TO	DIMS		NORMAL	TOLERANCE	METRIC	
		PLUS OR MINUS	SPACE			PLUS OR MINUS	SPACE
0	6	.03	.005	0	150	.8	.13
6	24	.04	.008	150	600	1.0	.20
24	-	.06	.010	600	-	1.5	.25

UNLESS OTHERWISE SPECIFIED ALL MACHINED SURFACES WILL HAVE:
 A SURFACE FINISH OF 125 MICROINCHES
 AN ANGULAR TOLERANCE OF ±.005"
 CONCENTRICITY WITHIN .010"
 THIRD ANGLE PROJECTION
 UNLESS OTHERWISE SPECIFIED, ALL WELDS SHOULD ADHERE TO THE MOST CURRENT A.S.M.E. WELDING STANDARDS

CHANGE	R/L	REVISION	DR	DATE	DESCRIPTION
EC601548	A	NEW RELEASE	CTR	08/18/16	CONVERSION, SPEED SENSOR
EC602184	B	ADDED ITEM 16-21, ADDED JUP 1 CONV INSTRUCTIONS, UPDATED NOTES 6-10 SHT 1	BAD	01/05/17	
EC602973	C	CHG ITEM 7; ADDED ITEM 22	DBB	03/21/17	

Weight	11.6 lbm	Drawn	crosso	DATE	8/17/2016
Material		Machine Type	VARIOUS	Part Number	5067850
SOLID EDGE DRAWING		DO NOT SCALE		Sheet	2 of 5

HARSCO
RAIL
5067850

Inch [mm]

12

11

10

9

8

7

6

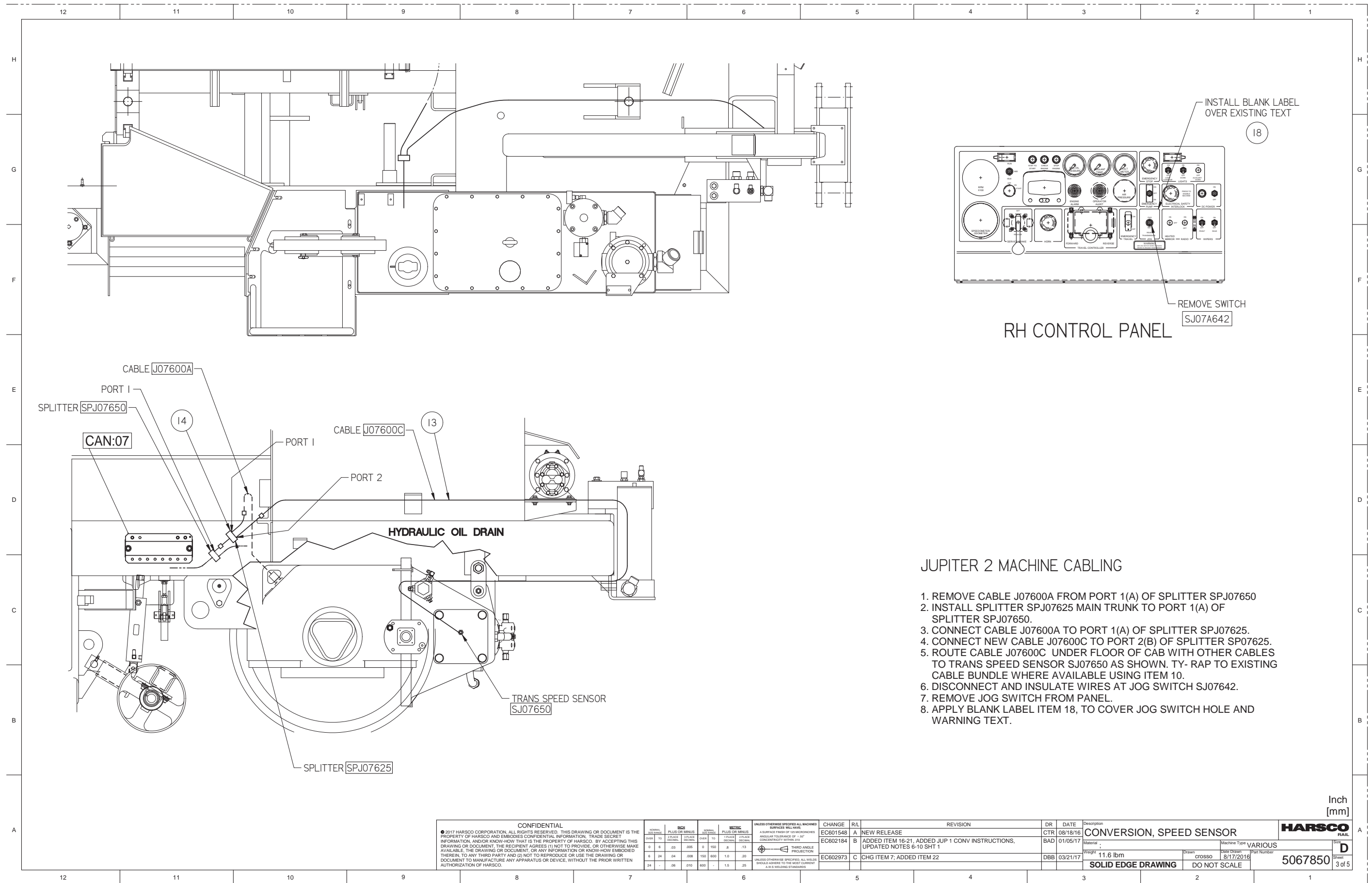
5

4

3

2

1



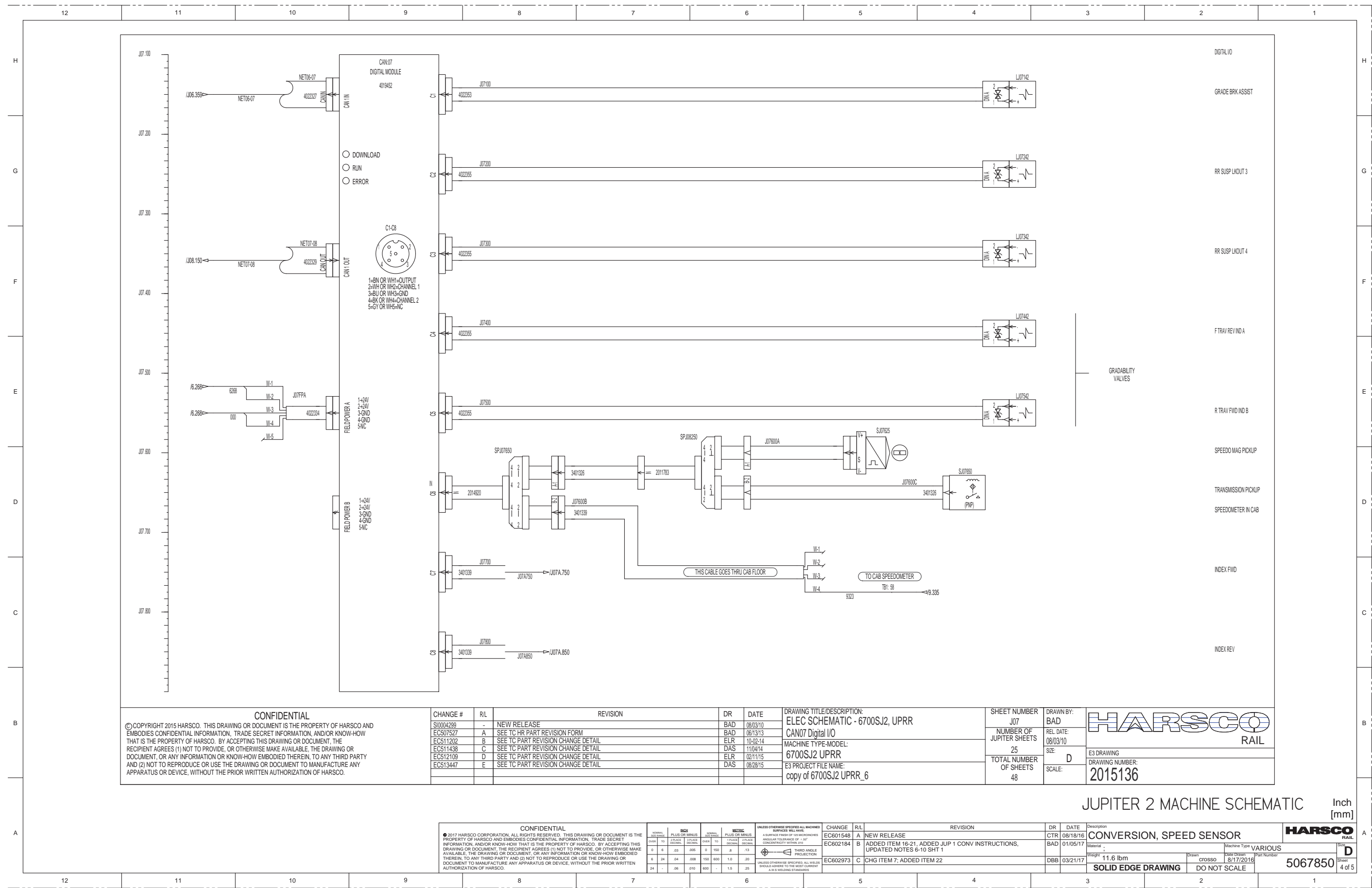
JUPITER 2 MACHINE CABLING

1. REMOVE CABLE J07600A FROM PORT 1(A) OF SPLITTER SPJ07650
2. INSTALL SPLITTER SPJ07625 MAIN TRUNK TO PORT 1(A) OF SPLITTER SPJ07650.
3. CONNECT CABLE J07600A TO PORT 1(A) OF SPLITTER SPJ07625.
4. CONNECT NEW CABLE J07600C TO PORT 2(B) OF SPLITTER SPJ07625.
5. ROUTE CABLE J07600C UNDER FLOOR OF CAB WITH OTHER CABLES TO TRANS SPEED SENSOR SJ07650 AS SHOWN. TY- RAP TO EXISTING CABLE BUNDLE WHERE AVAILABLE USING ITEM 10.
6. DISCONNECT AND INSULATE WIRES AT JOG SWITCH SJ07642.
7. REMOVE JOG SWITCH FROM PANEL.
8. APPLY BLANK LABEL ITEM 18, TO COVER JOG SWITCH HOLE AND WARNING TEXT.

<p>CONFIDENTIAL © 2017 HARSCO CORPORATION, ALL RIGHTS RESERVED. THIS DRAWING OR DOCUMENT IS THE PROPERTY OF HARSCO AND EMBODIES CONFIDENTIAL INFORMATION, TRADE SECRET INFORMATION, AND/OR KNOW-HOW THAT IS THE PROPERTY OF HARSCO. BY ACCEPTING THIS DRAWING OR DOCUMENT, THE RECIPIENT AGREES (1) NOT TO PROVIDE, OR OTHERWISE MAKE AVAILABLE, THE DRAWING OR DOCUMENT, OR ANY INFORMATION OR KNOW-HOW EMBODIED THEREIN, TO ANY THIRD PARTY AND (2) NOT TO REPRODUCE OR USE THE DRAWING OR DOCUMENT TO MANUFACTURE ANY APPARATUS OR DEVICE, WITHOUT THE PRIOR WRITTEN AUTHORIZATION OF HARSCO.</p>		<p>UNLESS OTHERWISE SPECIFIED ALL MACHINED SURFACES WILL HAVE: A SURFACE FINISH OF 125 MICROINCHES ANGULAR TOLERANCE OF ± .007 CONCENTRICITY ± 0.005 I.D. THIRD ANGLE PROJECTION UNLESS OTHERWISE SPECIFIED, ALL WELDS SHOULD ADHERE TO THE MOST CURRENT A.S.M.E. WELDING STANDARDS</p>	<table border="1"> <thead> <tr> <th>CHANG#</th> <th>R/L</th> <th>REVISION</th> <th>DR</th> <th>DATE</th> <th>Description</th> </tr> </thead> <tbody> <tr> <td>EC601548</td> <td>A</td> <td>NEW RELEASE</td> <td>CTR</td> <td>08/18/16</td> <td>CONVERSION, SPEED SENSOR</td> </tr> <tr> <td>EC602184</td> <td>B</td> <td>ADDED ITEM 16-21, ADDED JUP 1 CONV INSTRUCTIONS, UPDATED NOTES 6-10 SHT 1</td> <td>BAD</td> <td>01/05/17</td> <td></td> </tr> <tr> <td>EC602973</td> <td>C</td> <td>CHG ITEM 7; ADDED ITEM 22</td> <td>DBB</td> <td>03/21/17</td> <td></td> </tr> </tbody> </table>	CHANG#	R/L	REVISION	DR	DATE	Description	EC601548	A	NEW RELEASE	CTR	08/18/16	CONVERSION, SPEED SENSOR	EC602184	B	ADDED ITEM 16-21, ADDED JUP 1 CONV INSTRUCTIONS, UPDATED NOTES 6-10 SHT 1	BAD	01/05/17		EC602973	C	CHG ITEM 7; ADDED ITEM 22	DBB	03/21/17		<table border="1"> <tr> <td>Weight</td> <td>11.6 lbm</td> <td>Drawn</td> <td>crosso</td> <td>Scale</td> <td>8/17/2016</td> <td>Machine Type</td> <td>VARIOUS</td> <td>Part Number</td> <td>5067850</td> </tr> <tr> <td colspan="2">SOLID EDGE DRAWING</td> <td colspan="2">DO NOT SCALE</td> <td colspan="2"></td> <td colspan="2"></td> <td colspan="2">3 of 5</td> </tr> </table>	Weight	11.6 lbm	Drawn	crosso	Scale	8/17/2016	Machine Type	VARIOUS	Part Number	5067850	SOLID EDGE DRAWING		DO NOT SCALE						3 of 5	
CHANG#	R/L	REVISION	DR	DATE	Description																																											
EC601548	A	NEW RELEASE	CTR	08/18/16	CONVERSION, SPEED SENSOR																																											
EC602184	B	ADDED ITEM 16-21, ADDED JUP 1 CONV INSTRUCTIONS, UPDATED NOTES 6-10 SHT 1	BAD	01/05/17																																												
EC602973	C	CHG ITEM 7; ADDED ITEM 22	DBB	03/21/17																																												
Weight	11.6 lbm	Drawn	crosso	Scale	8/17/2016	Machine Type	VARIOUS	Part Number	5067850																																							
SOLID EDGE DRAWING		DO NOT SCALE						3 of 5																																								

Inch [mm]

HARSCO RAIL
D
 5067850



CONFIDENTIAL

© COPYRIGHT 2015 HARSCO. THIS DRAWING OR DOCUMENT IS THE PROPERTY OF HARSCO AND EMBODIES CONFIDENTIAL INFORMATION, TRADE SECRET INFORMATION, AND/OR KNOW-HOW THAT IS THE PROPERTY OF HARSCO. BY ACCEPTING THIS DRAWING OR DOCUMENT, THE RECIPIENT AGREES (1) NOT TO PROVIDE, OR OTHERWISE MAKE AVAILABLE, THE DRAWING OR DOCUMENT, OR ANY INFORMATION OR KNOW-HOW EMBODIED THEREIN, TO ANY THIRD PARTY AND (2) NOT TO REPRODUCE OR USE THE DRAWING OR DOCUMENT TO MANUFACTURE ANY APPARATUS OR DEVICE, WITHOUT THE PRIOR WRITTEN AUTHORIZATION OF HARSCO.

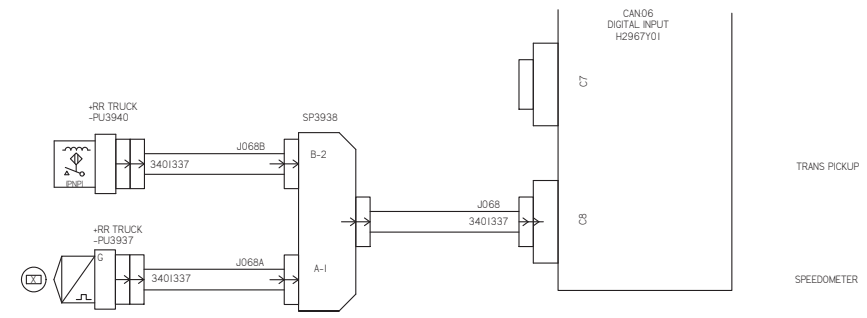
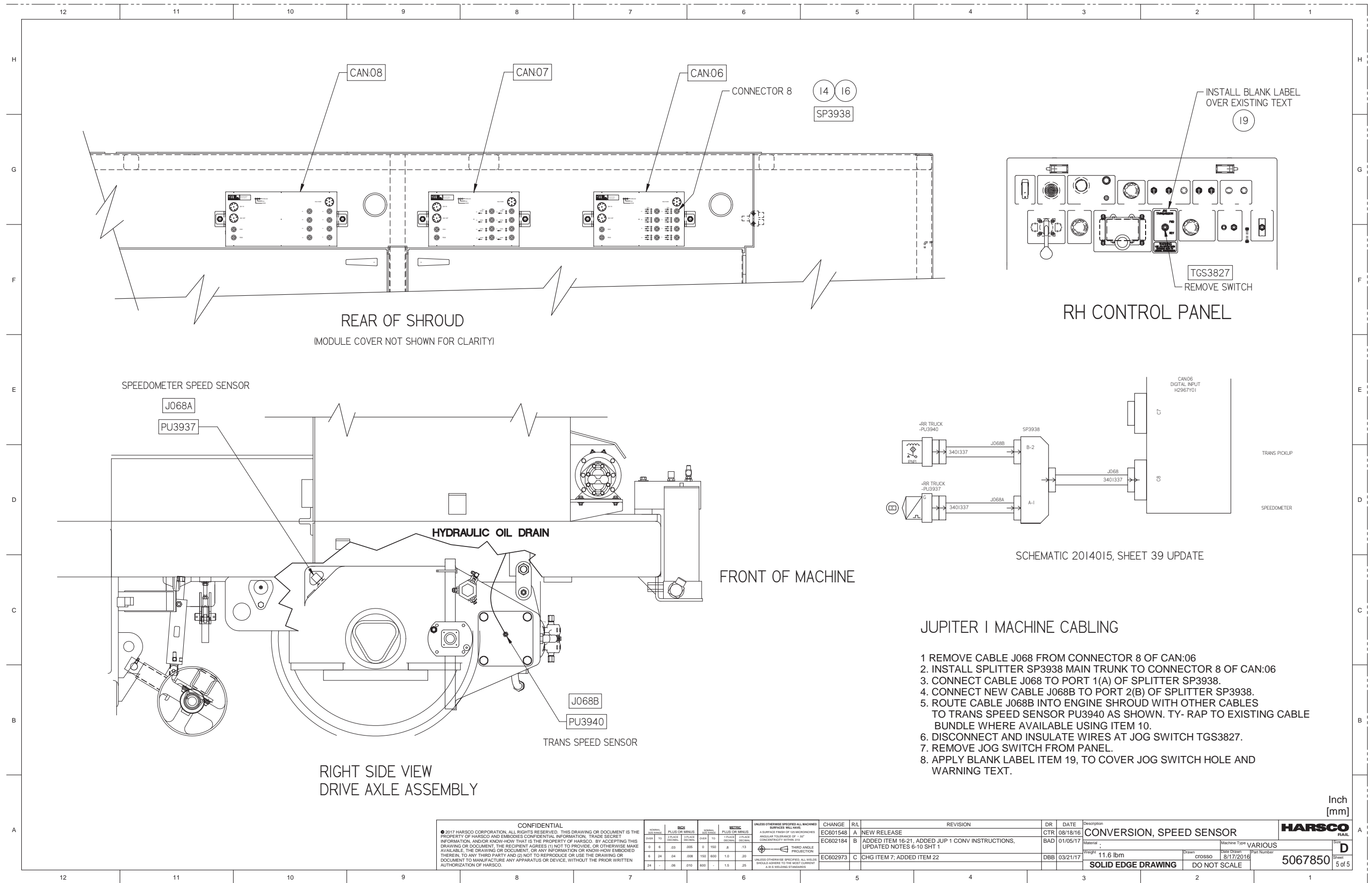
CHANGE #	REL	REVISION	DR	DATE
S10004299	-	NEW RELEASE	BAD	08/03/10
EC507527	A	SEE TC HR PART REVISION FORM	BAD	06/13/13
EC511202	B	SEE TC PART REVISION CHANGE DETAIL	ELR	10-02-14
EC511438	C	SEE TC PART REVISION CHANGE DETAIL	DAS	11/04/14
EC512109	D	SEE TC PART REVISION CHANGE DETAIL	ELR	02/11/15
EC513447	E	SEE TC PART REVISION CHANGE DETAIL	DAS	08/28/15

DRAWING TITLE/DESCRIPTION:
ELEC SCHEMATIC - 6700SJ2, UPRR
CAN07 Digital I/O
 MACHINE TYPE-MODEL:
6700SJ2 UPRR
 E3 PROJECT FILE NAME:
copy of 6700SJ2 UPRR_6

SHEET NUMBER J07	DRAWN BY: BAD	
NUMBER OF JUPTER SHEETS 25	REL DATE: 08/03/10	
TOTAL NUMBER OF SHEETS 48	SCALE: D	

JUPITER 2 MACHINE SCHEMATIC Inch [mm]

CONFIDENTIAL				REVISION				DR	DATE	Description	
<small>© 2017 HARSCO CORPORATION, ALL RIGHTS RESERVED. THIS DRAWING OR DOCUMENT IS THE PROPERTY OF HARSCO AND EMBODIES CONFIDENTIAL INFORMATION, TRADE SECRET INFORMATION, AND/OR KNOW-HOW THAT IS THE PROPERTY OF HARSCO. BY ACCEPTING THIS DRAWING OR DOCUMENT, THE RECIPIENT AGREES (1) NOT TO PROVIDE, OR OTHERWISE MAKE AVAILABLE, THE DRAWING OR DOCUMENT, OR ANY INFORMATION OR KNOW-HOW EMBODIED THEREIN, TO ANY THIRD PARTY AND (2) NOT TO REPRODUCE OR USE THE DRAWING OR DOCUMENT TO MANUFACTURE ANY APPARATUS OR DEVICE, WITHOUT THE PRIOR WRITTEN AUTHORIZATION OF HARSCO.</small>										D Sheet 4 of 5	
CHANG	REL	REVISION	DR	DATE	Description	Material	Weight	Drawn	Scale		Part Number
EC601548	A	NEW RELEASE	CTR	08/18/16	CONVERSION, SPEED SENSOR		11.6 lbm	crosso	DO NOT SCALE	5067850	
EC602184	B	ADDED ITEM 16-21, ADDED JUP 1 CONV INSTRUCTIONS, UPDATED NOTES 6-10 SHT 1	BAD	01/05/17							
EC602973	C	CHG ITEM 7; ADDED ITEM 22	DBB	03/21/17							



SCHEMATIC 2014015, SHEET 39 UPDATE

JUPITER I MACHINE CABLING

- 1 REMOVE CABLE J068 FROM CONNECTOR 8 OF CAN:06
2. INSTALL SPLITTER SP3938 MAIN TRUNK TO CONNECTOR 8 OF CAN:06
3. CONNECT CABLE J068 TO PORT 1(A) OF SPLITTER SP3938.
4. CONNECT NEW CABLE J068B TO PORT 2(B) OF SPLITTER SP3938.
5. ROUTE CABLE J068B INTO ENGINE SHROUD WITH OTHER CABLES TO TRANS SPEED SENSOR PU3940 AS SHOWN. TY- RAP TO EXISTING CABLE BUNDLE WHERE AVAILABLE USING ITEM 10.
6. DISCONNECT AND INSULATE WIRES AT JOG SWITCH TGS3827.
7. REMOVE JOG SWITCH FROM PANEL.
8. APPLY BLANK LABEL ITEM 19, TO COVER JOG SWITCH HOLE AND WARNING TEXT.

<p>CONFIDENTIAL © 2017 HARSCO CORPORATION, ALL RIGHTS RESERVED. THIS DRAWING OR DOCUMENT IS THE PROPERTY OF HARSCO AND EMBODIES CONFIDENTIAL INFORMATION, TRADE SECRET INFORMATION, AND/OR KNOW-HOW THAT IS THE PROPERTY OF HARSCO. BY ACCEPTING THIS DRAWING OR DOCUMENT, THE RECIPIENT AGREES (1) NOT TO PROVIDE, OR OTHERWISE MAKE AVAILABLE, THE DRAWING OR DOCUMENT, OR ANY INFORMATION OR KNOW-HOW EMBODIED THEREIN, TO ANY THIRD PARTY AND (2) NOT TO REPRODUCE OR USE THE DRAWING OR DOCUMENT TO MANUFACTURE ANY APPARATUS OR DEVICE, WITHOUT THE PRIOR WRITTEN AUTHORIZATION OF HARSCO.</p>		<p>UNLESS OTHERWISE SPECIFIED ALL DIMENSIONS SHALL BE IN INCHES AND DECIMALS THEREOF. ANGULAR TOLERANCE OF ±.50° UNLESS OTHERWISE SPECIFIED. ALL DIMENSIONS SHALL BE TO THE MOST CURRENT A.S.M.E. WELDING STANDARDS.</p>	<p>THIRD ANGLE PROJECTION</p>	<table border="1"> <thead> <tr> <th>REV</th> <th>DATE</th> <th>DESCRIPTION</th> </tr> </thead> <tbody> <tr> <td>EC601548</td> <td>08/18/16</td> <td>NEW RELEASE</td> </tr> <tr> <td>EC602184</td> <td>01/05/17</td> <td>ADDED ITEM 16-21, ADDED JUP I CONV INSTRUCTIONS, UPDATED NOTES 6-10 SHT 1</td> </tr> <tr> <td>EC602973</td> <td>03/21/17</td> <td>CHG ITEM 7; ADDED ITEM 22</td> </tr> </tbody> </table>	REV	DATE	DESCRIPTION	EC601548	08/18/16	NEW RELEASE	EC602184	01/05/17	ADDED ITEM 16-21, ADDED JUP I CONV INSTRUCTIONS, UPDATED NOTES 6-10 SHT 1	EC602973	03/21/17	CHG ITEM 7; ADDED ITEM 22	<table border="1"> <thead> <tr> <th>REV</th> <th>DATE</th> <th>DESCRIPTION</th> </tr> </thead> <tbody> <tr> <td>CTR</td> <td>08/18/16</td> <td>CONVERSION, SPEED SENSOR</td> </tr> <tr> <td>BAD</td> <td>01/05/17</td> <td></td> </tr> <tr> <td>DBB</td> <td>03/21/17</td> <td></td> </tr> </tbody> </table>	REV	DATE	DESCRIPTION	CTR	08/18/16	CONVERSION, SPEED SENSOR	BAD	01/05/17		DBB	03/21/17		<p>Material: 11.6 lbm Weight: 11.6 lbm Solid Edge Drawing DO NOT SCALE</p>	<p>Machine Type: VARIOUS Part Number: 5067850 Sheet: 5 of 5</p>	<p>Inch [mm]</p> <p>HARSCO RAIL</p>
REV	DATE	DESCRIPTION																														
EC601548	08/18/16	NEW RELEASE																														
EC602184	01/05/17	ADDED ITEM 16-21, ADDED JUP I CONV INSTRUCTIONS, UPDATED NOTES 6-10 SHT 1																														
EC602973	03/21/17	CHG ITEM 7; ADDED ITEM 22																														
REV	DATE	DESCRIPTION																														
CTR	08/18/16	CONVERSION, SPEED SENSOR																														
BAD	01/05/17																															
DBB	03/21/17																															