
SERVICE BULLETIN

MAINTENANCE OF WAY EQUIPMENT

DATE: 1-2020

BULLETIN NO: 20-001

TITLE: Squeeze Flow Control Valve Orientation Clarification

RATING:

<input type="checkbox"/>	DIRECTIVE (Action Is Required)	<input checked="" type="checkbox"/>	ALERT (Potential Problem)
<input type="checkbox"/>	INFORMATION (Action Is Optional)	<input type="checkbox"/>	PRODUCT IMPROVEMENT (Enhance Product)

PRODUCT SERIES / MODEL: Mark IV Tampers

SERIAL NO: N/A

SUMMARY: Harsco Rail has become aware that some Mark IV Tampers are experiencing squeeze in and out speed issues or premature failure of the Squeeze Flow Control Valves, Harsco Rail # 0-3335018-0-02. This problem is happening if the flow control valve is installed in the "Meter Out" orientation instead of the "Meter In" orientation. Refer to the illustrations in this Service Bulletin to determine if your flow control valve is orientated in the correct "Meter In" position.

OPERATIONAL IMPACT: If the Squeeze Flow Control Valve is not assembled correctly, squeeze in and out speed may be affected or complete failure of the Squeeze Flow Control Valve, Harsco Rail # 0-3335018-0-02, is possible under certain machine conditions.

ACTION: Follow the instructions in this Service Bulletin to inspect the Squeeze Flow Control Valve orientation and correct it if assembled incorrectly.

CONTACT: Harsco Rail Service Department
(803) 822-7546

Harsco Rail Parts Department
(800) 800-6410

SAFETY INFORMATION

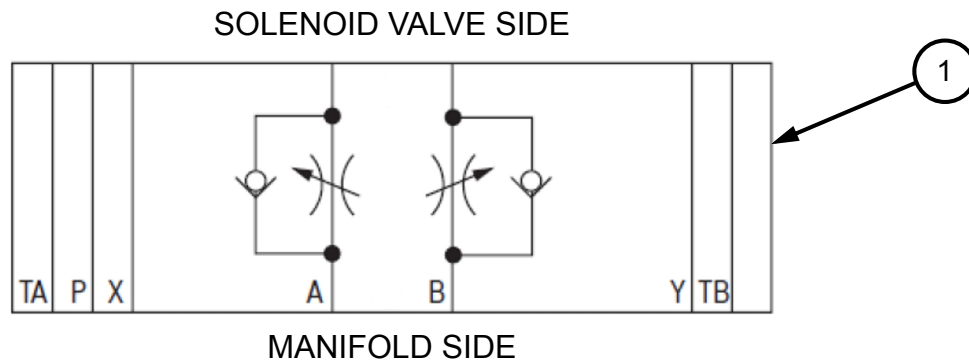


- FOLLOW APPLICABLE RAILROAD LOCKOUT - TAGOUT PROCEDURES AND MACHINE ENERGY CONTROL PROCEDURE TO DISABLE ENERGY SOURCES WHEN PERFORMING MAINTENANCE, MAKING ADJUSTMENTS OR REPAIRS TO THE MACHINE. FAILURE TO HEED THIS WARNING COULD RESULT IN SEVERE BODILY INJURY.

Squeeze Flow Control Valve Orientation - See Figures 1, and 2

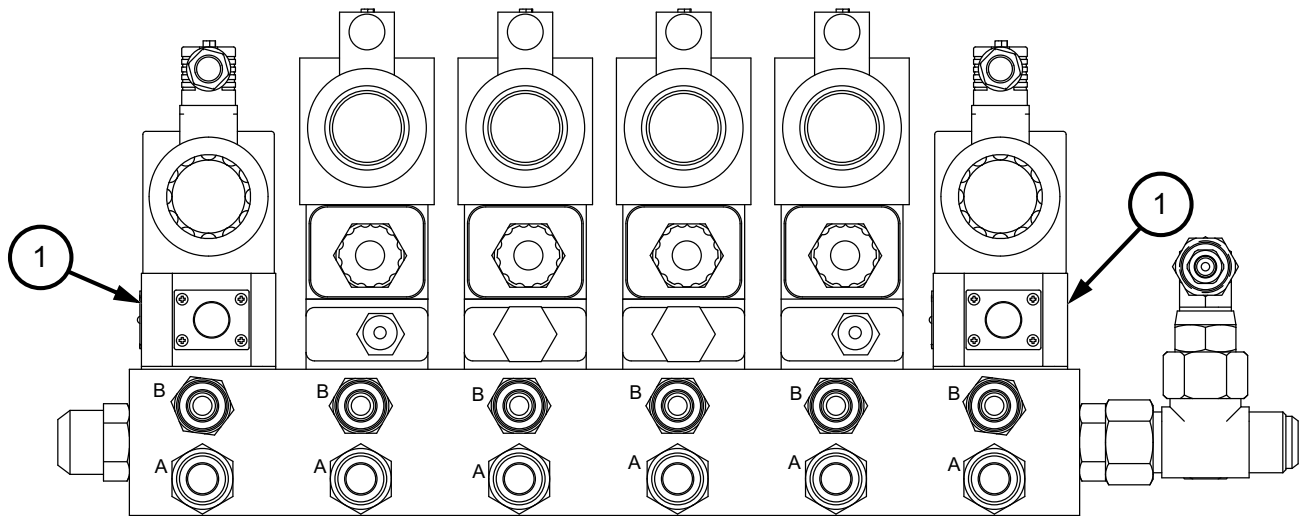
1. Make sure all machine work components are in the stored position and locks are engaged.
2. Make sure the machine is shut down, parking brakes are applied and battery switch is turned off.
3. Inspect the two Squeeze Flow Control Valves (1) on the Workhead Valve Assembly. Check the markings on the valves to ensure the valves are installed in the "Meter In" orientation.
4. If both flow control valves are installed correctly, no further action is required. If one or both flow control valves are installed in the "Meter Out" orientation, the valves will need to be flipped top to bottom.
5. Before disassembly of the Workhead Valve Assembly, make sure all hydraulic pressure is released from the system. Place a drain pan under the assembly to catch hydraulic fluid.
6. Disassemble the Squeeze Valve Stack. Flip the Flow Control Valve (1) top to bottom. Assemble the Squeeze Valve Stack. Torque the socket head cap screws to 11 lb-ft (14.9 N-m)
7. Operate the machine to ensure the squeeze function works correctly.

FIGURE-1
FLOW CONTROL VALVE SCHEMATIC - METER IN

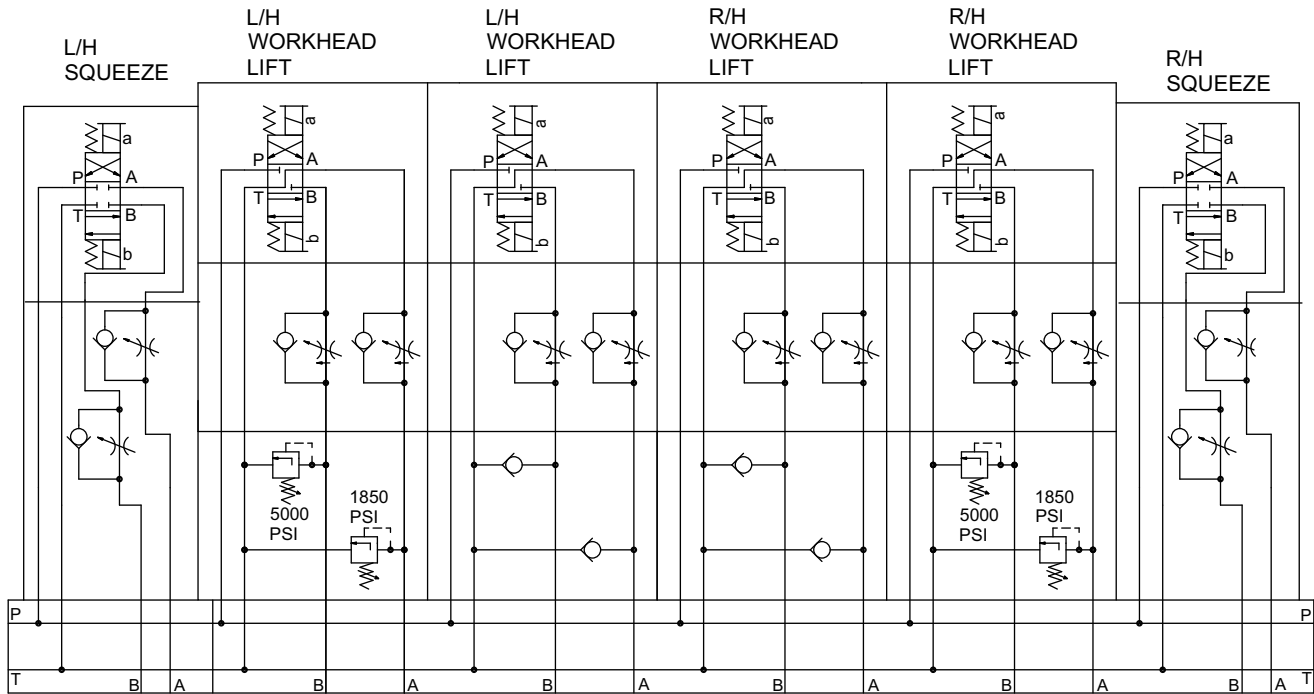


Squeeze Flow Control Valve Orientation

**FIGURE-2
WORKHEAD VALVE ASSEMBLY**



VALVE ASSEMBLY SCHEMATIC



© 2020 HARSCO CORPORATION, ALL RIGHTS RESERVED

306 West 4th Street
Fairmont, MN
56031-1837
Tel: (507) 235-7376
Fax: (507) 235-7372

2401 Edmund Road, Box 20
Cayce-West Columbia, SC
29171-0020
Tel: (803) 822-9160
Fax: (803) 822-7403

200 South Jackson Road
Ludington, MI
49431
Tel: (231) 843-3431
Fax: (231) 843-1644

Printed In USA