
SERVICE BULLETIN

MAINTENANCE OF WAY EQUIPMENT

DATE: 4-2020

BULLETIN NO: 20-003

TITLE: Transmission Support Strap Conversion Kit

RATING:

DIRECTIVE
(Action Is Required)

ALERT
(Potential Problem)

INFORMATION
(Action Is Optional)

PRODUCT IMPROVEMENT
(Enhance Product)

PRODUCT SERIES / MODEL: 6700SJ2 Production / Switch Tampers with Durst or Cushman Drive Transmissions

SERIAL NO: N/A

SUMMARY: Harsco Rail is offering a Transmission Support Strap Conversion Kit for 6700SJ2 Production / Switch Tampers with Durst or Cushman Drive Transmissions. When installed, the components in this kit will provide a safety feature to help support the transmission in the event the torque lug bolts work loose or fail. Follow the instructions in this Service Bulletin to install the Transmission Support Strap Conversion Kit #5110030.

OPERATIONAL IMPACT: None

ACTION: Order one Transmission Support Strap Conversion Kit #5110030 for each transmission that is being reworked. Follow the instructions in this Service Bulletin and refer to the attached drawing #5110030 to install the Kit.

CONTACT: Harsco Rail Service Department
(803) 822-7546

Harsco Rail Parts Department
(800) 800-6410

SAFETY INFORMATION



- FOLLOW APPLICABLE RAILROAD LOCKOUT - TAGOUT PROCEDURES AND MACHINE ENERGY CONTROL PROCEDURE TO DISABLE ENERGY SOURCES WHEN PERFORMING MAINTENANCE, MAKING ADJUSTMENTS OR REPAIRS TO THE MACHINE. FAILURE TO HEED THIS WARNING COULD RESULT IN SEVERE BODILY INJURY.

Before Installing Transmission Support Strap Conversion Kit

1. Make sure all machine work components are in the stored position and locks are engaged.
2. Make sure the machine is shut down, parking brakes are applied and battery switch is turned off. Chock the machine wheels.
3. Order one Transmission Support Strap Conversion Kit #5110030 for each transmission that is being reworked.

ITEM	PART NO	DESCRIPTION	QTY
	5110030	TRANSMISSION SUPPORT STRAP CONVERSION KIT	1
1	5109996	Wire Rope Sling, .31 DIA x 24" Long	2
2	5110029	Transmission Hanger Weldment	1
3	F022173	Hex Head Cap Screw, 3/4-10 x 2"	4
4	A0061024	Washer, Lock, 3/4", Heavy	4
5	150973-13	Flat Washer, 1-1/4", Hardened	4
6	1444	Cotter Pin .156 X 2"	4
7	5109943	Transmission Cable Hanger Bracket	1
8	172582-1	O-Ring	1

Installing Transmission Support Strap Conversion Kit

1. Remove existing cover plate located on the opposite side of the transmission from the hydraulic drive motor.
2. Install Transmission Hanger Weldment plate (2) and new O-Ring (8) being careful not to damage the O-Ring. Secure with four new fasteners (3) and (4).
3. Position Transmission Cable Hanger Bracket (7) on the frame as shown and weld in place. Refer to dimensions and weld symbols on the drawing.
4. Position the two Wire Rope Slings (1) over the pins on Transmission Hanger Weldment (2) and Transmission Cable Hanger Bracket (7). Secure the slings to the pins using four Flat Washers (5) and Cotter Pins (6).

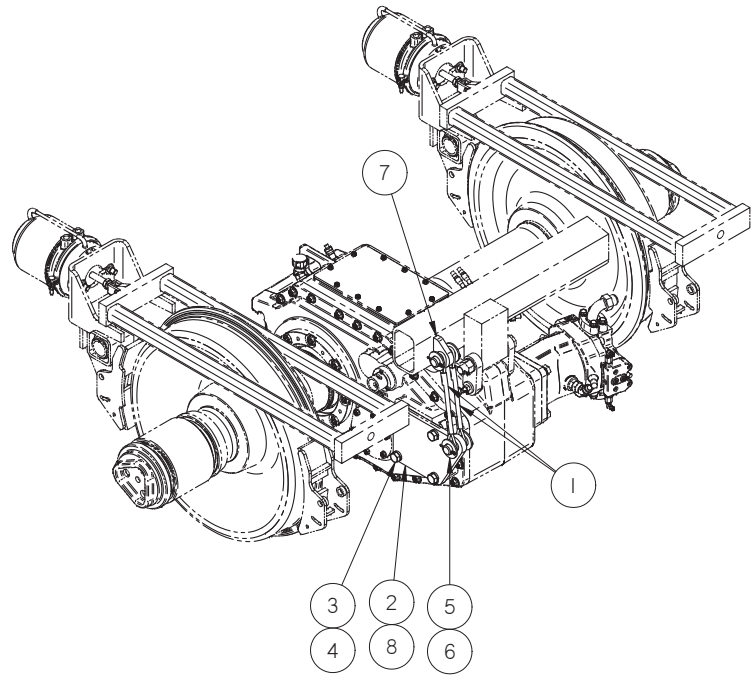
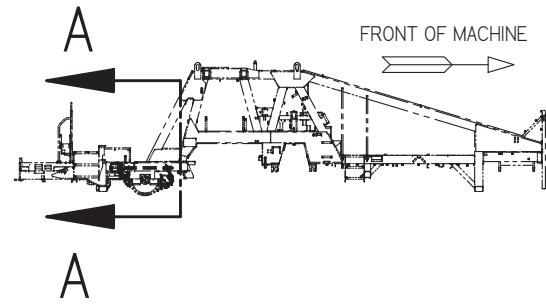
© 2020 HARSCO CORPORATION, ALL RIGHTS RESERVED

306 West 4th Street
 Fairmont, MN
 56031-1837
 Tel: (507) 235-7376
 Fax: (507) 235-7372

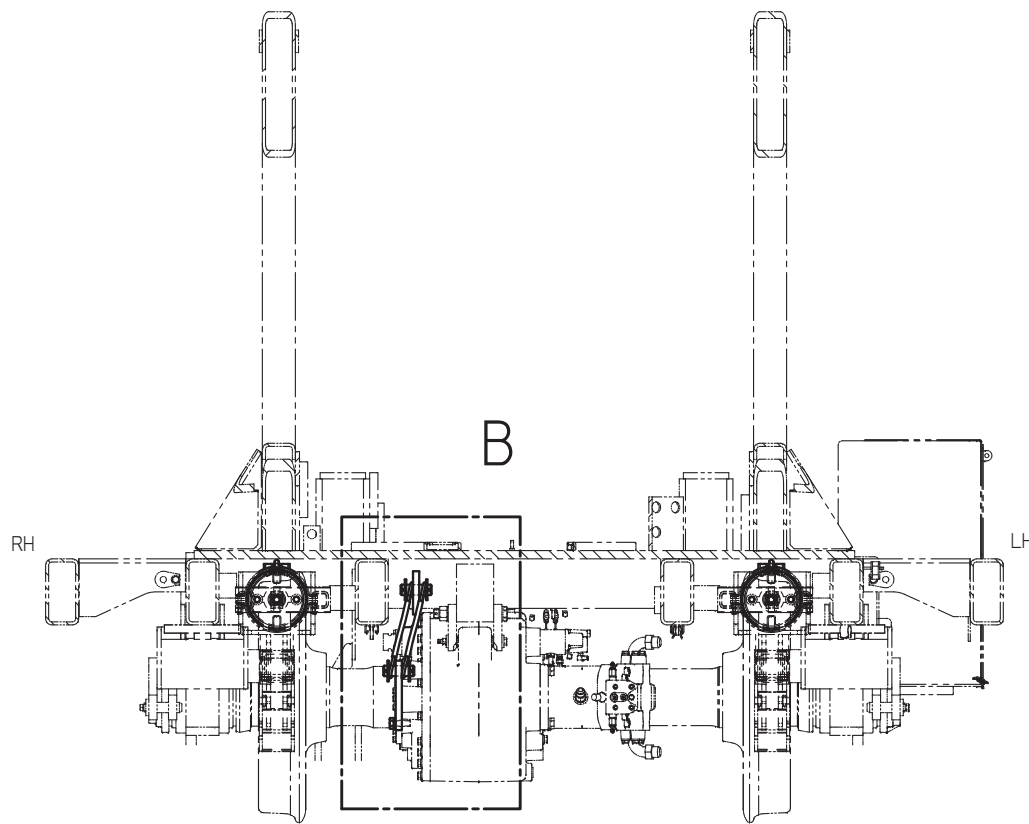
2401 Edmund Road, Box 20
 Cayce-West Columbia, SC
 29171-0020
 Tel: (803) 822-9160
 Fax: (803) 822-7403

200 South Jackson Road
 Ludington, MI
 49431
 Tel: (231) 843-3431
 Fax: (231) 843-1644

Printed In USA

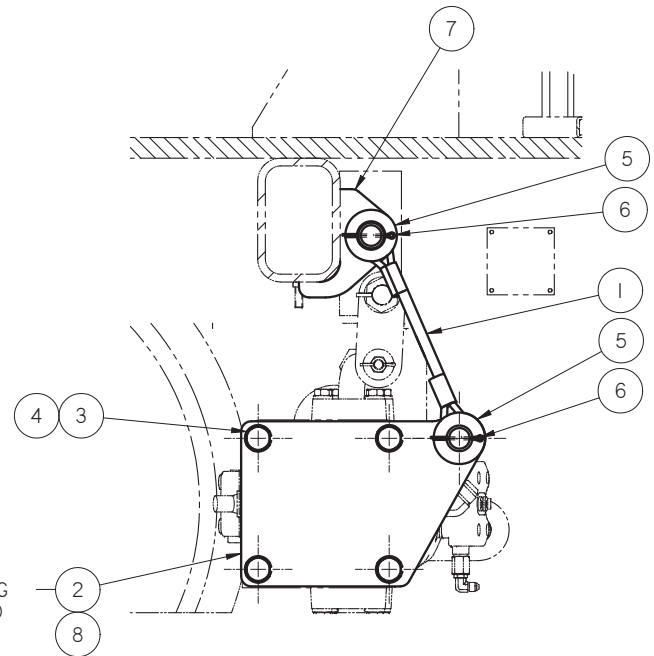


ITEM	PART NO	QTY	DESCRIPTION
1	5109996	2	WIRE ROPE SLING, .31 DIA X 24LG
2	5110029	1	TRANSMISSION HANGER WELDMENT
3	F022173	4	3/4-10UNC-2A X 2 HHCS
4	A0061024	4	WASHER, LOCK, 3/4", HEAVY, YZP
5	150973-13	4	WASHER, FLAT, 1-1/4", HARDENED
6	1444	4	COTTER PIN .156 X 2.00
7	5109943	1	BRACKET, TRANS CABLE HANGER
8	172582-1	1	O-RING



SECTION A-A

SIMILAR TO 5109995

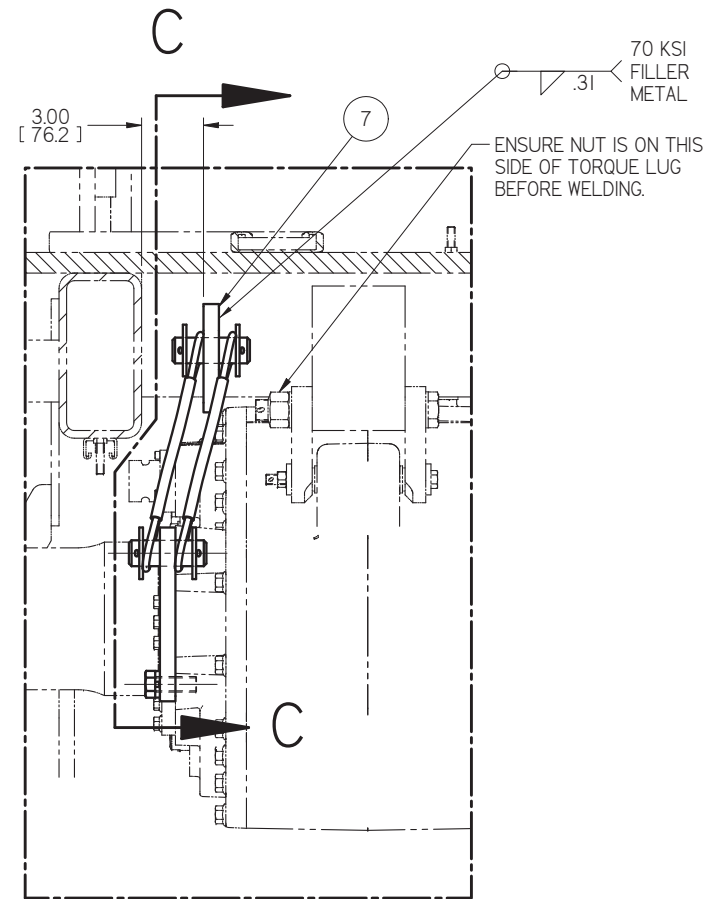


SECTION C-C

REMOVE EXISTING COVER (THIS END ONLY), AND USE ITEM 2 AS A REPLACEMENT.

CAREFULLY HANDLE TO AVOID DAMAGING NEW O-RING SEAL.

FOR SERVICE USE #172582-1 O-RING.



DETAIL B

70 KSI FILLER METAL

ENSURE NUT IS ON THIS SIDE OF TORQUE LUG BEFORE WELDING.

<p>CONFIDENTIAL</p> <p>COPYRIGHT 2020 HARSCO CORPORATION. ALL RIGHTS RESERVED. THIS DRAWING OR DOCUMENT IS THE PROPERTY OF HARSCO AND EMBODIES CONFIDENTIAL INFORMATION, TRADE SECRET INFORMATION, AND/OR KNOW-HOW THAT IS THE PROPERTY OF HARSCO. BY ACCEPTING THIS DRAWING OR DOCUMENT, THE RECIPIENT AGREES (1) NOT TO PROVIDE, OR OTHERWISE MAKE AVAILABLE, THE DRAWING OR DOCUMENT, OR ANY INFORMATION OR KNOW-HOW EMBODIED THEREIN, TO ANY THIRD PARTY AND (2) NOT TO REPRODUCE OR USE THE DRAWING OR DOCUMENT TO MANUFACTURE ANY APPARATUS OR DEVICE, WITHOUT THE PRIOR WRITTEN AUTHORIZATION OF HARSCO.</p>		<table border="1"> <thead> <tr> <th>REV</th> <th>DATE</th> <th>DESCRIPTION</th> </tr> </thead> <tbody> <tr> <td>0</td> <td>06</td> <td>03</td> <td>005</td> <td>0</td> <td>150</td> <td>.8</td> <td>.13</td> </tr> <tr> <td>6</td> <td>24</td> <td>.04</td> <td>008</td> <td>150</td> <td>600</td> <td>1.0</td> <td>.20</td> </tr> <tr> <td>24</td> <td>-</td> <td>.06</td> <td>010</td> <td>600</td> <td>-</td> <td>1.5</td> <td>.25</td> </tr> </tbody> </table>	REV	DATE	DESCRIPTION	0	06	03	005	0	150	.8	.13	6	24	.04	008	150	600	1.0	.20	24	-	.06	010	600	-	1.5	.25	<p>UNLESS OTHERWISE SPECIFIED:</p> <p>1. REMOVE EXISTING COVER (THIS END ONLY) AND USE ITEM 2 AS A REPLACEMENT.</p> <p>2. CAREFULLY HANDLE TO AVOID DAMAGING NEW O-RING SEAL.</p> <p>3. TORQUE ALL FASTENERS PER STD-1850</p> <p>4. TORQUE ALL PARTS PER STD-1850</p> <p>5. THIRD ANGLE PROJECTION</p> <p>6. DRAWN PER HARSCO S&E STANDARD STD-1851D</p>	<table border="1"> <thead> <tr> <th>CHANGE</th> <th>R/L</th> <th>REVISION</th> </tr> </thead> <tbody> <tr> <td>EC611990</td> <td>A</td> <td>NEW RELEASE</td> </tr> </tbody> </table>	CHANGE	R/L	REVISION	EC611990	A	NEW RELEASE	<table border="1"> <thead> <tr> <th>DR</th> <th>DATE</th> <th>DESCRIPTION</th> </tr> </thead> <tbody> <tr> <td>RSC</td> <td>01/21/20</td> <td>CONVERSION, TRANS SUPPRT STRAP</td> </tr> </tbody> </table>	DR	DATE	DESCRIPTION	RSC	01/21/20	CONVERSION, TRANS SUPPRT STRAP	<p>Weight: 24.8 lbm</p> <p>Drawn: nbajuri</p> <p>Date Drawn: 1/2/2020</p> <p>SOLID EDGE DRAWING DO NOT SCALE</p>	<p>Machine Type: 6700S-J2</p> <p>Part Number: 5110030</p> <p>Sheet: 1 of 1</p>	<p>Inch [mm]</p> <p>HARSCO</p>
REV	DATE	DESCRIPTION																																													
0	06	03	005	0	150	.8	.13																																								
6	24	.04	008	150	600	1.0	.20																																								
24	-	.06	010	600	-	1.5	.25																																								
CHANGE	R/L	REVISION																																													
EC611990	A	NEW RELEASE																																													
DR	DATE	DESCRIPTION																																													
RSC	01/21/20	CONVERSION, TRANS SUPPRT STRAP																																													