
SERVICE BULLETIN

MAINTENANCE OF WAY EQUIPMENT

DATE: 09 - 2021

BULLETIN NO: 21-005B

TITLE: BUGGY DERAIL ALARM KIT - MARK IV

RATING:

<input type="checkbox"/>	DIRECTIVE (Action Is Required)	<input type="checkbox"/>	ALERT (Potential Problem)
<input type="checkbox"/>	INFORMATION (Action Is Optional)	<input checked="" type="checkbox"/>	PRODUCT IMPROVEMENT (Enhance Product)

PRODUCT SERIES / MODEL: Mark IV Production / Switch Tampers with Jupiter II

SERIAL NO: N/A

SUMMARY: Harsco Rail has developed a Derail Alarm Kit to detect and prevent derailment of the projector light buggy. It provides audible and visual notifications to the operator and has the ability to automatically reduce power and apply the brakes. Field installation takes approximately 3 hours and utilizes a wireless transmitter so no wires need to be run through the pusher bars.

OPERATIONAL IMPACT:

A projector buggy not equipped with the alarm kit may result in a derailment, which can cause damage to the machine and track structure and possible personal injury to the operator.

ACTION: Order one Buggy Derail Alarm Kit-Mark IV assembly kit (Harsco Rail part number 5122545) for each machine being reworked. Follow the instructions in this Service Bulletin to assemble and install the kit components onto the projector buggy. Refer to the supplied Harsco Rail drawing 5122545 - Buggy Derail Alarm Kit-Mark IV, when installing the kit onto the projector buggy.

CONTACT: Harsco Rail Service Department
(803) 822-7546

Harsco Rail Parts Department
(800) 800-6410

SAFETY INFORMATION



- Follow applicable railroad lockout - tagout procedures to disable energy sources when performing maintenance, making adjustments or repairs to the vehicle or equipment. Failure to heed this warning could result in severe bodily injury.

Before Installing Buggy Derail Alarm Kit

1. Make sure all machine work components are in the stored position and locks are engaged.
2. Make sure the machine is shut down, parking brakes are applied, battery switch is turned off and the machine wheels are chocked.
3. Order one Buggy Derail Alarm Kit-Mark IV #5122545 for each machine.

ITEM	PART NO	DESCRIPTION	QTY
	5122545	Buggy Derail Alarm Kit - Mark IV	1
1	5122546	Sensor Mounting Assembly	2
2	5122628	Bracket, Projector Buggy	2
3	L426262	1/2-20 Locknut	4
4	202063	Washer, Flat, 1/2", Hardened	4
5	F002734	Hex Cap Scr 1/4-20x2 3/4 Gr5.	4
6	F004606	1/4-20 Elastic Stop Nut	8
7	F002355	HHD Cap Scr 1/4-20x3/4 Gr4	8
8	F001106	Washer, Flat, 1/4", USS, ZP.	8
9	5122549	Bracket, Tube	2
10	5016794	Enclosure Brkt	1
11	5125089	Enclosure, Derail Kit.	1
12	155421-1	Connector, Sq., 90 Deg .50, Grip .37-50	1
13	F019878	Locknut 1/2NPT Elec Fitg	1
14	3401326	Cable, M12-M/F 3M SH 5-Cond.	2
15	F018229	Ty-Rap	16
16	5122654	Front Cover, Projector Buggy.	0
17	5123375	Front Cover, Projector Buggy RH.	0
18	5127041	Buggy Derail Alarm Software	1
19	F011626	10-24 x 3/4 Skt Hd Cs	4
20	F009542	Nut, Hex, #10-24, Gd2, Zp.	4

Install 5125089- Enclosure, Derail Kit (Formed Plate-Style Buggy Frame)

1. Remove existing Distribution J-Box Assembly (Harsco Rail 5034556) from projector buggy assembly. Save the fasteners for re-installation later.
2. Drill four Ø .28 holes in the existing 5016794 - Enclosure Brkt - as shown in Harsco Rail drawing 5122545 (Sheet 2 - Section D-D).
3. Re-install the previously removed Distribution J-Box Assembly (Harsco Rail 5034556) to projector buggy frame using the original fasteners.
4. Secure the new (Item 10) 5016794 - Enclosure Brkt, onto the other side of the existing 5016794 - Enclosure Brkt with four new fasteners; (Item 6) F004606 1/4-20 Elastic Stop Nut, (Item 7) F002355 HHD Cap Scr 1/4-20x3/4 GR4, and (Item 8) F001106 Washer, Flat, 1/4", USS, ZP, - as shown in Harsco Rail drawing 5122545 (Sheet 2 - Section D-D).
5. Secure new (Item 11) 5125089 - Enclosure, Derail Kit onto new (Item 10) 5016794 - Enclosure Brkt, with four new fasteners; (Item 6) F004606 1/4-20 Elastic Stop Nut, (Item 7) F002355 HHD Cap Scr 1/4-20x3/4 GR4, and (Item 8) F001106 Washer, Flat, 1/4", USS, ZP, - as shown in Harsco Rail drawing 5122545 (Sheet 2 - Section D-D).

Install 5122546 - Sensor Mounting Assembly (Formed Plate-Style Buggy Frame)

(For machines without Solar Laser Liner Projector)

1. Remove existing Male Rod End Nut and install (Item 2) 5122628 - Bracket, Projector Buggy and secure with two each (Item 3) L426262 1/2-20 Locknut and (Item 4) Washer, Flat, 1/2", Hardened - as shown in Harsco Rail drawing 5122545 (Sheet 2 - Section B-B, Section C-C and inset image). Repeat for installing the other Bracket, Projector Buggy on the opposite side.
2. Loosen fasteners securing the rubber mounts on (Item 1) Sensor Mounting Assembly and adjust center of Sensor to align with center of rail. Adjust Sensor height to 1.52 in (38.6 mm) from the top of the rail - as shown in Harsco Rail drawing 5122545 (Sheet 2 - Section C-C). Securely tighten fasteners on the rubber mounts. Repeat for adjusting the other sensor above the other rail.
3. Connect one end of (Item 14) 3401326 Cable, M12-M/F 3M SH 5-Cond to connector on the side of (Item 11) 5125089 - Enclosure, Derail Kit and the opposite end to the newly mounted (Item 1) 5122546 - Sensor Mounting Assembly - as shown in Harsco Rail drawing 5122545 (sheet 5). Repeat for connecting the other cable to the sensor above the other rail.

Install 5122546 - Sensor Mounting Assembly (Formed Plate-Style Buggy Frame)

(For machines with Solar Laser Liner Projector)

1. Remove existing Male Rod End Nut and install (Item 2) 5122628 - Bracket, Projector Buggy and secure with (Item 3) L426262 1/2-20 Locknut. Repeat for installing the other Bracket, Projector Buggy on the opposite side.
2. Install (Item 1) 5122546 - Sensor Mounting Assembly beneath (Item 2) 5122628 - Bracket, Projector Buggy on both sides of buggy using hardware supplied with Sensor Mounting Assembly as shown in Harsco Rail drawing 5122545 (Sheet 2 - Section B-B, Section C-C and inset image). Repeat for installing the other Sensor Mounting Assembly on the opposite side.
3. Loosen fasteners securing the rubber mounts on (Item 1) Sensor Mounting Assembly and adjust center of sensor to align with center of rail. Adjust Sensor height to 1.52 in (38.6 mm) from the top of the rail - as shown in Harsco Rail drawing 5122545 (Sheet 2 - Section C-C). Securely tighten fasteners on the rubber mounts. Repeat for adjusting the other Sensor Mounting Assembly above the other rail.
4. Connect one end of (Item 14) 3401326 Cable, M12-M/F 3M SH 5-Cond to a connector on the side of (Item 11) 5125089 - Enclosure, Derail Kit and the opposite end to the newly mounted (Item 1) 5122546 - Sensor Mounting Assembly - as shown in Harsco Rail drawing 5122545 (Sheet 5). Repeat for connecting the other cable to the sensor on the other rail.

Install 5125084 - Kit, Radio I/O Module

1. Drill four Ø .22 holes inside the cab at location shown in Harsco Rail drawing 5122545 (Sheet 4 - Section A-A).
2. Install 5125084 Kit, Radio I/O Module (part of Item 11 - 5125089, Enclosure, Derail Kit) inside cab. Secure radio module with hardware supplied with it - four each (Item 19) F011626 10-24 x 3/4 Skt Hd CS and (Item 20) F009542 Nut, Hex, #10-24, Gd2, ZP. See Harsco Rail drawing 5122545 (Sheet 4 - Section A-A, and Detail F)
3. Connect 3401340 Cable, M12-M/PIG 8M 4-Cond HF (part of Item 11- 5125089, Enclosure, Derail Kit) to C2 port on Jupiter Module CAN:05 and to the newly mounted radio module inside cab - as shown in Harsco Rail drawing 5122545 (sheets 4 & 5).

Installing 5125089 - Enclosure, Derail Kit (Tube-Style Buggy Frame)

1. If mounting Enclosure to a tube-constructed buggy frame, remove the existing Distribution J-Box Assembly (Harsco Rail 5034556) from projector buggy. Save the fasteners for re-installation later.
2. Drill four Ø .28 holes in the existing 5016794 - Enclosure Brkt as shown in Harsco Rail drawing 5122545 (Sheet 3 - Section G-G).
3. Secure the new (Item 10) 5016794 - Enclosure Brkt, onto the other side of the newly modified 5016794 - Enclosure Brkt with four new fasteners; (Item 6) F004606 1/4-20 Elastic Stop Nut, (Item 7) F002355 HHD Cap Scr 1/4-20x3/4 GR4, and (Item 8) F001106 Washer, Flat, 1/4", USS, ZP, - as shown in Harsco Rail drawing 5122545 (Sheet 3 - Section G-G).
4. Re-install the previously removed Distribution J-Box Assembly (Harsco Rail 5034556) to projector buggy frame using the original fasteners.
5. Secure the new (Item 11) 5125089 - Enclosure, Derail Kit onto new (Item 10) 5016794 - Enclosure Brkt, with four new fasteners; (Item 5) F002734 Hex Cap Scr 1/4-20x2 3/4 Gr5, (Item 6) F004606 1/4-20 Elastic Stop Nut, and (Item 8) F001106 Washer, Flat, 1/4", USS, ZP, - as shown in Harsco Rail drawing 5122545 (Sheet 3 - Section G-G).

Install 5122546 - Sensor Mounting Assembly (Tube-Style Buggy Frame)

(For machines without Solar Laser Liner Projector)

Note: Projector Buggies without a Solar Laser Liner Projector use 0-1405308-0-01 Guide Bar and 0-1405307-0-01 Guide Tube as part of the projector buggy. Mounting the kit on this unit requires (Item 9) 5122549 - Bracket, Tube to mount (Item 1) 5122546 - Sensor Mounting Assembly. See Harsco Rail drawing 5122545 (Sheet 3 - Section E-E and inset image).

1. Assemble (Item 1) 5122546 - Sensor Mounting Assembly onto the square tubing with (Item 9) 5122549 - Bracket, Tube using hardware included with Sensor Mounting Assembly. See Harsco Rail drawing 5122545 (Sheet 3 - Section E-E and Inset Image). Repeat for installing the other Sensor Mounting Assembly on the opposite side.
2. Loosen fasteners securing the rubber mounts on the Sensor Mounting Assembly and adjust center of sensor to align with center of rail. Adjust Sensor height to 1.52 in (38.6 mm) from the top of the rail - as shown in Harsco Rail drawing 5122545 (Sheet 2 - Section C-C). Repeat for adjusting the other Sensor Mounting Assembly on the opposite side.

Installing Buggy Derail Alarm Software

1. The Buggy Derail Alarm Software (Item 18) is programmed onto the 8GB USB flash drive, and is specifically written for each machine by the serial number provided when the Buggy Derail Alarm Kit was ordered. Be certain to follow the software installation instructions exactly.
2. Verify and log all machine parameters before beginning the software download.
3. Turn the Jupiter computer OFF.
4. Make sure that the machine's engine is shut down, parking brakes are applied and battery master switch is OFF.
5. Turn the battery master switch on. Turn the Jupiter computer ON.
6. In some Jupiter-II applications, a new software "Install Permission" panel now asks the user whether they want to shut down the machine application in order to download a new software package.
 - a. Press the "Esc" button to leave the USB drive installed but not install new software.
 - b. Press the "Enter" button to proceed to software install (Super-Download screen).
 - c. When software has finished installing, turn the Jupiter computer OFF and then back ON again.
7. Verify that none of the machine parameters have changed. If any parameters have changed, correct them using the parameter information that was logged.
8. Start the machine's engine. Turn Jupiter ON. Check the function of the entire Jupiter Control System. Make sure all functions controlled through the Jupiter II system are operating properly.
9. If any problems are encountered, contact the Harsco Rail Service Department.

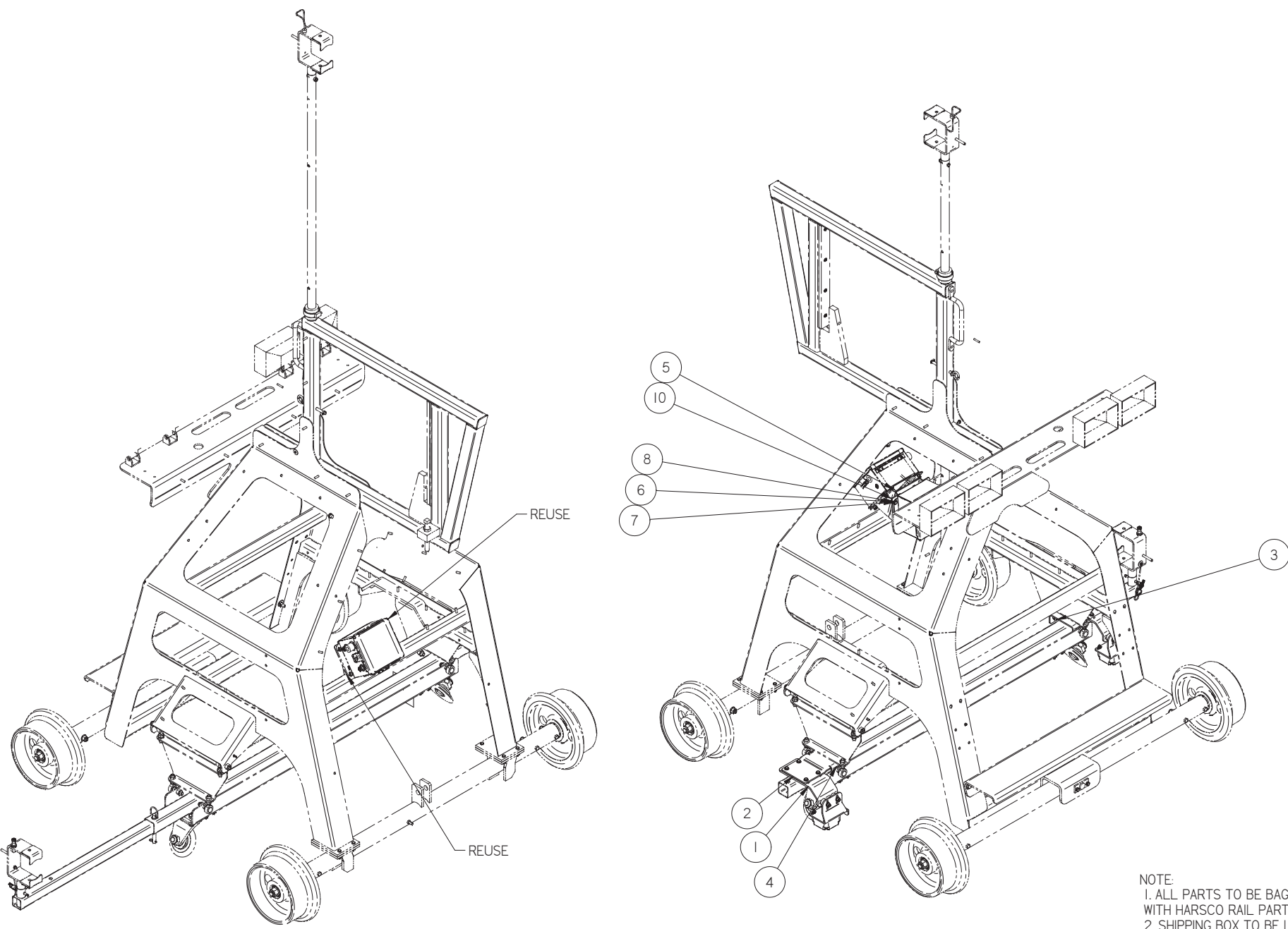
© 2021 HARSCO RAIL,LLC, ALL RIGHTS RESERVED

306 West 4th Street
Fairmont, MN
56031-1837
Tel: (507) 235-7376
Parts: (800) 800-6410
Fax: (507) 235-7372

2401 Edmund Road, Box 20
Cayce-West Columbia, SC
29171-0020
Tel: (803) 822-7420
Parts: (800) 800-6410
Fax: (803) 822-7403

1200 Conrad Industrial Dr.
Ludington, MI
49431
Tel: (231) 843-3431
Parts: (800) 800-6410
Fax: (231) 843-1644

Printed In USA



EXISTING PROJECTOR BUGGY

EXISTING PROJECTOR BUGGY

ITEM	PART NO	QTY	DESCRIPTION
1	5122546	2	SENSOR MOUNTING ASSEMBLY
2	5122628	2	BRACKET,PROJECTOR BUGGY
3	L426262	4	1/2-20 LOCKNUT
4	202063	4	WASHER, FLAT, 1/2", HARDENED
5	F002734	4	HEX CAP SCR 1/4-20X2 3/4 GR5
6	F004606	8	DC-1/4-20 ELASTIC STOP NUT
7	F002355	8	DC-HHD CAP SCR1/4-20X3/4GR4
8	F001106	8	WASHER, FLAT, 1/4", USS, ZP
9	5122549	2	BRACKET, TUBE
10	5016794	1	ENCLOSURE BRKT
11	5125089	1	ENCLOSURE, DERAIL KIT
12	I55421-1	1	CONNECTOR, SQ, 90 DEG .50, GRIP .37-50
13	F019878	1	LOCKNUT 1/2NPT ELEC FITG
14	3401326	2	CABLE,MI2-M/F 3M SH 5-COND
15	F018229	16	TY-RAP
16	5122654	0	FRONT COVER,PROJECTOR BUGGY
17	5123375	0	FRONT COVER,PROJECTOR BUGGY RH
18	5127041	1	BUGGY DERAIL ALARM SOFTWARE
19	F011626	4	DC-10-24 X 3/4 SKT HD CS
20	F009542	4	NUT, HEX, #10-24, GD2, ZP

(D)

REFERENCE DRAWINGS	
INCLUDE A COPY OF EACH OF THE FOLLOWING DRAWINGS WITH EACH KIT	
DRAWING#	DESCRIPTION
5122546	SENSOR MOUNTING ASSEMBLY
SB21-005	SERVICE BULLETIN, BUGGY DERAIL ALARM KIT-MARK IV
5016794	BRACKET, ENCLOSURE
5118866	COILED CABLE, 18AWG/15 COND

NOTE:
 1. ALL PARTS TO BE BAGGED AND LABELED WITH HARSCO RAIL PART NUMBERS.
 2. SHIPPING BOX TO BE LABELED WITH:
 a. HARSCO RAIL KIT PART NUMBER, REVISION
 b. P.O. NUMBER
 3. ALL BRACKETS SHALL BE PAINTED WITH FLAT BLACK COLOR.

SIMILAR TO 5086657

CONFIDENTIAL

COPYRIGHT 2021 HARSCO CORPORATION. ALL RIGHTS RESERVED. THIS DRAWING OR DOCUMENT IS THE PROPERTY OF HARSCO AND EMBODIES CONFIDENTIAL INFORMATION, TRADE SECRET INFORMATION, AND/OR KNOW-HOW THAT IS THE PROPERTY OF HARSCO. BY ACCEPTING THIS DRAWING OR DOCUMENT, THE RECIPIENT AGREES (1) NOT TO PROVIDE OR OTHERWISE MAKE AVAILABLE, THE DRAWING OR DOCUMENT, OR ANY INFORMATION OR KNOW-HOW EMBODIED THEREIN, TO ANY THIRD PARTY AND (2) NOT TO REPRODUCE OR USE THE DRAWING OR DOCUMENT TO MANUFACTURE ANY APPARATUS OR DEVICE, WITHOUT THE PRIOR WRITTEN AUTHORIZATION OF HARSCO.

FEATURES ENCLOSED BY KEY CHARACTERISTICS				UNLESS OTHERWISE SPECIFIED:			
NOMINAL SIZE	TOLERANCE	FINISH	PLACEMENT	NOMINAL SIZE	TOLERANCE	FINISH	PLACEMENT
Ø .000	±.005	AS-BUILT	SEE DETAIL	Ø .000	±.005	AS-BUILT	SEE DETAIL
Ø .000	±.005	AS-BUILT	SEE DETAIL	Ø .000	±.005	AS-BUILT	SEE DETAIL
Ø .000	±.005	AS-BUILT	SEE DETAIL	Ø .000	±.005	AS-BUILT	SEE DETAIL
Ø .000	±.005	AS-BUILT	SEE DETAIL	Ø .000	±.005	AS-BUILT	SEE DETAIL

CHANGE	R/L	DESCRIPTION	DR	DATE
EC614807	A	NEW RELEASE	AVS	03/08/21
EC615535	B	VIEWS REARRANGED, ITEMS REORDERED, ADDED SHEET#4.5.	BKP	06/24/21
EC615800	C	ADDED IT.18.	BKP	08/12/21
EC615938	D	ADDED IT.19,20. IN SHEET# 4 ADDED DETAIL F.	BKP	09/02/21

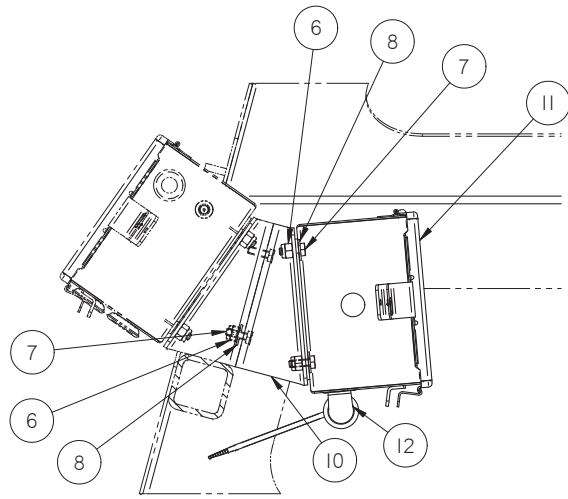
DR	DATE	DESCRIPTION
AVS	03/08/21	BUGGY DERAIL ALARM KIT-MARK IV
BKP	06/24/21	
BKP	08/12/21	
BKP	09/02/21	

Weight	52.4 lbm	Drawn	vamin	Date Drawn	03/08/2021
SOLID EDGE DRAWING		DO NOT SCALE		Part Number	

5122545

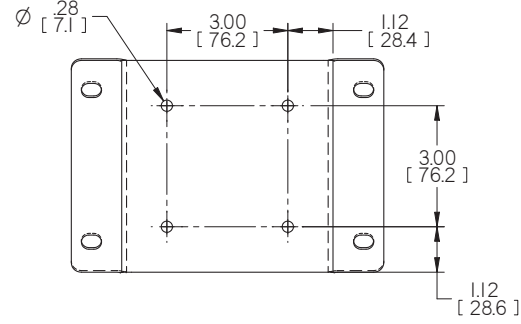
Machine Type: MARK IV
Sheet 1 of 5

Inch [mm]

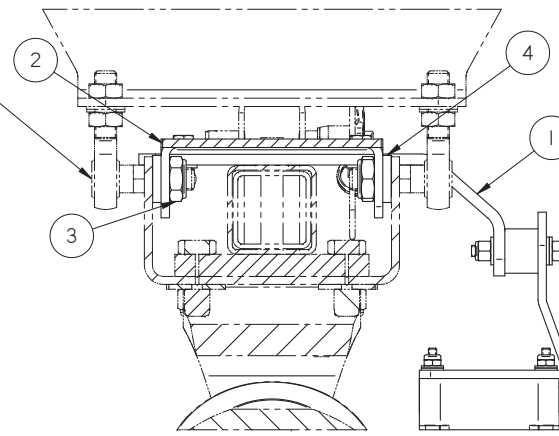


SECTION D-D

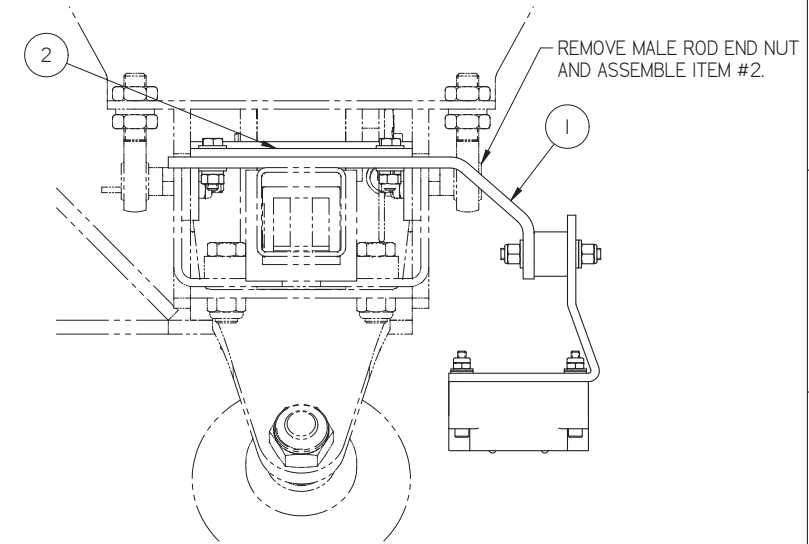
REMOVE MALE ROD END NUT AND ASSEMBLE ITEM #2,3 AND 4.



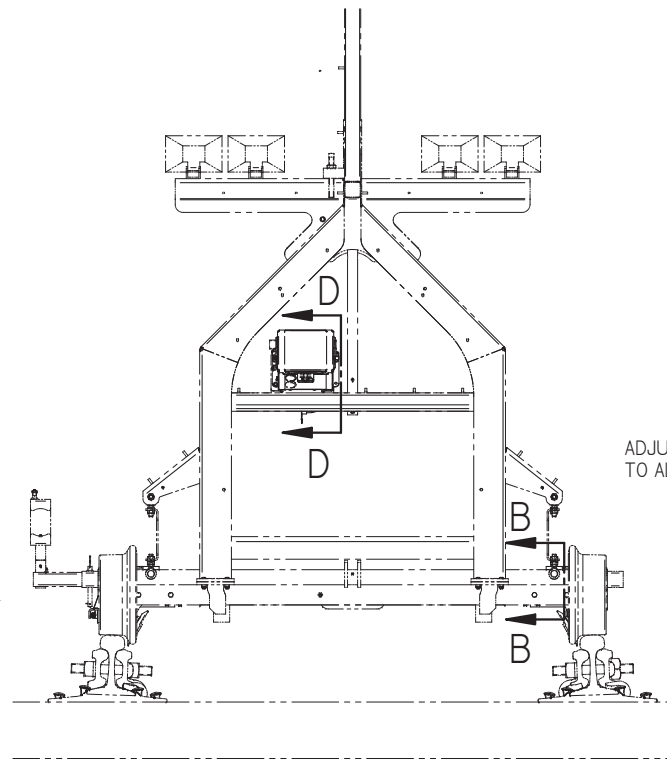
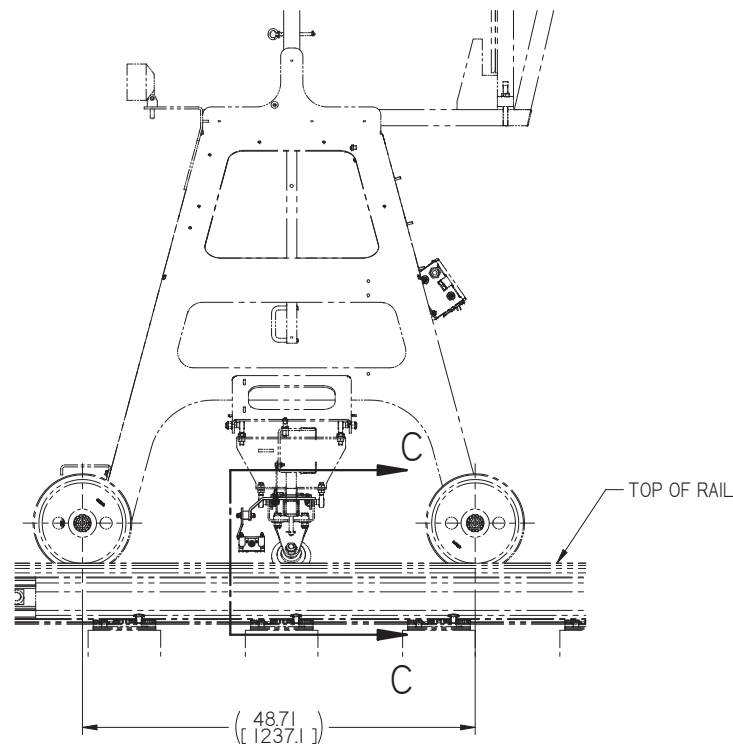
5016794 TO BE DRILLED AS SHOWN ABOVE ON EXISTING BRACKET



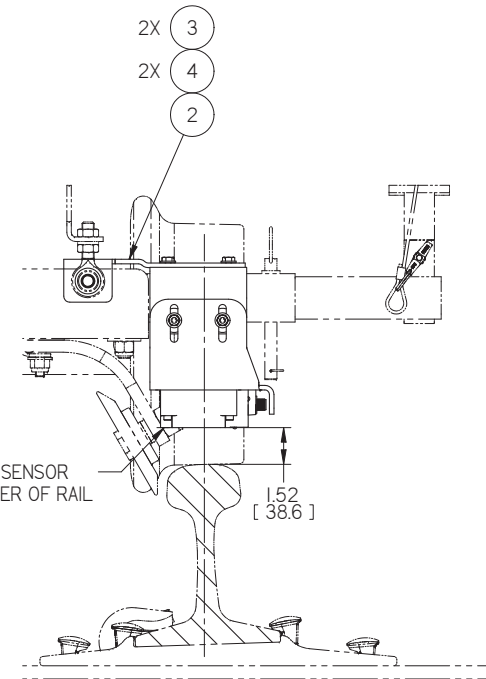
SECTION B-B



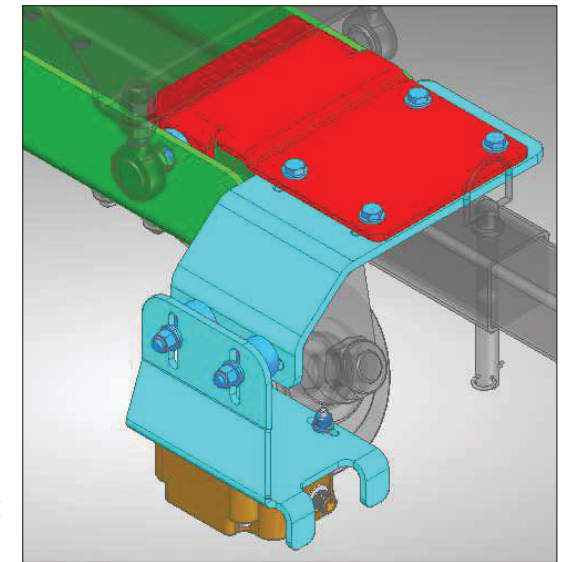
THIS ARRANGEMENT IS ONLY FOR SOLAR LASER LINER PROJECTOR



ADJUST CENTER OF SENSOR TO ALIGN WITH CENTER OF RAIL

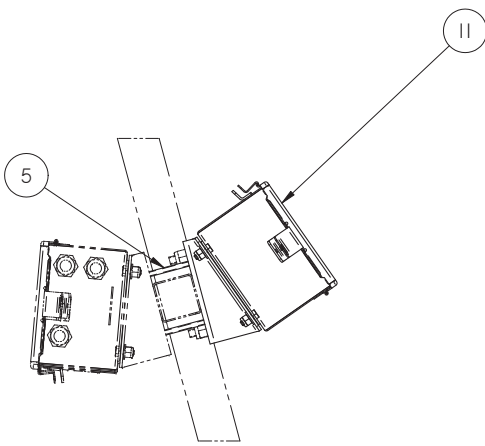
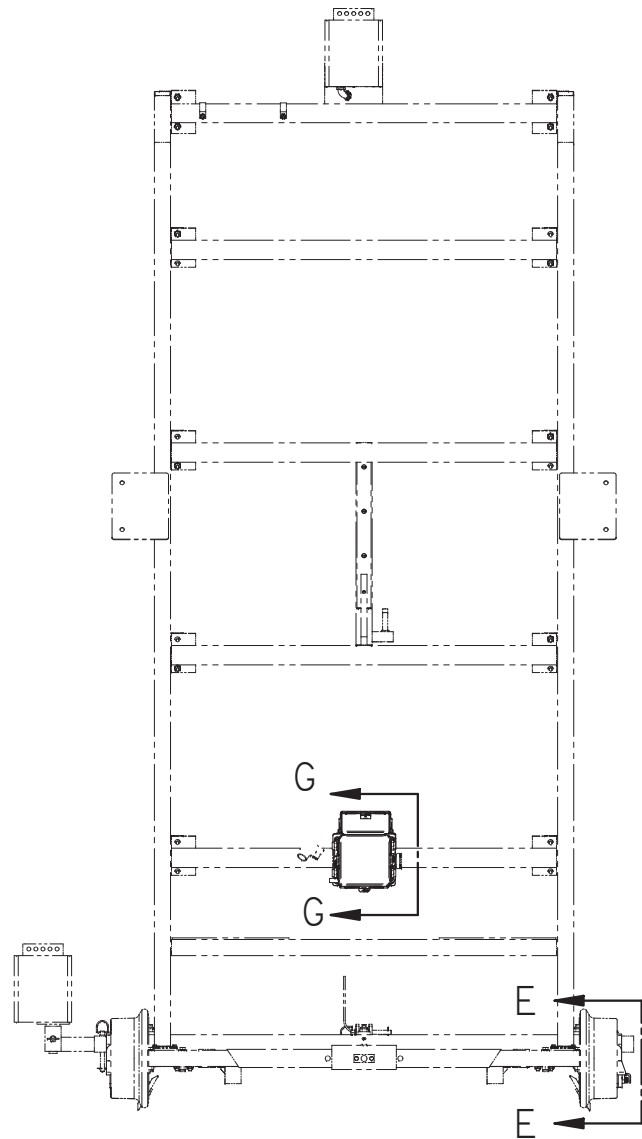


SECTION C-C

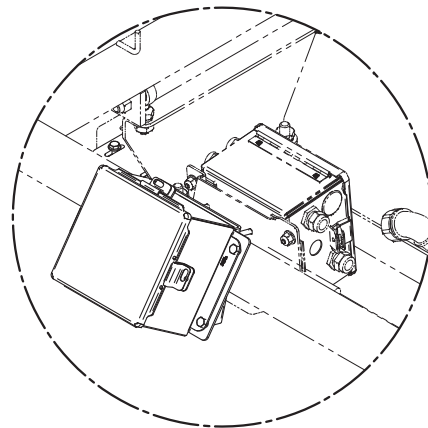


CONFIDENTIAL				FEATURES ENCLOSED BY KEY CHARACTERISTICS				UNLESS OTHERWISE SPECIFIED:				CHANGE		REVISION		DR	DATE	Description	HARSCO RAIL	
NOMINAL SIZE	PLUG OR WELLS	PLUG OR WELLS	PLUG OR WELLS	NOMINAL SIZE	PLUG OR WELLS	PLUG OR WELLS	PLUG OR WELLS	UNLESS OTHERWISE SPECIFIED:	CHANGE	R/L	DR	DATE	Description	Machine	Type	Size				
0	0	03	005	0	150	0	0	1. ALL DIMENSIONS UNLESS OTHERWISE SPECIFIED ARE IN INCHES AND DECIMALS THEREOF.	EC614807	A	AVS	03/08/21	NEW RELEASE	MARK IV	MARK IV	D				
0	0	03	005	0	150	0	0	2. REMOVE BURRS AND BREAK SHARP EDGES.	EC615535	B	BKP	06/24/21	VIEWS REARRANGED, ITEMS REORDERED, ADDED SHEET #4.5.	52.4 lbm	vamin	03/08/2021	BUGGY DERAIL ALARM KIT-MARK IV	5122545	2 of 5	
0	0	03	005	0	150	0	0	3. ALL SURFACE FINISHES SHALL BE UNLESS OTHERWISE SPECIFIED.	EC615800	C	BKP	08/12/21	ADDED IT.18.	SOLID EDGE DRAWING	DO NOT SCALE					
0	0	03	005	0	150	0	0	4. ALL WELDS SHALL ADHERE TO THE MOST CONSERVATIVE WELDING PROCEDURE.	EC615938	D	BKP	09/02/21	ADDED IT.19,20. IN SHEET# 4 ADDED DETAIL F.							
0	0	03	005	0	150	0	0	5. TORQUE ALL FITTINGS PER STD 004.												
0	0	03	005	0	150	0	0	6. THIRD ANGLE PROJECTION UNLESS OTHERWISE SPECIFIED.												
0	0	03	005	0	150	0	0	7. UNLESS OTHERWISE SPECIFIED, ALL DIMENSIONS SHALL BE TO THE CENTER UNLESS OTHERWISE SPECIFIED.												
0	0	03	005	0	150	0	0	8. UNLESS OTHERWISE SPECIFIED, ALL DIMENSIONS SHALL BE TO THE CENTER UNLESS OTHERWISE SPECIFIED.												
0	0	03	005	0	150	0	0	9. UNLESS OTHERWISE SPECIFIED, ALL DIMENSIONS SHALL BE TO THE CENTER UNLESS OTHERWISE SPECIFIED.												
0	0	03	005	0	150	0	0	10. UNLESS OTHERWISE SPECIFIED, ALL DIMENSIONS SHALL BE TO THE CENTER UNLESS OTHERWISE SPECIFIED.												
0	0	03	005	0	150	0	0	11. UNLESS OTHERWISE SPECIFIED, ALL DIMENSIONS SHALL BE TO THE CENTER UNLESS OTHERWISE SPECIFIED.												
0	0	03	005	0	150	0	0	12. UNLESS OTHERWISE SPECIFIED, ALL DIMENSIONS SHALL BE TO THE CENTER UNLESS OTHERWISE SPECIFIED.												
0	0	03	005	0	150	0	0	13. UNLESS OTHERWISE SPECIFIED, ALL DIMENSIONS SHALL BE TO THE CENTER UNLESS OTHERWISE SPECIFIED.												
0	0	03	005	0	150	0	0	14. UNLESS OTHERWISE SPECIFIED, ALL DIMENSIONS SHALL BE TO THE CENTER UNLESS OTHERWISE SPECIFIED.												
0	0	03	005	0	150	0	0	15. UNLESS OTHERWISE SPECIFIED, ALL DIMENSIONS SHALL BE TO THE CENTER UNLESS OTHERWISE SPECIFIED.												
0	0	03	005	0	150	0	0	16. UNLESS OTHERWISE SPECIFIED, ALL DIMENSIONS SHALL BE TO THE CENTER UNLESS OTHERWISE SPECIFIED.												
0	0	03	005	0	150	0	0	17. UNLESS OTHERWISE SPECIFIED, ALL DIMENSIONS SHALL BE TO THE CENTER UNLESS OTHERWISE SPECIFIED.												
0	0	03	005	0	150	0	0	18. UNLESS OTHERWISE SPECIFIED, ALL DIMENSIONS SHALL BE TO THE CENTER UNLESS OTHERWISE SPECIFIED.												
0	0	03	005	0	150	0	0	19. UNLESS OTHERWISE SPECIFIED, ALL DIMENSIONS SHALL BE TO THE CENTER UNLESS OTHERWISE SPECIFIED.												
0	0	03	005	0	150	0	0	20. UNLESS OTHERWISE SPECIFIED, ALL DIMENSIONS SHALL BE TO THE CENTER UNLESS OTHERWISE SPECIFIED.												
0	0	03	005	0	150	0	0	21. UNLESS OTHERWISE SPECIFIED, ALL DIMENSIONS SHALL BE TO THE CENTER UNLESS OTHERWISE SPECIFIED.												
0	0	03	005	0	150	0	0	22. UNLESS OTHERWISE SPECIFIED, ALL DIMENSIONS SHALL BE TO THE CENTER UNLESS OTHERWISE SPECIFIED.												
0	0	03	005	0	150	0	0	23. UNLESS OTHERWISE SPECIFIED, ALL DIMENSIONS SHALL BE TO THE CENTER UNLESS OTHERWISE SPECIFIED.												
0	0	03	005	0	150	0	0	24. UNLESS OTHERWISE SPECIFIED, ALL DIMENSIONS SHALL BE TO THE CENTER UNLESS OTHERWISE SPECIFIED.												

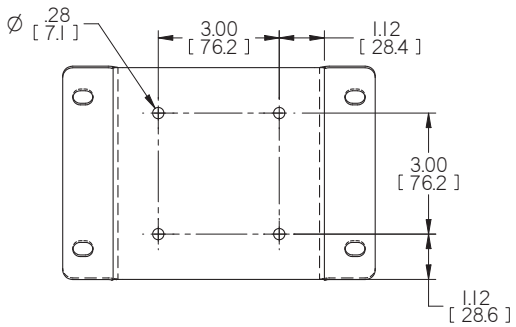
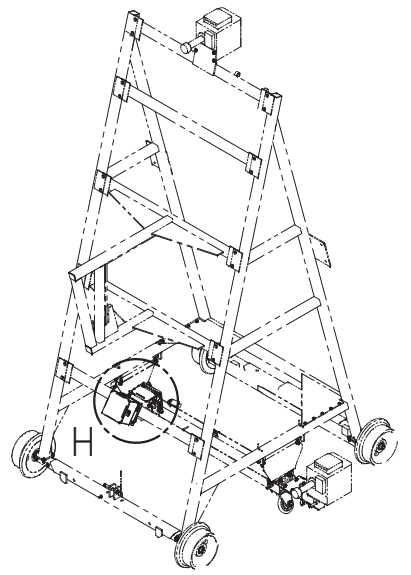
Inch [mm]



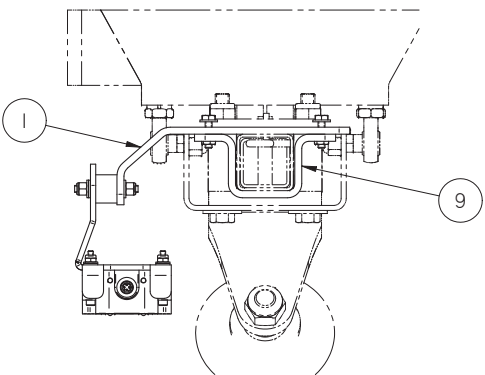
SECTION G-G



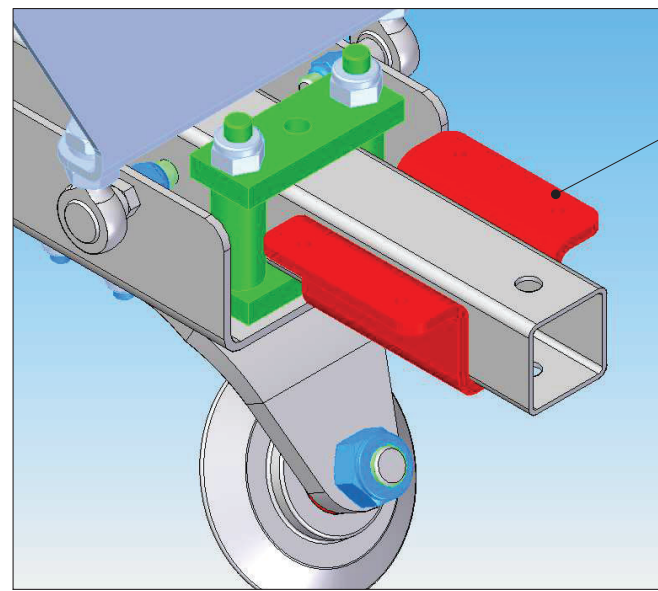
DETAIL H



5016794 TO BE DRILLED AS SHOWN ABOVE ON EXISTING BRACKET



SECTION E-E



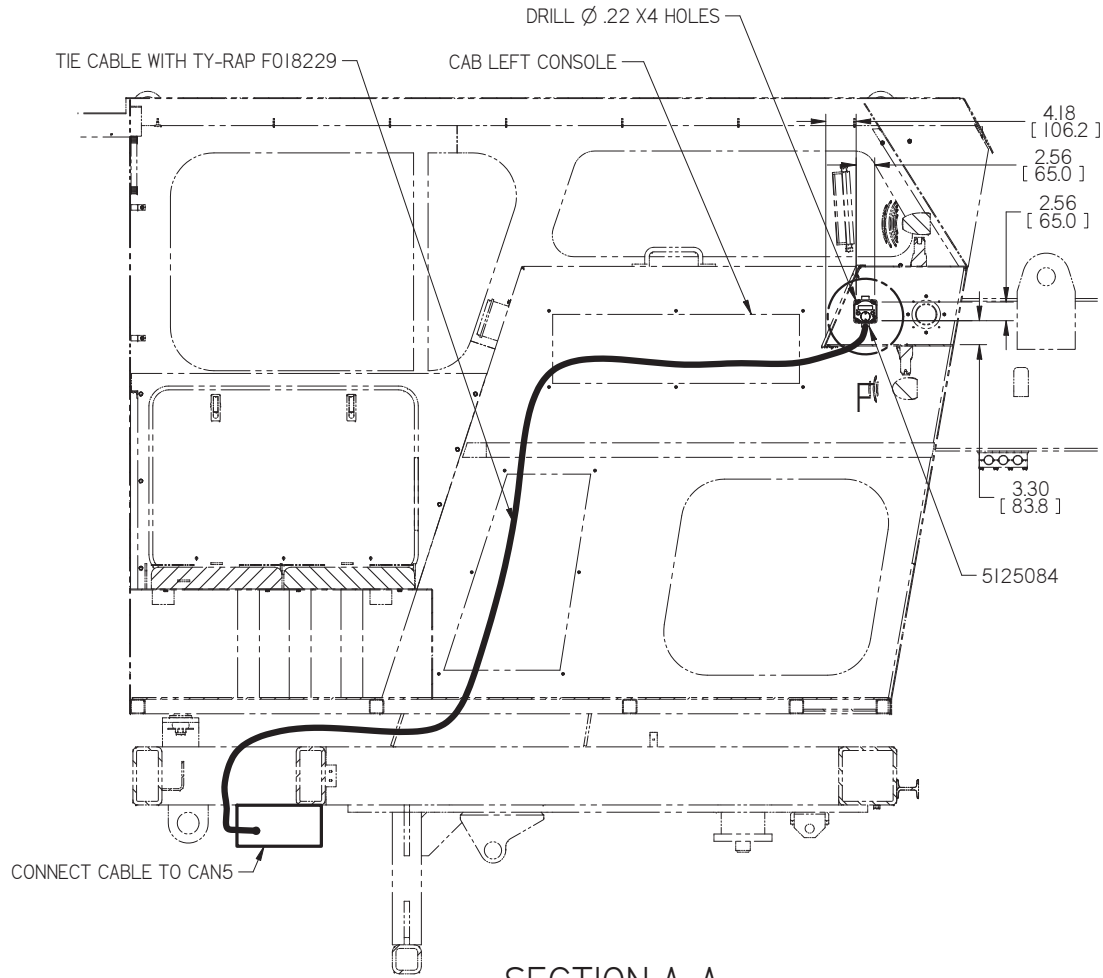
USE 5122549 WHEN 0-1405308-0-01, 0-1405307-0-01 (GREEN COLOURED ITEMS)

CONFIDENTIAL				FEATURES ENCLOSED BY ARE KEY CHARACTERISTICS UNLESS OTHERWISE SPECIFIED: 1. REMOVE BURRS AND BREAK SHARP EDGES 2. ALL SURFACE FINISHES SHALL BE UNFINISHED 3. SURFACE FINISH SHALL BE UNFINISHED 4. ANGULAR TOLERANCE OF ± 30° 5. ALL WELDS SHALL ADHERE TO THE MOST CONSERVATIVE METHOD USE 6. WELD ALL WELDS TO STANDARD 7. TORQUE ALL FITTINGS PER STD 088		CHANGE EC614807 EC615535 EC615800 EC615938	R/L A B C D	REVISION NEW RELEASE VIEWS REARRANGED, ITEMS REORDERED, ADDED SHEET#4. ADDED IT.18. ADDED IT.19,20. IN SHEET# 4 ADDED DETAIL F.	DR AVS BKP BKP	DATE 03/08/21 06/24/21 08/12/21 09/02/21	Description BUGGY DERAIL ALARM KIT-MARK IV	HARSCO RAIL
COPYRIGHT 2021 HARSCO CORPORATION. ALL RIGHTS RESERVED. THIS DRAWING OR DOCUMENT IS THE PROPERTY OF HARSCO AND EMBODIES CONFIDENTIAL INFORMATION, TRADE SECRET INFORMATION, AND/OR KNOW-HOW THAT IS THE PROPERTY OF HARSCO. BY ACCEPTING THIS DRAWING OR DOCUMENT, THE RECIPIENT AGREES (1) NOT TO PROVIDE OR OTHERWISE MAKE AVAILABLE, THE DRAWING OR DOCUMENT, OR ANY INFORMATION OR KNOW-HOW EMBODIED THEREIN, TO ANY THIRD PARTY AND (2) NOT TO REPRODUCE OR USE THE DRAWING OR DOCUMENT TO MANUFACTURE ANY APPARATUS OR DEVICE, WITHOUT THE PRIOR WRITTEN AUTHORIZATION OF HARSCO.										Machine Type MARK IV	Size D	
Weight		52.4 lbm		Drawn		vamin		Date Drawn		03/08/2021		
SOLID EDGE DRAWING				DO NOT SCALE				Part Number		5122545		
										Sheet 3 of 5		

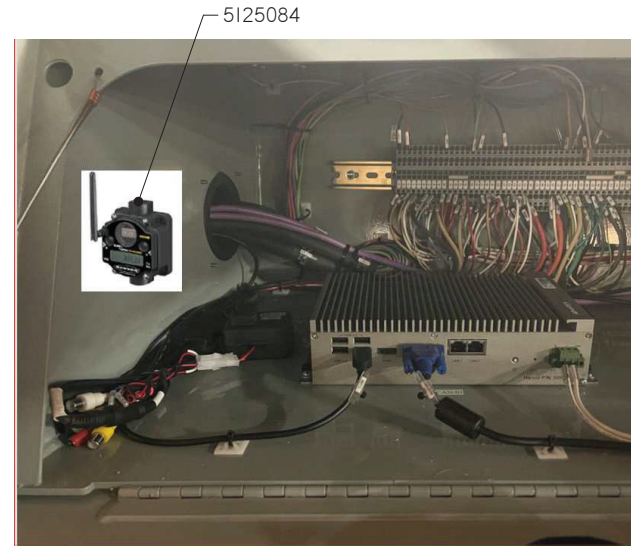
Inch [mm]



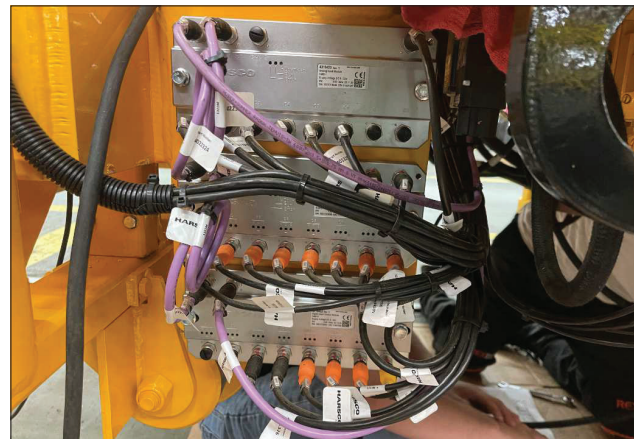
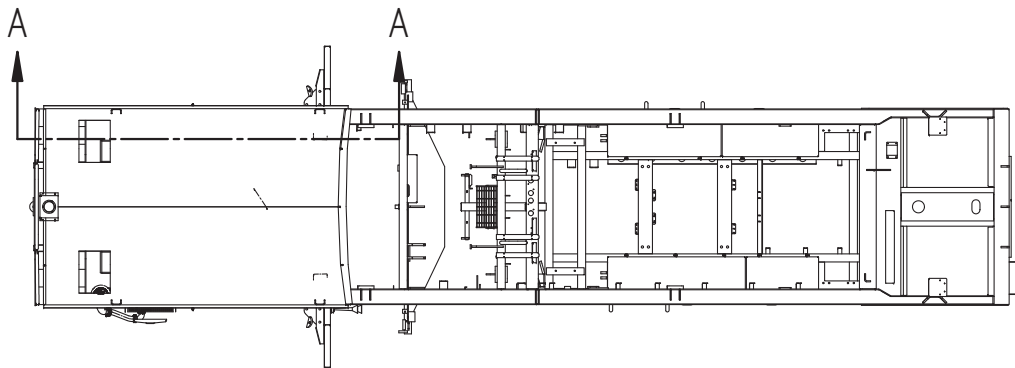
LEFT CONSOLE



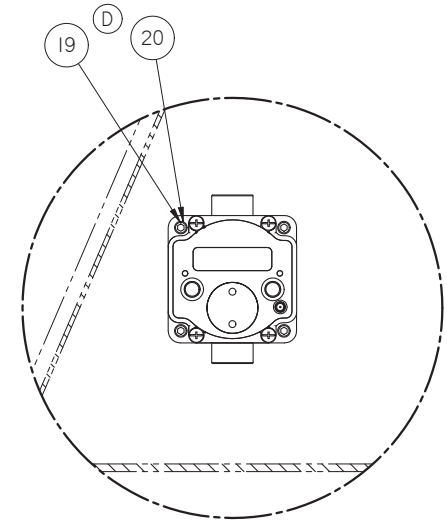
SECTION A-A



FRONT CONSOLE



CONNECT CABLE TO CAN



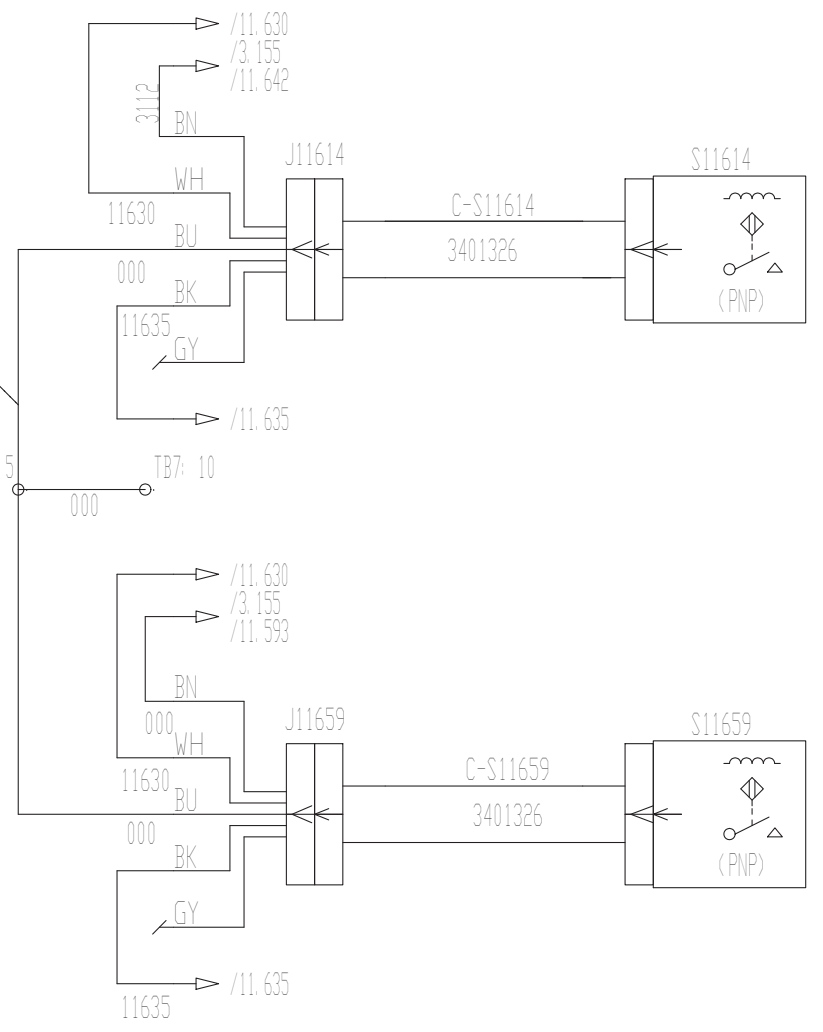
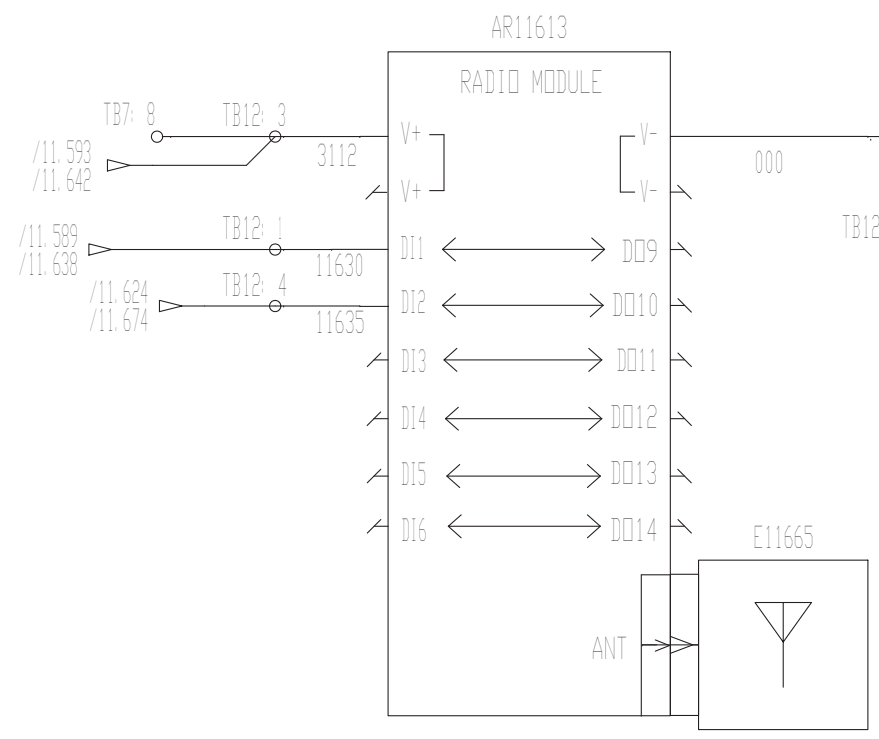
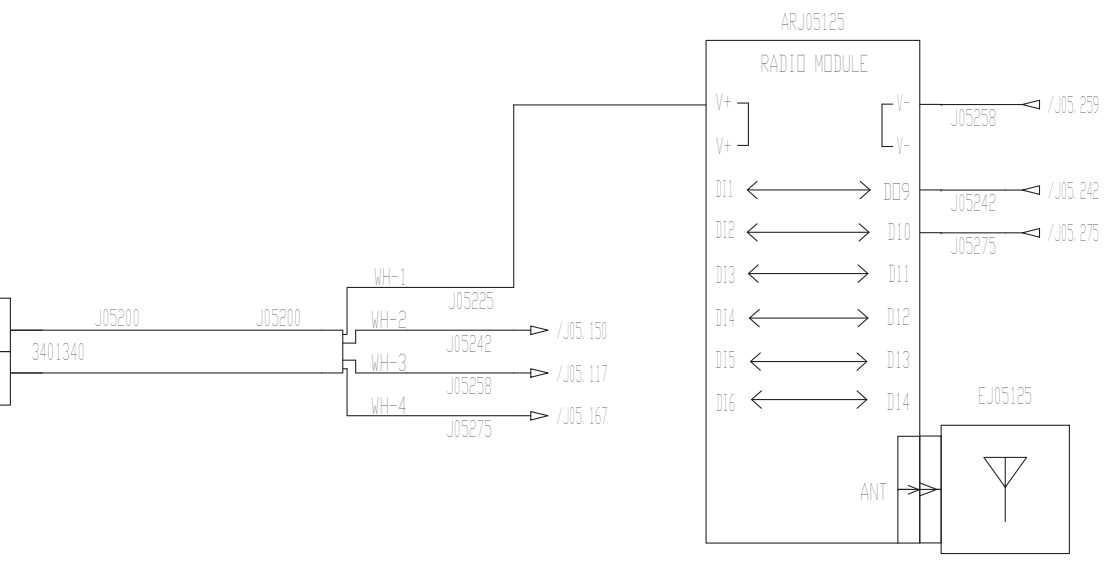
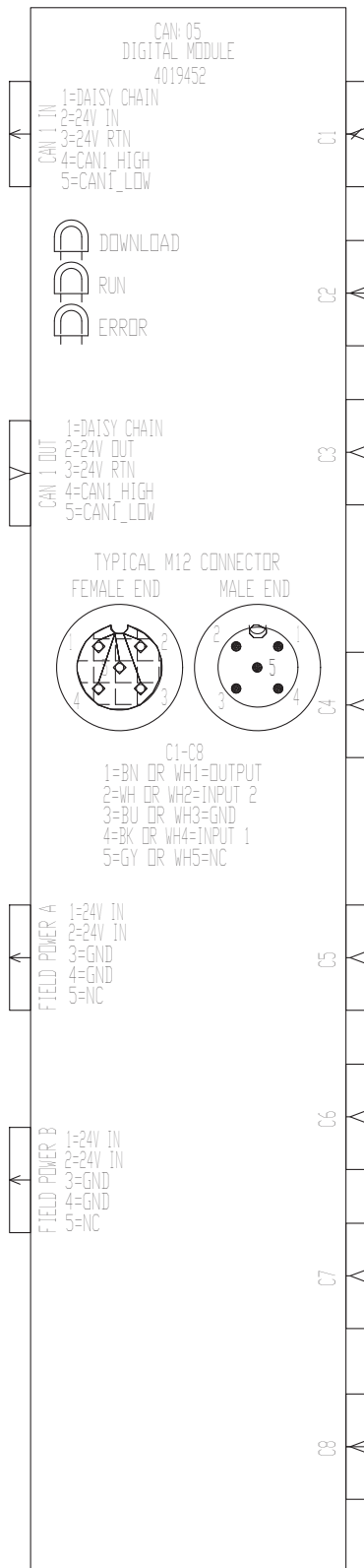
DETAIL F

FEATURES ENCLOSED BY □ ARE KEY CHARACTERISTICS				UNLESS OTHERWISE SPECIFIED:				CHANGE R/L		REVISION		DR	DATE	Description	HARSCO RAIL	
NO.	DATE	BY	REASON	NO.	DATE	BY	REASON							Machine Type	Part Number	Sheet
0	0	03	005	0	150	0	23	EC614807	A	NEW RELEASE	AVS	03/08/21	BUGGY DERAIL ALARM KIT-MARK IV	MARK IV	5122545	4 of 5
1	0	03	005	0	150	0	23	EC615535	B	VIEWS REARRANGED, ITEMS REORDERED, ADDED SHEET#4.5.	BKP	06/24/21				
18	24	24	008	150	800	1.0	20	EC615800	C	ADDED IT.18.	BKP	08/12/21				
24	-	06	010	800	-	1.5	25	EC615938	D	ADDED IT.19,20. IN SHEET# 4 ADDED DETAIL F.	BKP	09/02/21				

CONFIDENTIAL
 COPYRIGHT 2021 HARSCO CORPORATION. ALL RIGHTS RESERVED. THIS DRAWING OR DOCUMENT IS THE PROPERTY OF HARSCO AND EMBODIES CONFIDENTIAL INFORMATION, TRADE SECRET INFORMATION, AND/OR KNOW-HOW THAT IS THE PROPERTY OF HARSCO. BY ACCEPTING THIS DRAWING OR DOCUMENT, THE RECIPIENT AGREES (1) NOT TO PROVIDE OR OTHERWISE MAKE AVAILABLE, THE DRAWING OR DOCUMENT, OR ANY INFORMATION OR KNOW-HOW EMBODIED THEREIN, TO ANY THIRD PARTY AND (2) NOT TO REPRODUCE OR USE THE DRAWING OR DOCUMENT TO MANUFACTURE ANY APPARATUS OR DEVICE, WITHOUT THE PRIOR WRITTEN AUTHORIZATION OF HARSCO.

WEIGHT: 52.4 lbm
 DRAWN: vamin
 DATE DRAWN: 03/08/2021
 SOLID EDGE DRAWING
 DO NOT SCALE

Inch [mm]



CONFIDENTIAL				FEATURES ENCLOSED IN □ ARE KEY CHARACTERISTICS				UNLESS OTHERWISE SPECIFIED:				CHANGE R/L		REVISION		DR	DATE	Description	HARSCO RAIL	
NO.	DATE	BY	REASON	NO.	DATE	BY	REASON	1.	RELIEVE BURRS AND BREAK SHARP EDGES	EC614807	A	NEW RELEASE	AVS	03/08/21	BUGGY DERAIL ALARM KIT-MARK IV	MARK IV	52.4 lbm	vamin	03/08/2021	5122545
0	0	03	055	0	150	08	23	2. ALL DIMENSIONS UNLESS OTHERWISE SPECIFIED ARE IN INCHES (ANGULAR TOLERANCE OF ±.005°)	EC615535	B	VIEWS REARRANGED, ITEMS REORDERED, ADDED SHEET#4.5.	BKP	06/24/21							
1	8	24	008	150	900	1.0	20	3. ALL WELDS SHOULD ADHERE TO THE MOST CONSERVATIVE METHOD	EC615800	C	ADDED IT.18.	BKP	08/12/21							
24	-	06	010	800	-	1.5	25	4. TORQUE ALL FITTINGS PER STD 088	EC615938	D	ADDED IT.19,20. IN SHEET# 4 ADDED DETAIL F.	BKP	09/02/21							
<small>THIRD ANGLE PROJECTION UNLESS OTHERWISE SPECIFIED ADAPTED FROM FIRST ANGLE STANDARD STD-1601D</small>										SOLID EDGE DRAWING		DO NOT SCALE		5 of 5						