



# Harsco Track Technologies

Harsco

www.harscotrack.com

---

## SERVICE BULLETIN MAINTENANCE OF WAY EQUIPMENT

---

**DATE:** 2-5-2002 **BULLETIN NO:** 02-003

**TITLE:** WABCO AIR COMPRESSOR SERVICE GROUP - CUMMINS 4BTA3.9 ENGINE

**RATING:**

<input type="checkbox"/>	<b>DIRECTIVE</b> (Action Is Required)	<input type="checkbox"/>	<b>ALERT</b> (Potential Problem)
<input type="checkbox"/>	<b>INFORMATION</b> (Action Is Optional)	<input checked="" type="checkbox"/>	<b>PRODUCT IMPROVEMENT</b> (Enhance Product)

**PRODUCT SERIES / MODEL:** W96 Series E TRAK GUN™ Spike Driver  
W96 Series F STRIKER SPIKER™ Spike Driver  
RMC306 Series B / C ANCHOR BOXER® Anchor Applicator

**SERIAL NO:** All Models Equipped With Cummins 4BTA3.9 Engine

**SUMMARY:** New Cummins 4BTA3.9 engines are now factory equipped with WABCO air compressors. The existing HOLSET air compressor can be replaced by a WABCO Air Compressor Service Group part #196997.

**OPERATIONAL IMPACT:** The WABCO air compressor will improve machine reliability.

**ACTION:** The installation of this Service Group requires:

- Disconnecting the air, cooling and lubrication lines from the existing air compressor.
- Removing the existing air compressor from the engine.
- Installing the new air compressor on the engine.
- Reconnecting the air, cooling and lubrication lines to the new air compressor.

**CONTACT:** If you have any questions or if we can be of any service, please contact the Service Department at the Fairmont, MN. facility, (507) 235-3361.

**SAFETY INFORMATION**

- **FOLLOW APPLICABLE RAILROAD LOCKOUT - TAGOUT PROCEDURE TO REMOVE ALL ENERGY SOURCES FROM MACHINE. FAILURE TO COMPLY COULD RESULT IN SEVERE BODILY INJURY.**

**SERVICE GROUP INSTALLATION** - See Figure 1, Figure 2, Figure 3 and Figure 4

1. See Figure 1. Locate the existing HOLSET air compressor mounted on the engine.
2. Disconnect the air, cooling and lubrication lines from the existing HOLSET air compressor.

*Note: Be sure to note where the air, cooling and lubrication lines are connected to for proper re-assembly.*

3. Remove the existing HOLSET air compressor from the engine.

*Note: Do not discard any components as some components will be re-used.*

4. Install the new WABCO Air Compressor Service Group to the engine as shown in Figure 2, Figure 3 and Figure 4.

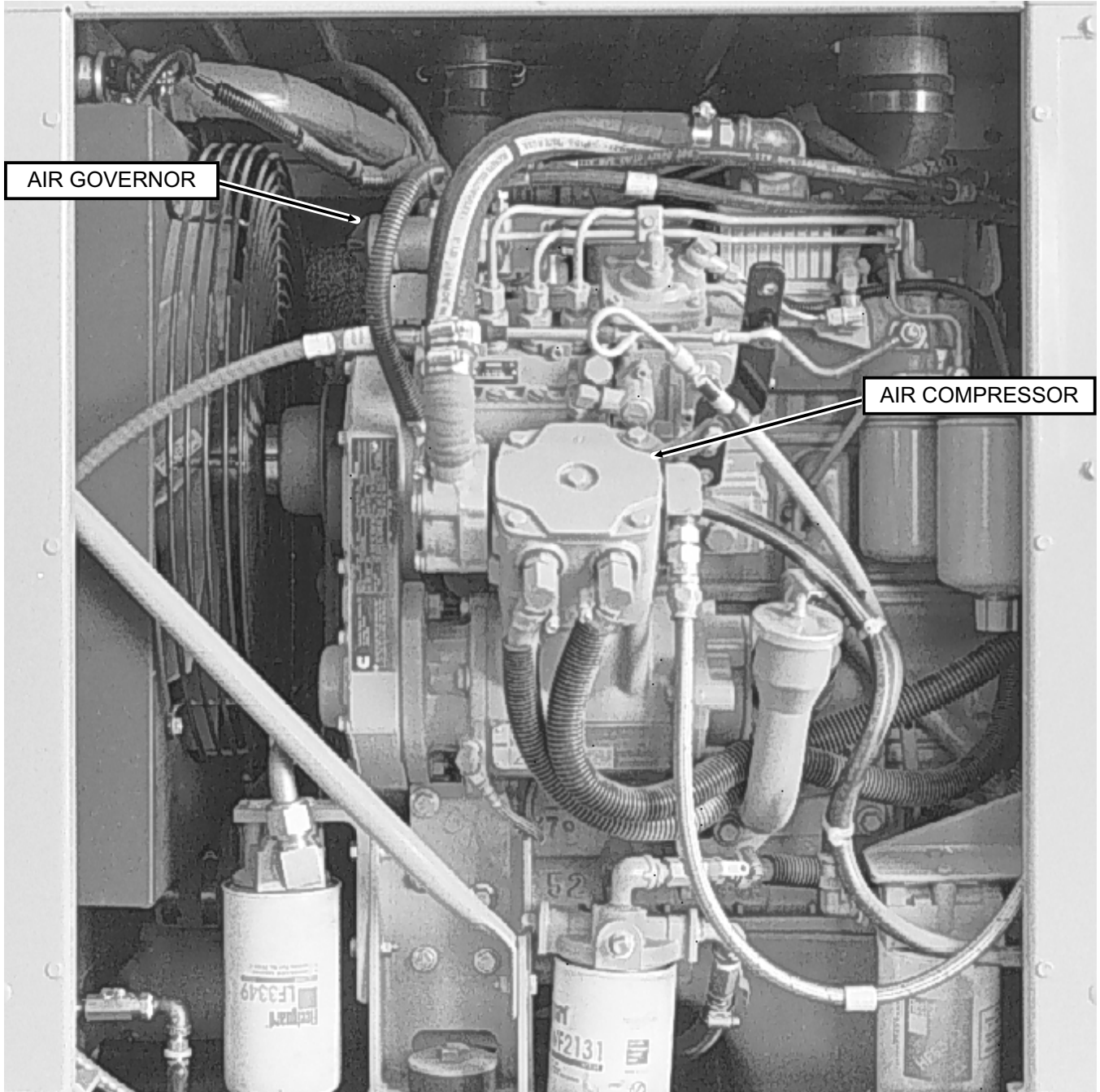
*Note: Each Figure has a corresponding parts list that states whether the component is NEW or EXISTING for assembly.*

5. Tighten all compressor mounting hardware securely.
6. Reconnect the air, cooling and lubrication lines to the new WABCO air compressor. Tighten all connections securely.
7. Start the engine and verify proper operation of the new WABCO air compressor.
8. Check all air, cooling and lubrication connections for leaks.

**SERVICE GROUP INSTALLATION**

98-164

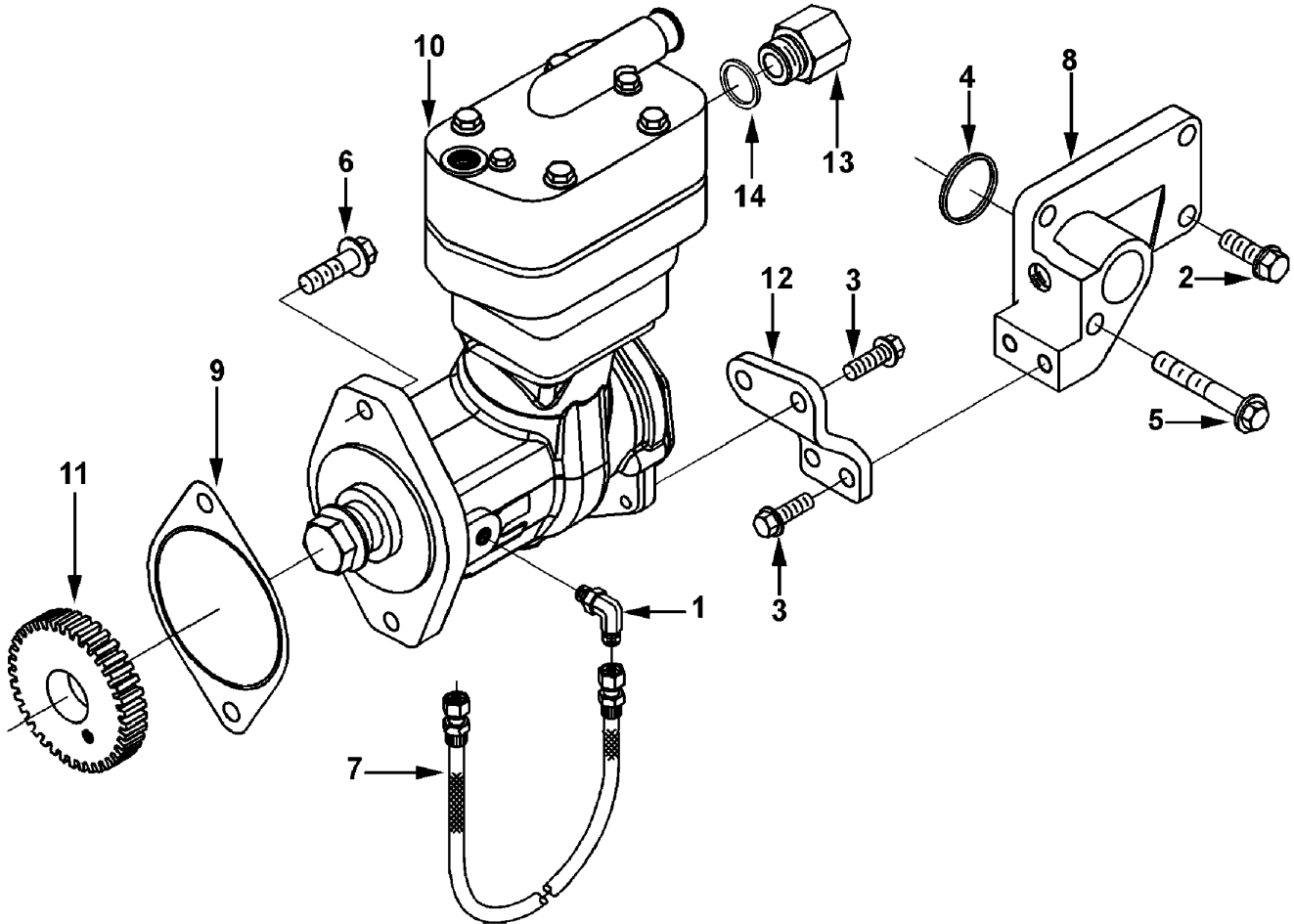
**FIGURE 1**  
**AIR COMPRESSOR MOUNTED ON CUMMINS 4B3.9 ENGINE**



SERVICE GROUP INSTALLATION

CP9338

FIGURE 2  
AIR COMPRESSOR COMPONENTS

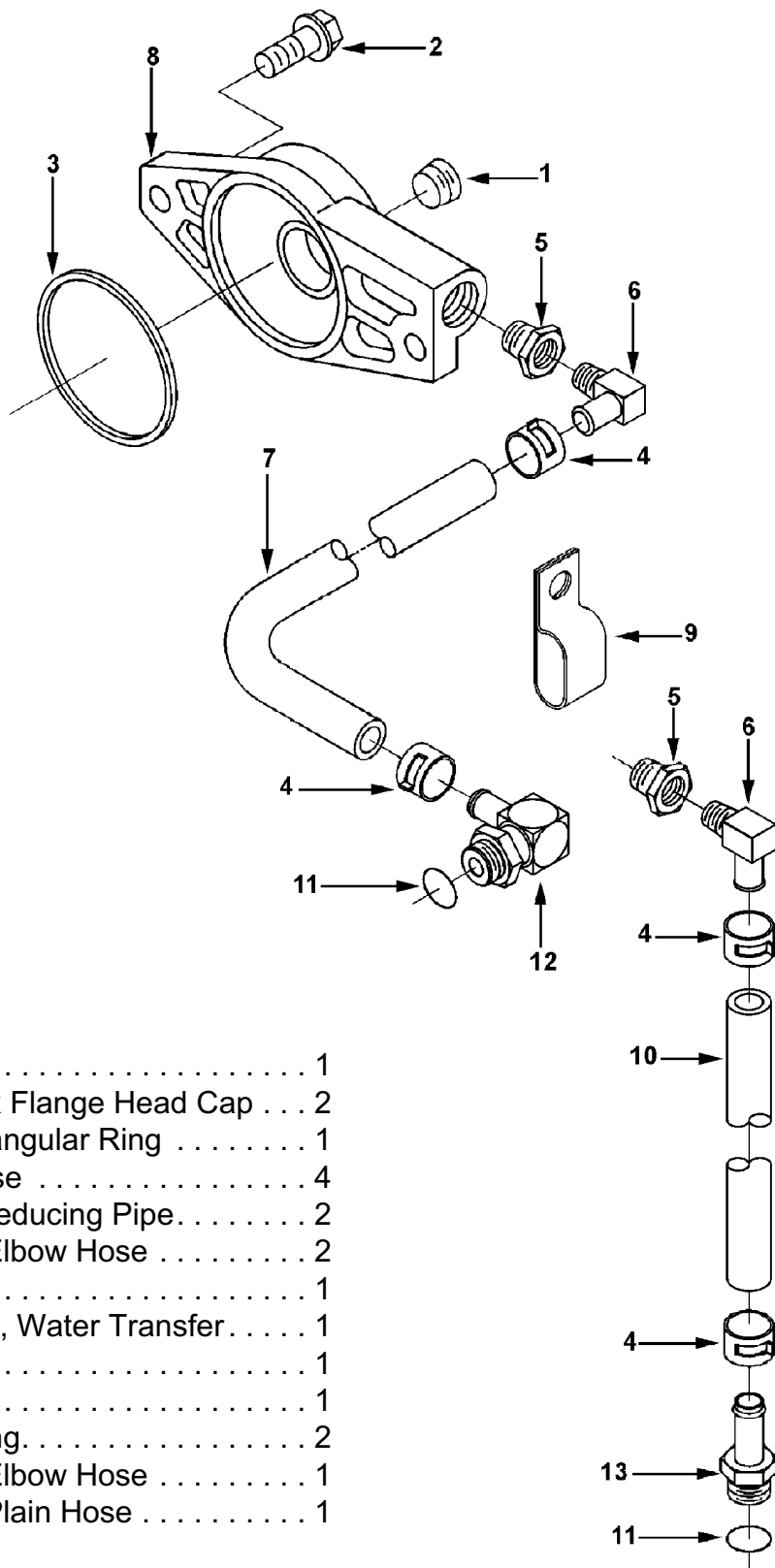


1	NEW	Elbow, Plain . . . . .	1
2	EXISTING	Screw, Hex Flange Head Cap . . .	3
3	NEW	Screw, Hex Flange Head Cap . . .	4
4	EXISTING	Seal, O-Ring. . . . .	1
5	EXISTING	Screw, Hex Flange Head Cap . . .	1
6	EXISTING	Screw, Hex Flange Head Cap . . .	2
7	EXISTING	Hose, Flexible . . . . .	1
8	EXISTING	Connection, Oil Drain. . . . .	1
9	NEW	Gasket, Acc Drive Cover . . . . .	1
10	NEW	Compressor, Air . . . . .	1
11	EXISTING	Gear, Accessory Drive . . . . .	1
12	NEW	Brace, Air Compressor. . . . .	1
13	NEW	Union, Female Adapter . . . . .	1
14	NEW	Seal, O-Ring. . . . .	1

SERVICE GROUP INSTALLATION

CC9174

FIGURE 3  
COOLANT PLUMBING COMPONENTS

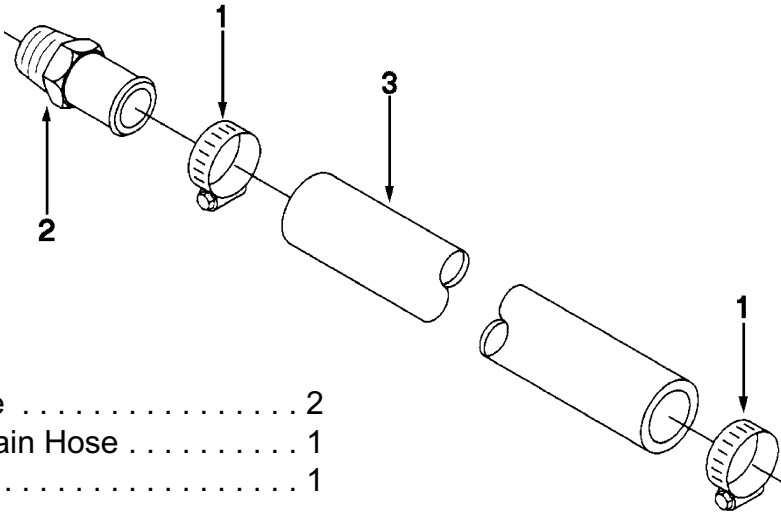


1	EXISTING	Plug, Pipe. . . . .	1
2	EXISTING	Screw, Hex Flange Head Cap . . .	2
3	EXISTING	Seal, Rectangular Ring . . . . .	1
4	EXISTING	Clamp, Hose . . . . .	4
5	EXISTING	Bushing, Reducing Pipe. . . . .	2
6	EXISTING	Coupling, Elbow Hose . . . . .	2
7	EXISTING	Hose, Plain. . . . .	1
8	EXISTING	Connection, Water Transfer. . . . .	1
9	EXISTING	Clip. . . . .	1
10	EXISTING	Hose, Plain. . . . .	1
11	NEW	Seal, O-Ring. . . . .	2
12	NEW	Coupling, Elbow Hose . . . . .	1
13	NEW	Coupling, Plain Hose . . . . .	1

**SERVICE GROUP INSTALLATION**

CI9097

**FIGURE 4  
AIR INLET COMPONENTS**



- |   |          |                            |   |
|---|----------|----------------------------|---|
| 1 | EXISTING | Clamp, Hose .....          | 2 |
| 2 | NEW      | Coupling, Plain Hose ..... | 1 |
| 3 | NEW      | Hose, Plain.....           | 1 |

**SERVICE GROUP PARTS LIST**

ITEM	PART NO	DESCRIPTION	QTY
	196997	WABCO Air Compressor Service Group .....	1

**© 2002 HARSCO TRACK TECHNOLOGIES, HARSCO CORPORATION**

415 North Main Street  
Fairmont, MN  
56031-1837  
Tel: (507) 235-3361  
Fax: (507) 235-7370

2401 Edmund Road, Box 20  
Cayce-West Columbia, SC  
29171-0020  
Tel: (803) 822-9160  
Fax: (803) 822-7471

200 South Jackson Road  
Ludington, MI  
49431  
Tel: (231) 843-3431  
Fax: (231) 843-4830