



Harsco Track Technologies

Harsco

www.harscotrack.com

SERVICE BULLETIN MAINTENANCE OF WAY EQUIPMENT

DATE: 4-5-2002 **BULLETIN NO:** 02-011

TITLE: 2004865 FLOW DIVIDERS CONVERSION GROUP

RATING:

<input type="checkbox"/>	DIRECTIVE (Action Is Required)	<input type="checkbox"/>	ALERT (Potential Problem)
<input type="checkbox"/>	INFORMATION (Action Is Optional)	<input checked="" type="checkbox"/>	PRODUCT IMPROVEMENT (Enhance Product)

PRODUCT SERIES / MODEL: 3300 Tamper

SERIAL NO: All Models

SUMMARY: There have been reported failures of the workhead motor flow dividers currently used on the 3300 Tamper. The hex drive shaft that drives between the sections becomes rounded and will not regulate the flow properly. In an effort to increase product reliability and performance, a new flow divider has been sourced and will be used on all future production machines. The new flow divider has a splined shaft connecting the sections which is more efficient than the hex shaft. All machines may be converted by installation of this Conversion Group part # 2004865.

OPERATIONAL IMPACT: Reduces downtime caused by the flow divider and improves performance.

ACTION: The installation of this Conversion Group requires:

- Disconnecting hydraulic lines and removing the existing flow dividers.
- Installing the new flow dividers and reconnecting the hydraulic lines.

CONTACT: If you have any questions or if we can be of any service, please contact Bill Perry or Doug Budreau at the Ludington, MI. facility, (231) 843-3431.

SAFETY INFORMATION

- **FOLLOW APPLICABLE RAILROAD LOCKOUT - TAGOUT PROCEDURE TO REMOVE ALL ENERGY SOURCES FROM MACHINE. FAILURE TO COMPLY COULD RESULT IN SEVERE BODILY INJURY.**

CONVERSION GROUP INSTALLATION**Existing Flow Dividers Removal - See Figure 1 and Figure 2**

1. Locate the two existing flow dividers on the machine frame.
2. Disconnect all of the hydraulic lines from the adapters in the existing flow dividers and cap the lines.

Note: Be sure to note which hydraulic lines are connected to the flow divider ports for proper re-assembly.

3. Remove the two existing flow dividers from the machine frame. Discard the two existing flow dividers with all of the adapters in the ports and the mounting hardware; they will not be re-used.

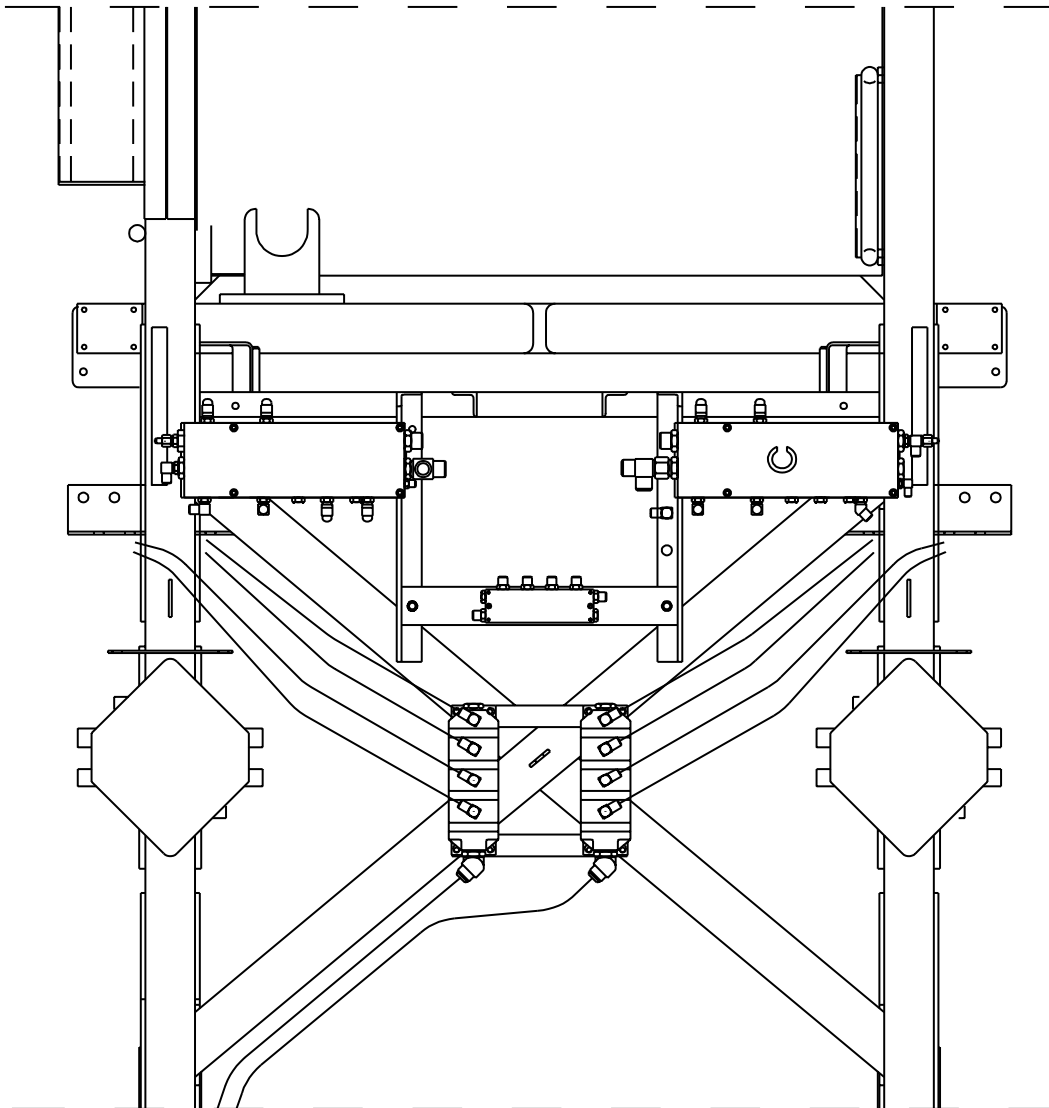
CONVERSION GROUP INSTALLATION**New Flow Dividers Installation** - See Figure 3 and Figure 4

4. Install the two new adapter plates (2) to the existing channels on the machine frame using eight 3/8" x 2" cap screws (3), 3/8" flat washers (4), 3/8" beveled washers (5) and 3/8" lock nuts (6). Tighten all cap screws securely.
5. Install the two new flow dividers (1) to the new adapter plates (2) using eight 3/8" x 3/4" cap screws (9) and 3/8" lock washers (10). Tighten all cap screws securely.
6. Install the two new 90° adapters (8) into the inlet ports on the inside of the new flow dividers (1). Tighten all adapters securely.
7. Install the eight new 45° adapters (7) into the outlet ports on the outside of the new flow dividers (1). Tighten all adapters securely.
8. Reconnect the hydraulic lines to the adapters in the new flow dividers. Tighten all hydraulic connections securely.
9. Start the engine.
10. Start the operation of the workhead vibrators to pressurize the workhead circuits.
11. Check the new flow dividers and all hydraulic connections for leaks.

CONVERSION GROUP INSTALLATION

1004323-1

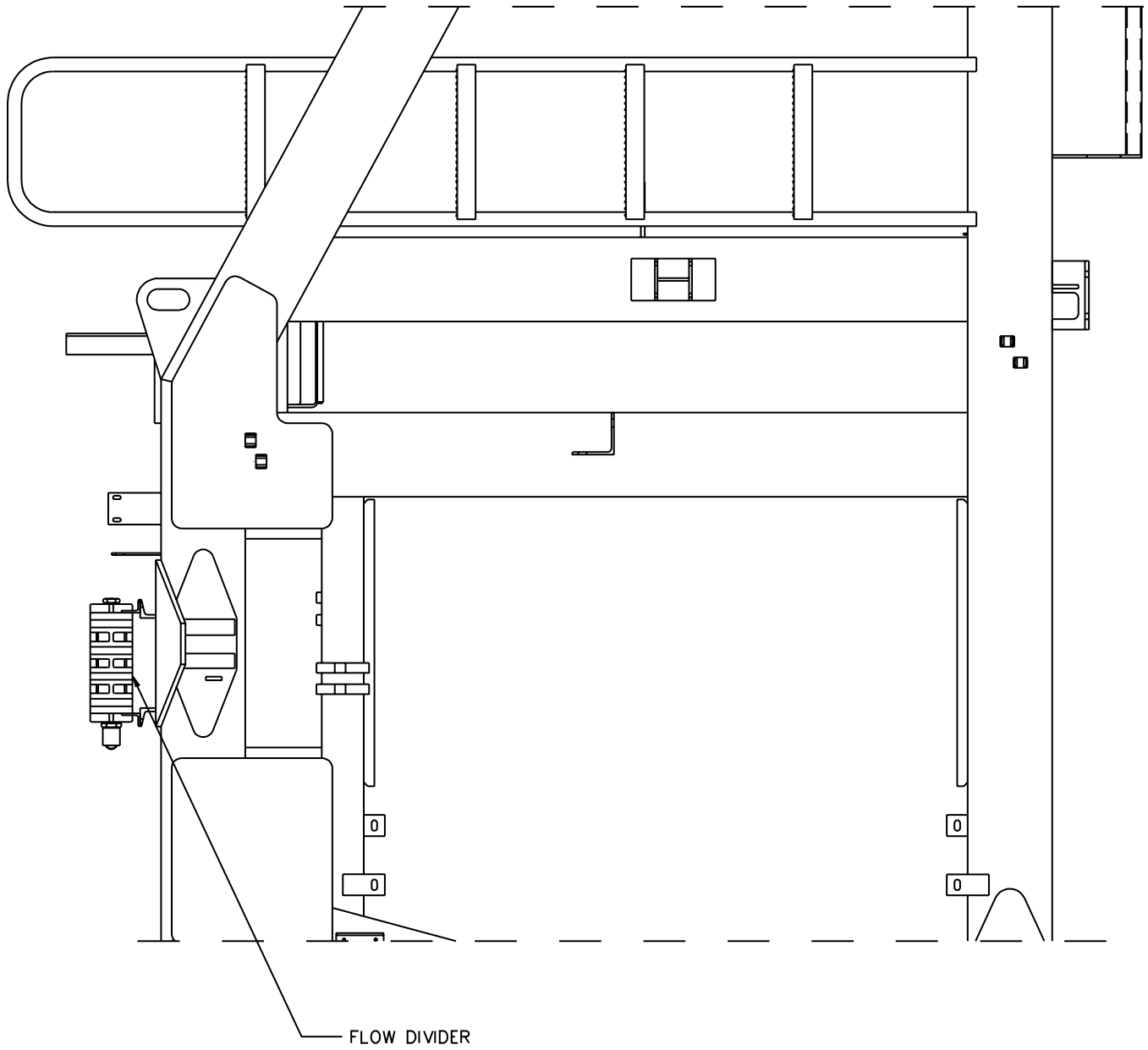
**FIGURE 1
EXISTING FLOW DIVIDERS REMOVAL**



CONVERSION GROUP INSTALLATION

1004323-2

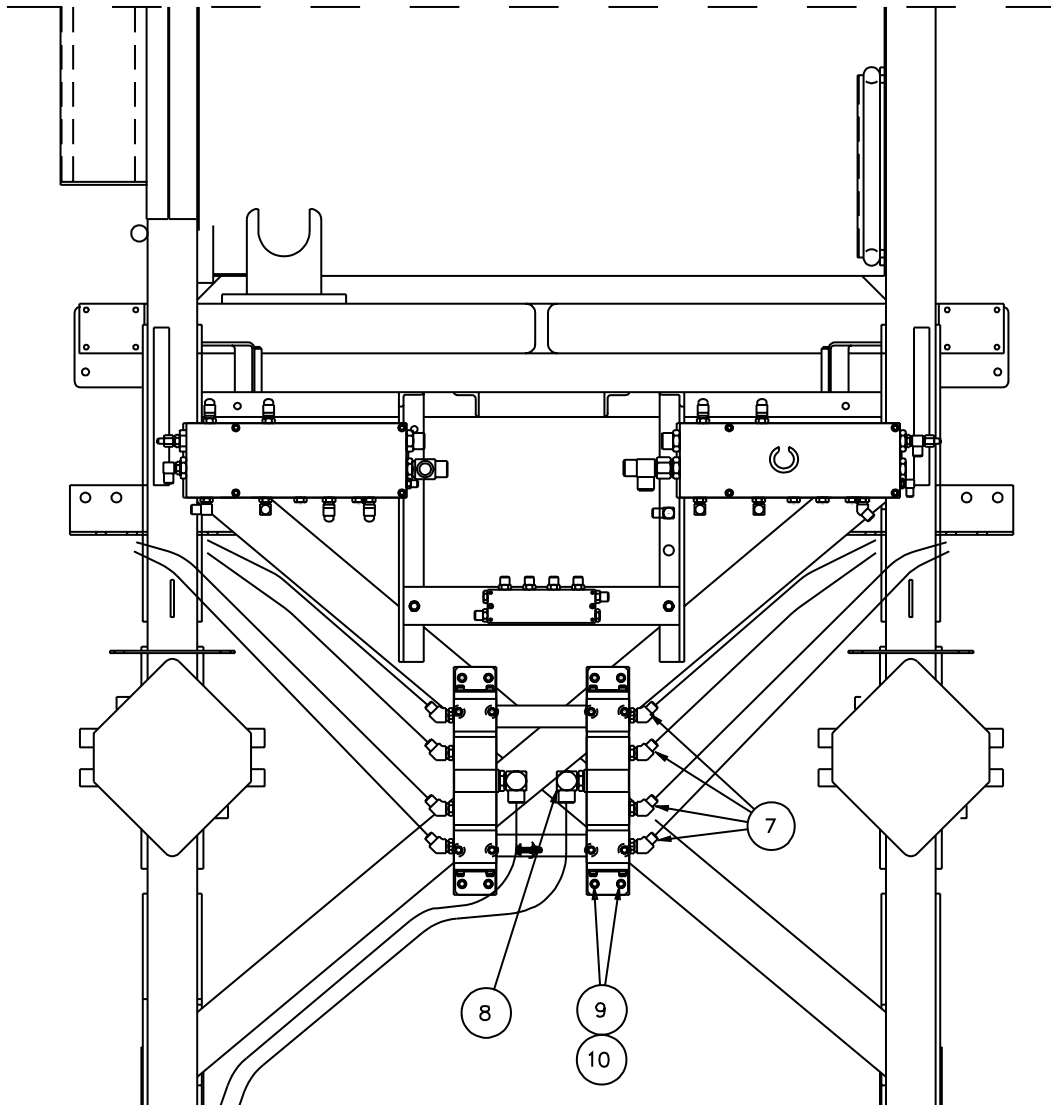
FIGURE 2
EXISTING FLOW DIVIDERS REMOVAL



CONVERSION GROUP INSTALLATION

1004323-3

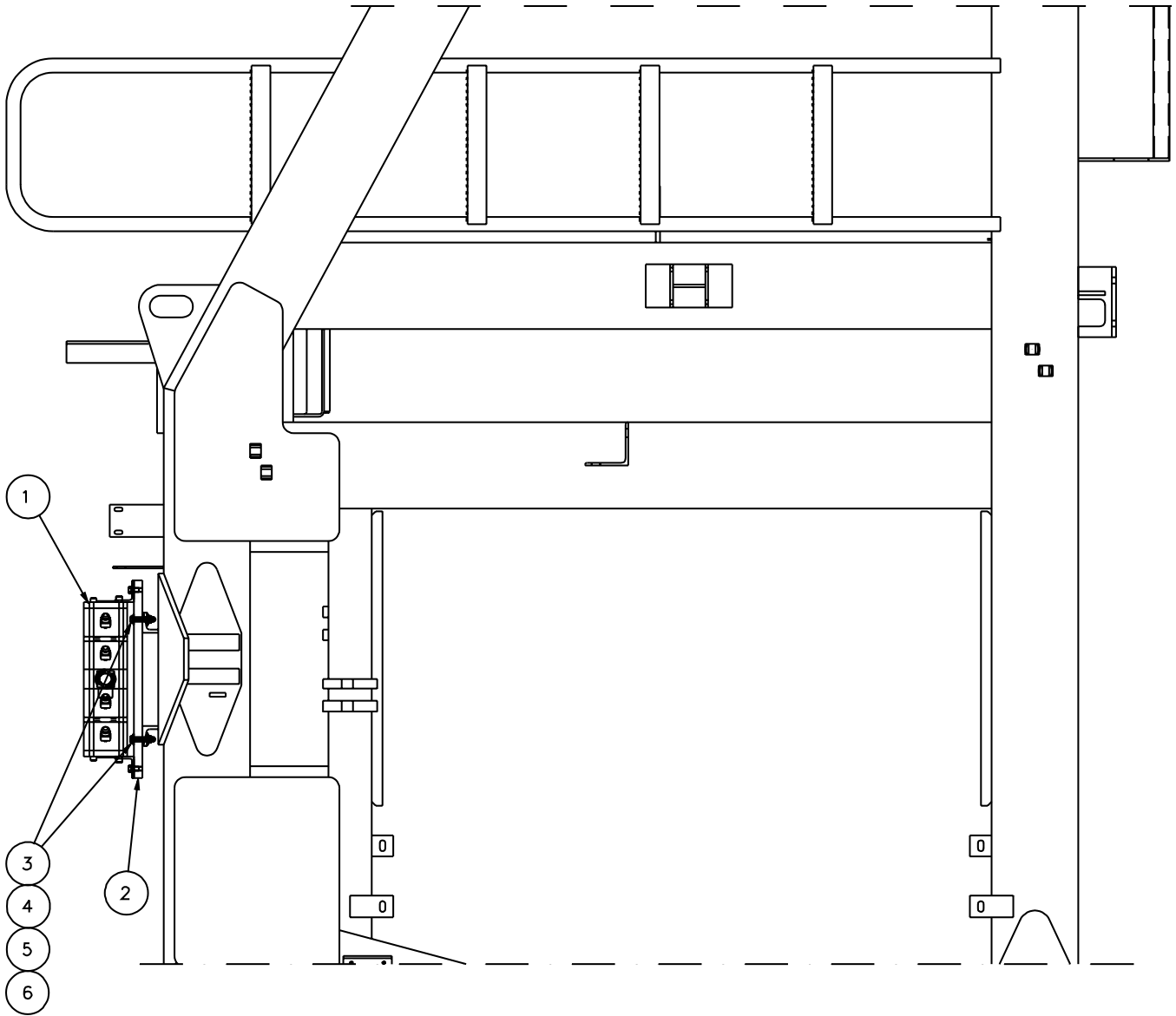
FIGURE 3
NEW FLOW DIVIDERS INSTALLATION



CONVERSION GROUP INSTALLATION

1004323-4

FIGURE 4
NEW FLOW DIVIDERS INSTALLATION



CONVERSION GROUP PARTS LIST

ITEM	PART NO	DESCRIPTION	QTY
	2004865	FLOW DIVIDERS CONVERSION GROUP	1
1	2004589	Flow Divider	2
2	2004843	Adapter Plate	2
3	250010-109	Cap Screw, 3/8"-16 x 2" Hex Head	8
4	150973-4	Flat Washer, 3/8"	16
5	1937	Bevel Washer, 3/8"	8
6	153140-616	Lock Nut, 3/8"-16.	16
7	152390-11	Adapter, 45°	8
8	150167-12	Adapter, 90°	2
9	250010-103	Cap Screw, 3/8"-16 x 3/4" Hex Head	8
10	150988-11	Lock Washer, 3/8"	8

© 2002 HARSCO TRACK TECHNOLOGIES, HARSCO CORPORATION

415 North Main Street
 Fairmont, MN
 56031-1837
 Tel: (507) 235-3361
 Fax: (507) 235-7370

2401 Edmund Road, Box 20
 Cayce-West Columbia, SC
 29171-0020
 Tel: (803) 822-9160
 Fax: (803) 822-7471

200 South Jackson Road
 Ludington, MI
 49431
 Tel: (231) 843-3431
 Fax: (231) 843-4830