



Harsco Track Technologies

Harsco

www.harscotrack.com

SERVICE BULLETIN MAINTENANCE OF WAY EQUIPMENT

DATE: 4-5-2002 **BULLETIN NO:** 02-012

TITLE: RAIL CLAMP ADJUSTMENT SCREW LOCK WASHER SERVICE GROUP

RATING:

<input type="checkbox"/>	DIRECTIVE (Action Is Required)	<input type="checkbox"/>	ALERT (Potential Problem)
<input type="checkbox"/>	INFORMATION (Action Is Optional)	<input checked="" type="checkbox"/>	PRODUCT IMPROVEMENT (Enhance Product)

PRODUCT SERIES / MODEL: 6700S Tamper

SERIAL NO: All Models Serial # 153143 thru 153158

SUMMARY: There have been times when the rail clamp adjustment screw controlling the clamp inward travel have loosened due to repeated impact. A Nord-Lock washer part # 2005242 has been added behind the jam nut on all future production machines leaving the Ludington, MI. facility. The Nord-Lock washers are available for retrofitting in the field.

OPERATIONAL IMPACT: Improves performance.

ACTION: Order Nord-Lock washers part # 2005242 as required. Two lock washers are required per machine.

The installation of this Service Group requires:

- Removing the existing rail clamp adjustment screws.
- Re-installing the existing rail clamp adjustment screws with the Nord-Lock washers.

CONTACT: If you have any questions or if we can be of any service, please contact Bill Perry or Doug Budreau at the Ludington, MI. facility, (231) 843-3431.

SAFETY INFORMATION

- **FOLLOW APPLICABLE RAILROAD LOCKOUT - TAGOUT PROCEDURE TO REMOVE ALL ENERGY SOURCES FROM MACHINE. FAILURE TO COMPLY COULD RESULT IN SEVERE BODILY INJURY.**

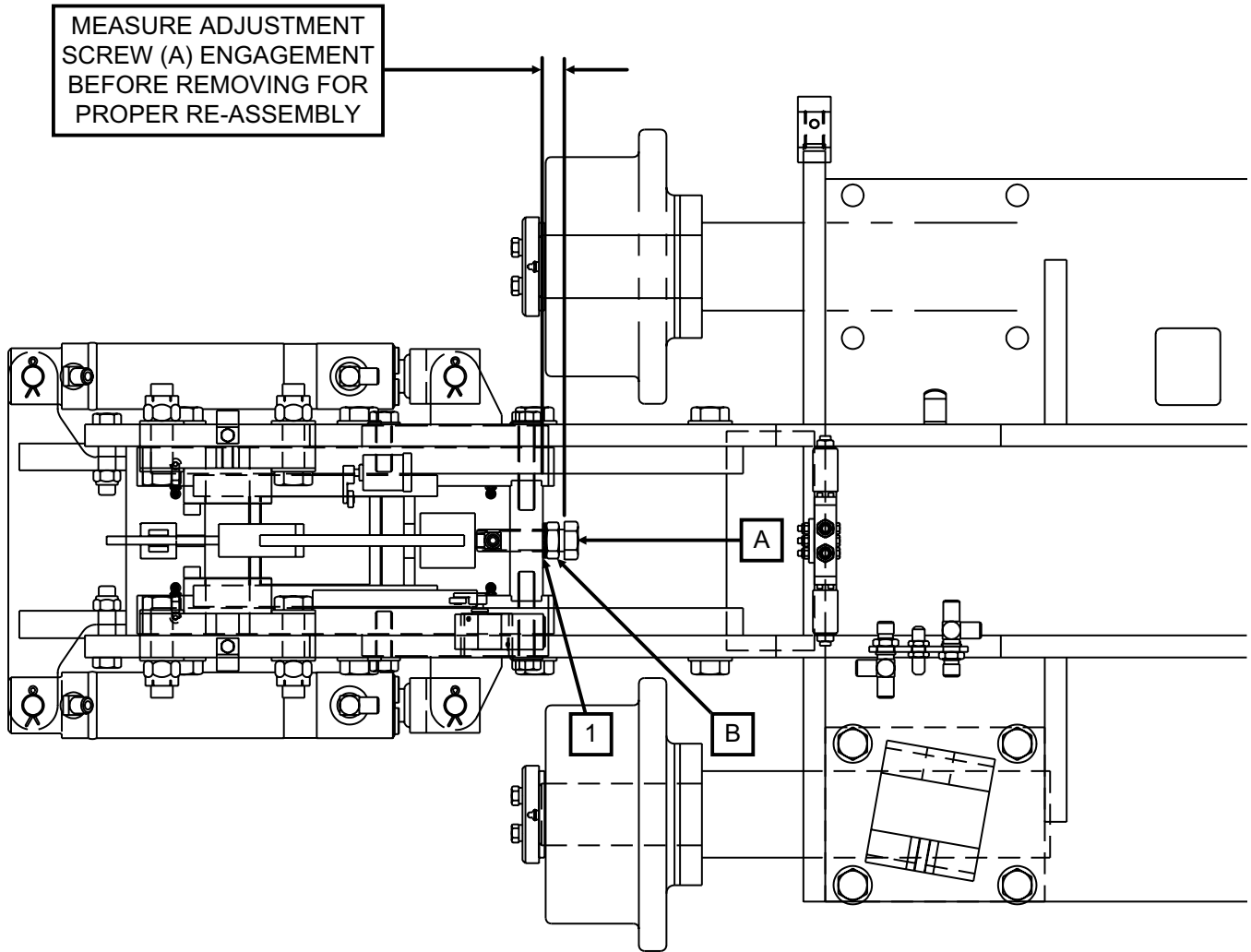
SERVICE GROUP INSTALLATION - See Figure 1

1. Locate the existing rail clamp adjustment screws (A) on both sides of the clamp table.
2. With the rail clamps retracted, measure the position of the adjustment screw (A) engagement so the screw can be reset to the existing setting upon re-installation.
3. Loosen the jam nut (B). Then remove the adjustment screw (A) and jam nut (B).
4. Insert a Nord-Lock washer (1) on the end of the adjustment screw (A) so it is against the jam nut (B).
5. Re-install the adjustment screw (A). Adjust the screw (A) to the measurement of engagement that was measured in Step 2. Then torque the jam nut (B) to 500 ft-lbs.
6. Repeat procedure to install the Nord-Lock washer on the adjustment screw on the other side of the clamp table.

SERVICE GROUP INSTALLATION

1003849-1

FIGURE 1
RAIL CLAMP TABLE



SERVICE GROUP PARTS LIST

ITEM	PART NO	DESCRIPTION	QTY
1	2005242	Nord-Lock Washer	2

© 2002 HARSCO TRACK TECHNOLOGIES, HARSCO CORPORATION

415 North Main Street
Fairmont, MN
56031-1837
Tel: (507) 235-3361
Fax: (507) 235-7370

2401 Edmund Road, Box 20
Cayce-West Columbia, SC
29171-0020
Tel: (803) 822-9160
Fax: (803) 822-7471

200 South Jackson Road
Ludington, MI
49431
Tel: (231) 843-3431
Fax: (231) 843-4830