



Harsco Track Technologies

Harsco

www.harscotrack.com

SERVICE BULLETIN MAINTENANCE OF WAY EQUIPMENT

DATE: 7-10-2003 **BULLETIN NO:** 03-007

TITLE: H6329WAA SPIKE TUMBLER ROLLER KIT

RATING:

<input type="checkbox"/>	DIRECTIVE (Action Is Required)	<input type="checkbox"/>	ALERT (Potential Problem)
<input type="checkbox"/>	INFORMATION (Action Is Optional)	<input checked="" type="checkbox"/>	PRODUCT IMPROVEMENT (Enhance Product)

PRODUCT SERIES / MODEL: W139 Series A1 Spike Reclaimer
Holley Spike Reclaimer

SERIAL NO: All W139 Models A1 with Spike Tumbler System
All Holley Models with Spike Tumbler System

SUMMARY: On earlier manufactured Spike Reclaimers, some of the machines were equipped with spike tumblers. These tumblers were supported by small cam followers and would roll while the drum was rotating. These cam followers would wear out prematurely and would also wear grooves in the tumbler drum.

OPERATIONAL IMPACT: A kit has been designed to replace the existing smaller cam followers with larger rollers. These new rollers will provide a longer service life and also help to prevent excessive wear on the tumbler drum.

ACTION: The installation of this kit involves welding new roller brackets on the machine frame, removing the existing rollers and installing the new rollers. Order one part # H6329WAA Spike Tumbler Roller Kit per machine.

CONTACT: If you have any questions or if we can be of any service, please contact the Service Department at the Columbia, SC. facility, (803) 822-9160.

SAFETY INFORMATION

- **FOLLOW APPLICABLE RAILROAD LOCKOUT - TAGOUT PROCEDURE TO REMOVE ALL ENERGY SOURCES FROM MACHINE. FAILURE TO COMPLY COULD RESULT IN SEVERE BODILY INJURY.**

INSTALLATION - See Figure 1, Figure 2 and Figure 3

1. Locate the existing cam followers on the spike tumbler on the machine.
2. DO NOT REMOVE any of the existing cam followers at this time.
3. Assemble the roller brackets (1), rollers (2), pins (4), tubing (5), flat washers (10) and cotter pins (8). With the existing cam followers still in position supporting the tumbler, position the new roller bracket assemblies up tight against the tumbler so the circumference of the new rollers and tumbler come into solid contact. Tack weld the roller assemblies in this position to the top of the frame tube as shown.
4. After tack welding the new rollers assemblies in place, remove the rollers (2), pins (4), tubing (5), flat washers (10) and cotter pins (8) from the roller brackets (1) to prevent weld spatter from damaging the rollers (2). Then weld the roller brackets (1) securely to the top of the frame tube as shown.
5. After welding, re-assemble the rollers (2), pins (4), tubing (5), flat washers (10) and cotter pins (8) to the roller brackets (1) inserting the pins (1) so they are just flush to the outside face of the bracket (1) facing the existing cam followers.

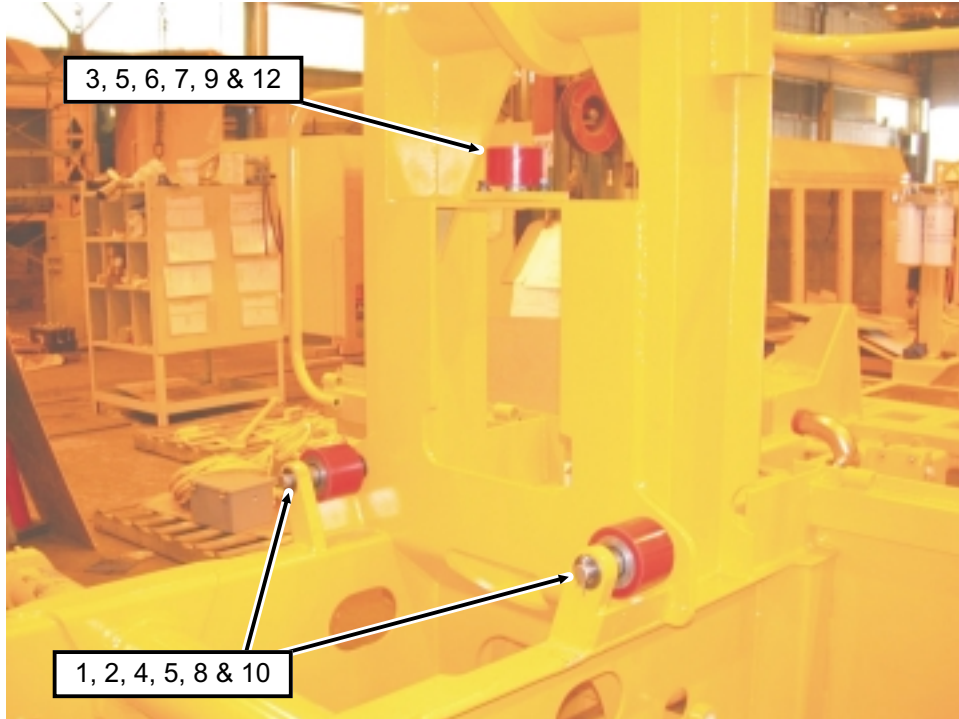
Note: The pins (2) cannot be fully inserted through the new roller brackets (1) and secured until the existing cam followers are removed in a later Step.

6. Weld the plates (11, 12) and gussets (13) to the machine frame as shown. Assemble the rollers (3), tubing (5), retaining rings (7), cap screws (9) to the roller adjusting brackets (6). Position the roller adjusting brackets (6) so the rollers are solidly against the ends of the tumbler. Tighten the cap screws (9) in the roller adjusting brackets (6) securely.
7. Remove the existing cam followers. Then fully insert the pins (4) through the new roller brackets (1) and secure with flat washers (10) and cotter pins (8).

INSTALLATION

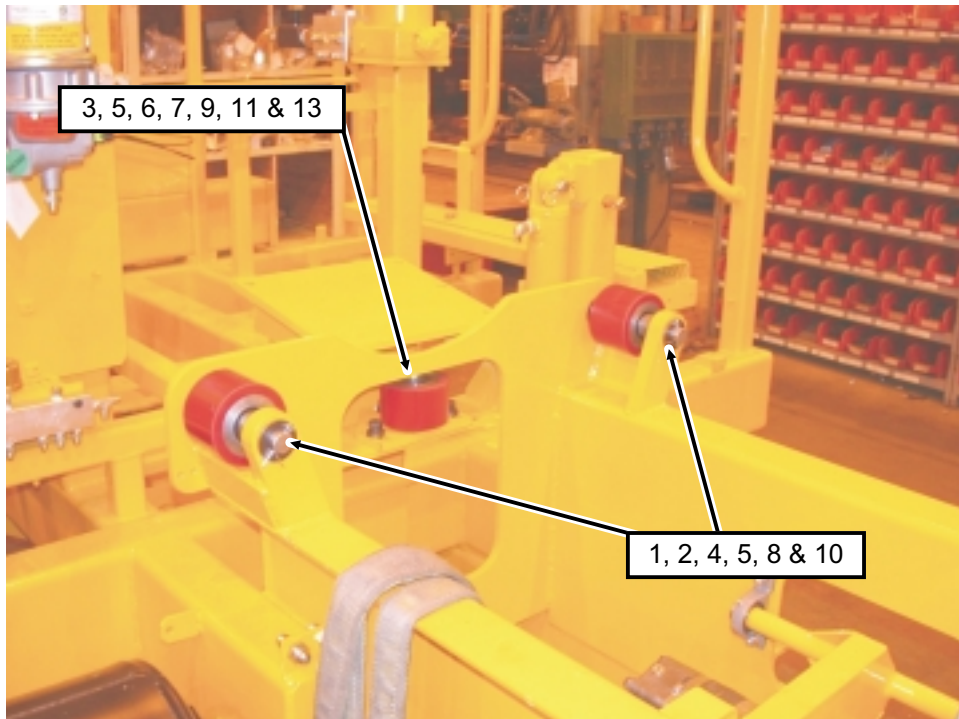
03-221

FIGURE 1
SPIKE TUMBLER FRONT ROLLERS INSTALLATION



03-222

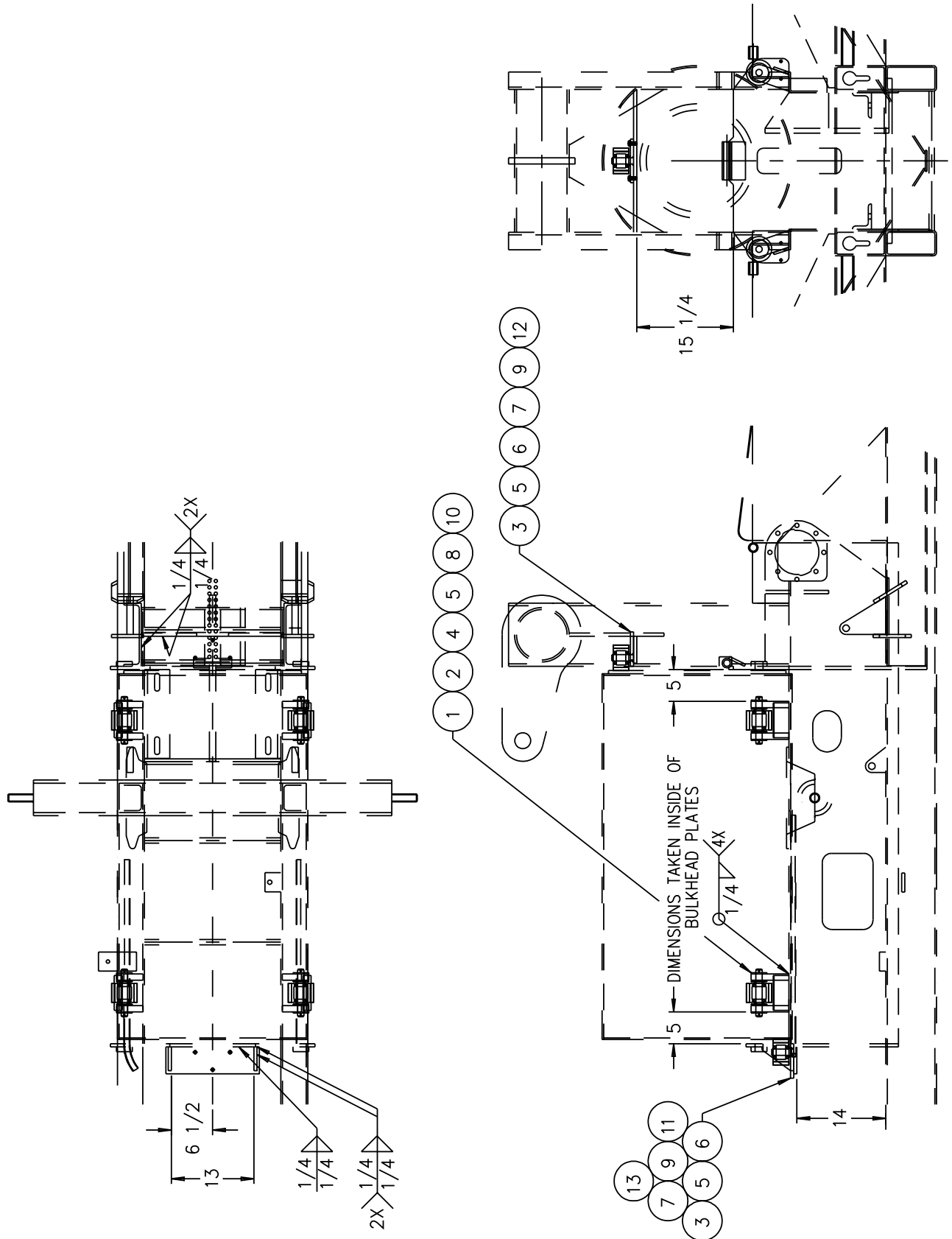
FIGURE 2
SPIKE TUMBLER REAR ROLLERS INSTALLATION



INSTALLATION

H6329WAA-2

FIGURE 3
SPIKE TUMBLER ROLLERS INSTALLATION



PARTS LIST

Note: See Figure 3 for Item Numbers. The quantities listed are for one machine.

ITEM	PART NO	DESCRIPTION	QTY
	H6329WAA	SPIKE TUMBLER ROLLER KIT	1
1	H6328XAA	Roller Bracket Weldment	4
2	G4007Y01	Polyurethane Roller	4
3	G4007Y02	Polyurethane Roller	2
4	D5507T47	Pin, 1"	4
5	B8101T48	Tubing, 1-1/2"	10
6	G4025YAA	Roller Adjusting Bracket	2
7	0-3013001-0-02	Retaining Ring, 1"	2
8	A0068025	Cotter Pin, 3/16" x 2"	8
9	A0036063	Hex Head Cap Screw, 3/8"-16 x 1"	6
10	A0059010	Flat Washer, 1"	16
11	G3282Y01	Plate	1
12	G3282Y02	Plate	1
13	D8513T28	Gusset, 1/2"	2

© 2003 HARSCO TRACK TECHNOLOGIES, HARSCO CORPORATION

415 North Main Street
Fairmont, MN
56031-1837
Tel: (507) 235-3361
Fax: (507) 235-7370

2401 Edmund Road, Box 20
Cayce-West Columbia, SC
29171-0020
Tel: (803) 822-9160
Fax: (803) 822-7471

200 South Jackson Road
Ludington, MI
49431
Tel: (231) 843-3431
Fax: (231) 843-4830

Printed In U.S.A.