



Harsco Track Technologies

Harsco

www.harscotrack.com

SERVICE BULLETIN MAINTENANCE OF WAY EQUIPMENT

DATE: 8-5-2003 **BULLETIN NO:** 03-014

TITLE: SOLID STATE ENGINE SOLENOID MOUNTING

RATING:

<input type="checkbox"/> DIRECTIVE (Action Is Required)	<input checked="" type="checkbox"/> ALERT (Potential Problem)
<input type="checkbox"/> INFORMATION (Action Is Optional)	<input type="checkbox"/> PRODUCT IMPROVEMENT (Enhance Product)

PRODUCT SERIES / MODEL: 6700S Tampers

SERIAL NO: All Models Serial # 153045 and Higher

SUMMARY: There have been several instances where the mounting feet of the solid state engine solenoid have broken off leaving the solenoid dangling and the wires loose. It is felt that this may be due to the vertical mounting position of the solenoid on the side of the angle bracket attached to the engine mount. It has been determined that a better mounting position would be to attach the angle bracket to the side of the pump drive and mount the solenoid horizontally so it is resting on the top of the angle bracket.

OPERATIONAL IMPACT: To improve machine reliability and extend the service life of the solid state engine solenoid by remounting it in a horizontal position.

ACTION: The remounting of the solenoid requires removing the solenoid and bracket from its original mounting location on the engine mount, adding two new mounting holes in the bracket, remounting the bracket in a new location on the side of the pump drive, and then re-installing the solenoid on the bracket.

CONTACT: If you have any questions or if we can be of any service, please contact Bill Perry at the Ludington, MI. facility, (231) 843-3431.

SAFETY INFORMATION

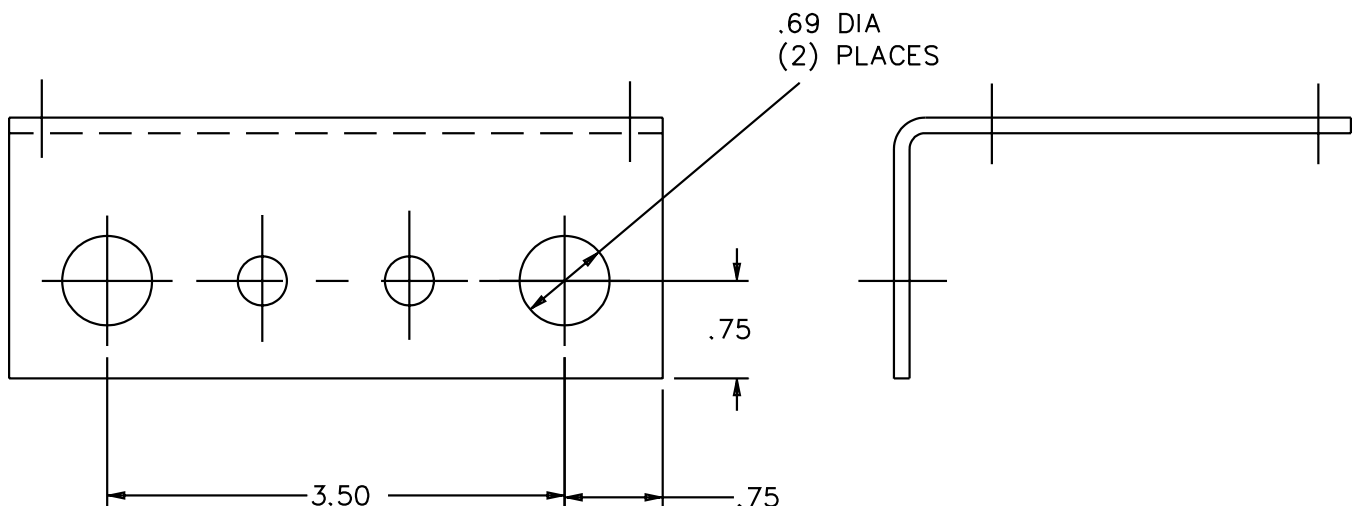


- FOLLOW APPLICABLE RAILROAD LOCKOUT - TAGOUT PROCEDURE TO REMOVE ALL ENERGY SOURCES FROM MACHINE. FAILURE TO COMPLY COULD RESULT IN SEVERE BODILY INJURY.

INSTALLATION - See Figure 1, Figure 2 and Figure 3

1. MAKE SURE all battery switches are turned OFF.
2. It is not necessary to disconnect the electrical wires from the solenoid (A).
3. Remove the four cap screws and nuts (C) that secure the solenoid (A) to the angle bracket (B).
4. Remove the two cap screws and nuts (D) that secure the angle bracket (B) and the electrical ground wires to the engine mounting bracket.
5. Re-install the electrical ground wires, with the exception of the solenoid ground wire, to the engine mounting bracket re-using one cap screw and nut (D).
6. Re-work the angle bracket (B) by adding two 11/16 inch diameter holes per the dimensions shown in Figure 1.
7. Mount the angle bracket (B) to the two bottom holes on the side of the pump drive as shown in Figure 3 using two 5/8"-11 x 1" long cap screws (1).
8. Install the solenoid (A) to the angle bracket (B) re-using the four cap screws and nuts (C). BE SURE to install the solenoid ground wire under one of the four screws (C).
9. Re-route the electrical wires for a neat installation.

FIGURE 1
ANGLE BRACKET RE-WORK



INSTALLATION

FIGURE 2
EXISTING MOUNTING OF SOLENOID AND BRACKET

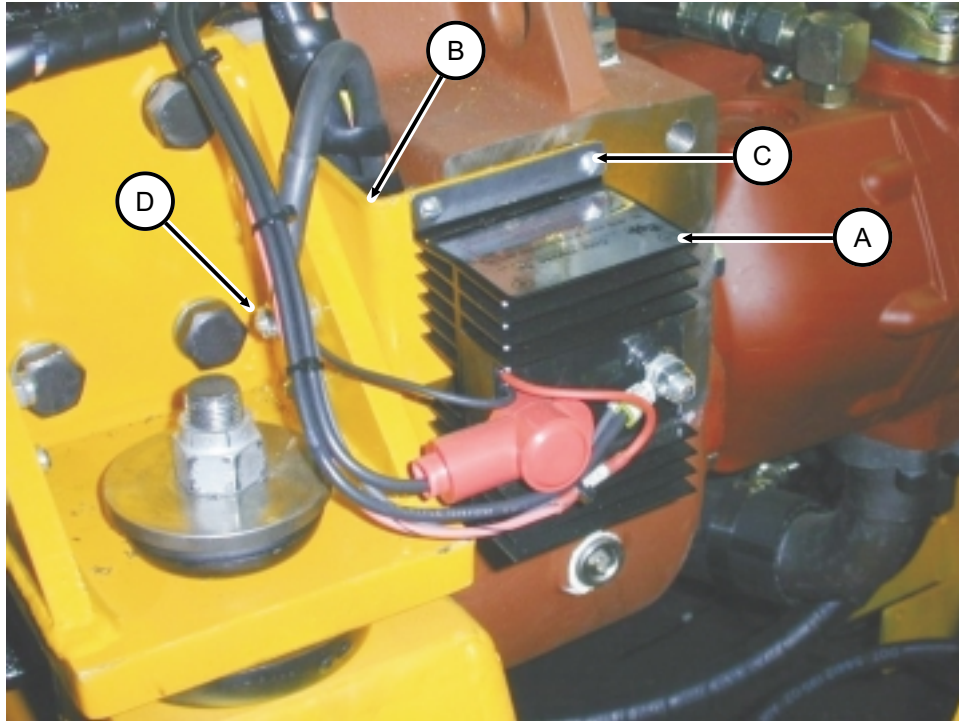
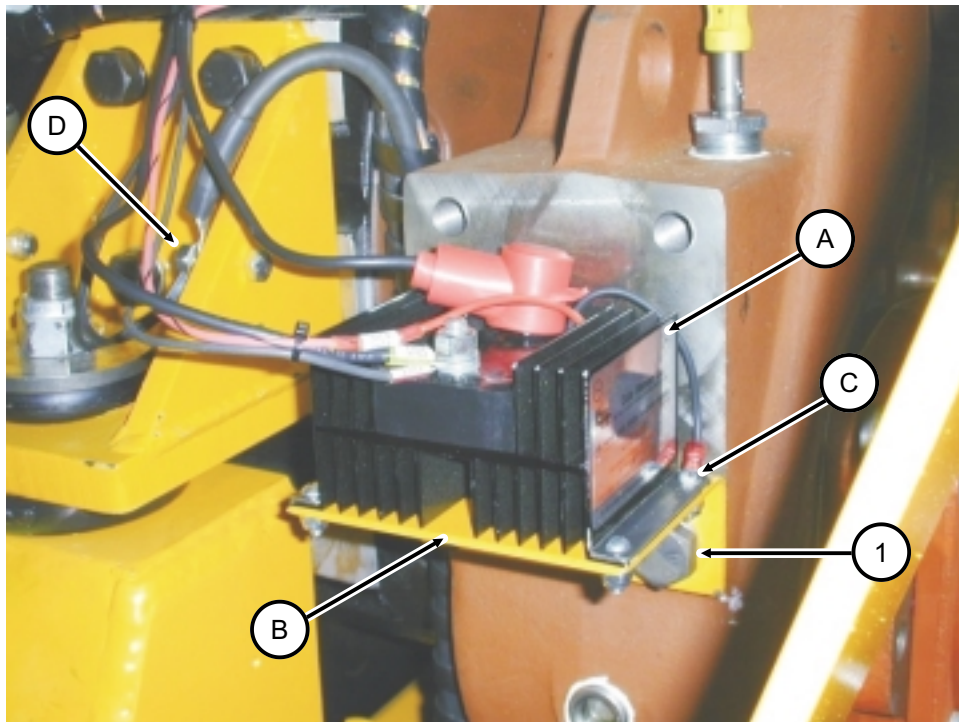


FIGURE 3
NEW MOUNTING OF SOLENOID AND BRACKET



PARTS LIST

Note: See Figure 3 for Item Number.

ITEM	PART NO	DESCRIPTION	QTY
1	250010-337	Cap Screw, 5/8"-11 x 1" Long Hex Head	2

© 2003 HARSCO TRACK TECHNOLOGIES, HARSCO CORPORATION

415 North Main Street
Fairmont, MN
56031-1837
Tel: (507) 235-3361
Fax: (507) 235-7370

2401 Edmund Road, Box 20
Cayce-West Columbia, SC
29171-0020
Tel: (803) 822-9160
Fax: (803) 822-7471

200 South Jackson Road
Ludington, MI
49431
Tel: (231) 843-3431
Fax: (231) 843-4830