



# Harsco Track Technologies

Harsco

www.harscotrack.com

---

## SERVICE BULLETIN MAINTENANCE OF WAY EQUIPMENT

---

**DATE:** 8-28-2003 **BULLETIN NO:** 03-016

**TITLE:** OIL COOLER RELOCATION

**RATING:**

<input type="checkbox"/>	<b>DIRECTIVE</b> (Action Is Required)	<input type="checkbox"/>	<b>ALERT</b> (Potential Problem)
<input type="checkbox"/>	<b>INFORMATION</b> (Action Is Optional)	<input checked="" type="checkbox"/>	<b>PRODUCT IMPROVEMENT</b> (Enhance Product)

**PRODUCT SERIES / MODEL:** 6700S Tampers

**SERIAL NO:** All Models

**SUMMARY:** A conversion has been developed to relocate the oil cooler from the top of the truss above the workhead to the front deck of the machine. This conversion provides a more accessible location for maintaining the oil cooler and provides better air flow across the machine away from the workhead components.

**OPERATIONAL IMPACT:** The relocation of the oil cooler improves serviceability and provides better air flow.

**ACTION:** Order and install conversion #2006155 per the drawings and instructions. The installation of this conversion involves welding new mounting brackets and clamps on the machine frame, cutting a hole in the machine deck, disconnecting the existing hydraulic lines to oil cooler, relocating the existing oil cooler in a new location, and connecting new hydraulic lines to oil cooler.

**CONTACT:** If you have any questions or if we can be of any service, please contact the Service Department at the Columbia, SC. facility, (803) 822-9160.

**SAFETY INFORMATION**

- **FOLLOW APPLICABLE RAILROAD LOCKOUT - TAGOUT PROCEDURE TO REMOVE ALL ENERGY SOURCES FROM MACHINE. FAILURE TO COMPLY COULD RESULT IN SEVERE BODILY INJURY.**

**OIL COOLER RELOCATION**

- See Drawing #2006155 Sheet #1, Sheet #2 and Sheet #3

1. When disconnecting and/or removing hydraulic lines and fittings, be sure to catch all hydraulic fluid in a leak-proof container.
2. Weld the new mounting brackets and clamps on the machine frame per the dimensions and weld symbols as shown on Sheet #1 and Sheet #3.
3. Cut a hole in the machine deck as shown on Sheet #1. Be sure to remove all burrs, sharp edges, etc.
4. Disconnect the existing hydraulic lines to oil cooler. Relocate the existing oil cooler in the new location as shown on Sheet #1.
5. Connect the new hydraulic lines to the relocated existing oil cooler as shown on Sheet #2. Be sure to tighten all hydraulic lines and fittings securely.

**CHECK FOR LEAKS**

6. Make sure the hydraulic reservoir is filled with hydraulic fluid to the recommended operating level.
7. Start the machine engine and pressurize the oil cooler hydraulic lines.
8. Check all new hydraulic lines and fittings for hydraulic leaks using cardboard, wood, etc. **DO NOT USE YOUR BARE HANDS.**

**PARTS LIST**

*Note: The quantities listed are for one machine.*

*See Drawing #2006155 Sheet #1, Sheet #2 and Sheet #3.*

ITEM	PART NO	DESCRIPTION	QTY
1	2006156	Tapping Pad . . . . .	2
2	2006153	Oil Cooler Support - RH . . . . .	1
3	2006157	Oil Cooler Support - LH. . . . .	1
4	5127	Terminal . . . . .	4
5	150988-15	Lock Washer, .62" Regular (High Collar) . . . . .	4
6	2006154	Baffle Strip . . . . .	2
7	250010-80	Cap Screw, Hex Head, .31"-24 x 1.00" LG . . . . .	12
8	5837	Adapter - 45°, 24 NPT x 24 JIC . . . . .	1
9	2003808	155589-1 Clamp Rail x 6.00" . . . . .	3
10	213786-10	Anchor Channel, 4.50" . . . . .	2
11	213786-23	Anchor Channel, 8.75" . . . . .	1
12	157713-1	Trim Seal . . . . .	12"
13	250232-9	Clamp Assembly. . . . .	6
14	151003-1	Formed Channel. . . . .	4"
15	213786-20	Anchor Channel, 7.25" . . . . .	1
16	213786-5	Anchor Channel, 3.25" . . . . .	2
17	213786-8	Anchor Channel, 4.00" . . . . .	2
18	218690-1	Bulkhead Plate . . . . .	1
19	150122-8	Tee . . . . .	1
20	153728-3	Clamp Assembly. . . . .	2
21	153728-4	Clamp Assembly. . . . .	6
22	153728-6	Clamp Assembly. . . . .	6
23	153728-13	Clamp Assembly. . . . .	4
24	2007054	Tube Assembly, .75" Dia. . . . .	1
25	313037-21	Straight Tubing Assembly, .50". . . . .	1
26	2003249	Straight Tubing Assembly. . . . .	1
27	150201-8	Adapter - Union, 12 JIC x 12 JIC . . . . .	1
28	150201-6	Adapter - Union, 8 JIC x 8 JIC . . . . .	1
29	150201-9	Adapter - Union, 6 JIC x 6JIC . . . . .	1
30	7095	Adapter. . . . .	1
31	7094	Adapter. . . . .	1
32	150130-5	Adapter - 90° Union, 6 JIC x 6 JIC . . . . .	1
33	153728-9	Clamp Assembly. . . . .	3
34	313727-23	Tube Assembly. . . . .	2
35	150201-13	Adapter - Union, 24 JIC x 24 JIC . . . . .	4
36	2007038	Hose Assembly. . . . .	1
37	2001033	Hose Assembly. . . . .	1
38	153728-7	Clamp Assembly. . . . .	2
39	601350-020	Hose Assembly. . . . .	1

**PARTS LIST**

*Note: The quantities listed are for one machine.  
See Drawing #2006155 Sheet #1, Sheet #2 and Sheet #3.*

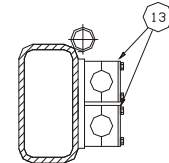
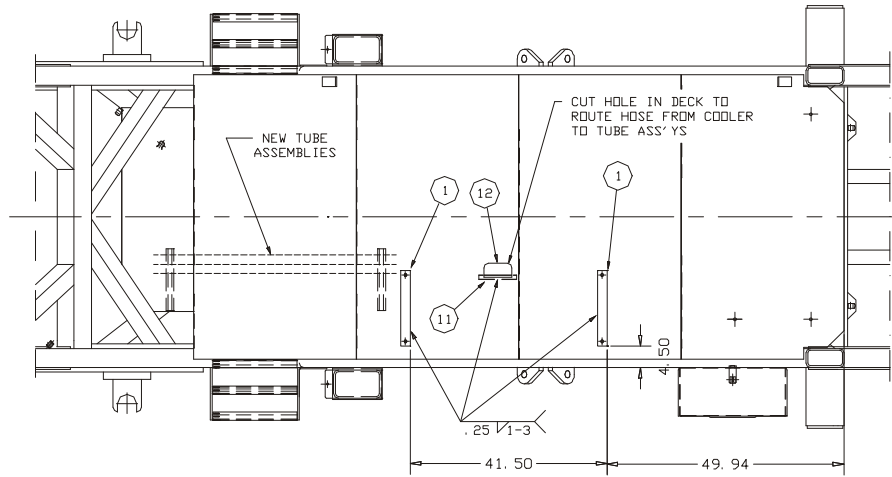
ITEM	PART NO	DESCRIPTION	QTY
40	600076-112	Hose Assembly.....	1
41	2007040	Hose Assembly.....	1
42	2007041	Hose Assembly.....	1
43	2007039	Hose Assembly.....	1
44	2003362	Hose Assembly.....	1
45	601525-018	Hose Assembly.....	1
46	601476-022	Hose Assembly.....	1
47	601055-023	Hose Assembly.....	1
48	3862	Cap Nut.....	1
49	2006155-DWG	Copy Of Drawing.....	1

**© 2003 HARSCO TRACK TECHNOLOGIES, HARSCO CORPORATION**

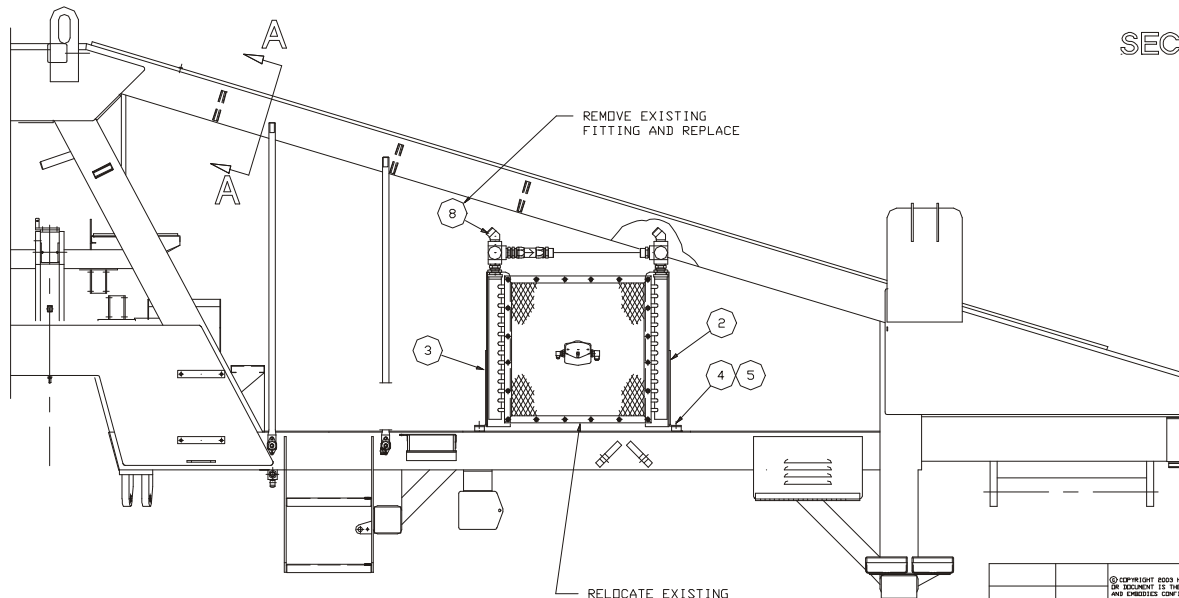
415 North Main Street  
Fairmont, MN  
56031-1837  
Tel: (507) 235-3361  
Fax: (507) 235-7370

2401 Edmund Road, Box 20  
Cayce-West Columbia, SC  
29171-0020  
Tel: (803) 822-9160  
Fax: (803) 822-7471

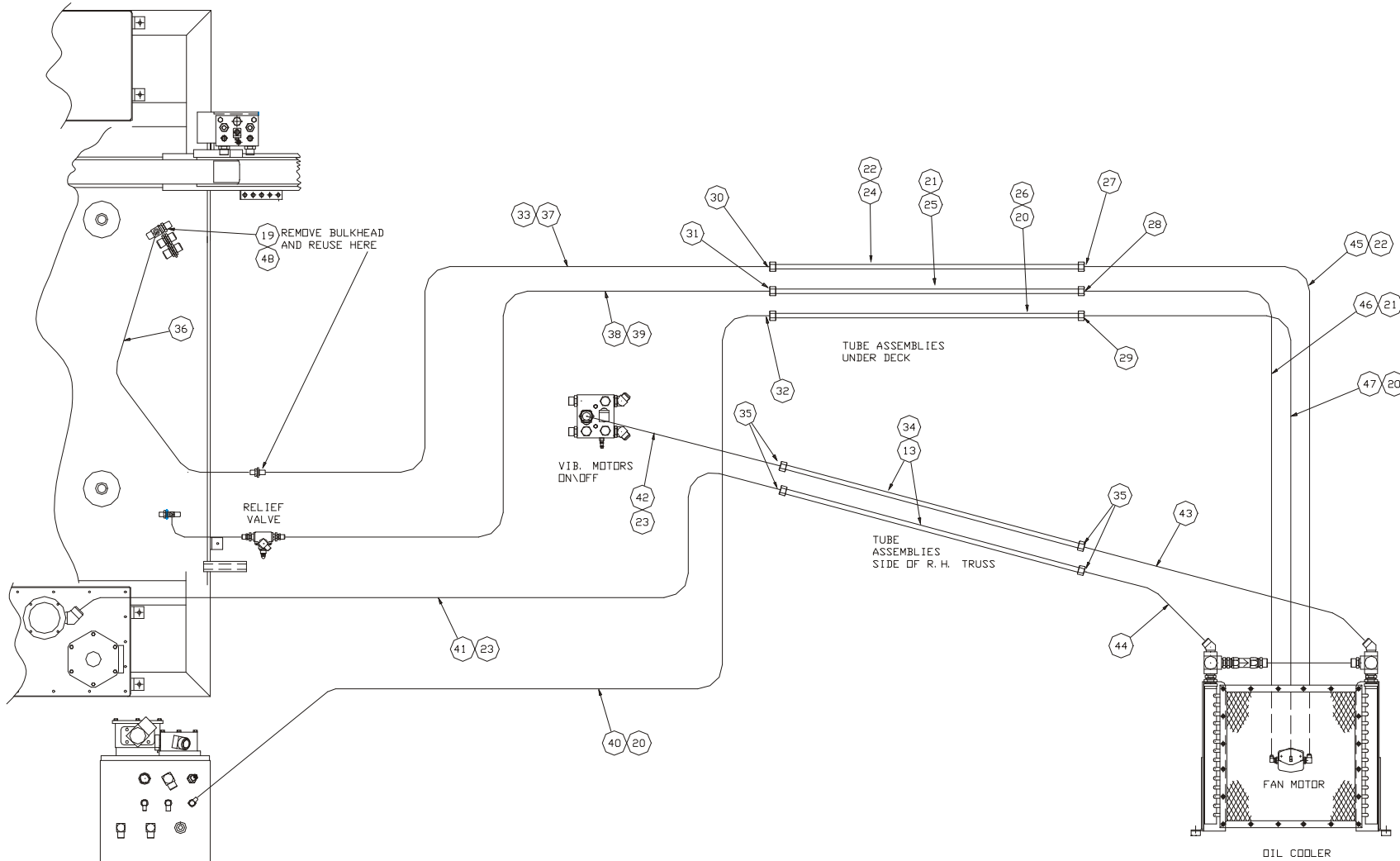
200 South Jackson Road  
Ludington, MI  
49431  
Tel: (231) 843-3431  
Fax: (231) 843-4830



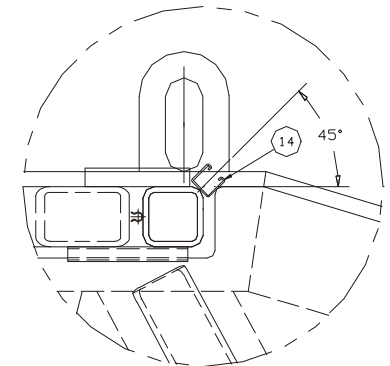
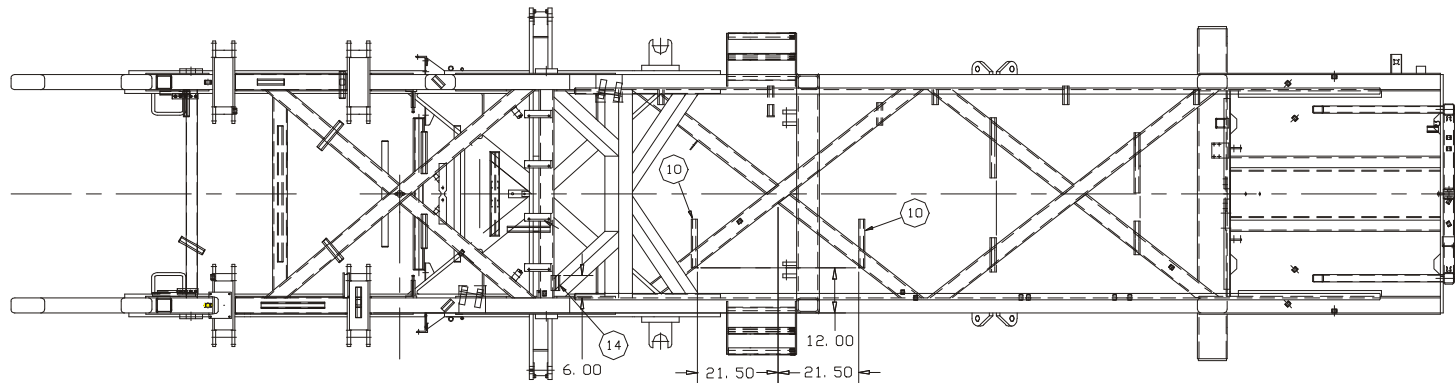
SECTION A-A



<p>CONFIDENTIAL          © COPYRIGHT 2003 HARSCO TECHNOLOGIES. THIS DRAWING OR DOCUMENT IS THE PROPERTY OF HARSCO TECHNOLOGIES AND EMPHATICALLY CONFIDENTIAL INFORMATION. TRADE SECRET INFORMATION. AND/OR INDICATED THAT IS THE PROPERTY OF HARSCO TECHNOLOGIES. BY ACCEPTING THIS DRAWING OR DOCUMENT, THE RECIPIENT AGREES TO NOT PROVIDE OR DISSEMINATE ANY INFORMATION TO ANY OTHER PARTY WITHOUT THE WRITTEN AUTHORIZATION OF HARSCO TECHNOLOGIES.</p>		<p>UNLESS OTHERWISE SPECIFIED:          TO THE CLOSEST MILLIMETER.          ALL DIMENSIONS TO PLACE BEGINNING DIMENSIONS &amp; DIMENSIONS TO FACE.          ALL DIMENSIONS TO FACE BEGINNING DIMENSIONS &amp; DIMENSIONS TO FACE.          ALL DIMENSIONS TO FACE BEGINNING DIMENSIONS &amp; DIMENSIONS TO FACE.          ALL DIMENSIONS TO FACE BEGINNING DIMENSIONS &amp; DIMENSIONS TO FACE.          ALL DIMENSIONS TO FACE BEGINNING DIMENSIONS &amp; DIMENSIONS TO FACE.          ALL DIMENSIONS TO FACE BEGINNING DIMENSIONS &amp; DIMENSIONS TO FACE.          ALL DIMENSIONS TO FACE BEGINNING DIMENSIONS &amp; DIMENSIONS TO FACE.          ALL DIMENSIONS TO FACE BEGINNING DIMENSIONS &amp; DIMENSIONS TO FACE.          ALL DIMENSIONS TO FACE BEGINNING DIMENSIONS &amp; DIMENSIONS TO FACE.</p>		<p>DESCRIPTION          OIL COOLER          RELOCATION          CONVERSION</p>	<p>PART NUMBER          2006155</p>	<p>Harsco Technologies          HarSCO</p>
<p>S10001892</p>	<p>04/03</p>	<p>MODEL 6700S CP</p>	<p>MATERIAL          SEE SEPARATE B/M</p>	<p>LUDINGTON, MI</p>		
<p>CI OR SI NUMBER</p>	<p>DATE MONTH/YEAR</p>	<p>DRAWN SJC DATE 04/22/03</p>	<p>SCALE NONE</p>	<p>DRAWING NUMBER 1005409, -</p>	<p>SHEET 1 OF 3</p>	

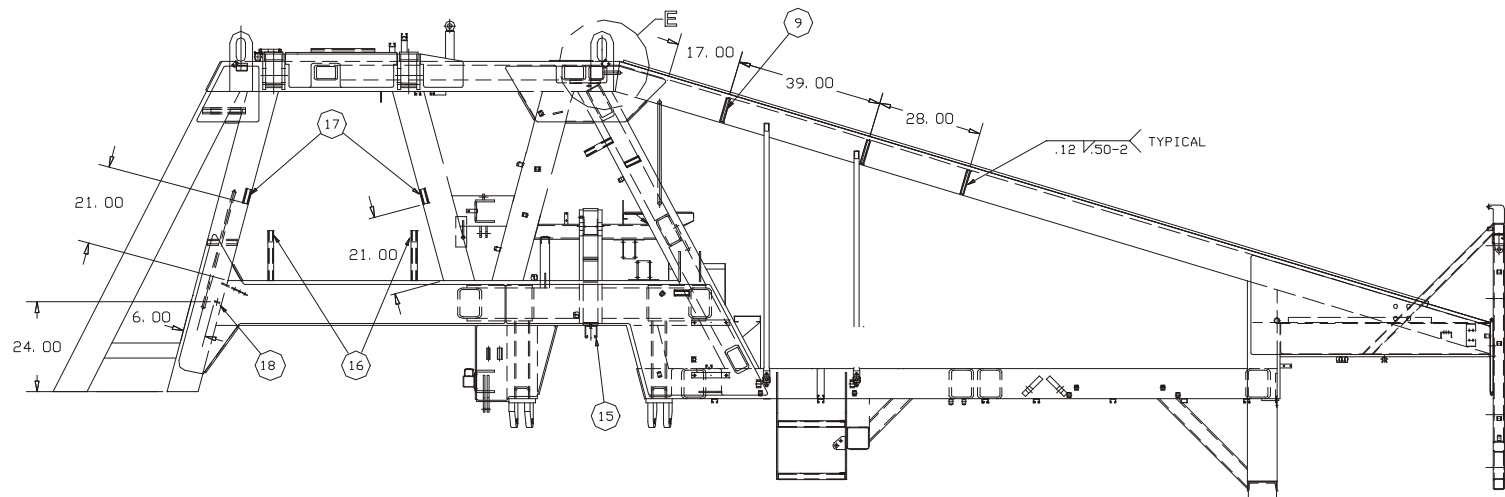


		CONFIDENTIAL	UNLESS OTHERWISE SPECIFIED - DO NOT SCALE DRAWING.					
		© COPYRIGHT 2003 HARSBECK TECHNOLOGIES. THIS DRAWING OR DOCUMENT IS THE PROPERTY OF HARSBECK TECHNOLOGIES AND EMPHATICALLY CONFIDENTIAL INFORMATION. TRADE SECRET INFORMATION. AND/OR KNOWLEDGE THAT IS THE PROPERTY OF HARSBECK TECHNOLOGIES. BY ACCEPTING THIS DRAWING OR DOCUMENT, THE RECIPIENT AGREES TO NOT PROVIDE OR DISSEMINATE THIS INFORMATION TO ANY OTHER PERSON OR ENTITY WITHOUT THE WRITTEN AUTHORIZATION OF HARSBECK TECHNOLOGIES.	ALL DIMENSIONS UNLESS OTHERWISE SPECIFIED ARE IN MILLIMETERS (INCHES). DIMENSIONS IN PARENTHESSES ARE IN INCHES (MILLIMETERS). DIMENSIONS IN PARENTHESSES ARE TO BE USED FOR MANUFACTURING PURPOSES. DIMENSIONS IN PARENTHESSES ARE TO BE USED FOR ASSEMBLY PURPOSES. DIMENSIONS IN PARENTHESSES ARE TO BE USED FOR IDENTIFICATION PURPOSES. DIMENSIONS IN PARENTHESSES ARE TO BE USED FOR IDENTIFICATION PURPOSES.	DESCRIPTION OIL COOLER RELOCATION CONVERSION	PART NUMBER 2006155			
S1000189E	04/03		ALL DIMENSIONS UNLESS OTHERWISE SPECIFIED ARE IN MILLIMETERS (INCHES). DIMENSIONS IN PARENTHESSES ARE IN INCHES (MILLIMETERS). DIMENSIONS IN PARENTHESSES ARE TO BE USED FOR MANUFACTURING PURPOSES. DIMENSIONS IN PARENTHESSES ARE TO BE USED FOR ASSEMBLY PURPOSES. DIMENSIONS IN PARENTHESSES ARE TO BE USED FOR IDENTIFICATION PURPOSES. DIMENSIONS IN PARENTHESSES ARE TO BE USED FOR IDENTIFICATION PURPOSES.	MODEL 6700S CP		LUDINGTON, MI		
CI OR SI NUMBER	DATE MONTH/YEAR		ALL DIMENSIONS UNLESS OTHERWISE SPECIFIED ARE IN MILLIMETERS (INCHES). DIMENSIONS IN PARENTHESSES ARE IN INCHES (MILLIMETERS). DIMENSIONS IN PARENTHESSES ARE TO BE USED FOR MANUFACTURING PURPOSES. DIMENSIONS IN PARENTHESSES ARE TO BE USED FOR ASSEMBLY PURPOSES. DIMENSIONS IN PARENTHESSES ARE TO BE USED FOR IDENTIFICATION PURPOSES. DIMENSIONS IN PARENTHESSES ARE TO BE USED FOR IDENTIFICATION PURPOSES.	DRAWN BY DATE 04/22/03	MATERIAL SEE SEPARATE B/M	DRAWING NUMBER 1005409, -	SHEET 2 OF 3	
			ALL DIMENSIONS UNLESS OTHERWISE SPECIFIED ARE IN MILLIMETERS (INCHES). DIMENSIONS IN PARENTHESSES ARE IN INCHES (MILLIMETERS). DIMENSIONS IN PARENTHESSES ARE TO BE USED FOR MANUFACTURING PURPOSES. DIMENSIONS IN PARENTHESSES ARE TO BE USED FOR ASSEMBLY PURPOSES. DIMENSIONS IN PARENTHESSES ARE TO BE USED FOR IDENTIFICATION PURPOSES. DIMENSIONS IN PARENTHESSES ARE TO BE USED FOR IDENTIFICATION PURPOSES.	SCALE NONE				



SECTION E

SCALE: .25=1



		<p>CONFIDENTIAL</p> <p>© COPYRIGHT 2003 HARCO TRACK TECHNOLOGIES. THIS DRAWING OR DOCUMENT IS THE PROPERTY OF HARCO TRACK TECHNOLOGIES AND ENHIDES CONFIDENTIAL INFORMATION. TRADE SECRET INFORMATION. AND/OR INDICATES THAT THE PROPERTY OF HARCO TRACK TECHNOLOGIES. BY ACCEPTING THIS DRAWING OR DOCUMENT, THE RECIPIENT AGREES (1) NOT TO REPRODUCE, OR DISSEMINATE, OR MAKE AVAILABLE, THE DRAWING OR DOCUMENT, OR ANY INFORMATION OR INDICATES THEREIN, TO ANY THIRD PARTY AND (2) NOT TO REPRODUCE OR USE THE DRAWING OR DOCUMENT TO MANUFACTURE ANY APPARATUS OR DEVICE, WITHOUT THE WRITTEN AUTHORIZATION OF HARCO TRACK TECHNOLOGIES.</p>		<p>UNLESS OTHERWISE SPECIFIED:</p> <p>1) ALL DIMENSIONS ARE IN INCHES.</p> <p>2) ALL DIMENSIONS ARE TO UNLESS OTHERWISE SPECIFIED.</p> <p>3) ALL DIMENSIONS ARE TO UNLESS OTHERWISE SPECIFIED.</p> <p>4) ALL DIMENSIONS ARE TO UNLESS OTHERWISE SPECIFIED.</p> <p>5) ALL DIMENSIONS ARE TO UNLESS OTHERWISE SPECIFIED.</p> <p>6) ALL DIMENSIONS ARE TO UNLESS OTHERWISE SPECIFIED.</p> <p>7) ALL DIMENSIONS ARE TO UNLESS OTHERWISE SPECIFIED.</p> <p>8) ALL DIMENSIONS ARE TO UNLESS OTHERWISE SPECIFIED.</p> <p>9) ALL DIMENSIONS ARE TO UNLESS OTHERWISE SPECIFIED.</p> <p>10) ALL DIMENSIONS ARE TO UNLESS OTHERWISE SPECIFIED.</p> <p>11) ALL DIMENSIONS ARE TO UNLESS OTHERWISE SPECIFIED.</p> <p>12) ALL DIMENSIONS ARE TO UNLESS OTHERWISE SPECIFIED.</p> <p>13) ALL DIMENSIONS ARE TO UNLESS OTHERWISE SPECIFIED.</p> <p>14) ALL DIMENSIONS ARE TO UNLESS OTHERWISE SPECIFIED.</p> <p>15) ALL DIMENSIONS ARE TO UNLESS OTHERWISE SPECIFIED.</p> <p>16) ALL DIMENSIONS ARE TO UNLESS OTHERWISE SPECIFIED.</p> <p>17) ALL DIMENSIONS ARE TO UNLESS OTHERWISE SPECIFIED.</p> <p>18) ALL DIMENSIONS ARE TO UNLESS OTHERWISE SPECIFIED.</p> <p>19) ALL DIMENSIONS ARE TO UNLESS OTHERWISE SPECIFIED.</p> <p>20) ALL DIMENSIONS ARE TO UNLESS OTHERWISE SPECIFIED.</p> <p>21) ALL DIMENSIONS ARE TO UNLESS OTHERWISE SPECIFIED.</p> <p>22) ALL DIMENSIONS ARE TO UNLESS OTHERWISE SPECIFIED.</p> <p>23) ALL DIMENSIONS ARE TO UNLESS OTHERWISE SPECIFIED.</p> <p>24) ALL DIMENSIONS ARE TO UNLESS OTHERWISE SPECIFIED.</p> <p>25) ALL DIMENSIONS ARE TO UNLESS OTHERWISE SPECIFIED.</p> <p>26) ALL DIMENSIONS ARE TO UNLESS OTHERWISE SPECIFIED.</p> <p>27) ALL DIMENSIONS ARE TO UNLESS OTHERWISE SPECIFIED.</p> <p>28) ALL DIMENSIONS ARE TO UNLESS OTHERWISE SPECIFIED.</p> <p>29) ALL DIMENSIONS ARE TO UNLESS OTHERWISE SPECIFIED.</p> <p>30) ALL DIMENSIONS ARE TO UNLESS OTHERWISE SPECIFIED.</p> <p>31) ALL DIMENSIONS ARE TO UNLESS OTHERWISE SPECIFIED.</p> <p>32) ALL DIMENSIONS ARE TO UNLESS OTHERWISE SPECIFIED.</p> <p>33) ALL DIMENSIONS ARE TO UNLESS OTHERWISE SPECIFIED.</p> <p>34) ALL DIMENSIONS ARE TO UNLESS OTHERWISE SPECIFIED.</p> <p>35) ALL DIMENSIONS ARE TO UNLESS OTHERWISE SPECIFIED.</p> <p>36) ALL DIMENSIONS ARE TO UNLESS OTHERWISE SPECIFIED.</p> <p>37) ALL DIMENSIONS ARE TO UNLESS OTHERWISE SPECIFIED.</p> <p>38) ALL DIMENSIONS ARE TO UNLESS OTHERWISE SPECIFIED.</p> <p>39) ALL DIMENSIONS ARE TO UNLESS OTHERWISE SPECIFIED.</p> <p>40) ALL DIMENSIONS ARE TO UNLESS OTHERWISE SPECIFIED.</p> <p>41) ALL DIMENSIONS ARE TO UNLESS OTHERWISE SPECIFIED.</p> <p>42) ALL DIMENSIONS ARE TO UNLESS OTHERWISE SPECIFIED.</p> <p>43) ALL DIMENSIONS ARE TO UNLESS OTHERWISE SPECIFIED.</p> <p>44) ALL DIMENSIONS ARE TO UNLESS OTHERWISE SPECIFIED.</p> <p>45) ALL DIMENSIONS ARE TO UNLESS OTHERWISE SPECIFIED.</p> <p>46) ALL DIMENSIONS ARE TO UNLESS OTHERWISE SPECIFIED.</p> <p>47) ALL DIMENSIONS ARE TO UNLESS OTHERWISE SPECIFIED.</p> <p>48) ALL DIMENSIONS ARE TO UNLESS OTHERWISE SPECIFIED.</p> <p>49) ALL DIMENSIONS ARE TO UNLESS OTHERWISE SPECIFIED.</p> <p>50) ALL DIMENSIONS ARE TO UNLESS OTHERWISE SPECIFIED.</p> <p>51) ALL DIMENSIONS ARE TO UNLESS OTHERWISE SPECIFIED.</p> <p>52) ALL DIMENSIONS ARE TO UNLESS OTHERWISE SPECIFIED.</p> <p>53) ALL DIMENSIONS ARE TO UNLESS OTHERWISE SPECIFIED.</p> <p>54) ALL DIMENSIONS ARE TO UNLESS OTHERWISE SPECIFIED.</p> <p>55) ALL DIMENSIONS ARE TO UNLESS OTHERWISE SPECIFIED.</p> <p>56) ALL DIMENSIONS ARE TO UNLESS OTHERWISE SPECIFIED.</p> <p>57) ALL DIMENSIONS ARE TO UNLESS OTHERWISE SPECIFIED.</p> <p>58) ALL DIMENSIONS ARE TO UNLESS OTHERWISE SPECIFIED.</p> <p>59) ALL DIMENSIONS ARE TO UNLESS OTHERWISE SPECIFIED.</p> <p>60) ALL DIMENSIONS ARE TO UNLESS OTHERWISE SPECIFIED.</p> <p>61) ALL DIMENSIONS ARE TO UNLESS OTHERWISE SPECIFIED.</p> <p>62) ALL DIMENSIONS ARE TO UNLESS OTHERWISE SPECIFIED.</p> <p>63) ALL DIMENSIONS ARE TO UNLESS OTHERWISE SPECIFIED.</p> <p>64) ALL DIMENSIONS ARE TO UNLESS OTHERWISE SPECIFIED.</p> <p>65) ALL DIMENSIONS ARE TO UNLESS OTHERWISE SPECIFIED.</p> <p>66) ALL DIMENSIONS ARE TO UNLESS OTHERWISE SPECIFIED.</p> <p>67) ALL DIMENSIONS ARE TO UNLESS OTHERWISE SPECIFIED.</p> <p>68) ALL DIMENSIONS ARE TO UNLESS OTHERWISE SPECIFIED.</p> <p>69) ALL DIMENSIONS ARE TO UNLESS OTHERWISE SPECIFIED.</p> <p>70) ALL DIMENSIONS ARE TO UNLESS OTHERWISE SPECIFIED.</p> <p>71) ALL DIMENSIONS ARE TO UNLESS OTHERWISE SPECIFIED.</p> <p>72) ALL DIMENSIONS ARE TO UNLESS OTHERWISE SPECIFIED.</p> <p>73) ALL DIMENSIONS ARE TO UNLESS OTHERWISE SPECIFIED.</p> <p>74) ALL DIMENSIONS ARE TO UNLESS OTHERWISE SPECIFIED.</p> <p>75) ALL DIMENSIONS ARE TO UNLESS OTHERWISE SPECIFIED.</p> <p>76) ALL DIMENSIONS ARE TO UNLESS OTHERWISE SPECIFIED.</p> <p>77) ALL DIMENSIONS ARE TO UNLESS OTHERWISE SPECIFIED.</p> <p>78) ALL DIMENSIONS ARE TO UNLESS OTHERWISE SPECIFIED.</p> <p>79) ALL DIMENSIONS ARE TO UNLESS OTHERWISE SPECIFIED.</p> <p>80) ALL DIMENSIONS ARE TO UNLESS OTHERWISE SPECIFIED.</p> <p>81) ALL DIMENSIONS ARE TO UNLESS OTHERWISE SPECIFIED.</p> <p>82) ALL DIMENSIONS ARE TO UNLESS OTHERWISE SPECIFIED.</p> <p>83) ALL DIMENSIONS ARE TO UNLESS OTHERWISE SPECIFIED.</p> <p>84) ALL DIMENSIONS ARE TO UNLESS OTHERWISE SPECIFIED.</p> <p>85) ALL DIMENSIONS ARE TO UNLESS OTHERWISE SPECIFIED.</p> <p>86) ALL DIMENSIONS ARE TO UNLESS OTHERWISE SPECIFIED.</p> <p>87) ALL DIMENSIONS ARE TO UNLESS OTHERWISE SPECIFIED.</p> <p>88) ALL DIMENSIONS ARE TO UNLESS OTHERWISE SPECIFIED.</p> <p>89) ALL DIMENSIONS ARE TO UNLESS OTHERWISE SPECIFIED.</p> <p>90) ALL DIMENSIONS ARE TO UNLESS OTHERWISE SPECIFIED.</p> <p>91) ALL DIMENSIONS ARE TO UNLESS OTHERWISE SPECIFIED.</p> <p>92) ALL DIMENSIONS ARE TO UNLESS OTHERWISE SPECIFIED.</p> <p>93) ALL DIMENSIONS ARE TO UNLESS OTHERWISE SPECIFIED.</p> <p>94) ALL DIMENSIONS ARE TO UNLESS OTHERWISE SPECIFIED.</p> <p>95) ALL DIMENSIONS ARE TO UNLESS OTHERWISE SPECIFIED.</p> <p>96) ALL DIMENSIONS ARE TO UNLESS OTHERWISE SPECIFIED.</p> <p>97) ALL DIMENSIONS ARE TO UNLESS OTHERWISE SPECIFIED.</p> <p>98) ALL DIMENSIONS ARE TO UNLESS OTHERWISE SPECIFIED.</p> <p>99) ALL DIMENSIONS ARE TO UNLESS OTHERWISE SPECIFIED.</p> <p>100) ALL DIMENSIONS ARE TO UNLESS OTHERWISE SPECIFIED.</p>		<p>DESCRIPTION</p> <p>OIL COOLER</p> <p>HELICATTON</p> <p>CONVERSION</p>		<p>PART NUMBER</p> <p>2006155</p>		<p>Harco Track Technologies</p> <p>Harco</p>					
<p>S10001892</p> <p>04/03</p> <p>C1 DR S1 NUMBER</p>		<p>DATE</p> <p>MONTH/YEAR</p>		<p>MODEL</p> <p>6700S CP</p>		<p>DRAWN</p> <p>B JE</p>		<p>DATE</p> <p>04/28/03</p>		<p>MATERIAL</p> <p>SEE SEPARATE B/M</p>		<p>LUDINGTON, MI</p> <p>DRAWING NUMBER</p> <p>1005409, -</p>		<p>SHEET 3</p> <p>OF 3</p>	