



# Harsco Track Technologies

Harsco

www.harscotrack.com

---

## SERVICE BULLETIN MAINTENANCE OF WAY EQUIPMENT

---

**DATE:** 11-17-2003 **BULLETIN NO:** 03-024

**TITLE:** FOLDING LIGHT REFERENCE TONGUE HANDLES

**RATING:**

<input type="checkbox"/> <b>DIRECTIVE</b> (Action Is Required)	<input type="checkbox"/> <b>ALERT</b> (Potential Problem)
<input type="checkbox"/> <b>INFORMATION</b> (Action Is Optional)	<input checked="" type="checkbox"/> <b>PRODUCT IMPROVEMENT</b> (Enhance Product)

**PRODUCT SERIES / MODEL:** 6700S Tampers

**SERIAL NO:** All Models with Folding Light Reference Tongues

**SUMMARY:** Handles are now available that attach to the tongues to assist the operator in the proper hand location when loading the tongues. The handles have been installed on machines with the folding tongue option shipped later than August 2003.

**OPERATIONAL IMPACT:** The installation of the handles will enhance machine safety.

**ACTION:** Order six handles #2007874 and install in the proper location on the three light reference tongues per the drawing and instructions.

**CONTACT:** If you have any questions or if we can be of any service, please contact Bill Perry or Mark Krusniak at the Ludington, MI. facility, (231) 843-3431.

**SAFETY INFORMATION**



- **FOLLOW APPLICABLE RAILROAD LOCKOUT - TAGOUT PROCEDURE TO REMOVE ALL ENERGY SOURCES FROM MACHINE. FAILURE TO COMPLY COULD RESULT IN SEVERE BODILY INJURY.**

**HANDLE INSTALLATION** - See Figure 1 and Figure 2

1. Place the folding light reference tongue in the work position as shown in Figure 1.
2. Remove the hex nuts, u-bolts and clamp brackets from the handles (1). Install the handles (1) to the Folding Light Reference Tongues per the dimensions shown and secure with the clamp brackets, u-bolts and hex nuts.
3. When the folding light reference tongue is placed in the travel position the handles will be positioned as shown in Figure 2.

**PARTS LIST** - See Figure 1 or Figure 2 for Item Numbers

ITEM	PART NO	DESCRIPTION	QTY
1	2007874	Handle Assembly . . . . .	6

FIGURE 1  
FOLDING LIGHT REFERENCE TONGUE IN WORK POSITION

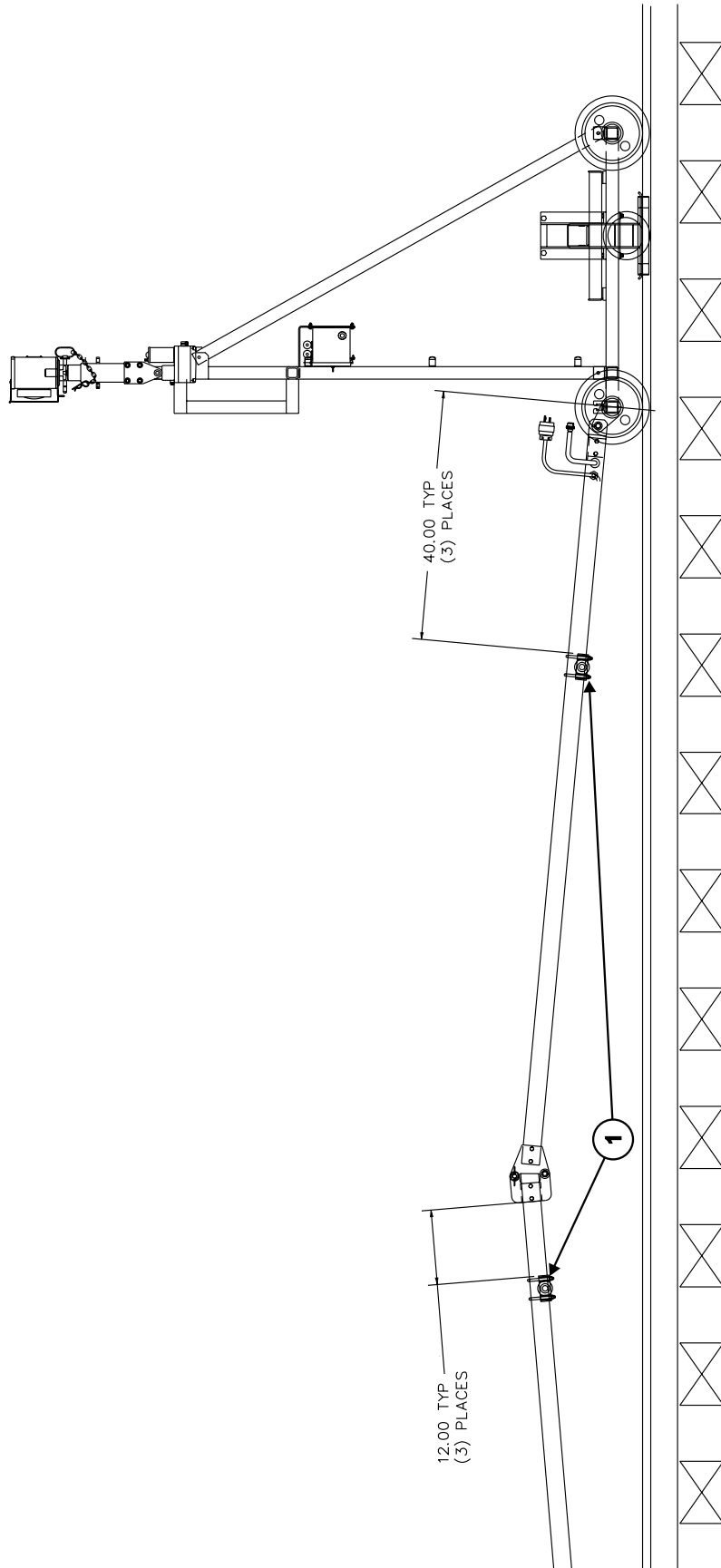
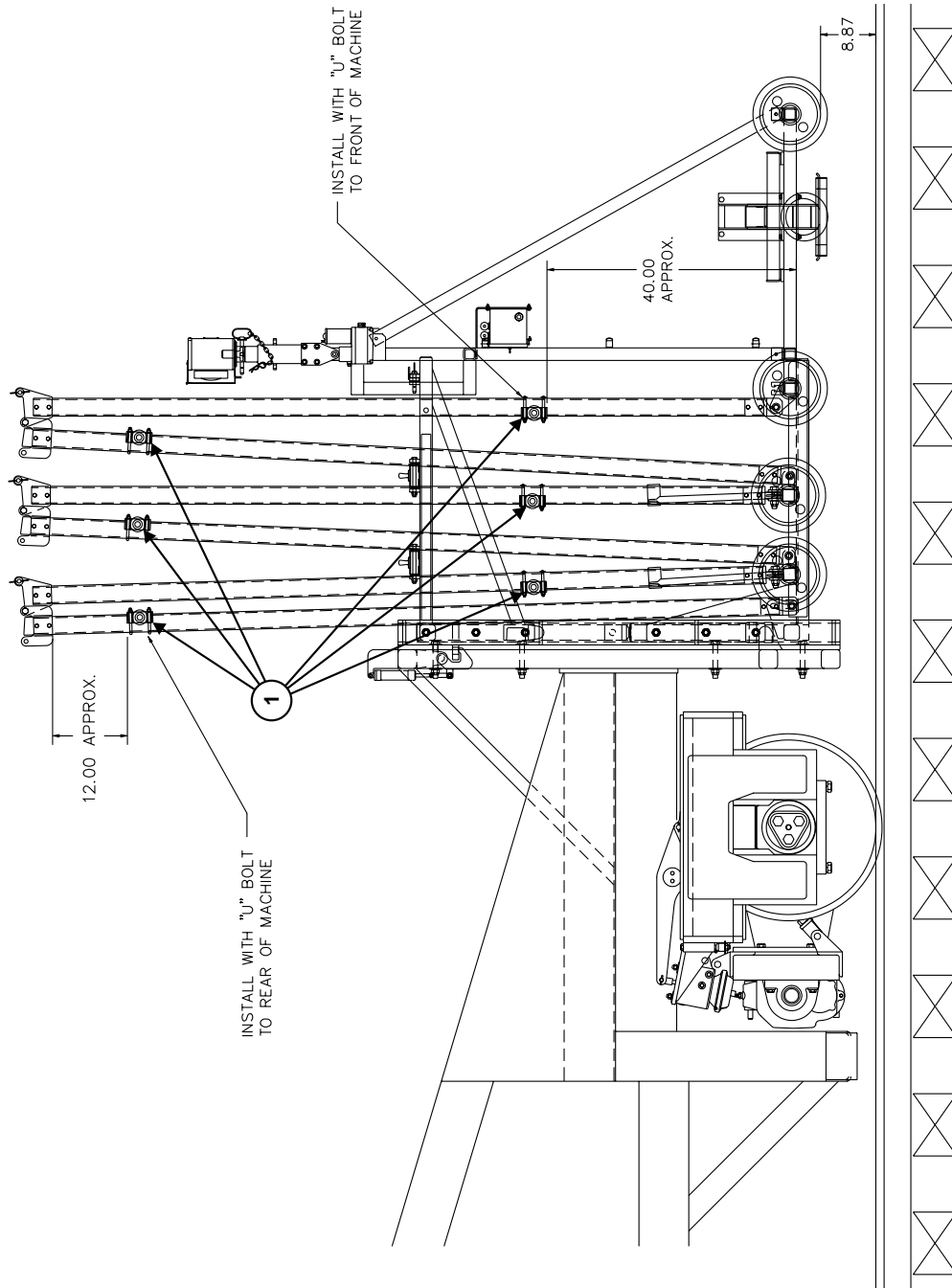


FIGURE 2  
FOLDING LIGHT REFERENCE TONGUE IN TRAVEL POSITION



© 2003 HARSCO TRACK TECHNOLOGIES, HARSCO CORPORATION

415 North Main Street  
Fairmont, MN  
56031-1837  
Tel: (507) 235-3361  
Fax: (507) 235-7370

2401 Edmund Road, Box 20  
Cayce-West Columbia, SC  
29171-0020  
Tel: (803) 822-9160  
Fax: (803) 822-7471

200 South Jackson Road  
Ludington, MI  
49431  
Tel: (231) 843-3431  
Fax: (231) 843-1644