



# Harsco Track Technologies

Harsco

www.harscotrack.com

---

## SERVICE BULLETIN MAINTENANCE OF WAY EQUIPMENT

---

**DATE:** 11-17-2003 **BULLETIN NO:** 03-026

**TITLE:** JACKING CYLINDER ROD EYE INTERFERENCE

**RATING:**

<input type="checkbox"/> <b>DIRECTIVE</b> (Action Is Required)	<input type="checkbox"/> <b>ALERT</b> (Potential Problem)
<input type="checkbox"/> <b>INFORMATION</b> (Action Is Optional)	<input checked="" type="checkbox"/> <b>PRODUCT IMPROVEMENT</b> (Enhance Product)

**PRODUCT SERIES / MODEL:** 6700S Tampers

**SERIAL NO:** All Models

**SUMMARY:** There have been several instances where the weld on the Jacking Cylinder rod eye can interfere with the boss on the Jackbeam Lifting ears. This interference usually occurs when the Jackbeam is all the way forward or rearward and the Jacking cylinder is completely retracted. When this condition exists, there is the possibility of putting a side load on the cylinder rod which can in turn cause premature wear to the cylinder barrel, piston and rod bearing. The interference can be eliminated by grinding a 3/4" x 45° chamfer on the top side of the Jackbeam Lifting Ear Boss.

**OPERATIONAL IMPACT:** To improve jacking cylinder reliability and minimize wear.

**ACTION:** Grind a 3/4 inch x 45° chamfer on the top side of the Jackbeam Lifting Ear Boss per the instructions in this Service Bulletin.

**CONTACT:** If you have any questions or if we can be of any service, please contact Mark Krusniak at the Ludington, MI. facility, (231) 843-3431.

**SAFETY INFORMATION**

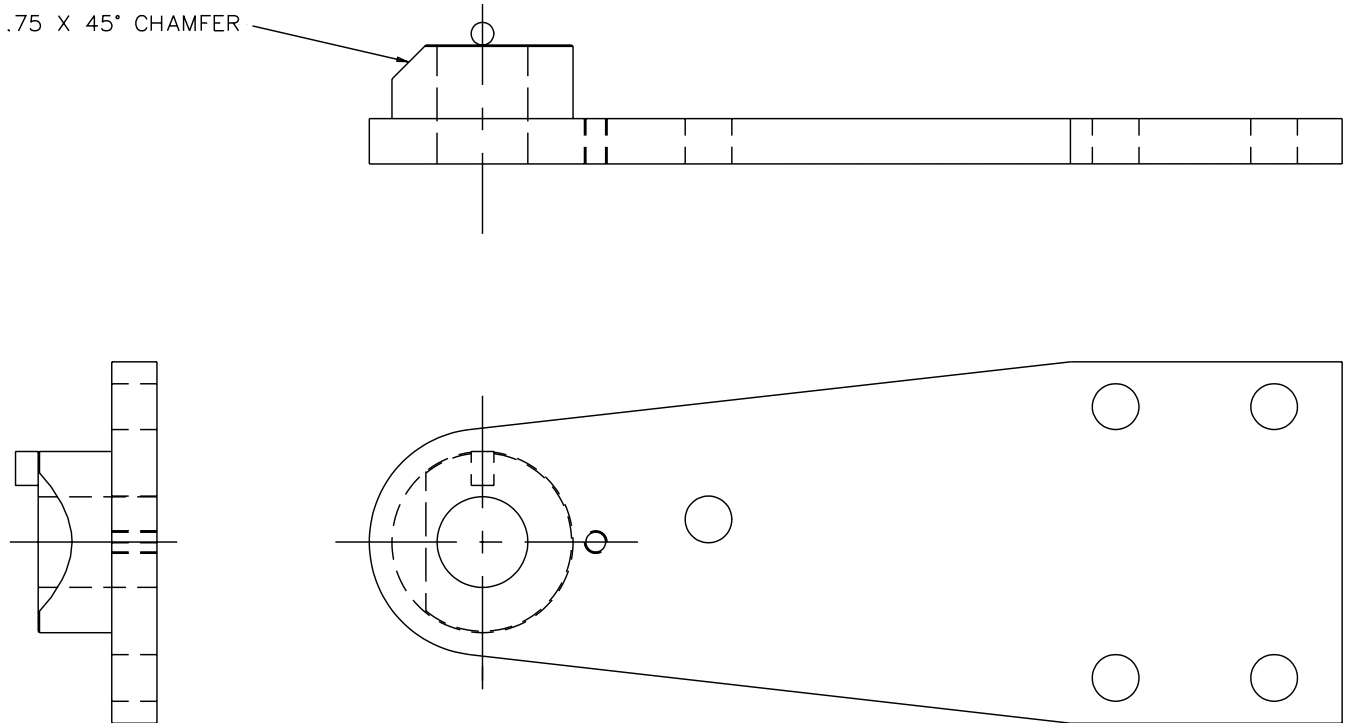


- FOLLOW APPLICABLE RAILROAD LOCKOUT - TAGOUT PROCEDURE TO REMOVE ALL ENERGY SOURCES FROM MACHINE. FAILURE TO COMPLY COULD RESULT IN SEVERE BODILY INJURY.

**JACKBEAM LIFTING EAR REWORK - See Figure 1**

1. Lower the Jackbeam to the rail.
2. Remove the cylinder pin connecting the cylinder to the Jackbeam.
3. Swing the Jacking cylinder out of the way and secure to provide clearance for grinding.
4. Grind a 3/4 inch x 45° bevel on the top side of both Jackbeam cylinder ears as shown in Figure 1. Be sure to remove all sharp edges, burrs, etc.
5. Re-assemble the cylinder to the Jackbeam.
6. Repeat procedure to rework the Jackbeam lifting ears on the other side of the machine.

**FIGURE 1  
JACKBEAM LIFTING EAR**



**© 2003 HARSCO TRACK TECHNOLOGIES, HARSCO CORPORATION**

415 North Main Street  
 Fairmont, MN  
 56031-1837  
 Tel: (507) 235-3361  
 Fax: (507) 235-7370

2401 Edmund Road, Box 20  
 Cayce-West Columbia, SC  
 29171-0020  
 Tel: (803) 822-9160  
 Fax: (803) 822-7471

200 South Jackson Road  
 Ludington, MI  
 49431  
 Tel: (231) 843-3431  
 Fax: (231) 843-1644