



Harsco Track Technologies

Harsco

www.harscotrack.com

SERVICE BULLETIN MAINTENANCE OF WAY EQUIPMENT

DATE: 11-26-2003 **BULLETIN NO:** 03-027

TITLE: FRONT WHEEL DRIVE MANIFOLD PILOT CHECK VALVE

RATING:

<input type="checkbox"/> DIRECTIVE (Action Is Required)	<input type="checkbox"/> ALERT (Potential Problem)
<input type="checkbox"/> INFORMATION (Action Is Optional)	<input checked="" type="checkbox"/> PRODUCT IMPROVEMENT (Enhance Product)

PRODUCT SERIES / MODEL: 6700S Tampers

SERIAL NO: All Models with Front Wheel Drive Manifold

SUMMARY: The check valve located internally in the Front Wheel Drive manifold has broken on occasion due to hydraulic impulses in the line. It has been determined that the Travel circuit sees pressure spikes that are higher than the 3,000 PSI rating of the valve. This valve has been replaced by a valve with a 5,000 PSI rating on machines manufactured after October 2003. This Service Group changes the check valve in the manifold on existing machines to the higher rated valve. The new manifold containing the 5,000 psi check valve can be identified with the part # DTS-0278-2-A stamped on the manifold. The original manifold will be stamped with the part # DTS-0278 on the manifold. The new 5,000 PSI check valve cartridge can be identified by the "5000" stamped on the top of the valve.

OPERATIONAL IMPACT: To eliminate the possible breakage of the check valve and improve reliability of the Travel circuit.

ACTION: Order one 5,000 PSI check valve part #172328-1. Install the check valve per the instructions in this Service Bulletin.

CONTACT: If you have any questions or if we can be of any service, please contact Bill Perry at the Ludington, MI. facility, (231) 843-3431.

SAFETY INFORMATION



- **FOLLOW APPLICABLE RAILROAD LOCKOUT - TAGOUT PROCEDURE TO REMOVE ALL ENERGY SOURCES FROM MACHINE. FAILURE TO COMPLY COULD RESULT IN SEVERE BODILY INJURY.**

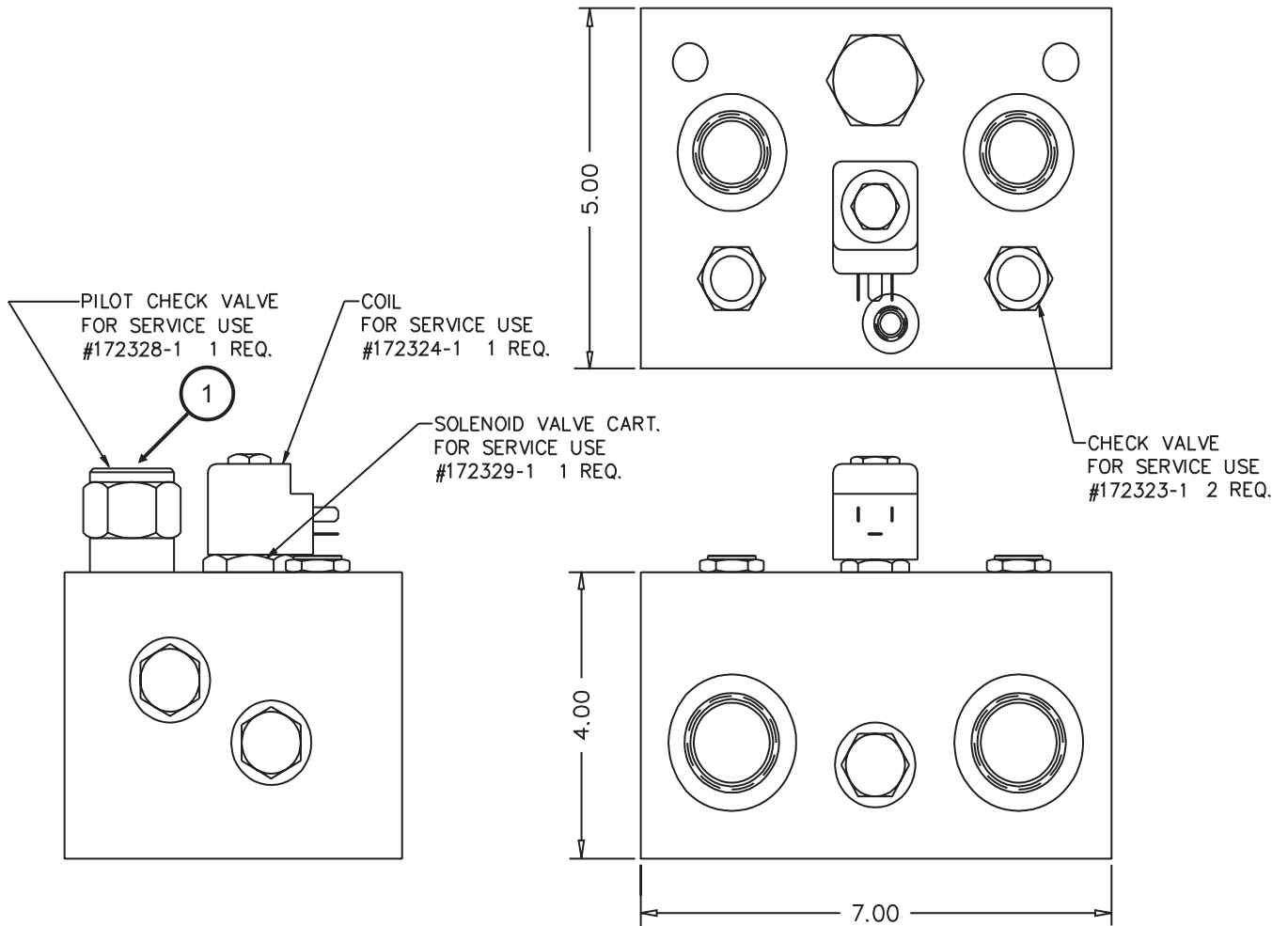
CHECK VALVE INSTALLATION - See Figure 1

1. Locate the check valve (1) in the Front Wheel Drive Manifold on the machine.
2. Verify if the existing check valve (1) is stamped with a number on the top of the valve or if it is blank.
 - 2.1 If the check valve is blank (not stamped with a number), it is recommended to replace the existing 3,000 PSI check valve with a new 5,000 PSI check valve.
 - 2.2 If the check valve is stamped with the number "5000", the check valve is the new 5,000 PSI check valve and does not have to be replaced.
3. Remove the existing 3,000 PSI check valve (1) from the Front Wheel Drive manifold. **BE SURE TO CATCH ALL HYDRAULIC FLUID IN A LEAK-PROOF CONTAINER.**
4. Make sure the new check valve is stamped with the number "5000" on the top of the valve. Then install the new 5,000 PSI check valve (1) in the Front Wheel Drive manifold. Tighten securely.
5. Start the engine and pressurize the front wheel drive circuit.
6. Check the new check valve for leaks. **DO NOT USE YOUR BARE HANDS WHEN CHECKING FOR HYDRAULIC LEAKS.**

PARTS LIST - See Figure 1 for Item Numbers

ITEM	PART NO	DESCRIPTION	QTY
1	172328-1	Check Valve, 5,000 PSI.....	1

FIGURE 1
FRONT WHEEL DRIVE MANIFOLD



© 2003 HARSCO TRACK TECHNOLOGIES, HARSCO CORPORATION

415 North Main Street
Fairmont, MN
56031-1837
Tel: (507) 235-3361
Fax: (507) 235-7370

2401 Edmund Road, Box 20
Cayce-West Columbia, SC
29171-0020
Tel: (803) 822-9160
Fax: (803) 822-7471

200 South Jackson Road
Ludington, MI
49431
Tel: (231) 843-3431
Fax: (231) 843-1644

Printed In U.S.A.