



Harsco Track Technologies

Harsco

www.harscotrack.com

SERVICE BULLETIN MAINTENANCE OF WAY EQUIPMENT

DATE: 3-25-2004 **BULLETIN NO:** 04-004

TITLE: 2006664 INDEX BRAKE VALVE CONVERSION

RATING:

<input type="checkbox"/>	DIRECTIVE (Action Is Required)	<input type="checkbox"/>	ALERT (Potential Problem)
<input type="checkbox"/>	INFORMATION (Action Is Optional)	<input checked="" type="checkbox"/>	PRODUCT IMPROVEMENT (Enhance Product)

PRODUCT SERIES / MODEL: 6700S Tampers

SERIAL NO: All Models Serial # 146379 and higher

SUMMARY: A conversion has been developed to change the index brake valve to a more reliable unit and to relocate it to a cleaner, cooler and more accessible place on the machine.

OPERATIONAL IMPACT: The installation of this conversion will provide a more reliable index brake valve.

ACTION: Order conversion #2006664 and install per the drawing and instructions. The installation of this conversion involves disconnecting the hydraulic lines and electrical wires from the existing index brake valve, removing the existing index brake valve, welding a new mounting plate on the machine frame, installing the new index brake valve, and reconnecting the hydraulic lines and electrical wires to the new index brake valve.

CONTACT: If you have any questions or if we can be of any service, please contact Bill Perry at the Ludington, MI. facility, (231) 843-3431.

SAFETY INFORMATION

n FOLLOW APPLICABLE RAILROAD LOCKOUT - TAGOUT PROCEDURE TO REMOVE ALL ENERGY SOURCES FROM MACHINE. FAILURE TO COMPLY COULD RESULT IN SEVERE BODILY INJURY.

INDEX BRAKE VALVE CONVERSION - See Drawing #2006664

1. When disconnecting and/or removing hydraulic lines and fittings, be sure to catch all hydraulic fluid in a leak-proof container.
2. Disconnect the electrical wires from the existing index brake valve. Be sure to mark the electrical wires for proper re-assembly.
3. Disconnect the existing hydraulic lines to the existing index brake valve. Be sure to mark the hydraulic lines as shown on Drawing #2006664. Then remove the existing index brake valve.
4. Weld the new mounting plate (2) on the machine frame per the dimensions and and weld symbol as shown on Drawing #2006664.
5. Install the new index brake valve sub-assembly (1) to the new mounting plate (2) using two cap screws (3), four flat washers (5) and two lock nuts (4).
6. Connect the existing hydraulic lines to the new index brake valve (1) as shown on Drawing #2006664. Be sure to tighten all hydraulic lines and fittings securely.
7. Install the new electrical cable (6) to the end of the existing electrical cable using six butt splices (8). Install the six terminals (7) on the ends of the electrical cable wires. Reconnect the electrical wires to the proper terminals on the index brake valve.

CHECK FOR LEAKS

8. Start the machine engine and pressurize the index brake valve hydraulic lines.
9. Check all hydraulic lines and fittings for hydraulic leaks using cardboard, wood, etc. **DO NOT USE YOUR BARE HANDS.**

CHECK OPERATION

10. Operate the index brake valve and check for proper operation.

PARTS LIST

Note: See Drawing #2006664.

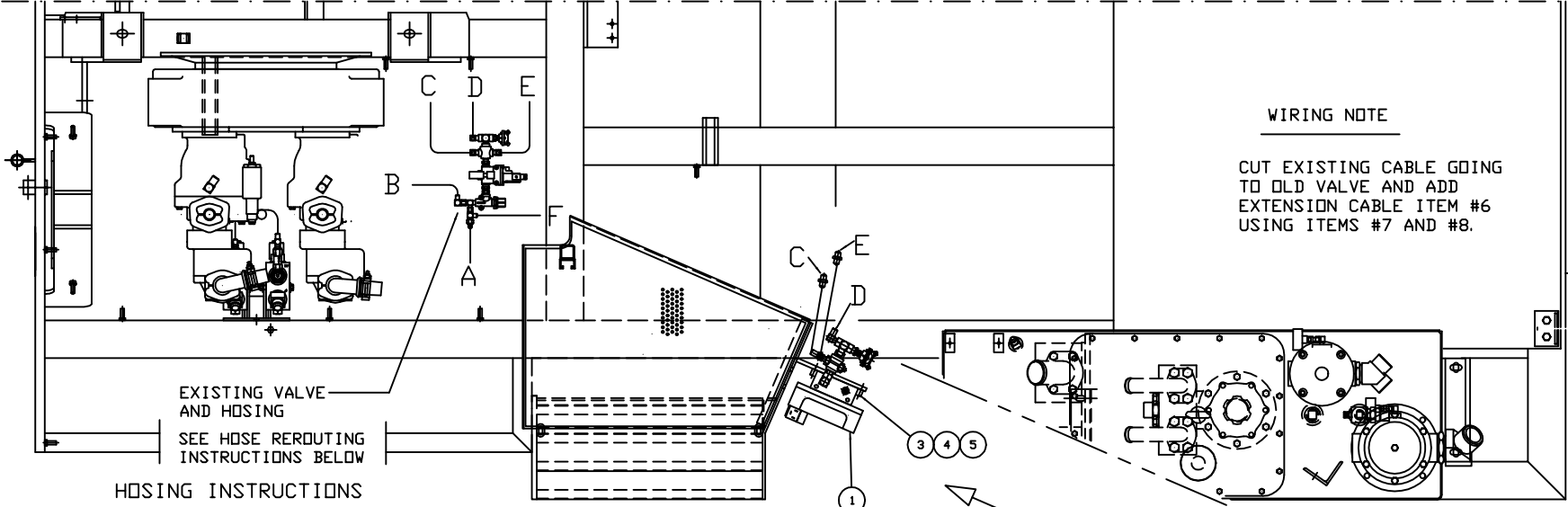
ITEM	PART NO	DESCRIPTION	QTY
1	2008657	Brake Valve Sub-Assembly	1
2	2006671	Mounting Plate - Brake Assist Valve	1
3	250010-7	Hex Head Cap Screw, 1/4"-20 x 1-1/2"	2
4	153140-420	Lock Nut, 1/4"-20	2
5	150973-2	Washer, 1/4" Plain	4
6	6054	Cable, 48"	1
7	5854	Terminal	6
8	157311-3	Butt Splice, Heat Shrink	6

© 2004 HARSCO TRACK TECHNOLOGIES, HARSCO CORPORATION

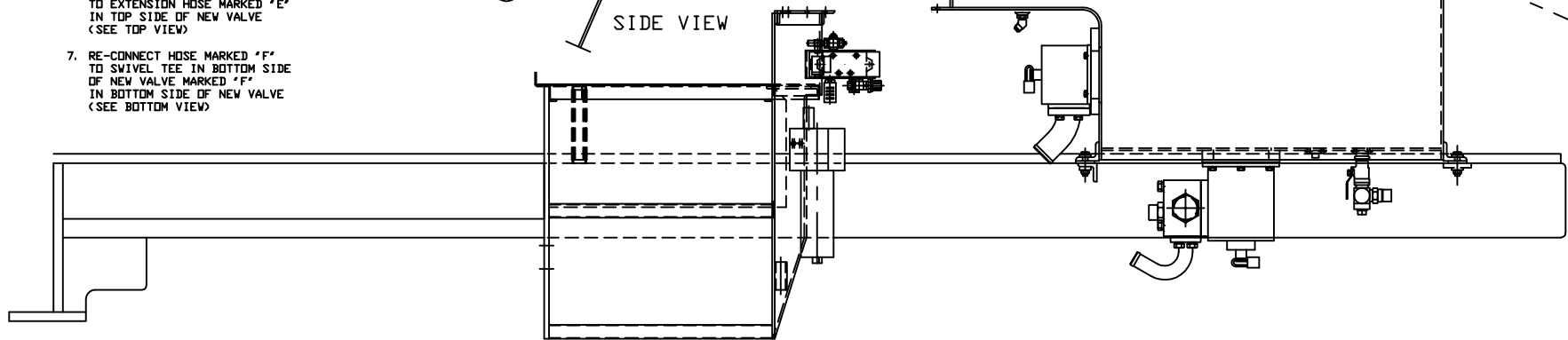
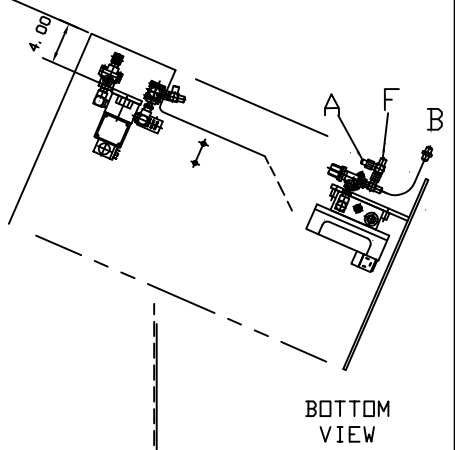
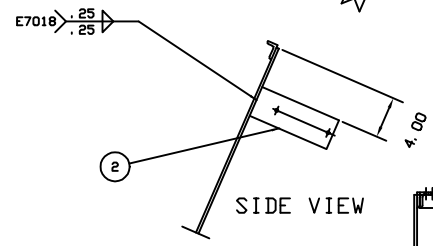
415 North Main Street
Fairmont, MN
56031-1837
Tel: (507) 235-3361
Fax: (507) 235-7370

2401 Edmund Road, Box 20
Cayce-West Columbia, SC
29171-0020
Tel: (803) 822-9160
Fax: (803) 822-7471

200 South Jackson Road
Ludington, MI
49431
Tel: (231) 843-3431
Fax: (231) 843-1644



1. REMOVE ALL HOSES GOING AT EXISTING VALVE AND MARK AS SHOWN.
2. RE-CONNECT HOSE MARKED "A" TO TEE IN BOTTOM SIDE OF NEW VALVE MARKED "A". (SEE BOTTOM VIEW)
3. RE-CONNECT HOSE MARKED "B" TO EXTENSION HOSE MARKED "B" IN BOTTOM SIDE OF NEW VALVE (SEE BOTTOM VIEW)
4. RE-CONNECT HOSE MARKED "C" TO EXTENSION HOSE MARKED "C" IN TOP SIDE OF NEW VALVE (SEE TOP VIEW)
5. RE-CONNECT HOSE MARKED "D" TO TEE MARKED "D" IN TOP SIDE OF NEW VALVE (SEE TOP VIEW)
6. RE-CONNECT HOSE MARKED "E" TO EXTENSION HOSE MARKED "E" IN TOP SIDE OF NEW VALVE (SEE TOP VIEW)
7. RE-CONNECT HOSE MARKED "F" TO SWIVEL TEE IN BOTTOM SIDE OF NEW VALVE MARKED "F" IN BOTTOM SIDE OF NEW VALVE (SEE BOTTOM VIEW)



CONFIDENTIAL		REPRODUCTION OF THIS DOCUMENT IS PROHIBITED WITHOUT THE WRITTEN AUTHORIZATION OF HARSCO TRACK TECHNOLOGIES.	
S10002458	2/04	DESCRIPTION GRADE BRAKE ASSIST VALVE CONVERSION	PART NUMBER 2006664, B
DATE 2/04/04	REV 1	REVISIONS REV 1 DATE 2/04/04 BY DESCRIPTION VALVE CONVERSION	MATERIAL 6700 BN MARK 2/2/04 SCALE 1:1
SEE SEPARATE B/W			SEE SEPARATE B/W
		 Harsco Track Technologies LIVINGSTON, MI DRAWING NUMBER 1007553, - SHEET 1 OF 1	