



Harsco Track Technologies

Harsco

www.harscotrack.com

SERVICE BULLETIN MAINTENANCE OF WAY EQUIPMENT

DATE: 12-15-2004 **BULLETIN NO:** 04-010

TITLE: SMALL FOOT PEDAL CONVERSIONS

RATING:

<input type="checkbox"/>	DIRECTIVE (Action Is Required)	<input type="checkbox"/>	ALERT (Potential Problem)
<input type="checkbox"/>	INFORMATION (Action Is Optional)	<input checked="" type="checkbox"/>	PRODUCT IMPROVEMENT (Enhance Product)

PRODUCT SERIES / MODEL: 6700S Tampers

SERIAL NO: All Models Serial #152700 and Higher

SUMMARY: Two new foot pedal conversions are available which utilize a physically smaller foot pedal switch. One conversion includes a single foot pedal for indexing. The other conversion includes two foot pedals, one for indexing and one for workhead insertion. Either of these conversions will replace the existing larger foot pedal(s).

OPERATIONAL IMPACT: Installing either of the smaller foot pedal conversions will provide operator convenience.

ACTION: Order one HTT part #2010247 for the Small Index Foot Pedal Conversion. Order one HTT part #2010248 for the Small Index / Workhead Foot Pedal Conversion.
Follow the instructions in this Service Bulletin or the instructions supplied with the Conversion to install the Foot Pedal Conversions on the machine.

CONTACT: To order either of the Foot Pedal Conversions, please contact the HTT Parts Department at the Ludington, MI. facility, (231) 843-3431.
If you have any questions or if we can be of any service, please contact Eugene Russell at the Ludington, MI. facility, (231) 843-3431.

SAFETY INFORMATION



n FOLLOW APPLICABLE RAILROAD LOCKOUT - TAGOUT PROCEDURE TO REMOVE ALL ENERGY SOURCES FROM MACHINE. FAILURE TO COMPLY COULD RESULT IN SEVERE BODILY INJURY.

#2010247 SMALL INDEX FOOT PEDAL CONVERSION

1. Install the Small Index Foot Pedal Conversion per the instructions and notes on attached Drawing #2010247 - Sheet 1, Sheet 2, Sheet 3 and Sheet 4.
2. After installation, start the machine engine and operate the new small index foot pedal to check for proper operation.
3. Insert the Conversion Drawing #2010247 into the Parts Book for future reference.

#2010247 SMALL INDEX FOOT PEDAL CONVERSION PARTS LIST

Note: See Attached Drawing #2010247 - Sheet 1, Sheet 2, Sheet 3 and Sheet 4 for Item Numbers.

ITEM	PART NO.	DESCRIPTION	QTY
1	157614-1	Foot Switch	1
2	4545	Con	1
3	157311-3	Butt Splice - Heat Shrink	2
4	2262	Conduit Lock Nut	1
5	3110	Wire - Rubber Cover, #16-5	84"
6	4413	Ty-Rap	6
7	2010247-DWG	Drawing / Bill of Material.	1
8	2010249	Bracket - Foot Pedal	3
9	157113-1	Pidge Terminal.	5
10	2010269	Conversion Wire Marker Labels.	1
11	2700	Sq Con	1
12	2235	Conduit Lock Nut	1
13	2010669	Guard - Foot Pedal Switch	1
14	250048-191	Screw, Machine, Round Head, #10-24 x 7/8"	6
15	150965-13	Nut - Grade 5 Hex, #10-24.	6
16	150988-7	Washer - Lock, #10 Regular.	6
17	150987-10	Washer - Plain, #12 Wrought.	12

SAFETY INFORMATION



n FOLLOW APPLICABLE RAILROAD LOCKOUT - TAGOUT PROCEDURE TO REMOVE ALL ENERGY SOURCES FROM MACHINE. FAILURE TO COMPLY COULD RESULT IN SEVERE BODILY INJURY.

#2010248 SMALL INDEX / WORKHEAD FOOT PEDAL CONVERSION

1. Install the Small Index / Workhead Foot Pedal Conversion per the instructions and notes on attached Drawing #2010248 - Sheet 1, Sheet 2, Sheet 3, Sheet 4 and Sheet 5.
2. After installation, start the machine engine and operate the new small index and workhead foot pedals to check for proper operation.
3. Insert the Conversion Drawing #2010248 into the Parts Book for future reference.

#2010248 SMALL INDEX / WORKHEAD FOOT PEDAL CONVERSION PARTS LIST

Note: See Attached Drawing #2010248 - Sheet 1, Sheet 2, Sheet 3, Sheet 4 and Sheet 5 for Item Numbers.

ITEM	PART NO.	DESCRIPTION	QTY
1	157614-1	Foot Switch	1
2	5690	Cable, #16-2.	84"
3	5964	Sq Cond.	1
4	—	Not Used	X
5	2235	Conduit Lock Nut	1
6	157311-3	Butt Splice - Heat Shrink	2
7	2010248-DWG	Drawing / Bill of Material.	1
8	3110	Wire - Rubber Cover	84"
9	157113-1	Pidge Terminal.	7
10	2262	Conduit Lock Nut	1
11	4545	Con	1
12	4413	Ty-Rap	12
13	2010249	Bracket - Foot Pedal	6
14	2010270	Conversion Wire Marker Labels.	1
15	2700	Sq Con.	1
16	2235	Conduit Lock Nut	2
17	5571	Squeeze Connector	1
18	2010669	Guard - Foot Pedal Switch	2
19	250048-191	Screw, Machine, Round Head, #10-24 x 7/8"	12
20	150965-13	Nut - Grade 5 Hex, #10-24.	12
21	150988-7	Washer - Lock, #10 Regular.	12
22	150987-10	Washer - Plain, #12 Wrought.	24

THIS PAGE IS INTENTIONALLY BLANK.

© 2004 HARSCO TRACK TECHNOLOGIES, HARSCO CORPORATION

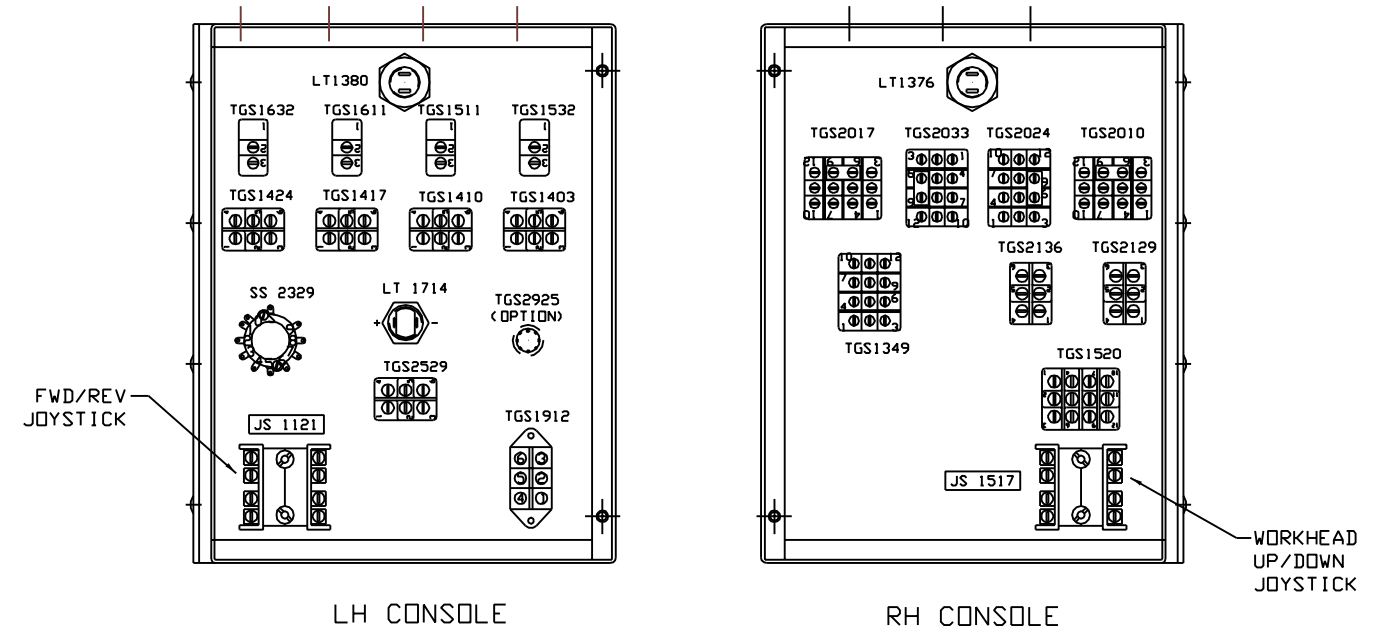
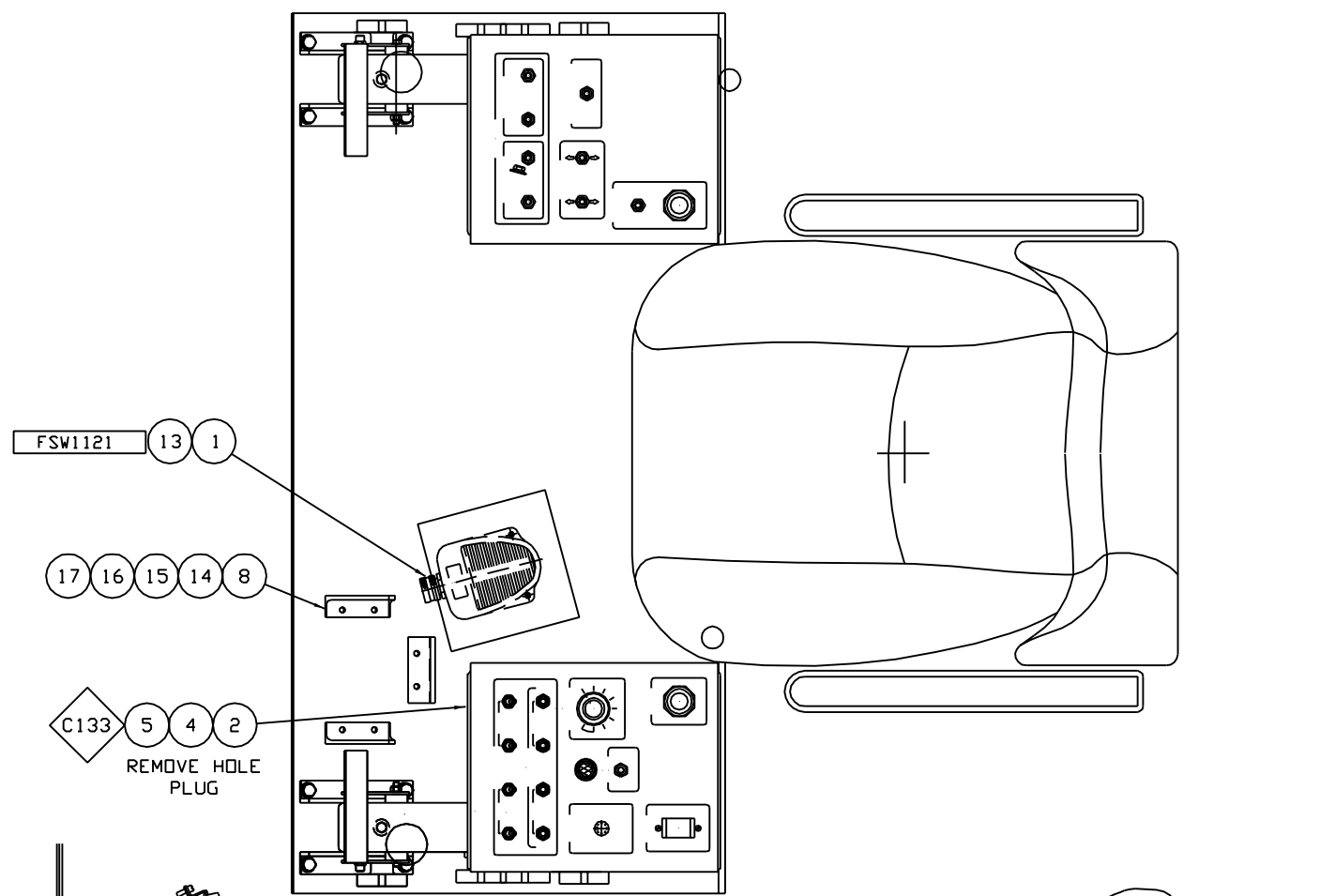
415 North Main Street
Fairmont, MN
56031-1837
Tel: (507) 235-3361
Fax: (507) 235-7370

2401 Edmund Road, Box 20
Cayce-West Columbia, SC
29171-0020
Tel: (803) 822-9160
Fax: (803) 822-7471

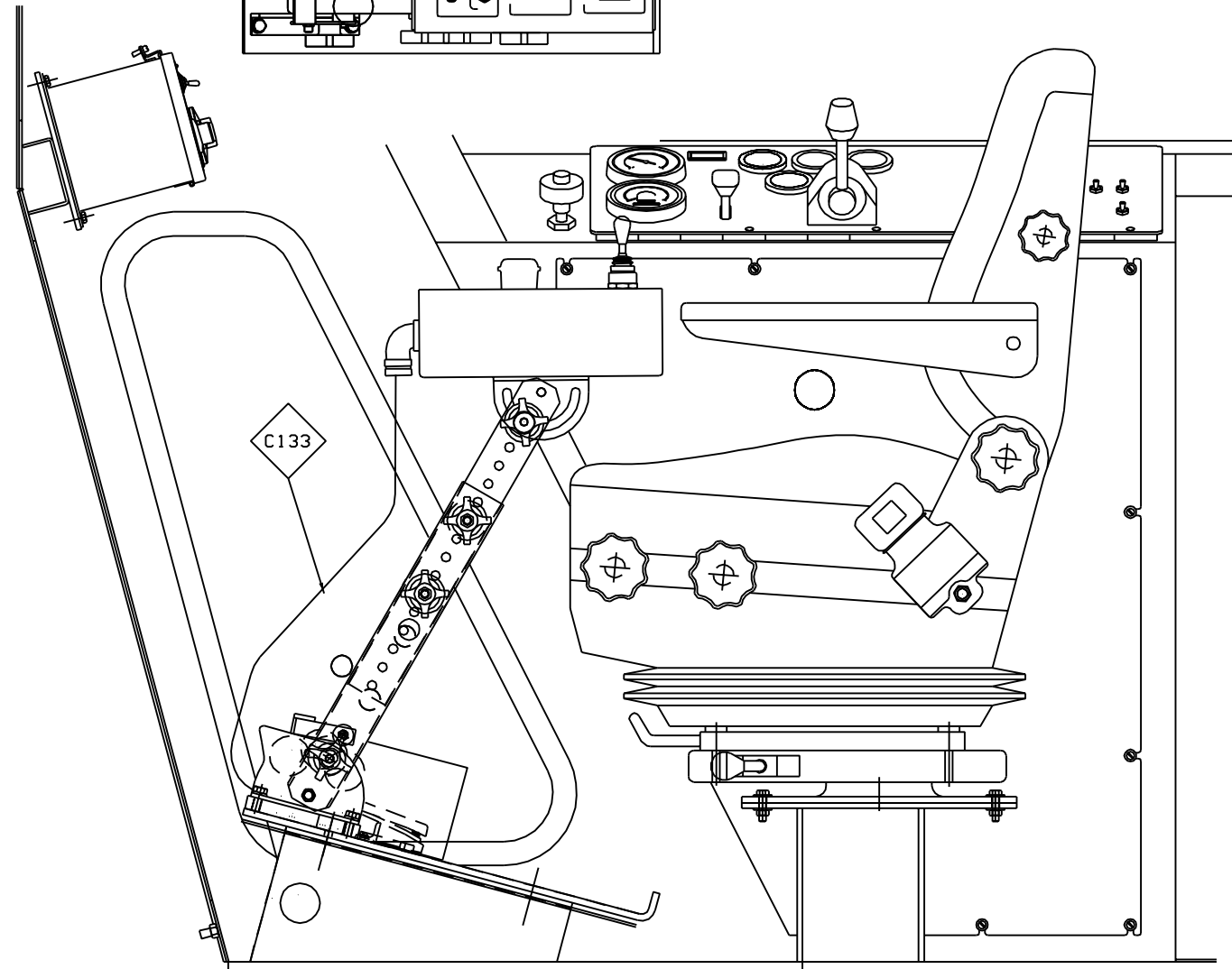
200 South Jackson Road
Ludington, MI
49431
Tel: (231) 843-3431
Fax: (231) 843-1644

Printed In U.S.A.

DUAL CONTROL BOX ASSEMBLY
SEE PAGE 2 FOR SINGLE CONTROL BOX ASSEMBLY



BACK VIEW OF OPERATOR'S CONSOLES
SCALE: .50=1"



6 10 NOT SHOWN

NOTES:

1. OPERATOR'S CONSOLE:

- A. REMOVE HOLE PLUG FROM REAR OF L. H. OPERATOR'S CONSOLE.
- B. INSTALL CABLE AND SQUEEZE CONNECTOR FROM FOOT PEDAL.
- C. TO REPLACE AN EXISTING LARGE FOOT PEDAL FOR A SMALL FOOT PEDAL SEE WIRING INSTRUCTIONS ON PAGE 3.

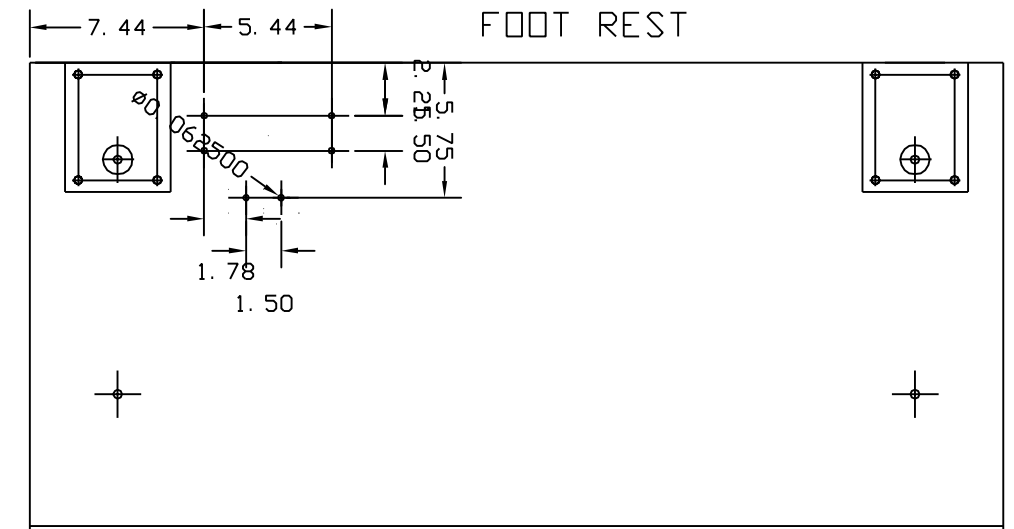
IF THIS IS THE FIRST FOOT PEDAL INSTALLED FOR THIS CONTROL BOX SEE WIRING INSTRUCTIONS ON PAGE 4.

2. FOOT SWITCH CABLE:

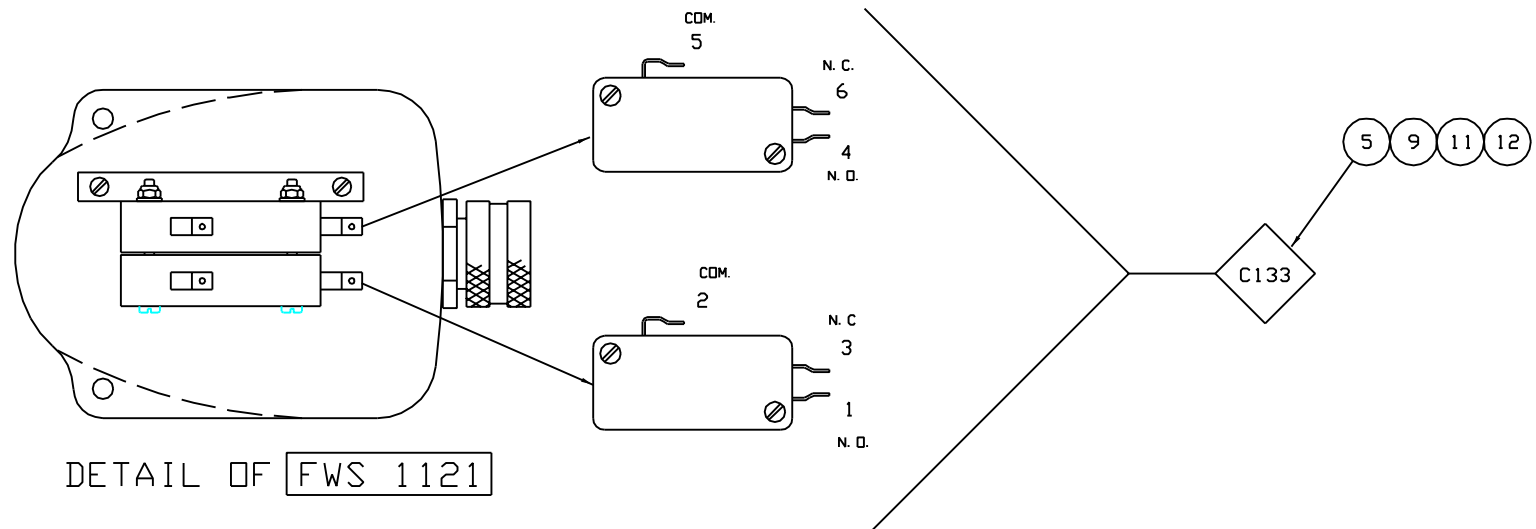
- A. USE TY-RAPS REF #6 TO FASTEN TO EXISTING CABLES AS REQUIRED

- ◆ THIS SYMBOL DENOTES A CABLE ASSEMBLY, SEE ELECTRICAL SECTION FOR PROPER CABLE CHART
- ▭ THIS SYMBOL DENOTES THE DEVICE IDENTIFIER FOR DEVICES FOUND IN THE ELECTRICAL SCHEMATIC

C10006092		12/04	<p>CONFIDENTIAL</p> <p>© COPYRIGHT 2000 HARSCO TRACK TECHNOLOGIES. THIS DRAWING OR DOCUMENT IS THE PROPERTY OF HARSCO TRACK TECHNOLOGIES AND ENDSIDES CONFIDENTIAL INFORMATION, TRADE SECRET INFORMATION, AND/OR KNOW-HOW THAT IS THE PROPERTY OF HARSCO TRACK TECHNOLOGIES. BY ACCEPTING THIS DRAWING OR DOCUMENT, THE RECIPIENT AGREES (1) NOT TO PROVIDE, OR OTHERWISE MAKE AVAILABLE, THE DRAWING OR DOCUMENT, OR ANY INFORMATION OR KNOW-HOW EMBODIED THEREIN, TO ANY THIRD PARTY AND (2) NOT TO REPRODUCE OR USE THE DRAWING OR DOCUMENT TO MANUFACTURE ANY APPARATUS OR DEVICE, WITHOUT THE PRIOR WRITTEN AUTHORIZATION OF HARSCO TRACK TECHNOLOGIES.</p>	<p>UNLESS OTHERWISE SPECIFIED:</p> <p>DO NOT SCALE DRAWING.</p> <p>ALL ENGLISH TWO PLACE DECIMAL DIMENSIONS ± .01</p> <p>ALL ENGLISH THREE PLACE DECIMAL DIMENSIONS ± .002</p> <p>MACHINED SURFACES ± .005</p> <p>ALL METRIC ONE PLACE DECIMAL DIMENSIONS ± .3</p> <p>ALL METRIC TWO PLACE DECIMAL DIMENSIONS ± .05</p> <p>MACHINED SURFACES ± .3 MICROMETERS</p> <p>ALL ENGLISH TWO PLACE WELD DIMENSIONS ± .06</p> <p>ALL ENGLISH THREE PLACE WELD DIMENSIONS ± .030</p> <p>ALL METRIC ONE PLACE WELD DIMENSIONS ± 1.5</p> <p>ALL METRIC TWO PLACE WELD DIMENSIONS ± .5</p> <p>ALL ANGULAR DIMENSIONS ± 30'</p> <p>ALL ANGULAR WELD DIMENSIONS ± 2°</p> <p>BREAK ALL UNNECESSARY SHARP EDGES</p>	DESCRIPTION CONVERSION SMALL FWD INDEX FOOT PEDAL	PART NUMBER 2010247, A	<p>Harsco Track Technologies</p> <p>a harsco company</p> <p>LUDINGTON, MI</p>	DRAWING NUMBER 1008754, A	SHEET 1 OF 4
C1 OR S1 NUMBER	DATE MONTH/YEAR	MODEL 6700S			MATERIAL SEE SEPARATE B/M				

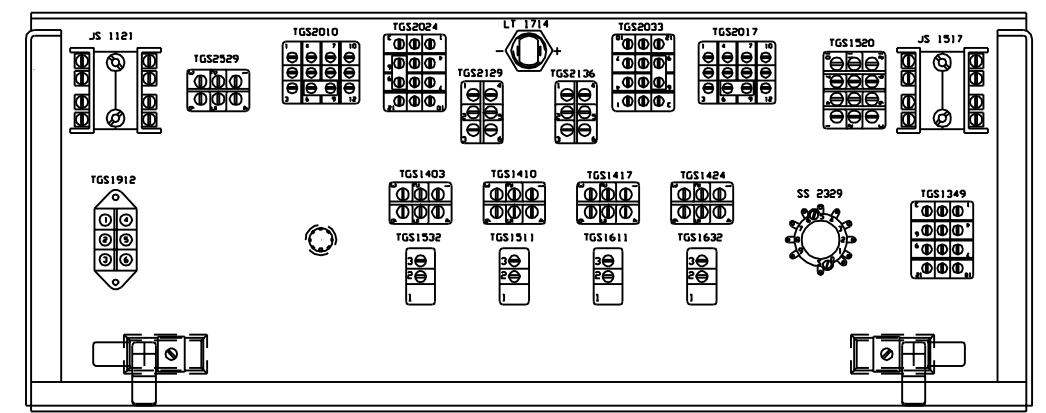
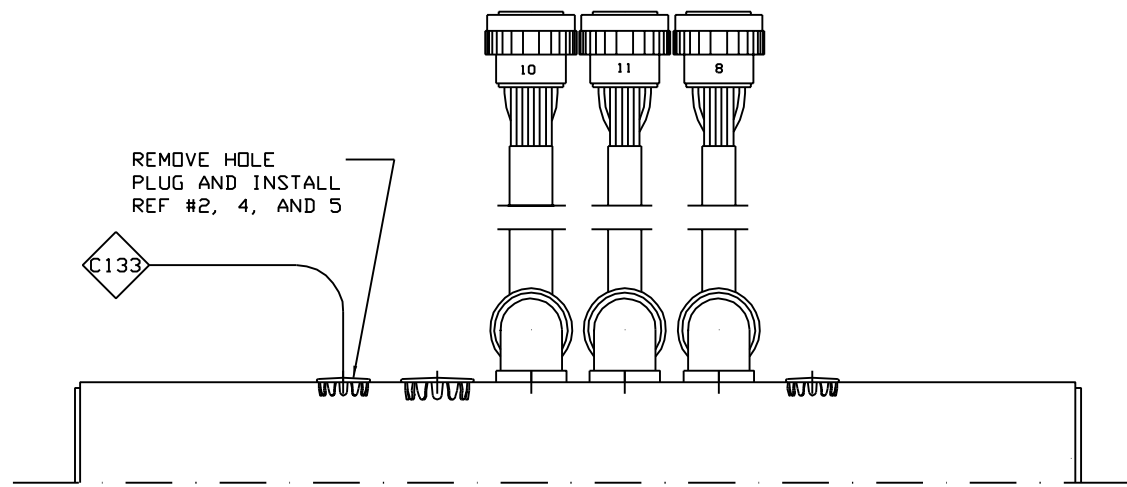


FOOT REST MODIFICATIONS



DETAIL OF FWS 1121

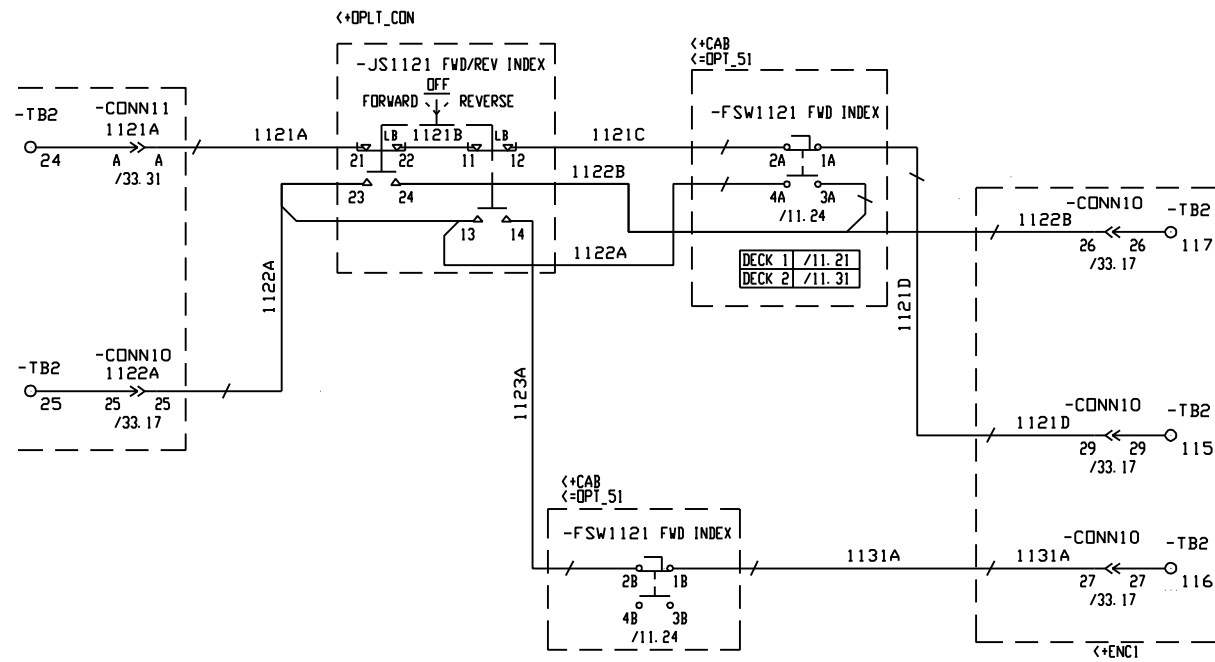
SCALE: FULL
FWD INDEX



OPEN VIEW OF SINGLE OPERATOR'S CONSOLE
SCALE: .50" = 1"

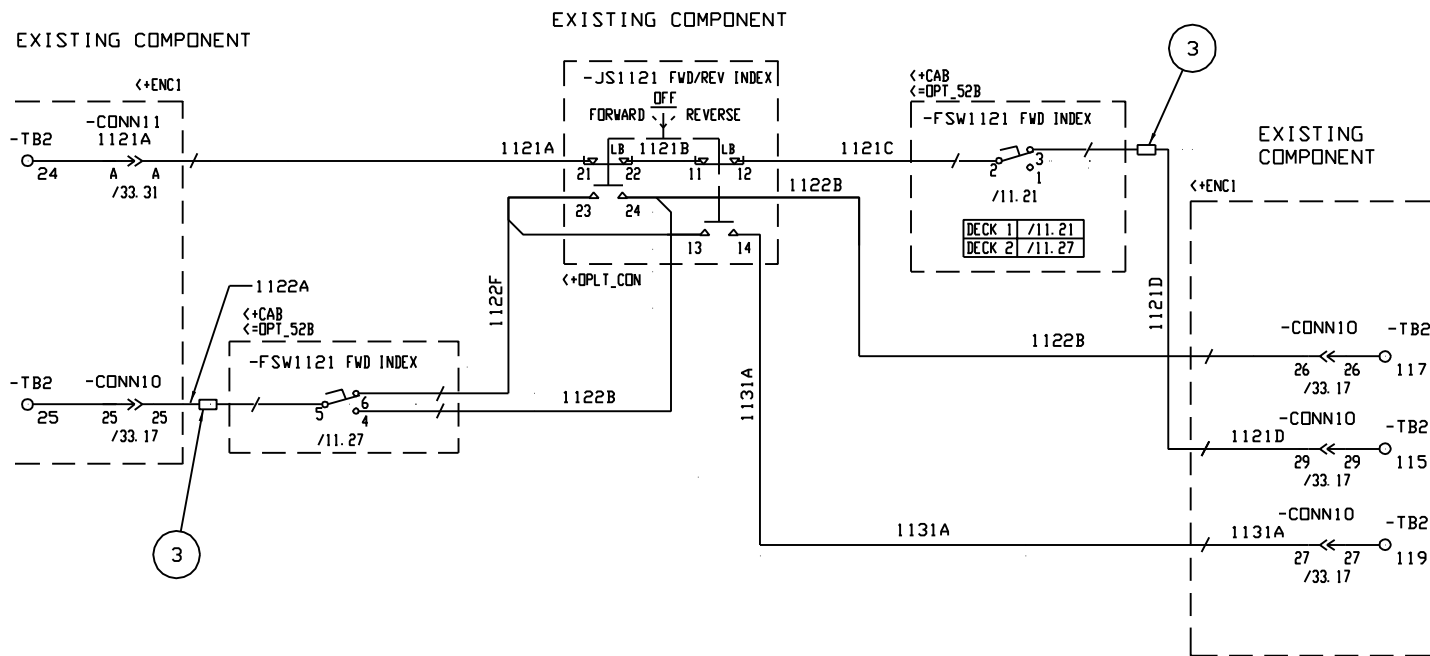
C10006092		12/04	<p>CONFIDENTIAL</p> <p>© COPYRIGHT 2000 HARSICO TRACK TECHNOLOGIES. THIS DRAWING OR DOCUMENT IS THE PROPERTY OF HARSICO TRACK TECHNOLOGIES AND ENHODIES CONFIDENTIAL INFORMATION, TRADE SECRET INFORMATION, AND/OR KNOW-HOW THAT IS THE PROPERTY OF HARSICO TRACK TECHNOLOGIES. BY ACCEPTING THIS DRAWING OR DOCUMENT, THE RECIPIENT AGREES (1) NOT TO PROVIDE, OR OTHERWISE MAKE AVAILABLE, THE DRAWING OR DOCUMENT, OR ANY INFORMATION OR KNOW-HOW EMBODIED THEREIN, TO ANY THIRD PARTY AND (2) NOT TO REPRODUCE OR USE THE DRAWING OR DOCUMENT TO MANUFACTURE ANY APPARATUS OR DEVICE, WITHOUT THE PRIOR WRITTEN AUTHORIZATION OF HARSICO TRACK TECHNOLOGIES.</p>	<p>UNLESS OTHERWISE SPECIFIED: DO NOT SCALE DRAWING. ALL ENGLISH TWO PLACE DECIMAL DIMENSIONS ± .01 ALL ENGLISH THREE PLACE DECIMAL DIMENSIONS ± .002 MACHINED SURFACES ± .004 MILLIMETERS ALL METRIC ONE PLACE DECIMAL DIMENSIONS ± .3 ALL METRIC TWO PLACE DECIMAL DIMENSIONS ± .05 MACHINED SURFACES ± .3 MICROMETERS ALL ENGLISH TWO PLACE WELD DIMENSIONS ± .06 ALL ENGLISH THREE PLACE WELD DIMENSIONS ± .030 ALL METRIC ONE PLACE WELD DIMENSIONS ± .75 ALL METRIC TWO PLACE WELD DIMENSIONS ± .30 ALL ANGULAR DIMENSIONS ± .30° ALL ANGULAR WELD DIMENSIONS ± 2° BREAK ALL UNNECESSARY SHARP EDGES</p>	DESCRIPTION CONVERSION SMALL FWD INDEX FOOT PEDAL	PART NUMBER 2010247, A	<p>Harsico Track Technologies a harsico company LUDINGTON, MI</p>
S10002819	10/04	MODEL 6700S DRAWN BDR DATE 10/05/04 SCALE .25=1"			MATERIAL SEE SEPARATE B/M	DRAWING NUMBER 1008754, A	

BEFORE CONVERSION
CONTROL BOX, LARGE FOOT PEDAL INSTALLED



INSTRUCTIONS FOR REPLACING LARGE INDEX FOOT
PEDAL WITH SMALL FOOT PEDAL

AFTER CONVERSION
SMALL FOOT PEDAL



INDEX FOOT PEDAL
CONVERSION P/N 2010247

INSERT IN FRONT OF PAGE 11 OF SCHEMATIC IN PARTS BOOK

WIRING INDEX FOOT PEDAL TO OPERATORS CONSOLE:

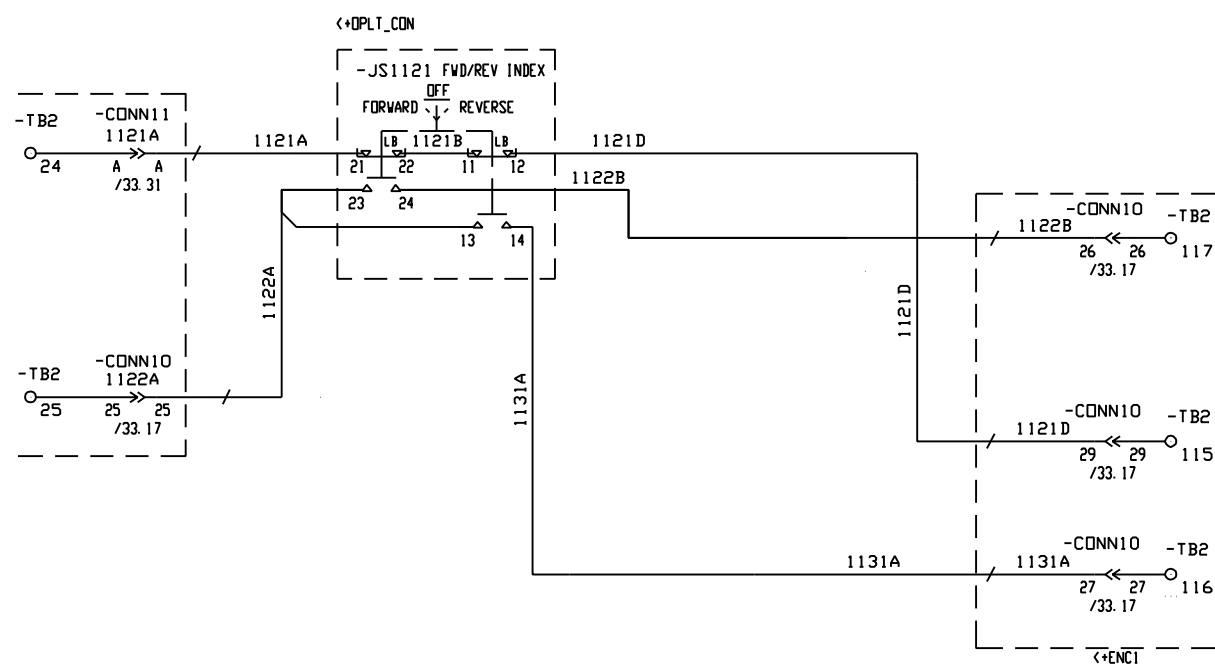
FSW1121 FORWARD INDEX CONTROL

1. REMOVE OLD FOOTPEDAL AND CABLE
2. REMOVE WIRE 1122A FROM JS1121: 23,
LEAVE JUMPER BETWEEN JS1121: 23 AND JS1121: 13
3. REMOVE CABLE CLAMP FROM FOOT SWITCH AND INSTALL
REF #11 AND #12
4. FSW1121: 1 NOT USED
5. CONNECT RED WIRE FROM FSW1121: 2 TO JS1121: 12
AND LABEL AS 1121C
6. BUTT SPLICE WHITE WIRE FROM FSW1121: 3 TO
WIRE 1121D INSIDE OF CONTROL BOX
7. CONNECT BLACK WIRE FROM FSW1121: 4 TO JS1121: 24
AND LABEL AS 1122B
8. BUTT SPLICE GREEN WIRE FROM FSW1121: 5 TO
WIRE 1122A INSIDE OF CONTROL BOX
9. CONNECT ORANGE WIRE FROM FSW1121: 6 TO JS1121: 23
AND LABEL AS 1122F
10. PLACE THIS PAGE IN PARTS BOOK ELECTRICAL SCHEMATIC

CUT HERE

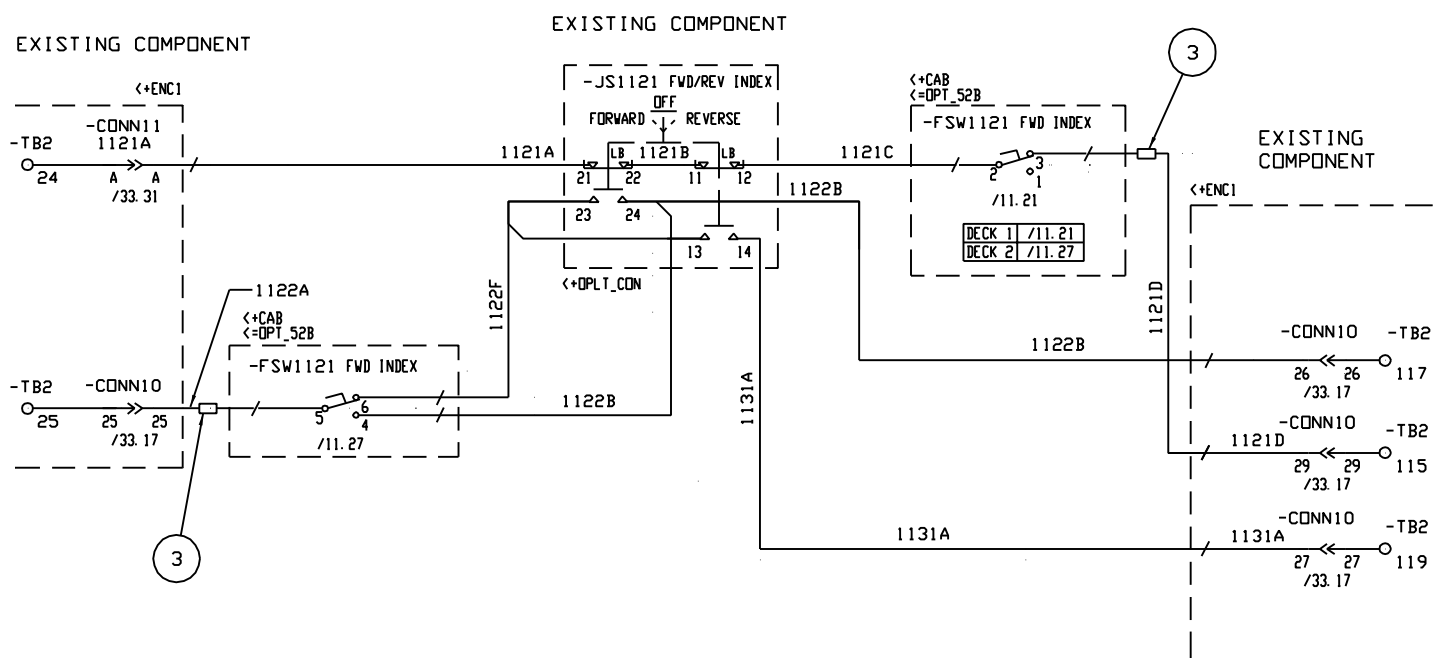
C10006092		12/04	CONFIDENTIAL © COPYRIGHT 2000 HARSOCO TRACK TECHNOLOGIES. THIS DRAWING OR DOCUMENT IS THE PROPERTY OF HARSOCO TRACK TECHNOLOGIES AND ENDS/IS CONFIDENTIAL INFORMATION. TRADE SECRET INFORMATION, AND/OR KNOW-HOW THAT IS THE PROPERTY OF HARSOCO TRACK TECHNOLOGIES. BY ACCEPTING THIS DRAWING OR DOCUMENT, THE RECIPIENT AGREES (1) NOT TO PROVIDE, OR OTHERWISE MAKE AVAILABLE, THE DRAWING OR DOCUMENT, OR ANY INFORMATION OR KNOW-HOW EMBODIED THEREIN, TO ANY THIRD PARTY AND (2) NOT TO REPRODUCE OR USE THE DRAWING OR DOCUMENT TO MANUFACTURE ANY APPARATUS OR DEVICE, WITHOUT THE PRIOR WRITTEN AUTHORIZATION OF HARSOCO TRACK TECHNOLOGIES.		UNLESS OTHERWISE SPECIFIED: DO NOT SCALE DRAWING. ALL ENGLISH TWO PLACE DECIMAL DIMENSIONS ± 0.1 ALL ENGLISH THREE PLACE DECIMAL DIMENSIONS ± 0.002 MACHINED SURFACES ± 0.010 MILLI METERS ALL METRIC ONE PLACE DECIMAL DIMENSIONS ± 0.3 ALL METRIC TWO PLACE DECIMAL DIMENSIONS ± 0.05 MACHINED SURFACES ± 0.025 MILLI METERS ALL ENGLISH TWO PLACE WELD DIMENSIONS ± 0.06 ALL ENGLISH THREE PLACE WELD DIMENSIONS ± 0.030 ALL METRIC ONE PLACE WELD DIMENSIONS ± 1.5 ALL METRIC TWO PLACE WELD DIMENSIONS ± 0.5 ALL ANGULAR DIMENSIONS ± 30' ALL ANGULAR WELD DIMENSIONS ± 2° BREAK ALL UNNECESSARY SHARP EDGES		DESCRIPTION CONVERSION SMALL FWD INDEX FOOT PEDAL	PART NUMBER 2010247, A	Harsoco Track Technologies a harsoco company LUDINGTON, MI	
S10002819		10/04			MODEL 6700S					
C1 OR S1 NUMBER		DATE MONTH/YEAR			DRAWN BDR	DATE 10/05/04	MATERIAL	SEE SEPARATE B/M	DRAWING NUMBER 1008754, A	SHEET 3 OF 4
					SCALE .25=1"					

BEFORE CONVERSION
CONTROL BOX, NO FOOTPEDAL INSTALLED



INSTRUCTIONS FOR INSTALLING INDEX FOOT PEDAL
TO CONTROL BOX THAT DID NOT HAVE ONE BEFORE

AFTER CONVERSION
SMALL FOOT PEDAL



WIRING INDEX FOOT PEDAL TO OPERATORS CONSOLE:

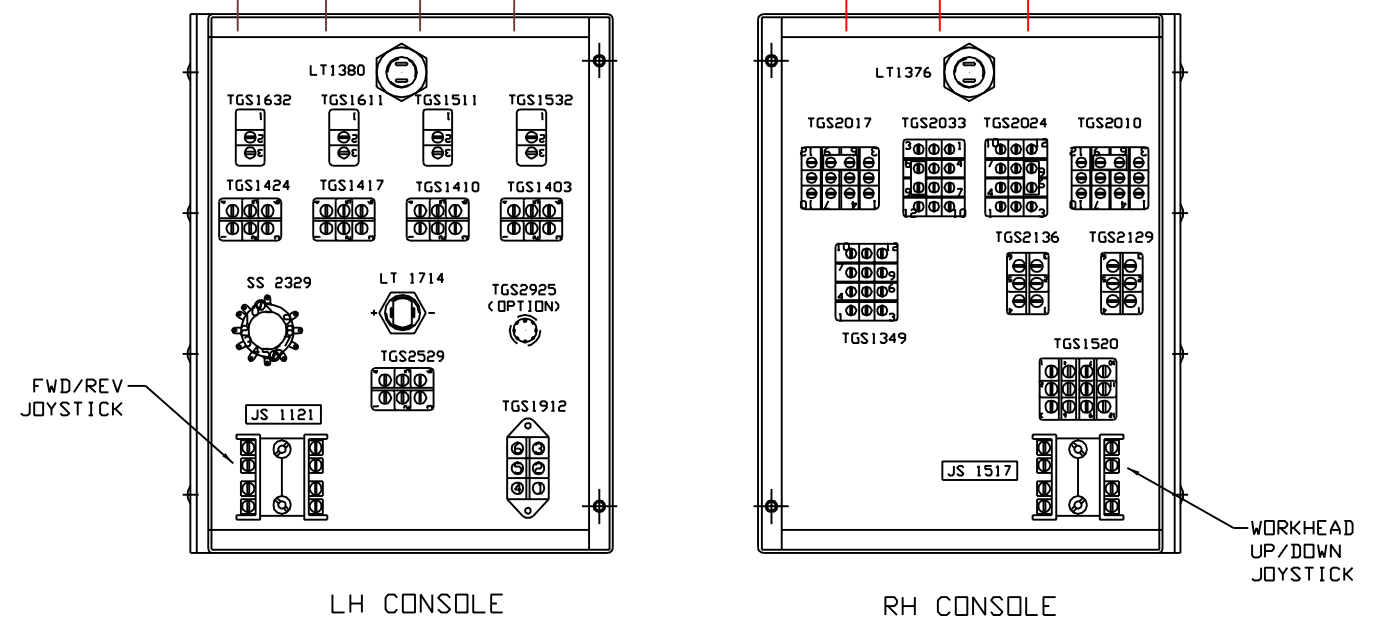
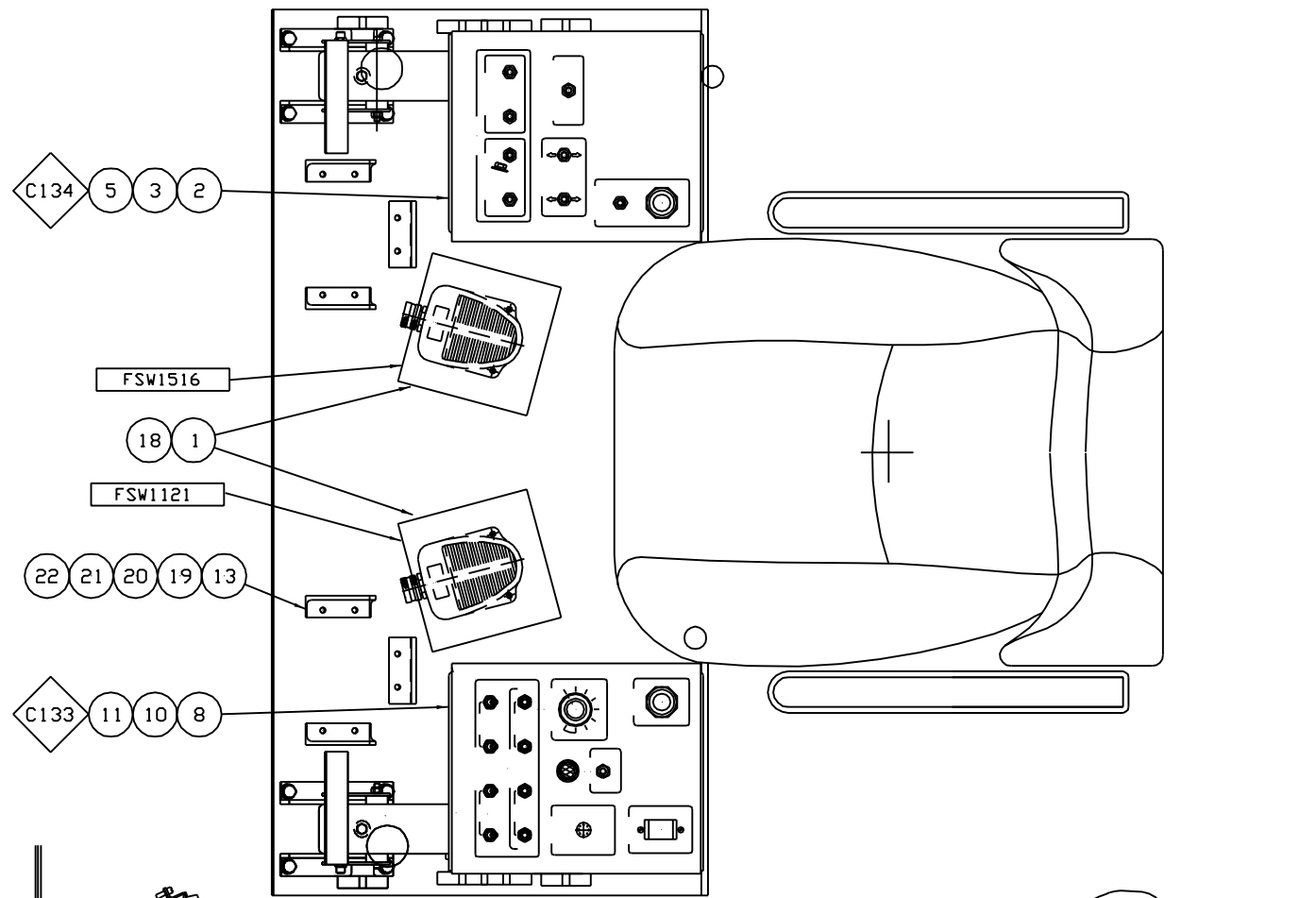
- FSW1121 FORWARD INDEX CONTROL
1. REMOVE WIRE 1121D FROM JS1121: 12
 2. REMOVE WIRE 1122A FROM JS1121: 23,
LEAVE JUMPER BETWEEN JS1121: 23 AND JS1121: 13
 3. REMOVE CABLE CLAMP FROM FOOT SWITCH AND INSTALL
REF #11 AND #12
 4. FSW1121: 1 NOT USED
 5. CONNECT RED WIRE FROM FSW1121: 2 TO JS1121: 12
AND LABEL AS 1121C
 6. BUTT SPLICE WHITE WIRE FROM FSW1121: 3 TO
WIRE 1121D INSIDE OF CONTROL BOX
 7. CONNECT BLACK WIRE FROM FSW1121: 4 TO JS1121: 24
AND LABEL AS 1122B
 8. BUTT SPLICE GREEN WIRE FROM FSW1121: 5 TO
WIRE 1122A INSIDE OF CONTROL BOX
 9. CONNECT ORANGE WIRE FROM FSW1121: 6 TO JS1121: 23
AND LABEL AS 1122F
 10. PLACE THIS PAGE IN PARTS BOOK ELECTRICAL SCHEMATIC

INDEX FOOT PEDAL
CONVERSION P/N 2010247

INSERT IN FRONT OF PAGE 11 OF SCHEMATIC IN PARTS BOOK

C10006092		12/04	CONFIDENTIAL © COPYRIGHT 2000 HARSCO TRACK TECHNOLOGIES. THIS DRAWING OR DOCUMENT IS THE PROPERTY OF HARSCO TRACK TECHNOLOGIES AND EMBODIES CONFIDENTIAL INFORMATION, TRADE SECRET INFORMATION, AND/OR KNOW-HOW THAT IS THE PROPERTY OF HARSCO TRACK TECHNOLOGIES. BY ACCEPTING THIS DRAWING OR DOCUMENT, THE RECIPIENT AGREES (1) NOT TO PROVIDE, OR OTHERWISE MAKE AVAILABLE, THE DRAWING OR DOCUMENT, OR ANY INFORMATION OR KNOW-HOW EMBODIED THEREIN, TO ANY THIRD PARTY AND (2) NOT TO REPRODUCE OR USE THE DRAWING OR DOCUMENT TO MANUFACTURE ANY APPARATUS OR DEVICE, WITHOUT THE PRIOR WRITTEN AUTHORIZATION OF HARSCO TRACK TECHNOLOGIES.		UNLESS OTHERWISE SPECIFIED: DO NOT SCALE DRAWING. ALL ENGLISH TWO PLACE DECIMAL DIMENSIONS ± 0.01 ALL ENGLISH THREE PLACE DECIMAL DIMENSIONS ± 0.002 MACHINED SURFACES ± 0.0010 INCHES ALL METRIC ONE PLACE DECIMAL DIMENSIONS ± 0.3 ALL METRIC TWO PLACE DECIMAL DIMENSIONS ± 0.05 MACHINED SURFACES ± 0.025 MILLIMETERS ALL ENGLISH TWO PLACE WELD DIMENSIONS ± 0.06 ALL ENGLISH THREE PLACE WELD DIMENSIONS ± 0.030 ALL METRIC ONE PLACE WELD DIMENSIONS ± 1.5 ALL METRIC TWO PLACE WELD DIMENSIONS ± 0.5 ALL ANGULAR DIMENSIONS ± 30' ALL ANGULAR WELD DIMENSIONS ± 2° BREAK ALL UNNECESSARY SHARP EDGES		DESCRIPTION CONVERSION SMALL FWD INDEX FOOT PEDAL	PART NUMBER 2010247, A	Harsco Track Technologies a harsco company LUDINGTON, MI	
S10002819		10/04			MODEL 6700S					
C1 OR S1 NUMBER		DATE MONTH/YEAR			DRAWN BDR	DATE 10/05/04	MATERIAL SEE SEPARATE B/M	DRAWING NUMBER 1008754, A	SHEET 4 OF 4	
					SCALE .25=1"					

DUAL CONTROL BOX ASSEMBLY
SEE PAGE 2 FOR SINGLE CONTROL BOX ASSEMBLY



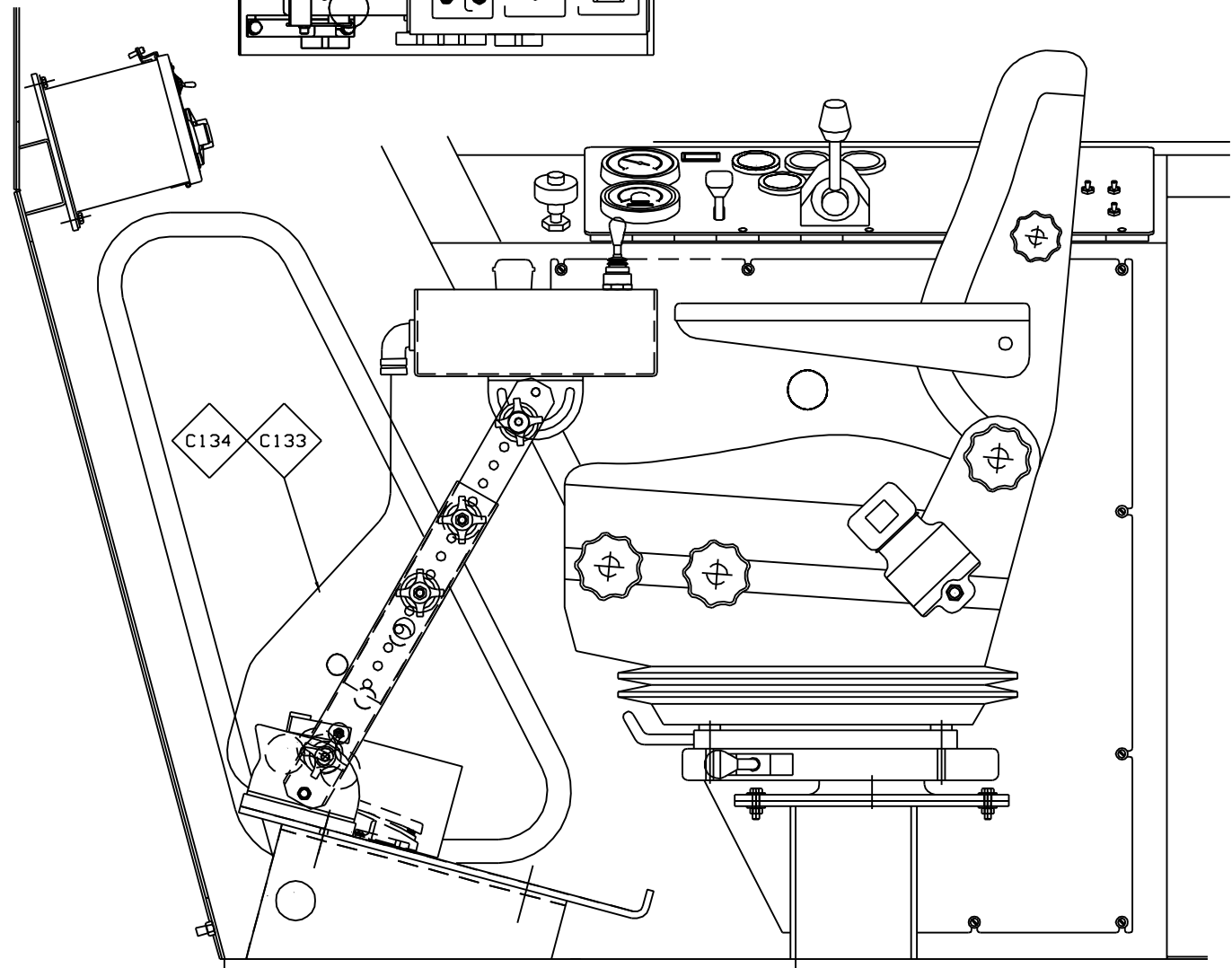
BACK VIEW OF OPERATOR'S CONSOLES
SCALE: .50=1"

(12) (14) NOT SHOWN

NOTES:

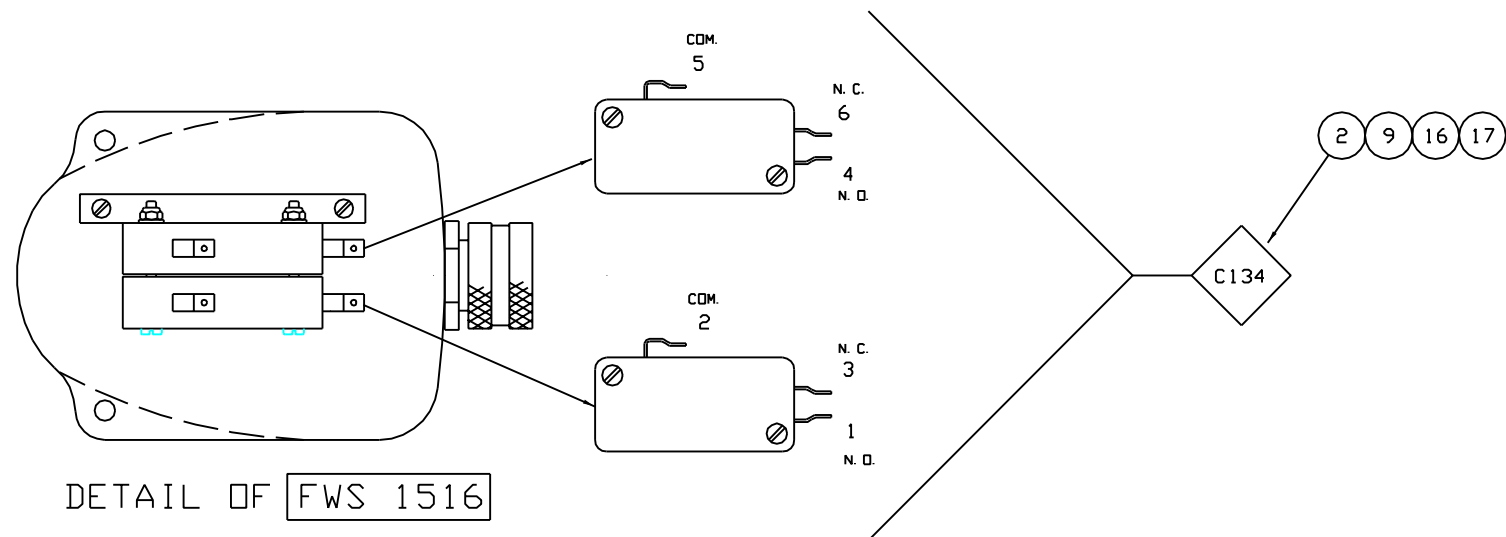
- I. OPERATOR'S CONSOLE:
 - A. REMOVE HOLE PLUGS FROM REAR OF OPERATOR'S CONSOLES.
 - B. INSTALL CABLES AND SQUEEZE CONNECTORS.
 - C. TO REPLACE AN EXISTING LARGE INDEX FOOT PEDAL FOR A SMALL FOOT PEDAL SEE WIRING INSTRUCTIONS ON PAGE 3
IF THIS IS THE FIRST FOOT PEDAL INSTALLED FOR THIS CONTROL BOX SEE WIRING INSTRUCTIONS ON PAGE 4.
 - D. TO REPLACE/INSTALL A WORKHEAD FOOT PEDAL SEE WIRING INSTRUCTIONS ON PAGE 5
2. FOOT SWITCH CABLE:
 - A. USE TY-RAPS REF #12 TO FASTEN TO EXISTING CABLES AS REQUIRED

◆ THIS SYMBOL DENOTES A CABLE ASSEMBLY, SEE ELECTRICAL SECTION FOR PROPER CABLE CHART
 □ THIS SYMBOL DENOTES THE DEVICE IDENTIFIER FOR DEVICES FOUND IN THE ELECTRICAL SCHEMATIC



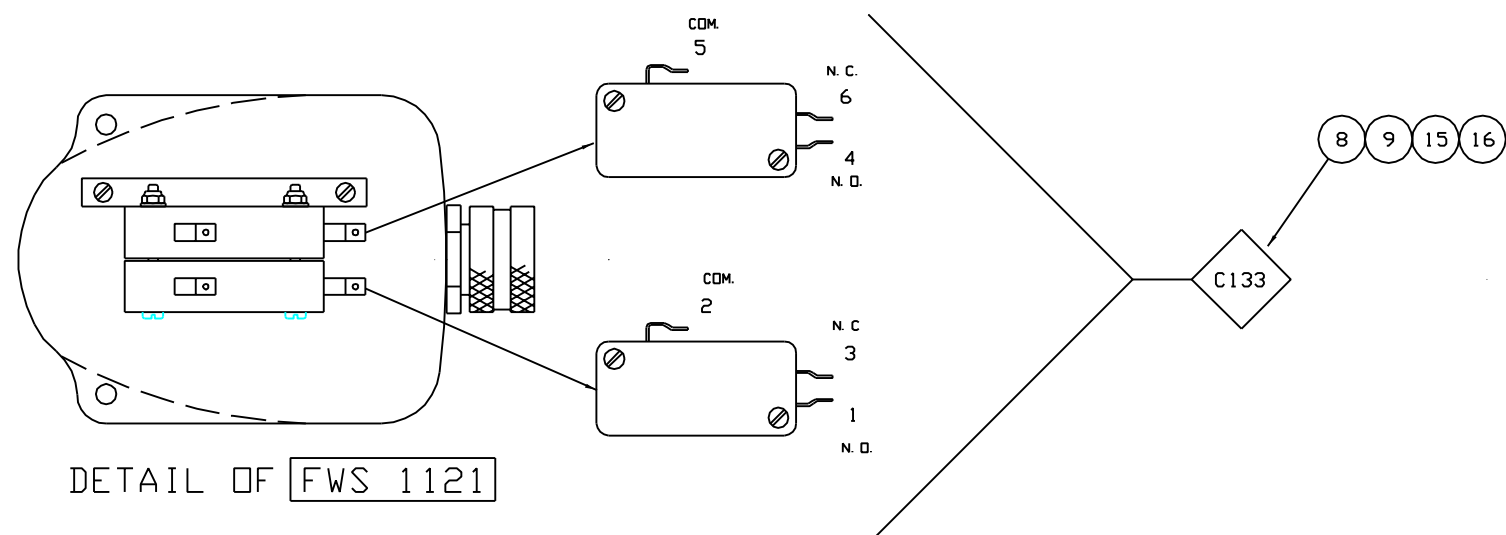
SIMILAR TO 2006302

C10006092		12/04	CONFIDENTIAL © COPYRIGHT 2003 HARSCO TRACK TECHNOLOGIES. THIS DRAWING OR DOCUMENT IS THE PROPERTY OF HARSCO TRACK TECHNOLOGIES AND EMBODIES CONFIDENTIAL INFORMATION, TRADE SECRET INFORMATION, AND/OR KNOW-HOW THAT IS THE PROPERTY OF HARSCO TRACK TECHNOLOGIES. BY ACCEPTING THIS DRAWING OR DOCUMENT, THE RECIPIENT AGREES (1) NOT TO PROVIDE, OR OTHERWISE MAKE AVAILABLE, THE DRAWING OR DOCUMENT, OR ANY INFORMATION OR KNOW-HOW EMBODIED THEREIN, TO ANY THIRD PARTY AND (2) NOT TO REPRODUCE OR USE THE DRAWING OR DOCUMENT TO MANUFACTURE ANY APPARATUS OR DEVICE, WITHOUT THE PRIOR WRITTEN AUTHORIZATION OF HARSCO TRACK TECHNOLOGIES.	UNLESS OTHERWISE SPECIFIED: DO NOT SCALE DRAWING. ALL ENGLISH TWO PLACE DECIMAL DIMENSIONS ± .01 ALL ENGLISH THREE PLACE DECIMAL DIMENSIONS ± .002 ALL METRIC SURFACES ± .03 MILLIMETERS ALL METRIC ONE PLACE DECIMAL DIMENSIONS ± .3 ALL METRIC TWO PLACE DECIMAL DIMENSIONS ± .05 MACHINED SURFACES ± .2 MICROMETERS ALL ENGLISH TWO PLACE WELD DIMENSIONS ± .030 ALL ENGLISH THREE PLACE WELD DIMENSIONS ± .030 ALL METRIC ONE PLACE WELD DIMENSIONS ± .5 ALL METRIC TWO PLACE WELD DIMENSIONS ± .5 ALL ANGULAR DIMENSIONS ± 30° ALL ANGULAR WELD DIMENSIONS ± 2° BREAK ALL UNNECESSARY SHARP EDGES	DESCRIPTION CONVERSION SM INDEX/VKHD FOOT PEDAL	PART NUMBER 2010248, A	Harsco Track Technologies a harsco company LUDINGTON, MI	DRAWING NUMBER 1008755, A	SHEET 1 OF 5
S10002819	10/04	MODEL 6700S DRAWN BDR DATE 10/05/04 SCALE .25=1"			MATERIAL SEE SEPARATE B/M				
C1 OR S1 NUMBER	DATE MONTH/YEAR								



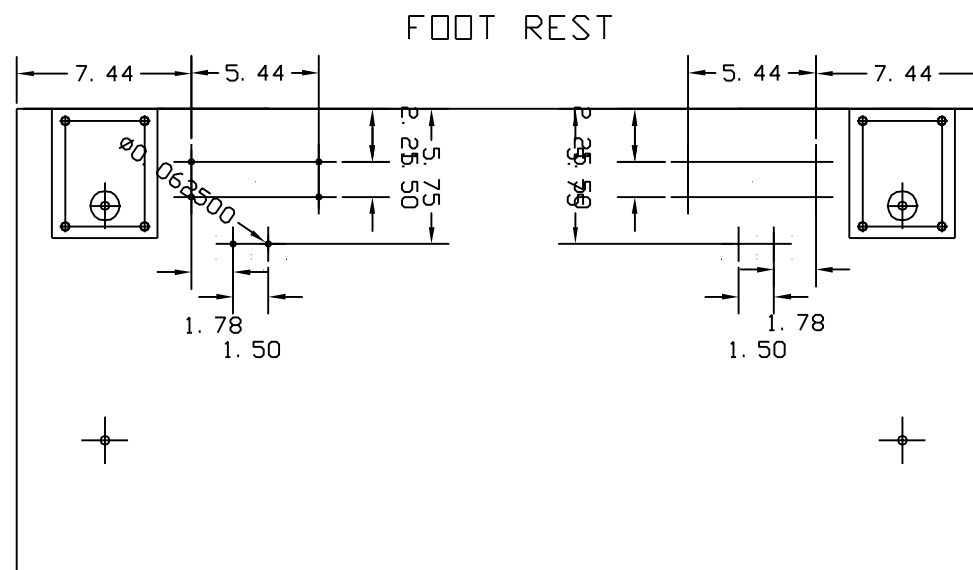
DETAIL OF FWS 1516

SCALE: FULL
WORKHEAD CONTROL

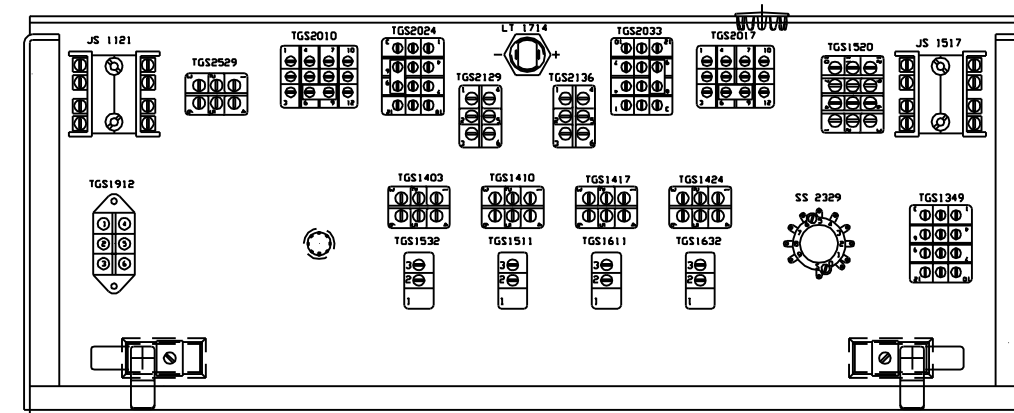
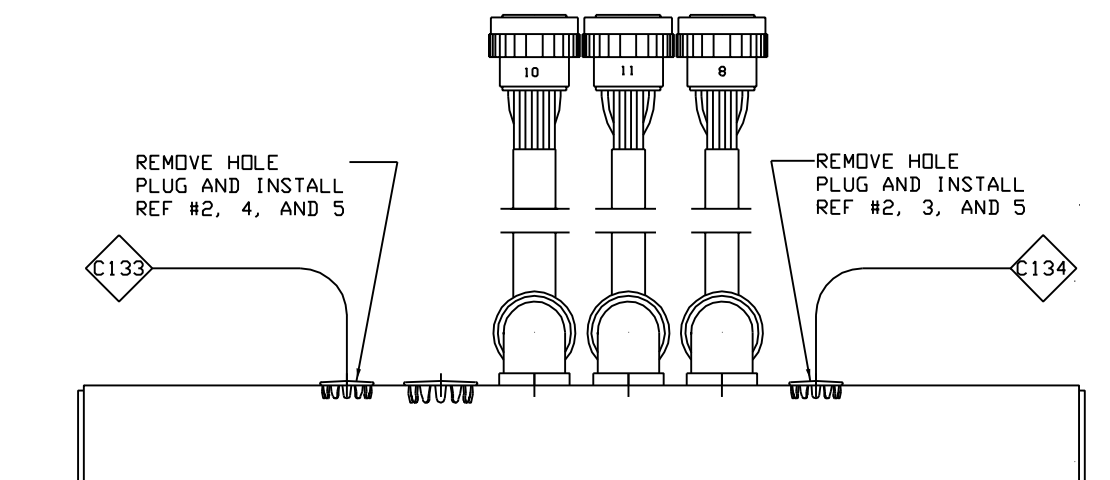


DETAIL OF FWS 1121

SCALE: FULL
FWD INDEX



FOOT REST MODIFICATIONS

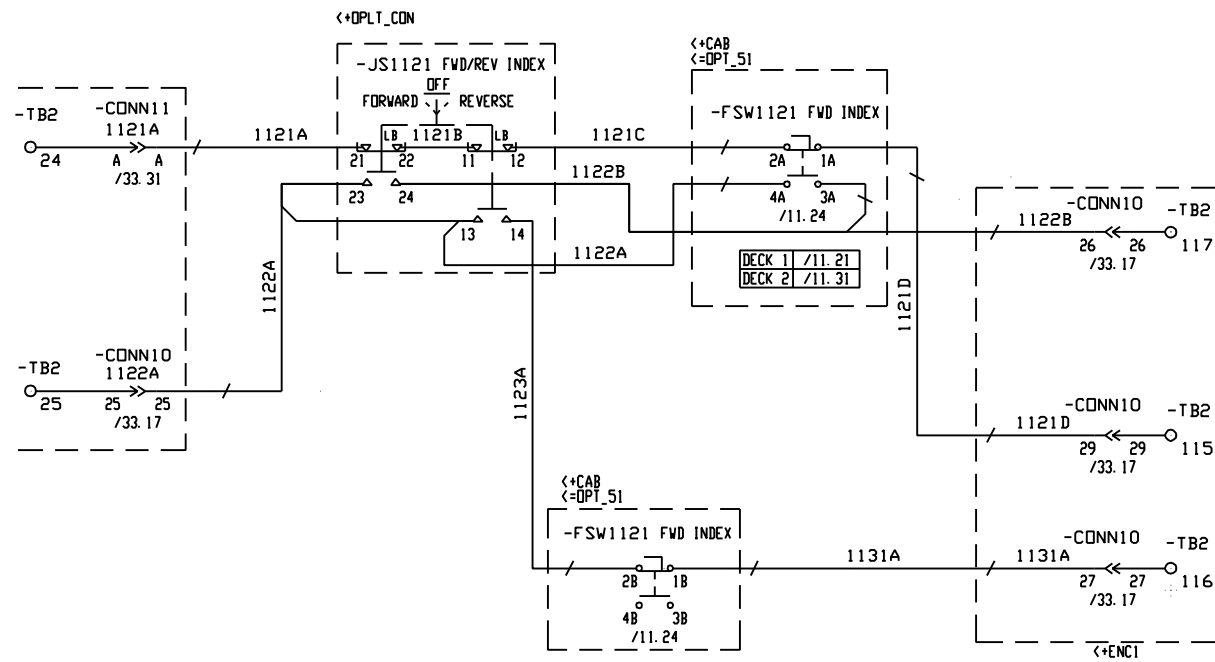


OPEN VIEW OF SINGLE OPERATOR'S CONSOLE

SCALE: .50" = 1"

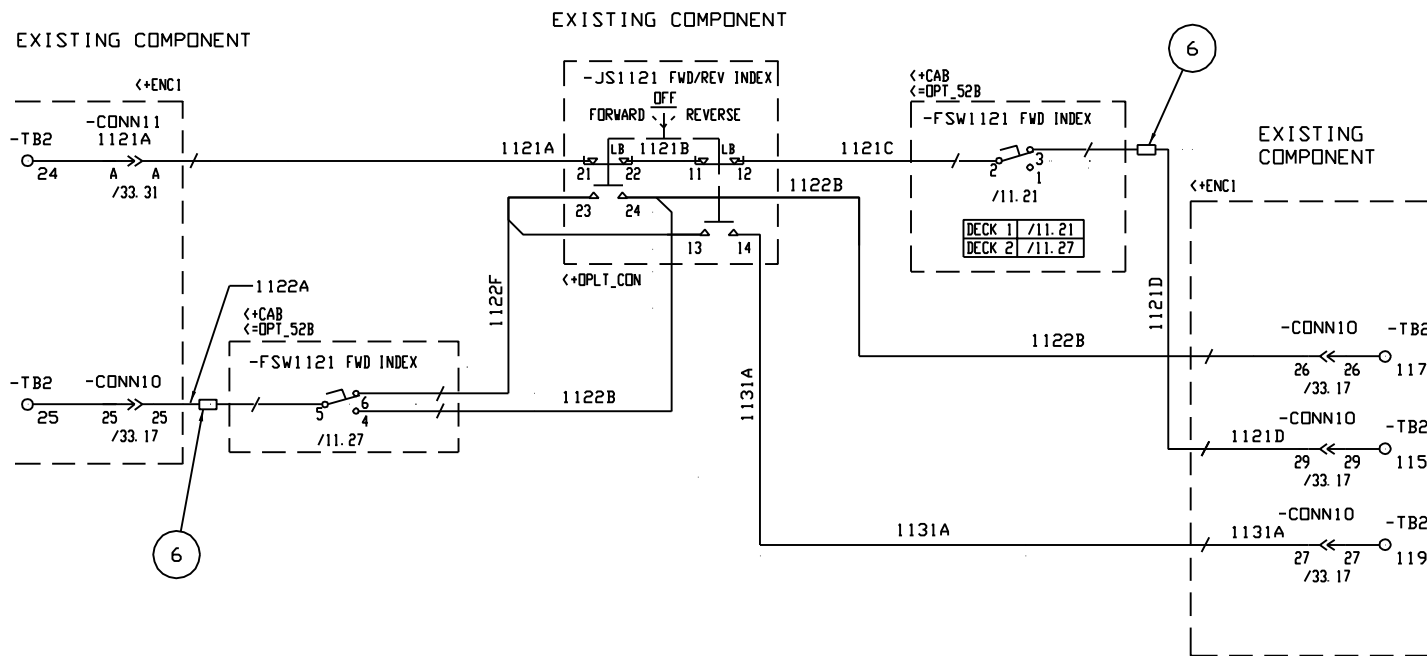
C10006092	12/04	CONFIDENTIAL © COPYRIGHT 2003 HARSCO TRACK TECHNOLOGIES. THIS DRAWING OR DOCUMENT IS THE PROPERTY OF HARSCO TRACK TECHNOLOGIES AND CONTAINS CONFIDENTIAL INFORMATION, TRADE SECRET INFORMATION, AND/OR KNOW-HOW THAT IS THE PROPERTY OF HARSCO TRACK TECHNOLOGIES. BY ACCEPTING THIS DRAWING OR DOCUMENT, THE RECIPIENT AGREES TO NOT PROVIDE, OR OTHERWISE MAKE AVAILABLE, THE DRAWING OR DOCUMENT, OR ANY INFORMATION OR KNOW-HOW EMBODIED THEREIN, TO ANY THIRD PARTY AND TO NOT REPRODUCE OR USE THE DRAWING OR DOCUMENT TO MANUFACTURE ANY APPARATUS OR DEVICE, WITHOUT THE PRIOR WRITTEN AUTHORIZATION OF HARSCO TRACK TECHNOLOGIES.	UNLESS OTHERWISE SPECIFIED: DO NOT SCALE DRAWING. ALL ENGLISH TWO PLACE DECIMAL DIMENSIONS ± .01 ALL ENGLISH THREE PLACE DECIMAL DIMENSIONS ± .002 MACHINED SURFACES ± .004 MILLIMETERS ALL METRIC ONE PLACE DECIMAL DIMENSIONS ± .3 ALL METRIC TWO PLACE DECIMAL DIMENSIONS ± .05 MACHINED SURFACES ± .3 MICROMETERS ALL ENGLISH THREE PLACE WELD DIMENSIONS ± .030 ALL METRIC ONE PLACE WELD DIMENSIONS ± .30 ALL METRIC TWO PLACE WELD DIMENSIONS ± .3 ALL ANGULAR DIMENSIONS ± 30° ALL ANGULAR WELD DIMENSIONS ± 2° BREAK ALL UNNECESSARY SHARP EDGES	DESCRIPTION CONVERSION SM INDEX/WKHD FOOT PEDAL	PART NUMBER 2010248, A	Harsco Track Technologies a harsco company LUDINGTON, MI
				MODEL 6700S	MATERIAL SEE SEPARATE B/M	
S10002819	10/04			DATE 10/05/04		SHEET 2 OF 5
C1 OR S1 NUMBER	DATE MONTH/YEAR			SCALE .25=1"		

BEFORE CONVERSION
LARGE FOOT PEDAL



INSTRUCTIONS FOR REPLACING LARGE INDEX FOOT
PEDAL WITH SMALL FOOT PEDAL

AFTER CONVERSION
SMALL FOOT PEDAL



WIRING INDEX FOOT PEDAL TO OPERATORS CONSOLE:

FSW1121 FORWARD INDEX CONTROL

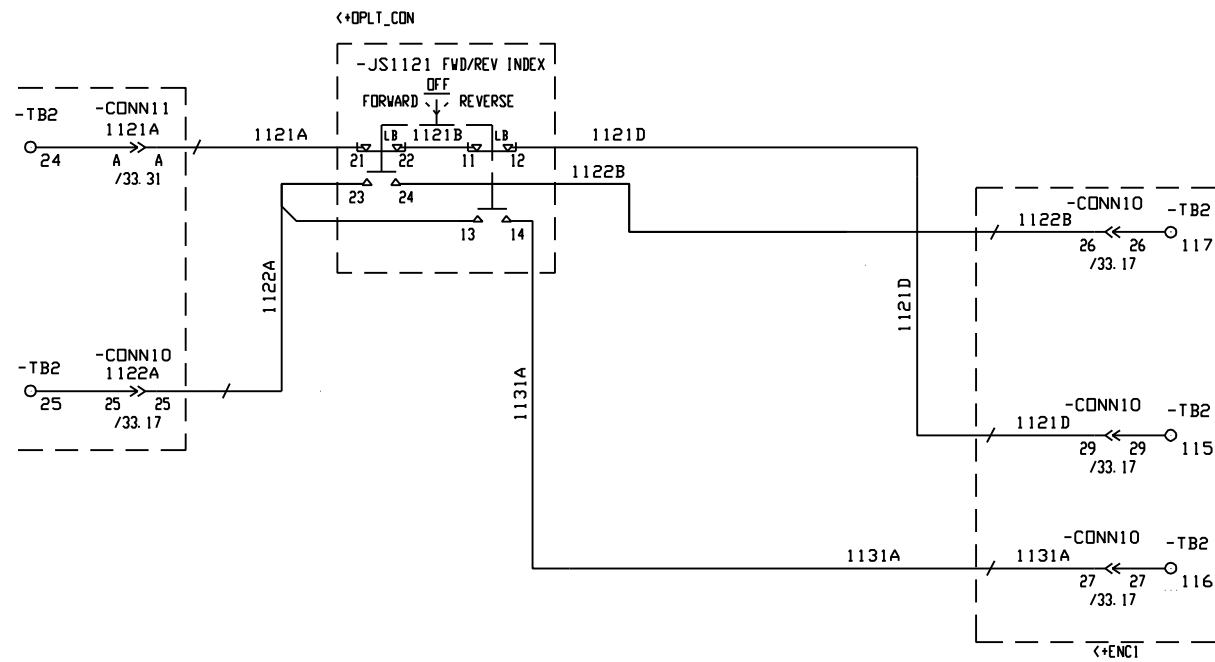
1. REMOVE OLD FOOTPEDAL AND CABLE
2. REMOVE WIRE 1122A FROM JS1121: 23,
LEAVE JUMPER BETWEEN JS1121: 23 AND JS1121: 13
3. REMOVE CABLE CLAMP FROM FOOT SWITCH AND INSTALL
REF #15 AND #16
4. FSW1121: 1 NOT USED
5. CONNECT RED WIRE FROM FSW1121: 2 TO JS1121: 12
AND LABEL AS 1121C
6. BUTT SPLICE WHITE WIRE FROM FSW1121: 3 TO
WIRE 1121D INSIDE OF CONTROL BOX
7. CONNECT BLACK WIRE FROM FSW1121: 4 TO JS1121: 24
AND LABEL AS 1122B
8. BUTT SPLICE GREEN WIRE FROM FSW1121: 5 TO
WIRE 1122A INSIDE OF CONTROL BOX
9. CONNECT ORANGE WIRE FROM FSW1121: 6 TO JS1121: 23
AND LABEL AS 1122F
10. PLACE THIS PAGE IN PARTS BOOK ELECTRICAL SCHEMATIC

INDEX FOOT PEDAL
CONVERSION P/N 2010248

INSERT IN FRONT OF PAGE 11 OF SCHEMATIC IN PARTS BOOK

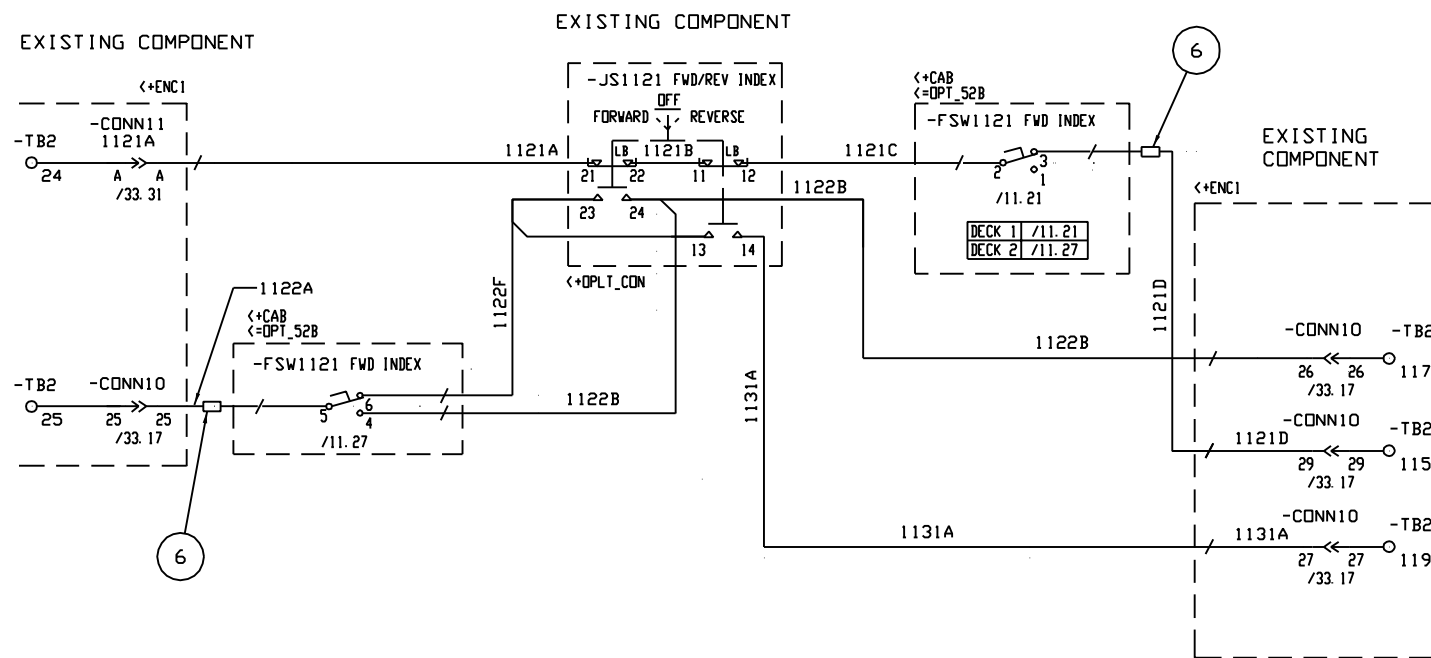
C10006092		12/04	CONFIDENTIAL © COPYRIGHT 2003 HARSCO TRACK TECHNOLOGIES. THIS DRAWING OR DOCUMENT IS THE PROPERTY OF HARSCO TRACK TECHNOLOGIES AND SHOULD BE KEPT CONFIDENTIAL. INFORMATION, TRADE SECRET, INFORMATION, AND/OR KNOW-HOW THAT IS THE PROPERTY OF HARSCO TRACK TECHNOLOGIES. BY ACCEPTING THIS DRAWING OR DOCUMENT, THE RECIPIENT AGREES (1) NOT TO PROVIDE, OR OTHERWISE MAKE AVAILABLE, THE DRAWING OR DOCUMENT, OR ANY INFORMATION OR KNOW-HOW EMBODIED THEREIN, TO ANY THIRD PARTY AND (2) NOT TO REPRODUCE OR USE THE DRAWING OR DOCUMENT TO MANUFACTURE ANY APPARATUS OR DEVICE, WITHOUT THE PRIOR WRITTEN AUTHORIZATION OF HARSCO TRACK TECHNOLOGIES.		UNLESS OTHERWISE SPECIFIED: DO NOT SCALE DRAWING. ALL ENGLISH TWO PLACE DECIMAL DIMENSIONS ± 0.1 ALL ENGLISH THREE PLACE DECIMAL DIMENSIONS ± 0.002 MACHINED SURFACES ± 0.010 MILLIMETERS ALL METRIC ONE PLACE DECIMAL DIMENSIONS ± 0.3 ALL METRIC TWO PLACE DECIMAL DIMENSIONS ± 0.05 MACHINED SURFACES ± 0.025 MILLIMETERS ALL ENGLISH TWO PLACE WELD DIMENSIONS ± 0.06 ALL ENGLISH THREE PLACE WELD DIMENSIONS ± 0.30 ALL METRIC ONE PLACE WELD DIMENSIONS ± 1.5 ALL METRIC TWO PLACE WELD DIMENSIONS ± 0.5 ALL ANGULAR DIMENSIONS ± 30' ALL ANGULAR WELD DIMENSIONS ± 1° BREAK ALL UNNECESSARY SHARP EDGES		DESCRIPTION CONVERSION SM INDEX/VKHD FOOT PEDAL	PART NUMBER 2010248, A	Harsco Track Technologies a harsco company LUDINGTON, MI
S10002819		10/04	MODEL 6700S	DATE 10/05/04	MATERIAL SEE SEPARATE B/M	DRAWING NUMBER 1008755, A	SHEET 3 OF 5		

BEFORE CONVERSION
CONTROL BOX, NO FOOTPEDAL INSTALLED



INSTRUCTIONS FOR INSTALLING INDEX FOOT PEDAL
TO CONTROL BOX THAT DID NOT HAVE ONE BEFORE

AFTER CONVERSION
SMALL FOOT PEDAL



WIRING INDEX FOOT PEDAL TO OPERATORS CONSOLE:

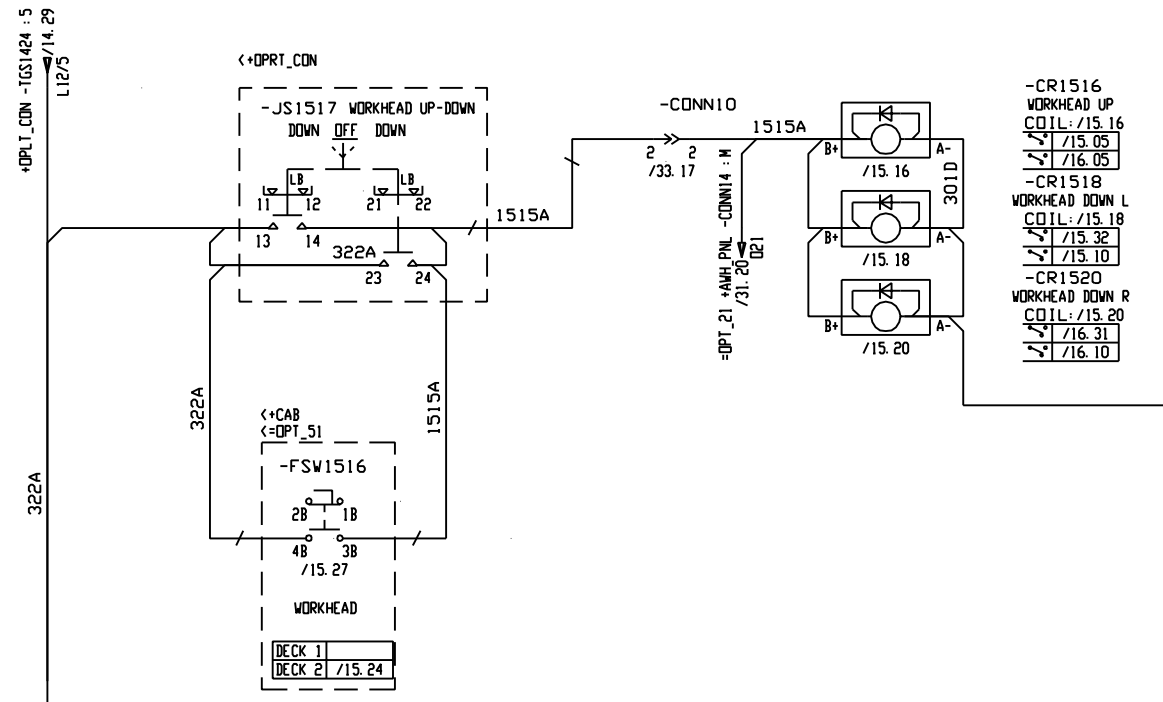
- FSW1121 FORWARD INDEX CONTROL
1. REMOVE WIRE 1121D FROM JS1121: 12
 2. REMOVE WIRE 1122A FROM JS1121: 23,
LEAVE JUMPER BETWEEN JS1121: 23 AND JS1121: 13
 3. REMOVE CABLE CLAMP FROM FOOT SWITCH AND INSTALL
REF #15 AND #16
 4. FSW1121: 1 NOT USED
 5. CONNECT RED WIRE FROM FSW1121: 2 TO JS1121: 12
AND LABEL AS 1121C
 6. BUTT SPLICE WHITE WIRE FROM FSW1121: 3 TO
WIRE 1121D INSIDE OF CONTROL BOX
 7. CONNECT BLACK WIRE FROM FSW1121: 4 TO JS1121: 24
AND LABEL AS 1122B
 8. BUTT SPLICE GREEN WIRE FROM FSW1121: 5 TO
WIRE 1122A INSIDE OF CONTROL BOX
 9. CONNECT ORANGE WIRE FROM FSW1121: 6 TO JS1121: 23
AND LABEL AS 1122F
 10. PLACE THIS PAGE IN PARTS BOOK ELECTRICAL SCHEMATIC

INDEX FOOT PEDAL
CONVERSION P/N 2010248

INSERT IN FRONT OF PAGE 11 OF SCHEMATIC IN PARTS BOOK

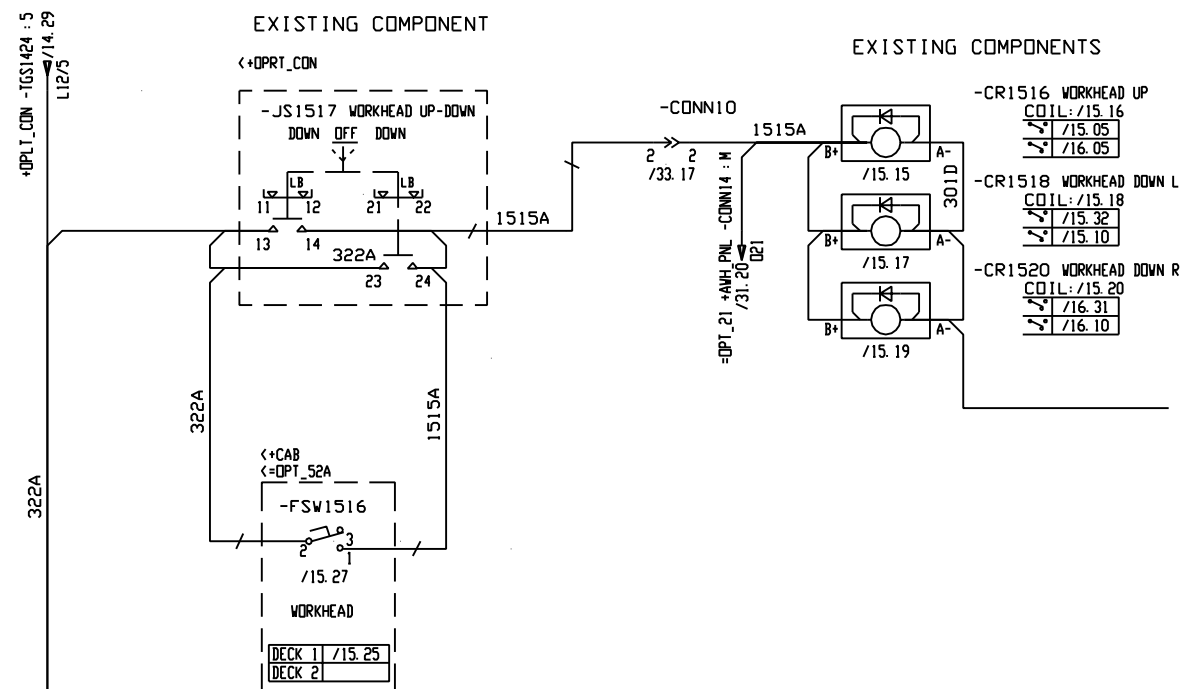
C10006092		12/04	CONFIDENTIAL © COPYRIGHT 2003 HARSOCO TRACK TECHNOLOGIES. THIS DRAWING OR DOCUMENT IS THE PROPERTY OF HARSOCO TRACK TECHNOLOGIES AND REMAINS CONFIDENTIAL INFORMATION. TRADE SECRET INFORMATION, AND/OR KNOW-HOW THAT IS THE PROPERTY OF HARSOCO TRACK TECHNOLOGIES. BY ACCEPTING THIS DRAWING OR DOCUMENT, THE RECIPIENT AGREES (1) NOT TO PROVIDE, OR OTHERWISE MAKE AVAILABLE, THE DRAWING OR DOCUMENT, OR ANY INFORMATION OR KNOW-HOW EMBODIED THEREIN, TO ANY THIRD PARTY AND (2) NOT TO REPRODUCE OR USE THE DRAWING OR DOCUMENT TO MANUFACTURE ANY APPARATUS OR DEVICE, WITHOUT THE PRIOR WRITTEN AUTHORIZATION OF HARSOCO TRACK TECHNOLOGIES.		UNLESS OTHERWISE SPECIFIED: DO NOT SCALE DRAWING. ALL ENGLISH TWO PLACE DECIMAL DIMENSIONS ± 0.01 ALL ENGLISH THREE PLACE DECIMAL DIMENSIONS ± 0.002 MACHINED SURFACES ± 0.004 INCHES ALL METRIC ONE PLACE DECIMAL DIMENSIONS ± 0.3 ALL METRIC TWO PLACE DECIMAL DIMENSIONS ± 0.05 MACHINED SURFACES ± 0.008 MILLIMETERS ALL ENGLISH THREE PLACE WELD DIMENSIONS ± 0.030 ALL METRIC ONE PLACE WELD DIMENSIONS ± 0.5 ALL METRIC TWO PLACE WELD DIMENSIONS ± 0.5 ALL ANGULAR DIMENSIONS ± 30" ALL ANGULAR WELD DIMENSIONS ± 1° BREAK ALL UNNECESSARY SHARP EDGES		DESCRIPTION CONVERSION SM INDEX/VKHD FOOT PEDAL	PART NUMBER 2010248, A	Harsco Track Technologies a harsco company LUDINGTON, MI	
S10002819		10/04			MODEL 6700S					
C1 OR S1 NUMBER		DATE MONTH/YEAR			DRAWN BDR	DATE 10/05/04	MATERIAL	DRAWING NUMBER 1008755, A	SHEET 4 OF 5	
					SCALE .25=1"	SEE SEPARATE B/M				

BEFORE CONVERSION
LARGE FOOT PEDAL



INSTRUCTIONS FOR INSTALLING SMALL WORKHEAD FOOT PEDAL

AFTER CONVERSION
SMALL FOOT PEDAL



WIRING WORKHEAD FOOT PEDAL TO OPERATORS CONSOLE:

- FWS1516 WORKHEAD CONTROL
IF YOUR MACHINE DOES NOT HAVE AN EXISTING FOOTPEDAL
GO TO STEP #2
1. REMOVE OLD FOOTPEDAL AND CABLE
 2. REMOVE CABLE CLAMP FROM FOOT SWITCH AND INSTALL REF #16 AND #17
 3. CONNECT BLACK WIRE FROM FWS1516: 1 TO JS1517: 24 AND LABEL AS 1515A
 4. CONNECT WHITE WIRE FROM FWS1516: 2 TO JS1517: 13 AND LABEL AS 322A
 5. FWS1121: 3 NOT USED
 6. PLACE THIS PAGE IN PARTS BOOK ELECTRICAL SCHEMATIC

CUT HERE

INDEX/WKHD FOOT PEDAL
CONVERSION P/N 2010248

INSERT IN FRONT OF PAGE 15 OF SCHEMATIC IN PARTS BOOK

C10006092		12/04	<p>CONFIDENTIAL</p> <p>© COPYRIGHT 2003 HARSICO TRACK TECHNOLOGIES. THIS DRAWING OR DOCUMENT IS THE PROPERTY OF HARSICO TRACK TECHNOLOGIES AND ENDS/RESIDES CONFIDENTIAL INFORMATION, TRADE SECRET INFORMATION, AND/OR KNOW-HOW THAT IS THE PROPERTY OF HARSICO TRACK TECHNOLOGIES. BY ACCEPTING THIS DRAWING OR DOCUMENT, THE RECIPIENT AGREES (1) NOT TO PROVIDE, OR OTHERWISE MAKE AVAILABLE, THE DRAWING OR DOCUMENT, OR ANY INFORMATION OR KNOW-HOW EMBODIED THEREIN, TO ANY THIRD PARTY AND (2) NOT TO REPRODUCE OR USE THE DRAWING OR DOCUMENT TO MANUFACTURE ANY APPARATUS OR DEVICE, WITHOUT THE PRIOR WRITTEN AUTHORIZATION OF HARSICO TRACK TECHNOLOGIES.</p>	<p>UNLESS OTHERWISE SPECIFIED:</p> <p>3D NOT SCALE DRAWING</p> <p>ALL ENGLISH TWO PLACE DECIMAL DIMENSIONS ± 0.1</p> <p>ALL ENGLISH THREE PLACE DECIMAL DIMENSIONS ± 0.002</p> <p>MACHINED SURFACES ± 0.010 INCHES</p> <p>ALL METRIC ONE PLACE DECIMAL DIMENSIONS ± 0.3</p> <p>ALL METRIC TWO PLACE DECIMAL DIMENSIONS ± 0.05</p> <p>MACHINED SURFACES ± 0.1 MICROMETERS</p> <p>ALL ENGLISH THREE PLACE WELD DIMENSIONS ± 0.030</p> <p>ALL METRIC ONE PLACE WELD DIMENSIONS ± 0.5</p> <p>ALL METRIC TWO PLACE WELD DIMENSIONS ± 0.2</p> <p>ALL ANGULAR DIMENSIONS ± 30'</p> <p>ALL ANGULAR WELD DIMENSIONS ± 15'</p> <p>BREAK ALL UNNECESSARY SHARP EDGES</p>	<p>DESCRIPTION</p> <p>CONVERSION</p> <p>SM INDEX/WKHD FOOT</p> <p>PEDAL</p>	<p>PART NUMBER</p> <p>2010248, A</p>	<p>Harsico Track Technologies</p> <p>a harsico company</p> <p>LUDINGTON, MI</p>
S10002819	10/04	<p>MODEL 6700S</p> <p>DRAWN BDR</p> <p>DATE 10/05/04</p> <p>SCALE .25=1"</p>			<p>MATERIAL</p> <p>SEE SEPARATE B/M</p>	<p>DRAWING NUMBER</p> <p>1008755, A</p> <p>SHEET 5 OF 5</p>	