



# Harsco Track Technologies

Harsco

www.harscotrack.com

---

## SERVICE BULLETIN MAINTENANCE OF WAY EQUIPMENT

---

**DATE:** 12-18-2001 **BULLETIN NO:** 01-018

**TITLE:** WORKHEAD POSITION CYLINDER ORIFICES SERVICE GROUP

**RATING:**

<input type="checkbox"/>	<b>DIRECTIVE</b> (Action Is Required)	<input type="checkbox"/>	<b>ALERT</b> (Potential Problem)
<input type="checkbox"/>	<b>INFORMATION</b> (Action Is Optional)	<input checked="" type="checkbox"/>	<b>PRODUCT IMPROVEMENT</b> (Enhance Product)

**PRODUCT SERIES / MODEL:** 6700S TAMPERS

**SERIAL NO:** All Models Serial # 152773 and Higher With All Workhead Position Cartridge Valves In One Manifold

**SUMMARY:** There are times when the workhead position cylinders cannot hold the extended position when the machine is working or traveling down the track. This condition exists when the cylinder is being extended and stopped in mid stroke. An orifice has been added in the rod end hose fitting to eliminate cavitation in the rod end of the cylinder.

**OPERATIONAL IMPACT:** Improves performance by eliminating cavitation, allowing the workhead position cylinders to maintain their position.

**ACTION:** The installation of this Service Group requires:

- Disconnecting the hydraulic lines from the workhead position cylinders rod end ports.
- Removing the existing adapter fittings from the cylinders rod end port.
- Installing the new orifice adapter fittings in the cylinders rod end port.
- Reconnecting the hydraulic lines to the new orifice adapter fittings.

**CONTACT:** If you have any questions or if we can be of any service, please contact Bill Perry or Doug Budreau at the Ludington, MI. facility, (231) 843-3431.

**SAFETY INFORMATION**

- **FOLLOW APPLICABLE RAILROAD LOCKOUT - TAGOUT PROCEDURE TO REMOVE ALL ENERGY SOURCES FROM MACHINE. FAILURE TO COMPLY COULD RESULT IN SEVERE BODILY INJURY.**

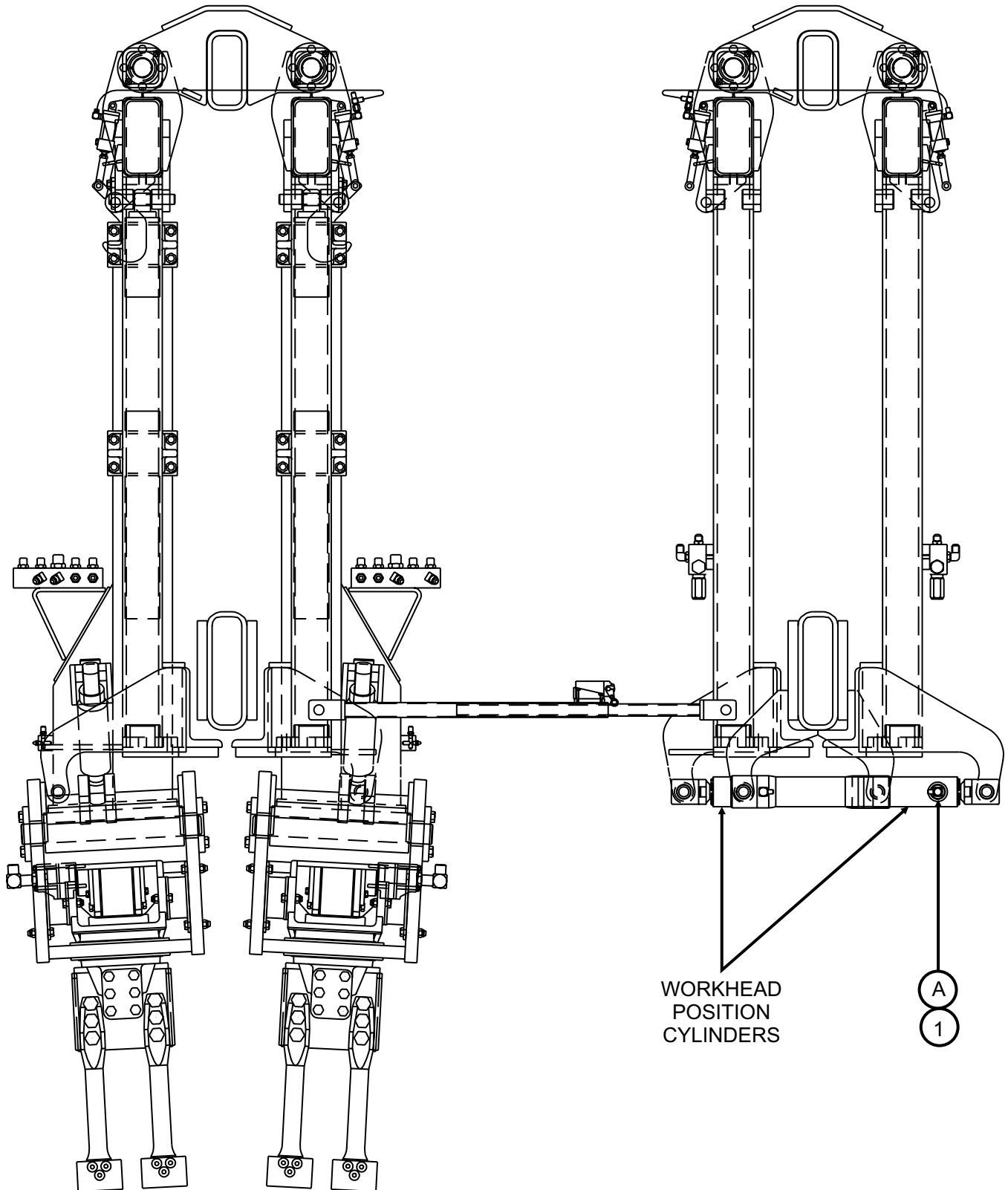
**SERVICE GROUP INSTALLATION - See Figure 1**

1. Disconnect the hydraulic line from the existing adapter fitting (A) in the rod end port of all four workhead position cylinders.
2. Remove the existing adapter fitting (A) from the rod end port of all four workhead position cylinders.
3. Install a new orifice adapter fitting (1) in the rod end port of all four workhead position cylinders and tighten securely.
4. Reconnect the hydraulic line to the new orifice adapter fitting (1) in the rod end port of all four workhead position cylinders and tighten securely.
5. Start the engine and pressurize the workhead position cylinders circuit.
6. Check the hydraulic lines and new orifice adapter fittings for hydraulic leaks.

SERVICE GROUP INSTALLATION

FIGURE 1  
WORKHEADS

1003819-1



**SERVICE GROUP PARTS LIST**

ITEM	PART NO	DESCRIPTION	QTY
1	2004543	Orifice Adapter Fitting . . . . .	4

**© 2001 HARSCO TRACK TECHNOLOGIES, HARSCO CORPORATION**

415 North Main Street  
Fairmont, MN  
56031-1837  
Tel: (507) 235-3361  
Fax: (507) 235-7370

2401 Edmund Road, Box 20  
Cayce-West Columbia, SC  
29171-0020  
Tel: (803) 822-9160  
Fax: (803) 822-7471

200 South Jackson Road  
Ludington, MI  
49431  
Tel: (231) 843-3431  
Fax: (231) 843-4830