



Harsco Track Technologies

Harsco

www.harscotrack.com

SERVICE BULLETIN MAINTENANCE OF WAY EQUIPMENT

DATE: 12-18-2001 **BULLETIN NO:** 01-021

TITLE: FUEL AND HYDRAULIC TANK SERVICE GROUP

RATING:

<input type="checkbox"/>	DIRECTIVE (Action Is Required)	<input checked="" type="checkbox"/>	ALERT (Potential Problem)
<input type="checkbox"/>	INFORMATION (Action Is Optional)	<input type="checkbox"/>	PRODUCT IMPROVEMENT (Enhance Product)

PRODUCT SERIES / MODEL: 6700S TAMPERS

SERIAL NO: All Models

SUMMARY: The fuel and hydraulic tanks on some machines have cracked on the sides at the radius of the tank bottom at the elevated portion of the tank. It has been determined that these failures are caused by a distortion in the tank due to uneven mounting pads. This Service Group reduces the tank mounting from four points to three points to eliminate the tank distortion for both the fuel and hydraulic tanks.

OPERATIONAL IMPACT: Eliminates fuel or hydraulic tank failure due to mounting distortion.

ACTION: The installation of this Service Group requires:

- Removing the existing mounting hardware from the four mounting points on both tanks.
- Installing spacer washers under only three mounting points of both tanks.
- Securing both tanks at only three mounting points using longer cap screws and original mounting hardware.

CONTACT: If you have any questions or if we can be of any service, please contact Bill Perry or Doug Budreau at the Ludington, MI. facility, (231) 843-3431.

SAFETY INFORMATION

- **FOLLOW APPLICABLE RAILROAD LOCKOUT - TAGOUT PROCEDURE TO REMOVE ALL ENERGY SOURCES FROM MACHINE. FAILURE TO COMPLY COULD RESULT IN SEVERE BODILY INJURY.**

SERVICE GROUP INSTALLATION - See Figure 1

1. Remove the existing mounting hardware from the four mounting points on both the fuel and hydraulic tanks. Two mounting points at the front of each tank and two mounting points at the rear of each tank.
2. Raise both the fuel and hydraulic tanks enough to install one new spacer washer (1) under both front mounting points (A) of each tank and under only the inside rear mounting point (A) of each tank.

Note: DO NOT INSTALL any spacer washers (1) under the outside rear mounting point of either tank.

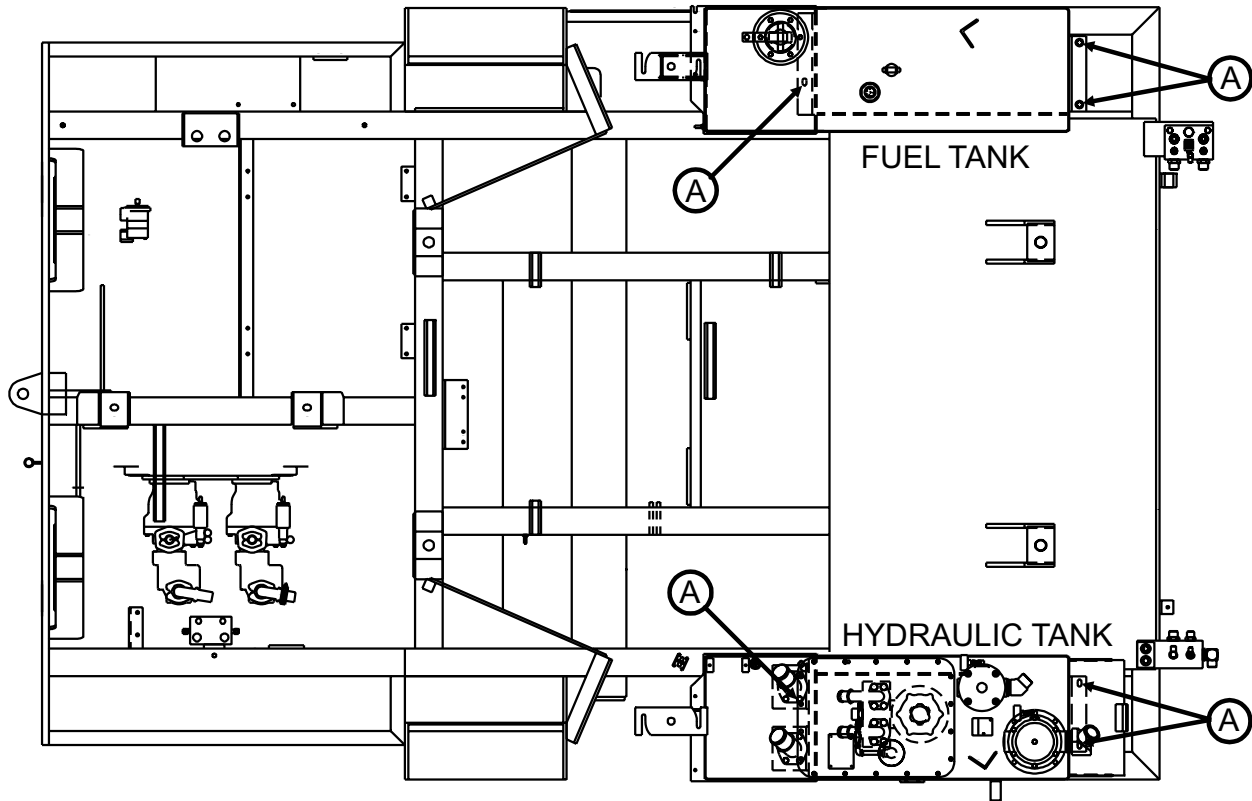
3. Secure both the fuel and hydraulic tanks mounting points using one new longer cap screw (2), two existing flat washers (B) and one existing lock nut (C) at both front mounting points (A) of each tank and at only the inside rear mounting point (A) of each tank. Tighten all mounting hardware securely.

Note: DO NOT INSTALL any mounting hardware in the outside rear mounting point of either tank.

SERVICE GROUP INSTALLATION

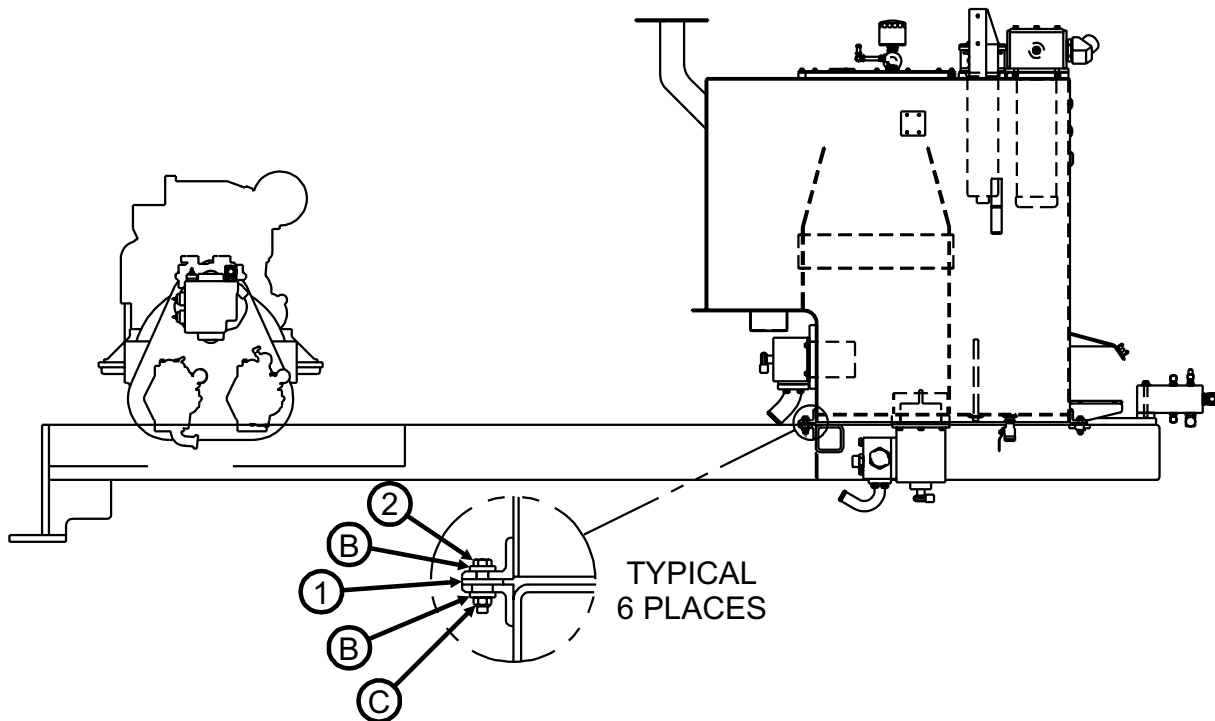
FIGURE 1
SERVICE GROUP INSTALLATION

1002568-2



REAR ←

→ FRONT



SERVICE GROUP PARTS LIST

ITEM	PART NO	DESCRIPTION	QTY
1	MT375	Spacer Washer.....	6
2	250010-224	Cap Screw	6

© 2001 HARSCO TRACK TECHNOLOGIES, HARSCO CORPORATION

415 North Main Street
Fairmont, MN
56031-1837
Tel: (507) 235-3361
Fax: (507) 235-7370

2401 Edmund Road, Box 20
Cayce-West Columbia, SC
29171-0020
Tel: (803) 822-9160
Fax: (803) 822-7471

200 South Jackson Road
Ludington, MI
49431
Tel: (231) 843-3431
Fax: (231) 843-4830