



Harsco Track Technologies

Harsco

www.harscotrack.com

SERVICE BULLETIN MAINTENANCE OF WAY EQUIPMENT

DATE: 2-28-2002 **BULLETIN NO:** 02-007

TITLE: 2004637 VIBRATOR ASSEMBLY AND STORAGE BOX CONVERSION GROUP

RATING:

<input type="checkbox"/>	DIRECTIVE (Action Is Required)	<input type="checkbox"/>	ALERT (Potential Problem)
<input type="checkbox"/>	INFORMATION (Action Is Optional)	<input checked="" type="checkbox"/>	PRODUCT IMPROVEMENT (Enhance Product)

PRODUCT SERIES / MODEL: 6700S Tamper

SERIAL NO: All Models

SUMMARY: A conversion group part # 2004637 has been developed to add a storage box and an extra vibrator to the front deck of the machine. The conversion group consists of a vibrator assembly, a metal storage box and the necessary mounting hardware to mount the box and hold the vibrator in position inside of the box. The suggested location of the storage box is at the front of the machine frame to provide easy access to lift the vibrator assembly from the storage box using a light crane or hoist, such as would be mounted on a maintenance truck.

OPERATIONAL IMPACT: This conversion group provides a storage box and an extra vibrator assembly for on the machine.

ACTION: The installation of this Service Group requires:

- Welding the vibrator mounting plate inside of the storage box.
- Welding the storage box on the machine frame.
- Installing the vibrator assembly inside of the storage box.

CONTACT: If you have any questions or if we can be of any service, please contact Bill Perry or Doug Budreau at the Ludington, MI. facility, (231) 843-3431.

SAFETY INFORMATION

- **FOLLOW APPLICABLE RAILROAD LOCKOUT - TAGOUT PROCEDURE TO REMOVE ALL ENERGY SOURCES FROM MACHINE. FAILURE TO COMPLY COULD RESULT IN SEVERE BODILY INJURY.**

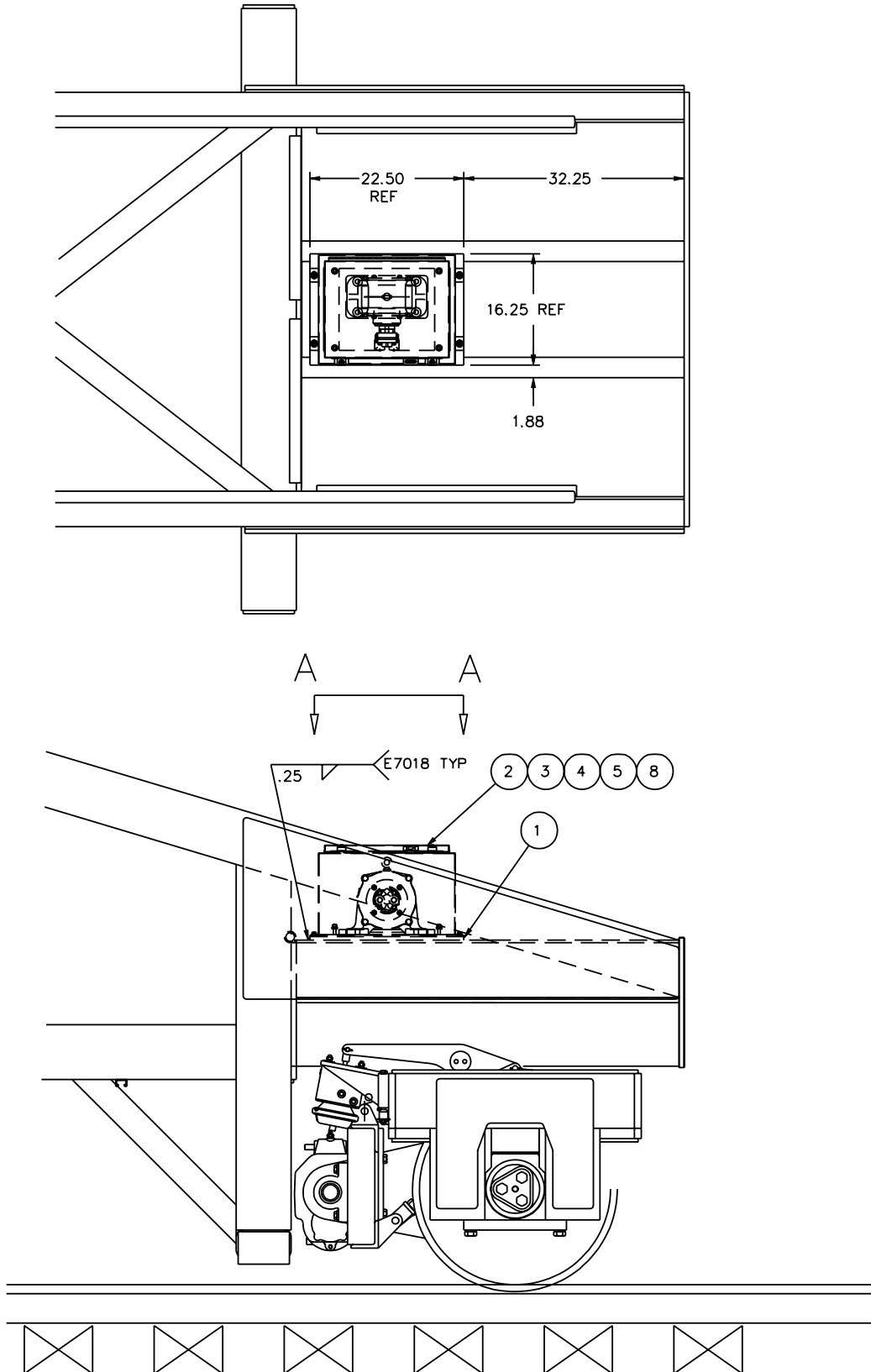
CONVERSION GROUP INSTALLATION - See Figure 1 and Figure 2

1. **Important:** Before welding on the machine:
 - 1.1 Shut off the battery disconnect switch.
 - 1.2 Disconnect all electrical wires from the alternator.
 - 1.3 If the machine has the Auto Curve Computer, disconnect cable #15.
 - 1.4 If the machine has the Auto Workhead Computer, disconnect cable #14.
 - 1.5 Disconnect cables #12 and #13 going to the module panels.
2. The suggested location of the storage box is at the front of the machine frame to provide easy access to lift the vibrator assembly from the storage box using a light crane or hoist, such as would be mounted on a maintenance truck.
3. Install the storage box (2) to the mounting pad (1) using four 3/8" cap screws (3), lock washers (4) and flat washers (5).
4. See Figure 2. Weld the foot plate (6) inside of the storage box (2) per the dimensions and weld symbols as shown.
5. See Figure 1. Weld the storage box assembly to the front of the machine per the dimensions and weld symbols as shown.
6. Install the vibrator assembly (7) inside of the storage box and secure the lid with the padlock (8).
7. Reconnect all wires and cables that were disconnected in Step 1.

CONVERSION GROUP INSTALLATION

1004154-1

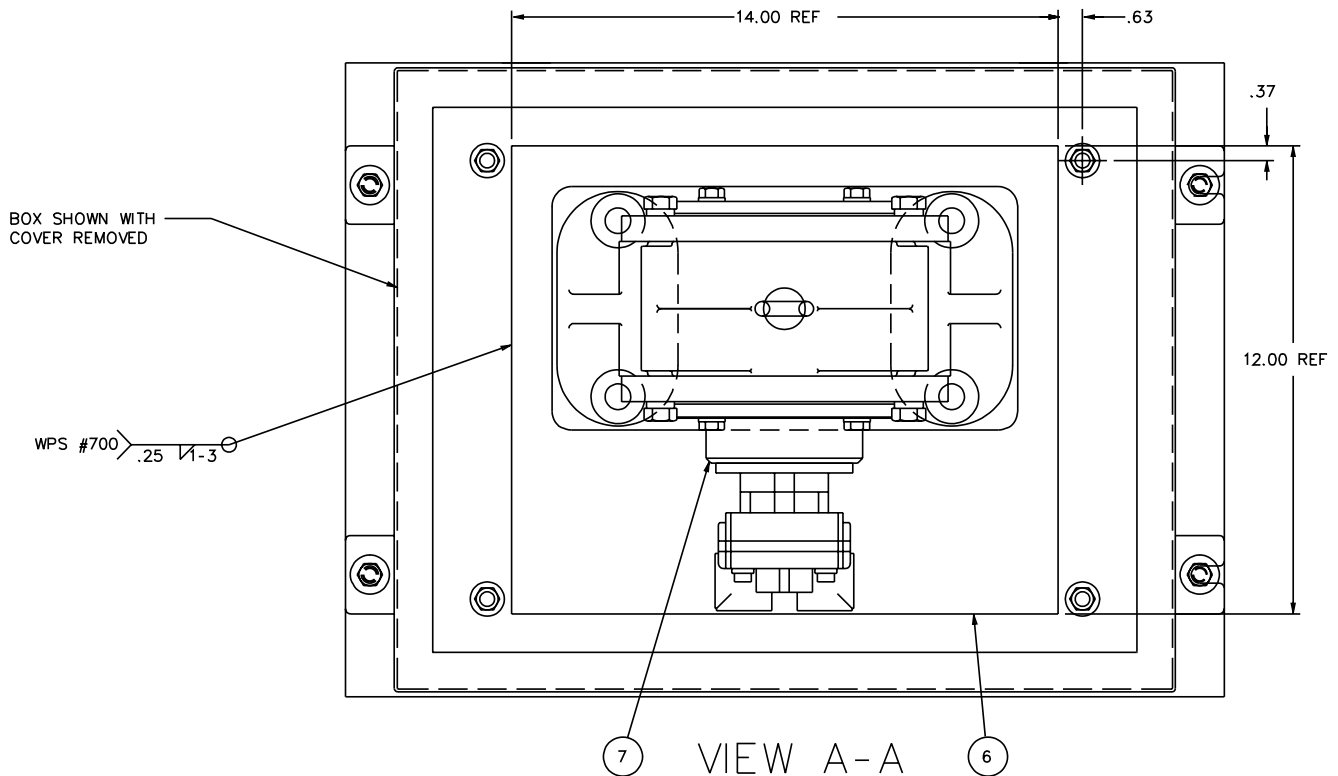
FIGURE 1
CONVERSION GROUP INSTALLATION



CONVERSION GROUP INSTALLATION

1004637-2

**FIGURE 2
VIEW A-A INSIDE OF STORAGE BOX**



CONVERSION GROUP PARTS LIST

ITEM	PART NO	DESCRIPTION	QTY
	2004637	VIBRATOR ASSEMBLY AND STORAGE BOX	1
1	91066-055	Plate, 1/2" x 6" x 10"	1
2	450670-1	Enclosure	1
3	250010-103	Cap Screw, 3/8"-16 x 3/4" Hex Head	4
4	150988-11	Washer, Lock 3/8"	4
5	150973-4	Washer, Plain 3/8"	4
6	91068-035	Mounting Foot	1
7	430484-1	Vibrator Assembly	1
8	2030	Padlock	1

© 2002 HARSCO TRACK TECHNOLOGIES, HARSCO CORPORATION

415 North Main Street
Fairmont, MN
56031-1837
Tel: (507) 235-3361
Fax: (507) 235-7370

2401 Edmund Road, Box 20
Cayce-West Columbia, SC
29171-0020
Tel: (803) 822-9160
Fax: (803) 822-7471

200 South Jackson Road
Ludington, MI
49431
Tel: (231) 843-3431
Fax: (231) 843-4830