

# DRONE ANCHOR SQUEEZER

MODEL DSQ



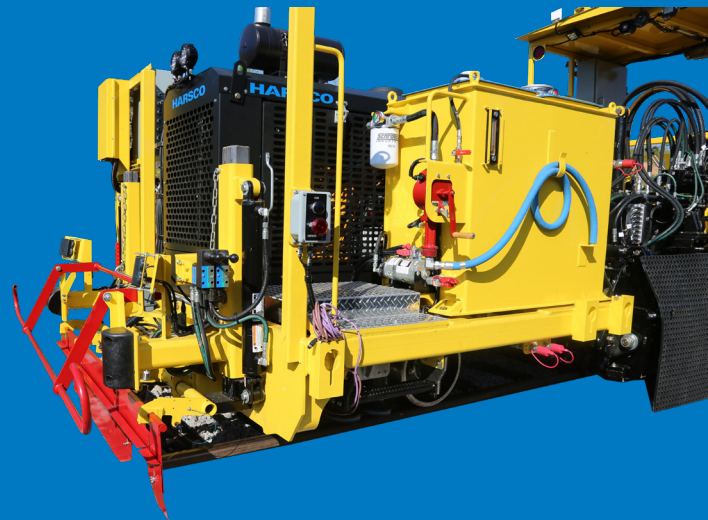


## **DRONE ANCHOR SQUEEZER**

### MODEL DSQA1

Harsco Rail's new Drone Anchor Squeezer (DSQ) integrates the latest technology into a highly productive machine. The DSQ is part of our line of Drone track maintenance machines.

The Drone Anchor Squeezer is one of the family of new machines designed to bring automation, high production, commonality and overall cost savings to your track maintenance projects.



# SPECIAL FEATURES

The continuous action Drone Anchor Squeezer is designed to work autonomously with very little human input required once the machine is set up to go to work each day.

Anchor recognition and tie mapping systems all use breakthrough technology to help automate the machine, as well as reduce the number of machines and operators needed in most operations.

Equipped with robust and redundant safety features, Harsco Rail drone machines are field-proven to achieve high production while protecting people and equipment.

# FEATURES

## Comfortable Travel Cab

Climate controlled cab with seating for 1 driver and 2 riders provides safe, comfortable accommodation when travelling to/from the work site.

## Continuous Action

Allows the machine to perform at a high production rate while squeezing at every tie with rail anchors.

## Jupiter Control System

Harsco Rail's rugged and scalable distributed I/O control system provides comprehensive diagnostics, data recording and a simplified electrical system.

## Common parts

Designed with components used on other Harsco track maintenance machines. Reduces the number of different parts required on hand.

## OTM Storage

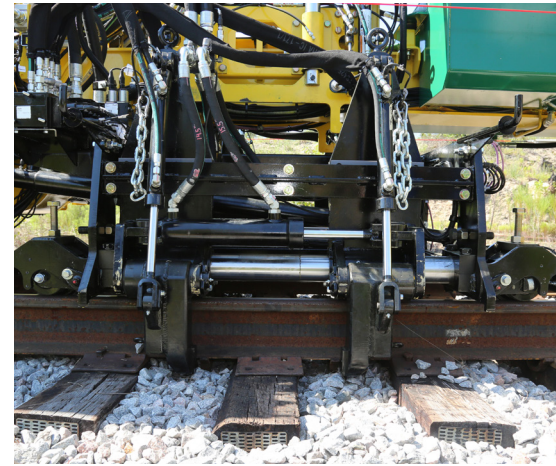
Storage bin located at the rear of the machine can hold track materials such as spikes and anchors provides easy access for quality control work behind the machine.

## Drone operation

Using the Tie Finder and Anchor Recognition systems the machine is able to identify the next tie to be worked and automatically initiate the work cycle at that location. No operator interface required during normal production operations.

## Redundant Safety Systems

Equipped with radar, emergency stop bar (option) and obstacle detection systems to safely alert the machine if something is fouling the track ahead.



## Hydraulic Brakes

Spring applied – hydraulic released brakes eliminate the need for a pneumatic system.

## Tier IV Compliant diesel engine

Other engine options are available.

## Drive

Two-axle chain drive. Equipped with 3 1/2" axles for rugged dependability. Pivoting rear axle.

## Easy access maintenance points

Open design and remote lubrication reduces maintenance time.

# OPTIONAL FEATURES

## Quality Control Cart w/Lift System

This self-propelled cart makes quality control work easier. Forward/reverse capabilities with caliper brake. Generator to supply electrical power to the components. It can carry the tools and materials necessary. With the powered lift system fitted to the back of the DSQ, it is easily transported to/from the work site. The cart can be equipped with features like umbrellas, fans, horn and lights.

## Compass

Harsco Rail's telematics system monitors the machine's production, location and key data such as engine and hydraulic oil temperature and maintenance reports.

## Hydraulic Filtration

Kidney loop, return filters, etc.

## Remote Drains

Fuel, hydraulic oil, diesel fuel and engine oil remote drains

## Collision Avoidance System

As part of a complete track safety program, Harsco's Collision Avoidance System will alert operators if the machine gets too close to the machines working around it.

## Powered Jack Stands

Powered jack stands at the four corners of the machine provide a safe method to lift the machine if maintenance is required.

## Tool and Storage Box

Open tray or closed tool box mounted at the front of machine. Also available is the spare parts storage box located under the cab.

## Fire Extinguisher/Cone Holder

Available per customer specs

## Tie Downs

Keyhole tie downs welded to machine in accordance to AREMA or customer specifications.

# DRONE ANCHOR SQUEEZER

## MODEL DSQ



## SPECIFICATIONS

Length	364 in.
Width	108 in. (102 in. for shipping)
Height	125 in. (120 in. for shipping)
Wheelbase	198 in.
Weight	24,300 lbs. (approximate)
Max Travel Speed	Up to 25 mph
Fuel Capacity	100 gal. (sufficient for up to 16 hours)
Wheels	16 in. diameter
Brakes	Spring applied, hydraulically released, tread style Cobra shoes, on both axles
Electrical System	24 VDC
Pneumatic System	None used
Workheads	Independent workheads allow the machine to work on slewed ties.

Learn more at [harscorail.com](http://harscorail.com)



Updated in USA, August 2019

**Harsco Rail, Harsco Corporation**  
Facility Locations:

**Harsco Rail Global Headquarters**  
3440 Toringdon Way  
Suite 100, Building 3  
Charlotte, NC 28277, USA  
+1 980 960-2624  
[railinfo@harsco.com](mailto:railinfo@harsco.com)

**Harsco Rail Manufacturing Operations**  
2401 Edmund Road, Box 20  
West Columbia, SC 29171-0020, USA  
+1 803 822-9160  
[railinfo@harsco.com](mailto:railinfo@harsco.com)

**Harsco Rail Engineering Center**  
306 West 4th Street  
Fairmont, MN 56031-1837, USA  
+1 507 235-7376  
[railinfo@harsco.com](mailto:railinfo@harsco.com)

**Harsco Rail Manufacturing Operations**  
200 South Jackson Road  
Ludington, MI 49431, USA  
+1 231 843-3431  
[railinfo@harsco.com](mailto:railinfo@harsco.com)

**Protran Technology**  
1960 Old Cuthbert Road, Suite 100  
Cherry Hill, NJ 08034, USA  
+1 856 779-7795  
[info@protrantechology.com](mailto:info@protrantechology.com)

**Harsco Rail Pty Ltd Australia**  
4 Strathwyn Street, P.O. Box 5287  
Brendale, Queensland 4500, Australia  
+61 7 3205 6500

**Harsco Rail Ltd United Kingdom**  
Unit 1, Chewton Street, Eastwood  
Nottingham NG16 3HB, United Kingdom  
+44 (0) 1773 539480  
[uksales@harsco.com](mailto:uksales@harsco.com)

**Harsco Rail Ltda Brazil**  
Av. Marechal Câmara, 160 / 1615, Centro  
Rio de Janeiro RJ 20020-080, Brazil  
+55 21 2510-5164 / -5151

**Harsco Rail Europe GmbH**  
Luetticher Str. 130  
40547 Duesseldorf, Germany  
+49 (0) 211 60116 0  
[info.emea@harsco.com](mailto:info.emea@harsco.com)

**Harsco Rail China**  
Room C1201 Tower 2,  
No.36 BeiSanHuan Dong Lu,  
DongCheng District,  
Beijing 100013, P.R. China  
+87 10-6590-6399

**Harsco Track Machines and Services**  
Private Limited India  
2nd Floor, Building Alpha,  
Bengal Intelligent Park Block EP & GP,  
Sector V, Salt Lake, Kolkata  
700091 West Bengal, India  
+91 33 2357 5651

The HARSCO RAIL equipment pictured in this brochure is intended to illustrate the general appearance and features of this product. It is equipped as specified by a particular customer and may or may not show items that are optional or recommended by HARSCO RAIL, Harsco Corporation. Specifications, illustrations, and descriptive materials herein were accurate as known at the time this publication was approved for printing. HARSCO RAIL, Harsco Corporation reserves the right to discontinue models or options at any time or change specifications and materials, equipment and design without notice and without incurring obligation. Federal, State or Provincial, and/or local laws and regulations may require additional equipment for the particular use intended for this product. It is the buyer's responsibility to determine the applicability of such laws and regulations to the buyer's intended use for the product and to arrange for the installation of the required equipment. Other products and companies referred to herein are trademarks or registered trademarks of their respective companies and/or mark holders.