



Harsco Track Technologies

Harsco

www.harscotrack.com

SERVICE BULLETIN MAINTENANCE OF WAY EQUIPMENT

DATE: 7-9-2002 **BULLETIN NO:** 02-018

TITLE: 198828 REAR SPRING CELL DISC SPRING SERVICE GROUP

RATING:

<input type="checkbox"/>	DIRECTIVE (Action Is Required)	<input type="checkbox"/>	ALERT (Potential Problem)
<input type="checkbox"/>	INFORMATION (Action Is Optional)	<input checked="" type="checkbox"/>	PRODUCT IMPROVEMENT (Enhance Product)

PRODUCT SERIES / MODEL: All Vehicles Equipped With HR2000 Series B2 Rear HY-RAIL® Guide Wheel Equipment

SERIAL NO: All Rear HR2000 Models B2

SUMMARY: The existing disc springs in the spring cell are being replaced by new disc springs to help prevent corrosion.

OPERATIONAL IMPACT: To extend the operational life of the disc springs in the spring cell.

ACTION: Order one Service Group part # 198828 to replace the disc springs in only one spring cell of the rear guide wheel unit. Order two Service Groups part # 198828 to replace the disc springs in both spring cells of the rear guide wheel unit.

The installation of this Service Group requires:

- Removing the spring cell from the rear unit.
- Removing the existing disc springs from the spring cell.
- Inspecting the spring cell and cylinder rod for damage, wear, etc.
- Installing the new disc springs in the spring cell.
- Re-installing the spring cell on the rear unit.

CONTACT: To order the Rear Spring Cell Disc Spring Service Group, please contact the HY-RAIL® Parts Department at the Fairmont, MN. facility, (507) 235-7143.

SAFETY INFORMATION

- **FOLLOW APPLICABLE RAILROAD LOCKOUT - TAGOUT PROCEDURE TO REMOVE ALL ENERGY SOURCES FROM VEHICLE AND RAIL GUIDE WHEEL EQUIPMENT. FAILURE TO COMPLY COULD RESULT IN SEVERE BODILY INJURY.**

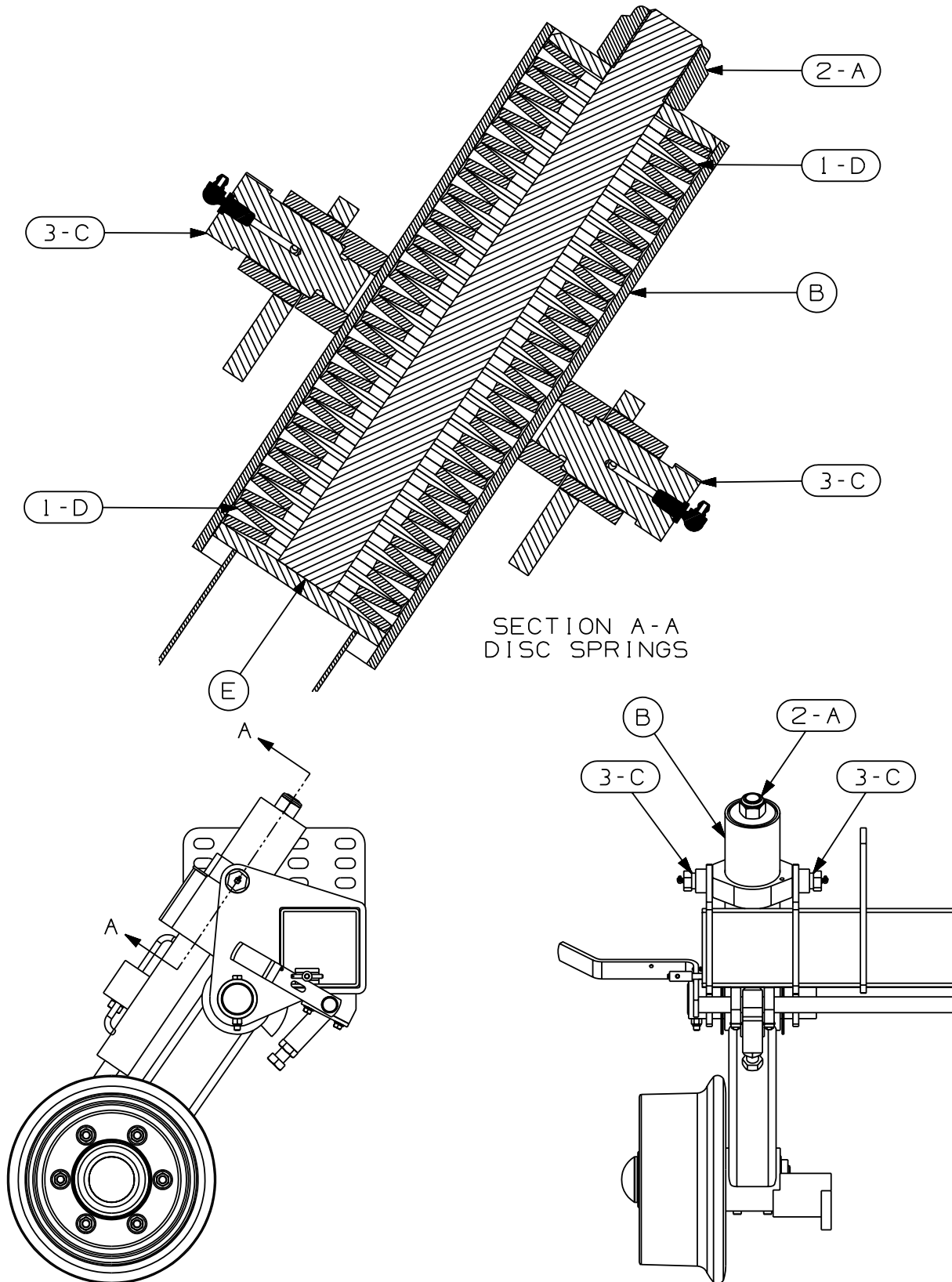
SERVICE GROUP INSTALLATION - See Figure 1

1. Leave the rear guide wheel unit raised and locked in the HIGHWAY position.
2. **MAKE SURE** there is no tension on the disc springs. Slowly remove the 1" hex lock nut (A) from the top of the spring cell (B). Discard the hex lock nut (A); it will not be re-used.
3. Remove the two trunnions (C) that hold the spring cell (B) to the rear guide wheel unit.
4. Remove the spring cell (B) to expose the 35 disc springs (D) on the cylinder rod (E).
5. Remove the 35 disc springs (D) from the cylinder rod (E). Discard the 35 disc springs (D); they will not be re-used.
6. Inspect the spring cell (D) and cylinder rod (E). Replace any components that are worn, damaged, etc.
7. Install the 35 new disc springs (1) over the cylinder rod (E). Be sure to alternate the disc springs (1) as shown in Section A-A as they are stacked on the cylinder rod (E).
8. Re-install the spring cell (B) over the cylinder rod (E).
9. Clean the two trunnions (C) and apply the supplied Loctite #271 (3). Be sure to follow the manufacturer's installation instructions.
10. Re-install the two trunnions (C) to secure the spring cell (B) to the rear guide wheel unit. Torque the two trunnions (C) to 140 ft-lbs.
11. Install the new 1" hex lock nut (2) to the cylinder rod (E) on the top of the spring cell (B). Tighten the hex lock nut (2) until all slack is removed from the disc springs (1).
12. If the disc springs in the spring cell on the other side of the rear guide wheel unit are to be replaced, repeat Steps 2 - 11.
13. Unlock and cycle the rear guide wheel unit several times between the HIGHWAY and RAIL positions to ensure proper operation.

SERVICE GROUP INSTALLATION

SE02A148A-1

FIGURE 1
SERVICE GROUP INSTALLATION



SERVICE GROUP PARTS LIST - See Figure 1

ITEM	PART NO	DESCRIPTION	QTY
	198828	REAR SPRING CELL DISC SPRING SERVICE GROUP . .	1
1	196431	Disc Spring	35
2	F012232K	Hex Lock Nut, 1"-14	1
3	F023458	Loctite #271, 0.5 oz Tube	1

© 2002 HARSCO TRACK TECHNOLOGIES, HARSCO CORPORATION

415 North Main Street
Fairmont, MN
56031-1837
Tel: (507) 235-3361
Fax: (507) 235-7370

2401 Edmund Road, Box 20
Cayce-West Columbia, SC
29171-0020
Tel: (803) 822-9160
Fax: (803) 822-7471

200 South Jackson Road
Ludington, MI
49431
Tel: (231) 843-3431
Fax: (231) 843-4830