



Harsco Track Technologies

Harsco

www.harscotrack.com

SERVICE BULLETIN

MAINTENANCE OF WAY EQUIPMENT

DATE: 10 - 2003

BULLETIN NO: 03-022

TITLE: Vehicle Frame Inspection

RATING:



ALERT
(Potential Problem)



INFORMATION
(Action Is Optional)



DIRECTIVE
(Action Is Required)



PRODUCT IMPROVEMENT
(Enhance Product)

PRODUCT SERIES / MODEL: All 1996 - 1999 Chevrolet 2500HD vehicles equipped with Series 0307, HR0307 Series A or HR0307 Series B HY-RAIL® Guide Wheel Equipment.

SERIAL NO: Not Applicable

SUMMARY: Several reports have been received of cracks developing on the front of the frame, near the radiator mounts, on 1996 - 1999 Chevrolet 2500HD vehicles equipped with Series 0307, HR0307 Series A or HR0307 Series B HY-RAIL® Guide Wheel Equipment.

OPERATIONAL IMPACT: To identify and prevent the possibilities of cracks developing or continuing to develop on the vehicle frame.

ACTION: Use this information to inspect the vehicle frame for cracks and determine corrective action.

CONTACT: If you have any questions or if we can be of any service, please contact the HY-RAIL® Guide Wheel Equipment Department at the Fairmont, MN facility (507) 235-7112.

Safety Information



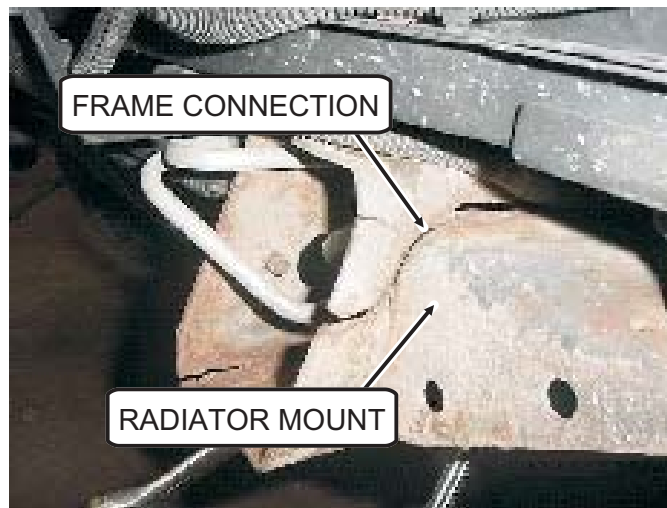
■ FOLLOW APPLICABLE RAILROAD LOCKOUT - TAGOUT PROCEDURE TO DISABLE ENERGY SOURCES WHEN PERFORMING MAINTENANCE, MAKING ADJUSTMENTS OR REPAIRS TO THE VEHICLE OR EQUIPMENT. FAILURE TO HEED THIS WARNING COULD RESULT IN SEVERE BODILY INJURY.

Frame Inspection And Corrective Action

See Figures 1, 2 and 3

1. When the rail guide wheel unit is still mounted on the vehicle, use a flashlight to inspect the front end of the tubular frame and the radiator support mount to frame connection area.
2. Closely inspect for cracks in all corners, edges, holes, and all welded areas.
3. Examine all bolted joints where the rail guide wheel unit mounting brackets are attached to the vehicle frame.
4. If no cracks or indications of developing cracks are present continue with normal operation. At the next service have the diagonal cross braces modified per HTT Service Bulletin 03-023. The two new diagonal cross braces will improve the structural support of the guide wheel unit mounting brackets.
5. If cracks are evident, immediately take the vehicle out of service. Take the vehicle to a repair shop and have the cracks in the frame repaired and the diagonal cross braces installed. Follow the instructions in the HTT Service Bulletin 03-023.

FIGURE 1



Frame Inspection And Corrective Action

FIGURE 2

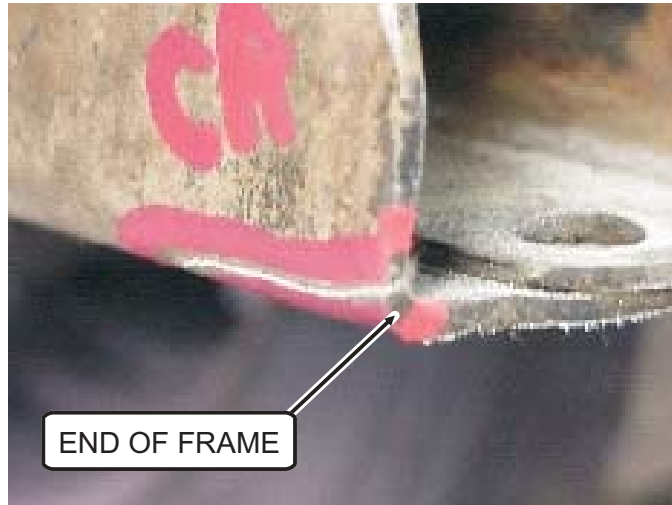
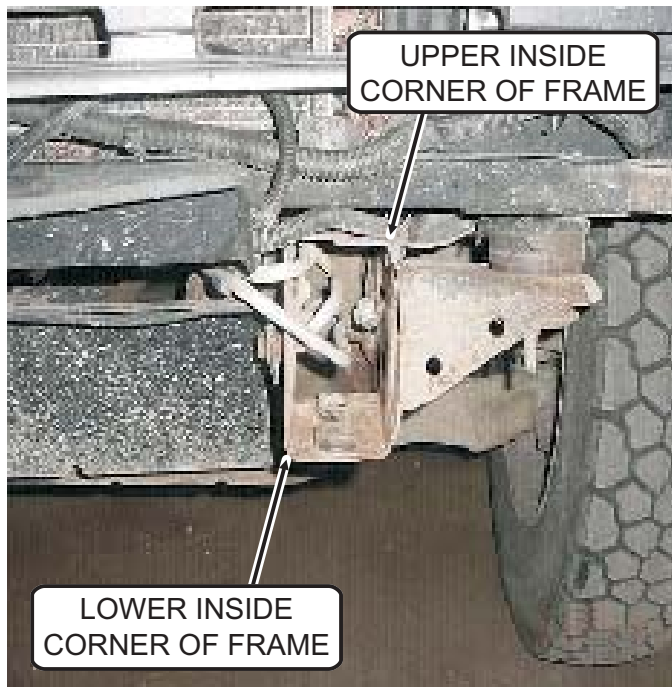


FIGURE 3



© 2003 HARSCO TRACK TECHNOLOGIES, HARSCO CORPORATION

415 North Main Street
Fairmont, MN
56031-1837
Tel: (507) 235-3361
Fax: (507) 235-7370

2401 Edmund Road, Box 20
Cayce-West Columbia, SC
29171-0020
Tel: (803) 822-9160
Fax: (803) 822-7471

200 South Jackson Road
Ludington, MI
49431
Tel: (231) 843-3431
Fax: (231) 843-4830

Printed In U.S.A.