



Harsco Track Technologies

Harsco

www.harscotrack.com

SERVICE BULLETIN

MAINTENANCE OF WAY EQUIPMENT

DATE: 3 - 2008

BULLETIN NO: 07-011A

TITLE: Mounting Inspection and Repair Instructions

RATING:

ALERT
(Potential Problem)

INFORMATION
(Action Is Optional)

DIRECTIVE
(Action Is Required)

PRODUCT IMPROVEMENT
(Enhance Product)

PRODUCT SERIES / MODEL: HR1900 Series A HY-RAIL® Guide Wheel Units.

SERIAL NO: N/A

SUMMARY: It has come to the attention of Harsco Track Technologies that wear is occurring in the slotted arms that are part of the upper structure. The wear is in the area where the slotted arm is connected to the rear mounting brackets with a bolt and spacer tube. The wear is being caused by the natural action of the vehicle suspension. This area of the guide wheel unit must be visually inspected and if any wear is observed, the wear area must be repaired and new components installed to help reduce future wear.

OPERATIONAL IMPACT: Operating the vehicle on rail or on the road with excessive wear in the slotted arms may result in the guide wheel unit separating at the slotted arm / rear mounting bracket joint. A failure at this joint could result in damage to the guide wheel unit, vehicle and if on rail, possible derailment of the vehicle.

ACTION: Visually inspect the slotted arms, bolt and spacer tube per the instructions in this service bulletin. If any wear is observed, the vehicle must be removed from service and taken to an approved HY-RAIL® guide wheel unit repair facility. The facility must repair and replace components per the instructions in this service bulletin before the vehicle can be returned to service.

CONTACT: If you have any questions or if we can be of any service, please contact the Fairmont, MN facility, HY-RAIL® Guide Wheel Equipment Service Department at (507) 235-7212 or to order parts, contact the Parts Department at (507) 235-7143 or (507) 235-7191.

Safety Information



- FOLLOW APPLICABLE RAILROAD LOCKOUT - TAGOUT PROCEDURE TO DISABLE ENERGY SOURCES WHEN PERFORMING MAINTENANCE, MAKING ADJUSTMENTS OR REPAIRS TO THE VEHICLE OR EQUIPMENT. FAILURE TO HEED THIS WARNING COULD RESULT IN SEVERE BODILY INJURY.

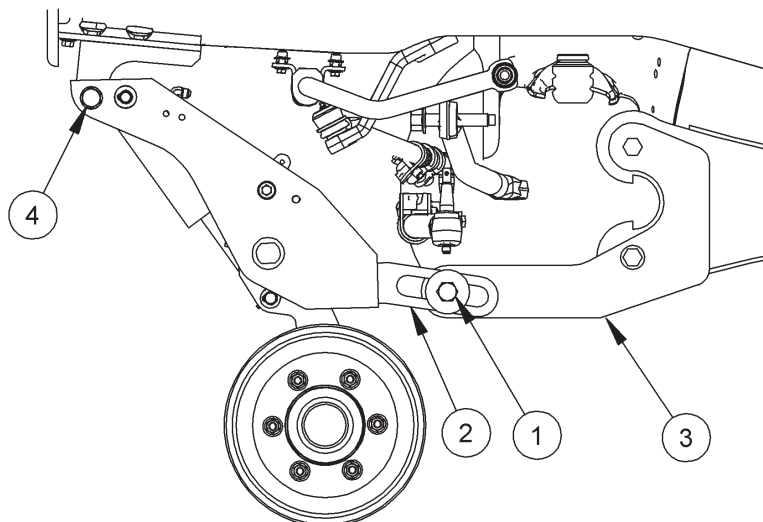
Inspecting Guide Wheel Unit

1. Visually inspect the slotted arms, tube spacer and bolt for any wear or damage. If any wear or damage is observed, existing components (slotted arms) must be repaired and new components installed.
2. The repairs to the guide wheel unit must be performed by an approved HY-RAIL® guide wheel unit repair facility. It is recommended that the guide wheel unit be removed from the vehicle for proper repair and component replacement.

Removing Guide Wheel Unit From Vehicle - See Figure 1

1. Lower the guide wheels and let them rest on the shop floor. Disconnect and cap the hydraulic hoses from the hydraulic cylinders. Cap the fittings on the hydraulic cylinders.
2. Remove existing nuts, bolts, washers and tube spacers (1) from the slotted arm (2) and rear mounting bracket (3). Discard the nuts, bolts, washers and spacer tube as they will not be reused.
3. Remove existing nuts, bolts and washers (4) and discard. Remove the guide wheel unit from under the vehicle.
4. Remove the rear mounting brackets (3). Discard the mounting brackets and fasteners.

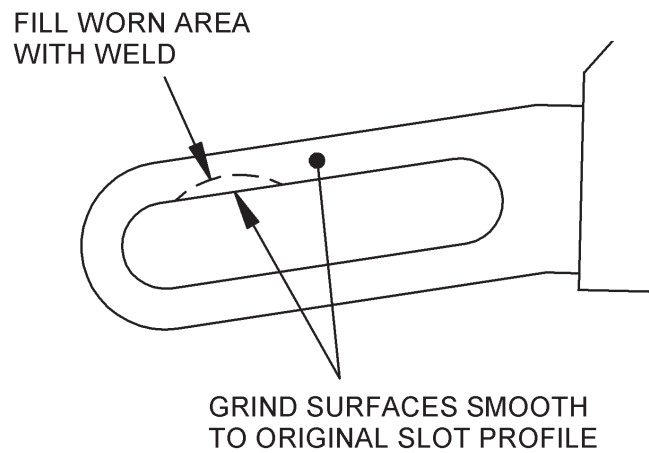
FIGURE 1
REMOVING GUIDE WHEEL UNIT



Repairing And Reinforcing Worn Slotted Arms

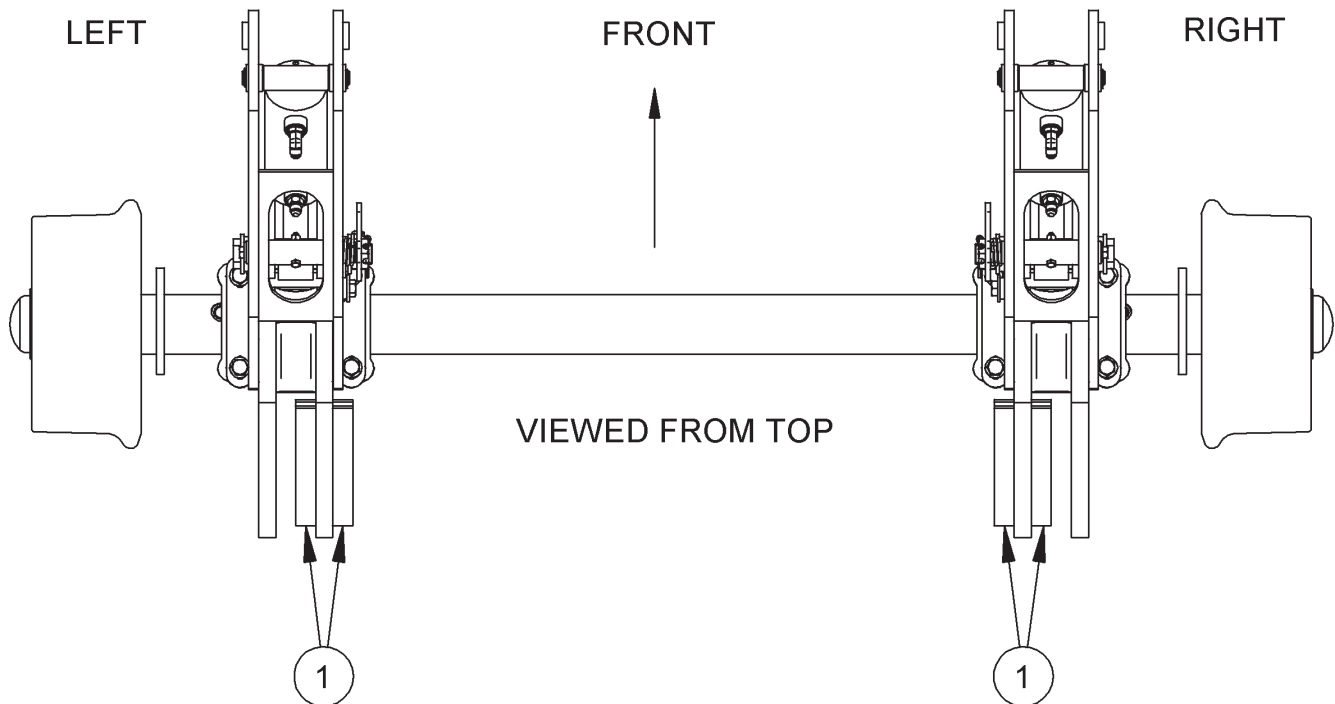
1. See Figure 2. The slotted arms must be repaired by filling all worn areas with weld. After welding, the area must be ground smooth to match the original profile of the slot.

FIGURE 2
REPAIRING SLOTTED ARMS



2. See Figure 3. Locate bars (1), HTT Part #3412623, as shown.

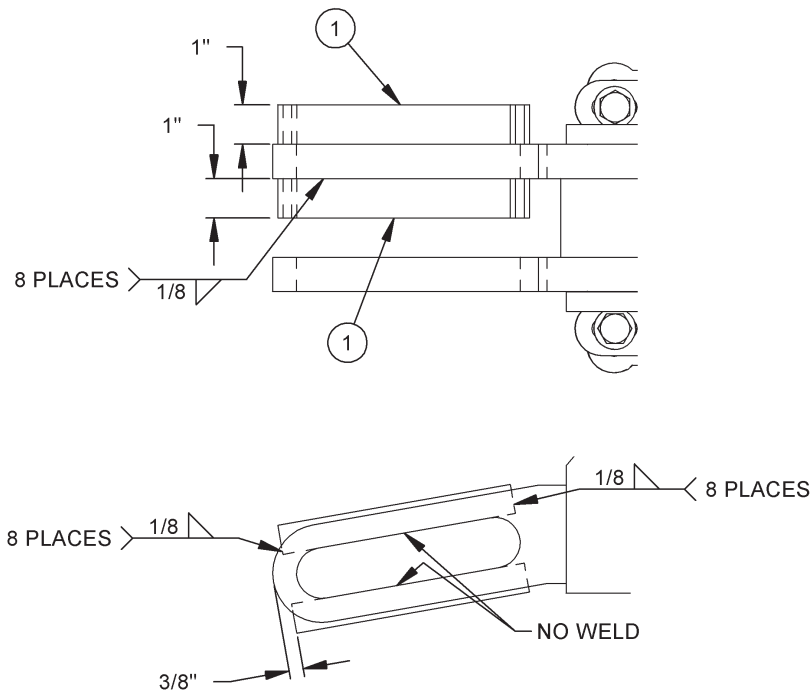
FIGURE 3
BAR LOCATION ORIENTATION



Repairing And Reinforcing Worn Slotted Arms

- See Figure 4. Locate and clamp bars (1) in place as shown. Before welding the bars in place, insert long square bar, HTT Part #3412616, in the slot and move it to the front and rear of the slot. Make sure it moves freely. If not, adjust the location of the bars (1). Remove the long square bar. Weld bars (1) in place referring to the weld symbols.

FIGURE 4
LOCATING BARS AND WELDING

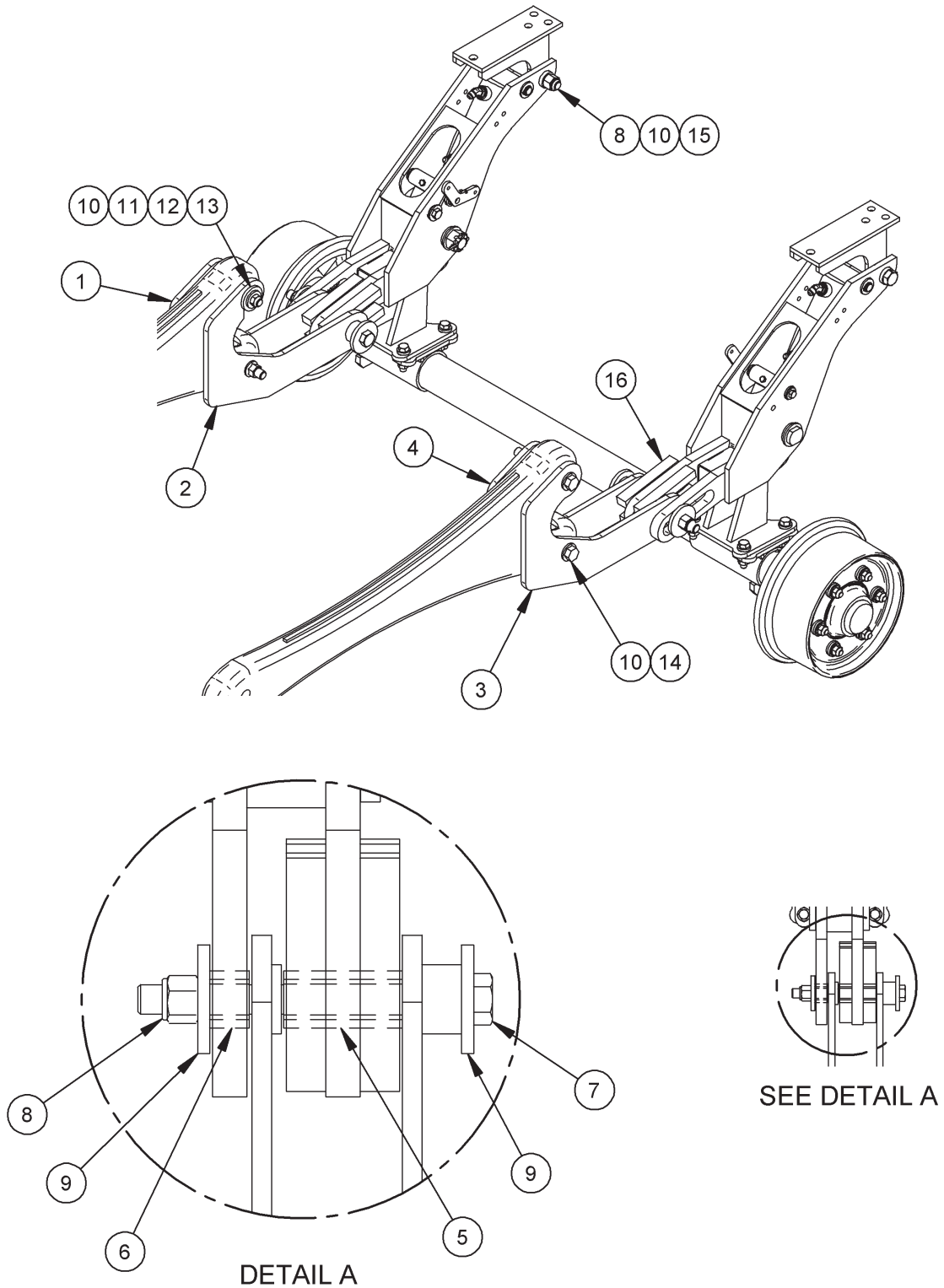


Mounting Guide Wheel Unit - See Figure 5

- Attach the rear mounting brackets (1, 2, 3 and 4) to the vehicle suspension using fasteners (10, 11, 12, 13, & 14) as shown.
- Locate the guide wheel unit under the vehicle. Attach the front of the guide wheel unit to the vehicle frame using fasteners (8, 10 & 15) as shown.
- Locate the long square bar (5) and short square bar (6) as shown. Using the 3/4-10 x 8-1/2" hex head cap screw (7), 3/4" washers (9) and 3/4" hex elastic stop nut (8), attach the slotted arms on the guide wheel unit to the rear mounting brackets.
- Reconnect the hydraulic hoses to the hydraulic cylinders.
- Align the guide wheel unit. Refer to the alignment procedure in the Adjustment Section of the Operator's Service and Parts Manual Bulletin #1542.

Mounting Guide Wheel Unit

FIGURE 5
MOUNTING GUIDE WHEEL UNIT



3412622 Upgrade Parts Kit

ITEM	PART NO	DESCRIPTION	QTY
	3412622	UPGRADE PARTS KIT	1
1	3412619	Mounting Plate, Left Outer	1
2	3412618	Mounting Plate, Left Inner	1
3	3412624	Mounting Plate, Right Outer	1
4	3412620	Mounting Plate, Right Inner	1
5	3412616	Square Bar, Long	2
6	3412617	Square Bar, Short	2
7	700568850	Cap Screw, 3/4-10 x 8-1/2" Hex Hd	2
8	F013633	Hex Elastic Stop Nut, 3/4"-10	2
9	F002278	Washer, 3/4"	4
10	F002929	SAE Washer, 3/4"	11
11	F002983	Washer, 1-1/4"	1
12	204153	Hex Half Nut, M18 x 2.5	1
13	204154	Cap Screw, M18 x 2.5 x 140 mm Hex Hd	1
14	204155	Cap Screw, M18 x 2.5 x 150 mm Hex Hd	3
15	3409146	Cap Screw, 3/4-10 x 6-1/2" GR 8 Hex Hd	2
16	3412623	Bar, 3/4 x 1"	8

© 2007 HARSCO TRACK TECHNOLOGIES, HARSCO CORPORATION

415 North Main Street
Fairmont, MN
56031-1837
Tel: (507) 235-3361
Fax: (507) 235-7370

2401 Edmund Road, Box 20
Cayce-West Columbia, SC
29171-0020
Tel: (803) 822-9160
Fax: (803) 822-7471

200 South Jackson Road
Ludington, MI
49431
Tel: (231) 843-3431
Fax: (231) 843-1644

Printed In U.S.A.