



Harsco Track Technologies

Harsco

www.harscotrack.com

SERVICE BULLETIN MAINTENANCE OF WAY EQUIPMENT

DATE: 10 - 2007

BULLETIN NO: 07-014

TITLE: 3412227 Stub Axle Service Group

RATING:

<input type="checkbox"/>	ALERT (Potential Problem)	<input checked="" type="checkbox"/>	INFORMATION (Action Is Optional)
<input type="checkbox"/>	DIRECTIVE (Action Is Required)	<input type="checkbox"/>	PRODUCT IMPROVEMENT (Enhance Product)

PRODUCT SERIES / MODEL: HR1500 Series B HY-RAIL® Guide Wheel Units.

SERIAL NO: N/A

SUMMARY: It has come to the attention of Harsco Track Technologies that there is a clearance problem between the stub axle on the HR1500 Series B Guide Wheel Unit and a newly designed high lift frog. Therefore, Harsco Track Technologies has developed a new stub axle to help correct this problem. If you are experiencing clearance problems with the original stub axle in special track structures, Harsco Track Technologies recommends that you install the 3412227 Stub Axle Service Group.

OPERATIONAL IMPACT: The installation of the new stub axles will help prevent contact of the guide wheel unit with special track structures which could result in damage to the track structures and / or the guide wheel units.

ACTION: The 3412227 Stub Axle Service Group must be installed at an approved HY-RAIL® guide wheel equipment repair facility. After installation of the service group, the guide wheel equipment needs to be aligned and the vehicle track tested.

CONTACT: If you have any questions or if we can be of any service, please contact the Fairmont, MN facility, HY-RAIL® Guide Wheel Equipment Service Department at (507) 235-7212 or to order parts, contact the Parts Department at (507) 235-7143 or (507) 235-7191.

Safety Information

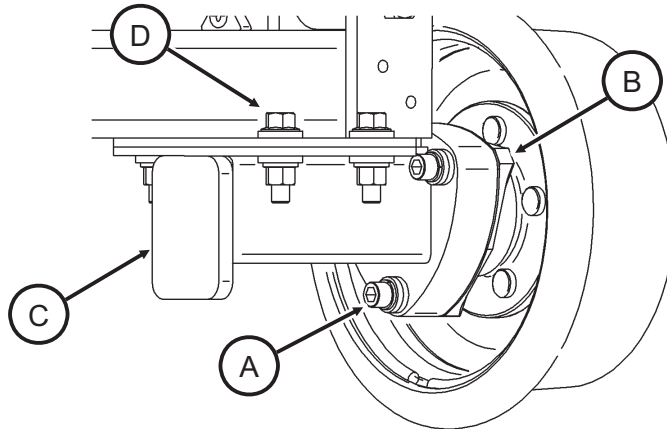


- FOLLOW APPLICABLE LOCKOUT - TAGOUT PROCEDURE TO DISABLE ENERGY SOURCES WHEN PERFORMING MAINTENANCE, MAKING ADJUSTMENTS OR REPAIRS TO THE VEHICLE OR EQUIPMENT. FAILURE TO HEED THIS WARNING COULD RESULT IN SEVERE BODILY INJURY.

Removing Old Stub Axle - See Figure 1

1. Remove the three hex socket head mounting bolts and washers (A) that secure the integral spindle (B) to the stub axle (C). Discard the fasteners and washers as they will not be re-used. Remove the integral spindle and wheel (B) from stub axle (C). If any insulating material is attached to the integral spindle, remove and discard it as a new insulation components are supplied in the service group. Clean the old Loctite from the threaded holes in the integral spindle.
2. Remove the hex nuts, bolts and washers (D). Inspect these items for wear or damage. If worn or damaged, they must be replaced with new ones when reassembling. If they are acceptable for reuse, do not discard them as they will be used to mount the new stub axle. Remove and discard the old stub axle (C).

FIGURE 1
REMOVING OLD STUB AXLE



Installing New Stub Axle - See Figures 2 and 3

1. Place the new stub axle in a vice and assemble the integral spindle and wheel to it before mounting it to the axle assembly.
2. Place the three insulating bushings (3) inside the three holes in the stub axle (1).
3. Place the insulating plate (7) and Insulating bushing (6) on to the integral spindle (B). Place the integral spindle (B) on stub axle (1) and secure with flat washers (4), lock washers (5) and socket head cap screw (2). Coat the cap screw threads with Loctite 242 Blue (8) before inserting. Torque the cap screws (2) to 60 lb-ft (80 N-m). Check to ensure that there is no continuity between the guide wheel and the stub axle.

Installing New Stub Axle - See Figures 2 and 3

4. If the guide wheel unit is equipped with grease guards, the grease guards will need to be modified by removing some material to allow installation of the new stub axle.
5. Secure the stub axle (1) to the axle assembly (E) using hex nuts, bolts and washers (D).
6. After replacing both stub axles on the common axle assembly, the guide wheel unit back flange gauge will have to be set. Measure from the back of the left wheel flange, directly below the center line of the wheel spindle, to the same point on the right wheel flange. This dimension must be 53-3/8 - 53-1/2 inches (1356 - 1359 mm).
7. Follow the procedure to replace the stub axles on the other guide wheel unit on the vehicle.
8. After the stub axles have been replaced on both guide wheel units, the Guide Wheel Equipment Alignment Procedure must be completed. See the Operator's Service and Parts Manual for the procedure. Make sure to torque fasteners (D) to 110 ft-lbs (150 N-m) after all adjustments have been made.
9. After completion of the alignment procedure, track test the vehicle to ensure proper rail operation. Correct misalignment as needed.

FIGURE 2
INSTALLING NEW STUB AXLE

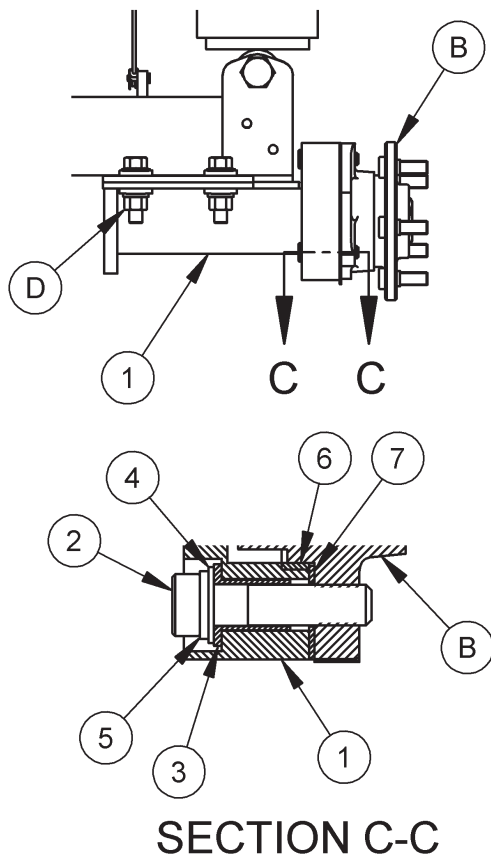
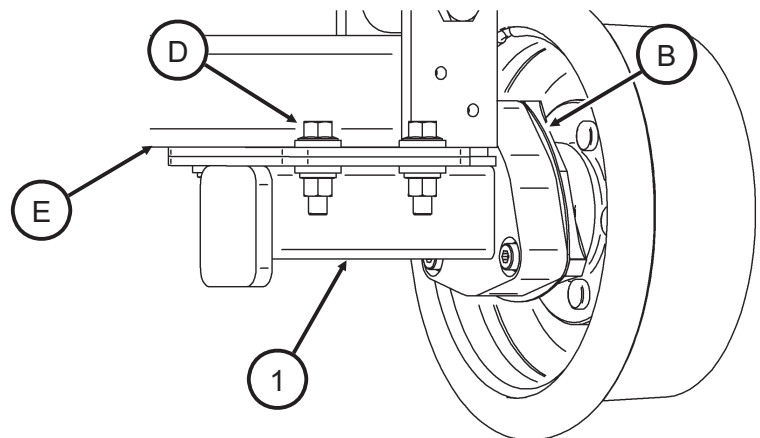


FIGURE 3
INSTALLING NEW STUB AXLE



3412227 Stub Axle Service Group

Note: Order one group for each front or rear guide wheel unit.

ITEM	PART NO	DESCRIPTION	QTY
	3412227	STUB AXLE SERVICE GROUP.....	1
1	3411970	Stub Axle	2
2	3411995	Cap Screw, M12 x 1.75 x 50 mm Hex Soc Low Hd	6
3	3411967	Insulated Bushing	6
4	F008570	Washer, Plain	6
5	150791	Lock Washer, 12 mm	6
6	200417	Insulated Bushing	2
7	200415	Insulated Plate	2
8	F015774	Loctite-242 Blue	1

© 2007 HARSCO TRACK TECHNOLOGIES, HARSCO CORPORATION

415 North Main Street
Fairmont, MN
56031-1837
Tel: (507) 235-3361
Fax: (507) 235-7370

2401 Edmund Road, Box 20
Cayce-West Columbia, SC
29171-0020
Tel: (803) 822-9160
Fax: (803) 822-7471

200 South Jackson Road
Ludington, MI
49431
Tel: (231) 843-3431
Fax: (231) 843-1644

Printed In U.S.A.