



www.harscorail.com

SERVICE BULLETIN

MAINTENANCE OF WAY EQUIPMENT

DATE: 2-2013

BULLETIN NO: 13-002

TITLE: Upper Structure Inspection / Rework

RATING:

<input type="checkbox"/>	DIRECTIVE (Action Is Required)	<input checked="" type="checkbox"/>	ALERT (Potential Problem)
<input type="checkbox"/>	INFORMATION (Action Is Optional)	<input type="checkbox"/>	PRODUCT IMPROVEMENT (Enhance Product)

PRODUCT SERIES / MODEL: HR3000 Series B Rear HY-RAIL® Guide Wheel Unit

SERIAL NO: 60100 Through 63561

SUMMARY: Harsco Rail has become aware of a possible weld issue on the upper structure on certain HR3000 Series B Rear HY-RAIL® Guide Wheel Units. On affected equipment, the involved weld could break. Harsco Rail is requesting that you review the serial number on your HR3000 Series B HY-RAIL® Guide Wheel Unit. If the serial number on your guide wheel unit is included in the group listed above, you will need to visually inspect the welded area shown in Figure 1. If there is any indication of defective welds or cracks, remove the vehicle from service and take it to the nearest approved HY-RAIL® guide wheel equipment repair facility for repairs.

OPERATIONAL IMPACT: The affected vehicle / equipment should be removed from service if it is determined that repairs are needed. The vehicle may be returned to service once repairs are completed.

ACTION: Owners of HR3000 Series B Rear HY-RAIL® Guide Wheel Units: Verify the serial number on your HR3000 Series B Rear HY-RAIL® Guide Wheel Unit. The serial number plate is located on the upper structure of the unit. If the serial number is included in the group listed above, the vehicle should be removed from service and taken to the nearest approved HY-RAIL® guide wheel equipment repair facility.

CONTACT: Parts Sales: (507) 235-7143
Service: (507) 235-7212 or (507) 235-7137

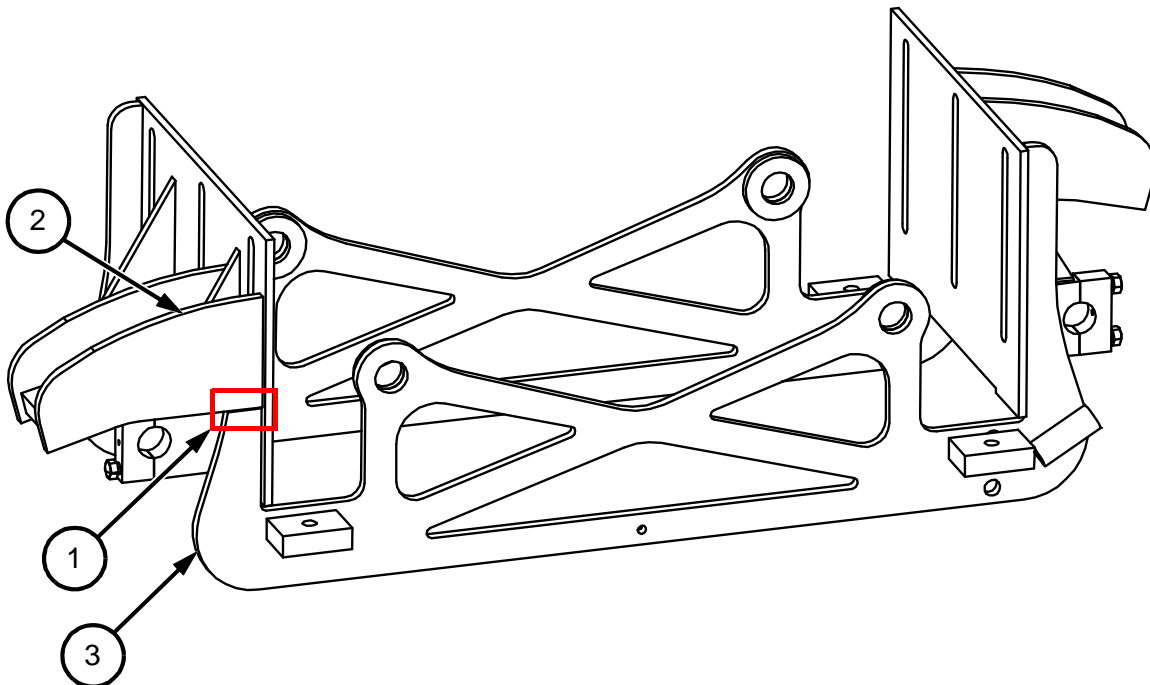
Safety Information

- **FOLLOW APPLICABLE RAILROAD LOCKOUT - TAGOUT PROCEDURES TO DISABLE ENERGY SOURCES WHEN PERFORMING MAINTENANCE, MAKING ADJUSTMENTS OR REPAIRS TO THE VEHICLE OR EQUIPMENT. FAILURE TO HEED THIS WARNING COULD RESULT IN SEVERE BODILY INJURY.**

Upper Structure Inspection - See Figure 1

1. Make sure the vehicle trans//mission is in PARK or NEUTRAL and the parking brakes are applied. Stop the vehicle engine. Lock-out / Tag-out vehicle ignition switch.
2. On both corners of the upper structure, inspect the weld in area (1) between plates (2) and (3). If the weld is defective or any cracks are found around the weld, remove the vehicle from service and take it to the nearest approved HY-RAIL® guide wheel equipment repair facility for repairs.

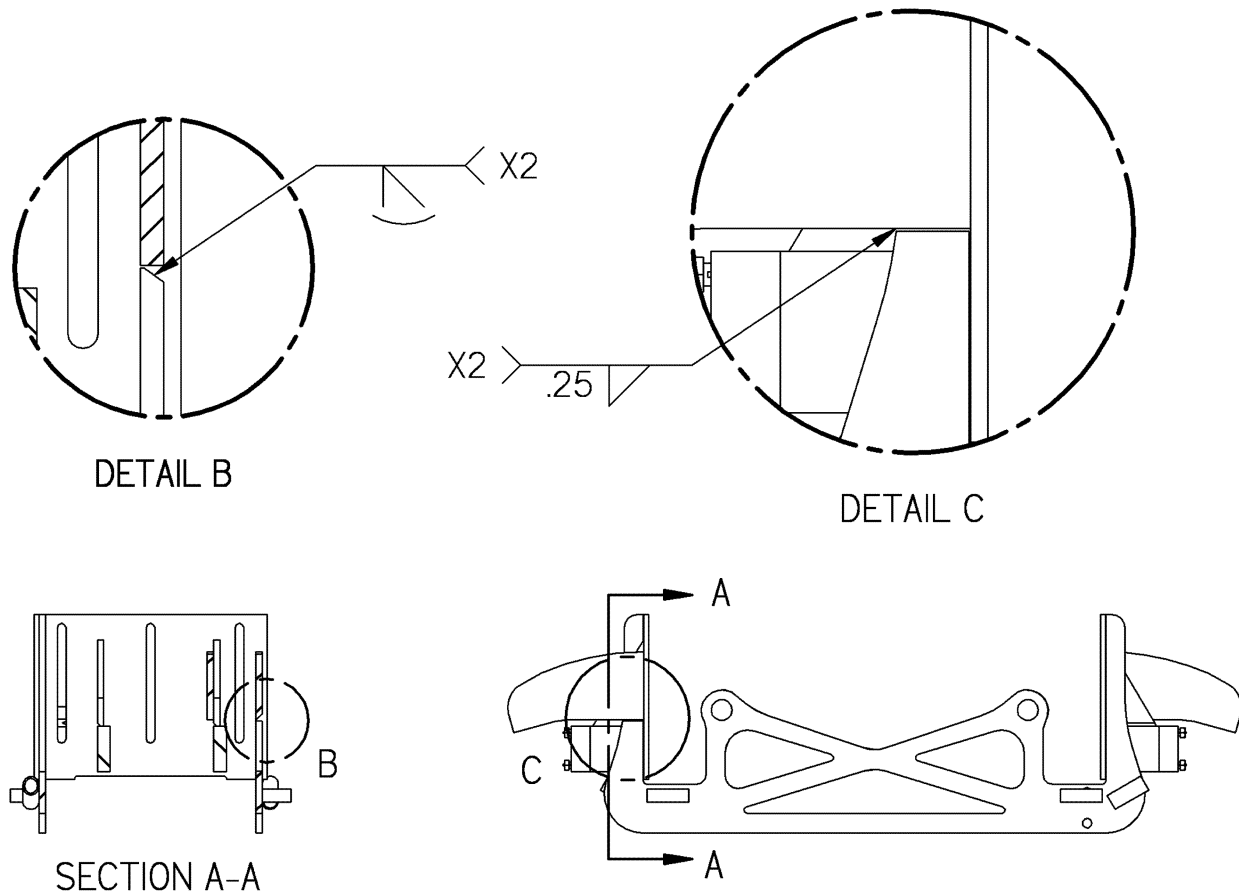
FIGURE 1
UPPER STRUCTURE



Re-Welding Upper Structure - See Figures 1 and 2

1. Inspect plates (2 and 3) to ensure they are not bent or distorted. Make sure plates (2) and (3) are aligned properly.
2. Grind the old weld area out to achieve a bevel as shown in Figure 2, Detail B. Clean all paint, grease and dust from the area that is going to be welded.
3. Re-weld the upper structure using the welding instructions provided by the weld symbols shown in Figure 2.
4. After welding, clean and paint the welded areas. Once the repairs are completed, the vehicle can be returned to service.

FIGURE 2
RE-WELDING UPPER STRUCTURE



© 2013 HARSCO CORPORATION, ALL RIGHTS RESERVED

415 North Main Street
Fairmont, MN
56031-1837
Tel: (507) 235-3361
Fax: (507) 235-7370

401 Edmund Road, Box 20
Cayce-West Columbia, SC
29171-0020
Tel: (803) 822-9160
Fax: (803) 822-7471

200 South Jackson Road
Ludington, MI
49431
Tel: (231) 843-3431
Fax: (231) 843-1644

Printed In USA