



Harsco Track Technologies

Harsco

www.harscotrack.com

SERVICE BULLETIN MAINTENANCE OF WAY EQUIPMENT

DATE: 9-8-2004 **BULLETIN NO:** 04-008

TITLE: REINFORCEMENT GROUP #203160

RATING:

<input type="checkbox"/>	DIRECTIVE (Action Is Required)	<input type="checkbox"/>	ALERT (Potential Problem)
<input checked="" type="checkbox"/>	INFORMATION (Action Is Optional)	<input type="checkbox"/>	PRODUCT IMPROVEMENT (Enhance Product)

PRODUCT SERIES / MODEL: All Vehicles Equipped With HY-RAIL® Guide Wheel Equipment Series HR3000V or HR4000V Vertical Front Rail Pilot Units.

SERIAL NO: All HR3000V and HR4000V Vertical Front Rail Pilot Unit Models

SUMMARY: Under certain operating conditions, stress cracks have been found to develop in the lower support brace located in-between the spring cells of the front rail pilot unit frame. Inspect the lower support brace for cracks. If any cracks are found and it is desired to reinforce the support brace, a Reinforcement Group #203160 is available.

OPERATIONAL IMPACT: The stress cracks in the lower support brace are not a structural defect and will not affect the operation of the front rail pilot unit.

ACTION: Inspect the lower support brace in-between the spring cells of the front rail pilot unit for cracks. If any cracks are found and it is desired to reinforce the support brace, order one Reinforcement Group #203160 per vehicle.

CONTACT: If you have any questions or if we can be of any service, please contact the HY-RAIL® Service Department at the Fairmont, MN. facility, (507) 235-7212. To order the Reinforcement Group #203160, please contact the HY-RAIL® Parts Department at the Fairmont, MN. facility (507) 235-7143.

SAFETY INFORMATION

n **FOLLOW APPLICABLE RAILROAD LOCKOUT - TAGOUT PROCEDURE TO REMOVE ALL ENERGY SOURCES FROM VEHICLE AND RAIL GUIDE WHEEL EQUIPMENT.**

n **BEFORE WELDING ON VEHICLE, DISCONNECT ALL ELECTRICAL CABLES FROM VEHICLE BATTERY AND ALTERNATOR. ALSO REFER TO VEHICLE OPERATOR'S MANUAL FOR ANY ADDITIONAL PRECAUTIONS.**

FAILURE TO COMPLY COULD RESULT IN SEVERE BODILY INJURY.

SUPPORT BRACE INSPECTION - See Figure 1

1. Inspect the lower support brace located in-between the spring cells of front rail pilot unit frame for cracks as shown in Figure 1.
2. If any cracks are found and it is desired to reinforce the support brace, order one Reinforcement Group #203160 per vehicle and install per the Instructions in this Service Bulletin.

REINFORCEMENT GROUP INSTALLATION - See Figure 2 and Figure 3

3. **Important:** Before welding on the vehicle, disconnect all electrical cables from the battery and from the alternator. Also refer to the vehicle Operator's Manual for any additional precautions that must be taken before welding on the vehicle.
4. Thoroughly clean the existing support brace and spring cells of the front rail pilot unit frame of all dirt, grease, rust, etc. where the two support plates (1) will be welded to.
5. Lay the two support plates (1) on top of the lower support brace in-between the spring cells as shown in Figure 2 and weld in place per the weld symbols shown in Figure 3.

Note: Some applications may require grinding of the support plates (1) for a proper fit.

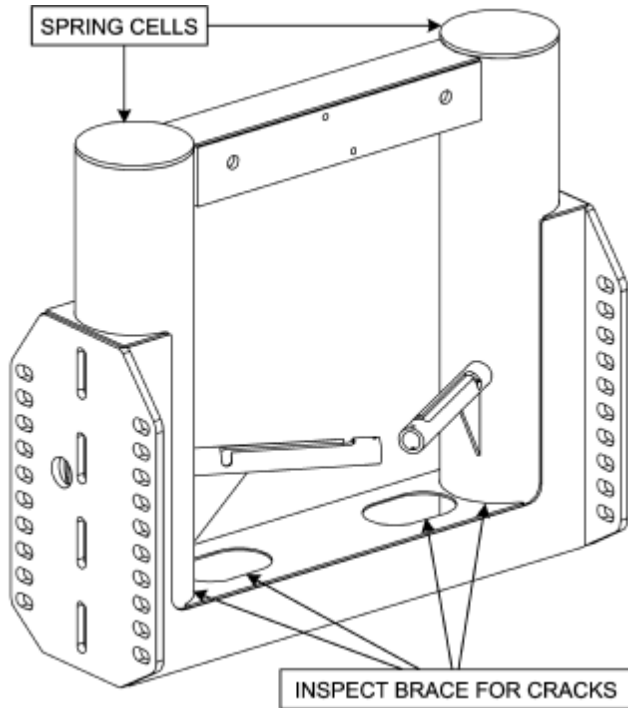
6. After welding, wire brush and clean all welds. Then paint all welds to prevent rust.
7. Reconnect all electrical cables that were disconnected.

REINFORCEMENT GROUP INSTALLATION

SE024539A-3

FIGURE 1

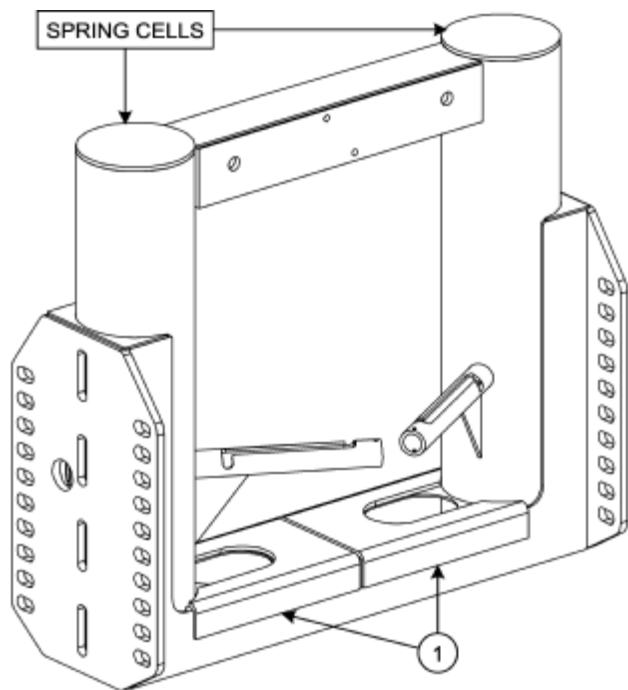
LOWER SUPPORT BRACE INSPECTION



SE024539A-1

FIGURE 2

REINFORCEMENT INSTALLATION

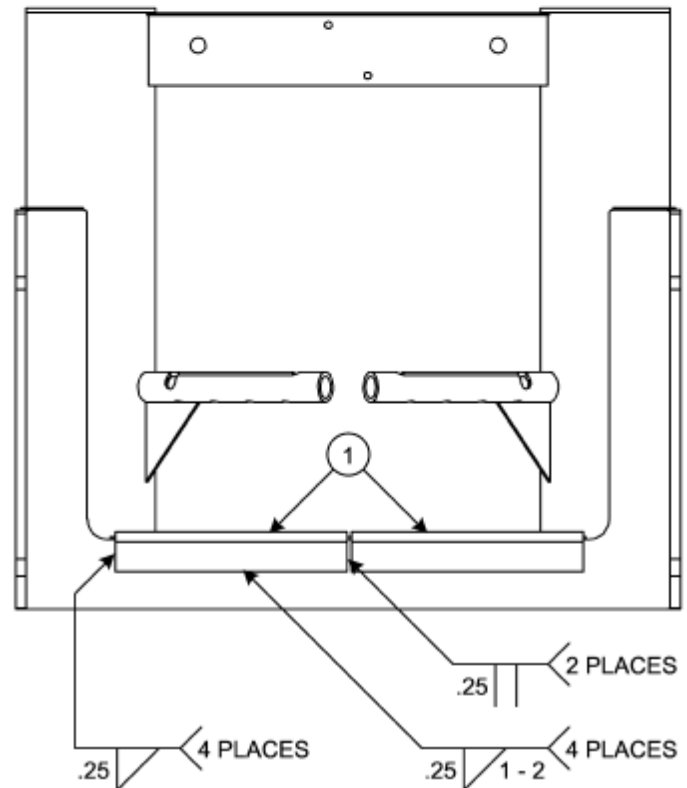
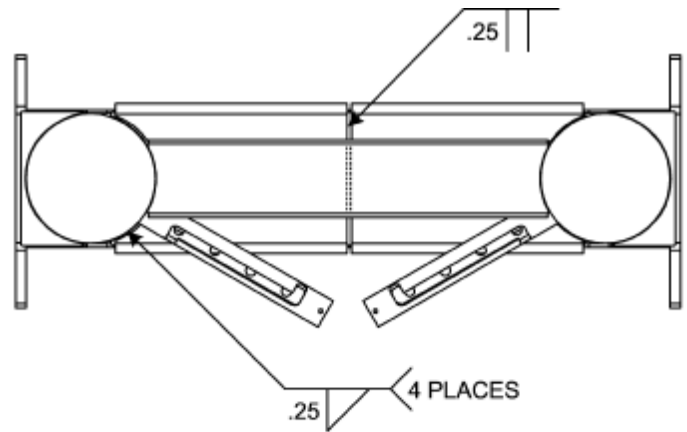


LAY SUPPORT PLATES (1) ON TOP OF LOWER SUPPORT BRACE IN-BETWEEN SPRING CELLS AND WELD IN PLACE.
NOTE: SOME APPLICATIONS MAY REQUIRE GRINDING OF THE SUPPORT PLATES (1) FOR PROPER FIT.

FIGURE 3

SE024539A-2

REINFORCEMENT WELDING



PARTS LIST - See Figure 2 or Figure 3

ITEM	PART NO	DESCRIPTION	QTY
	203160	REINFORCEMENT GROUP	1
1	202320	Support	2

© 2004 HARSCO TRACK TECHNOLOGIES, HARSCO CORPORATION

415 North Main Street
Fairmont, MN
56031-1837
Tel: (507) 235-3361
Fax: (507) 235-7370

2401 Edmund Road, Box 20
Cayce-West Columbia, SC
29171-0020
Tel: (803) 822-9160
Fax: (803) 822-7471

200 South Jackson Road
Ludington, MI
49431
Tel: (231) 843-3431
Fax: (231) 843-1644