



Harsco Track Technologies

Harsco

www.harscotrack.com

SERVICE BULLETIN MAINTENANCE OF WAY EQUIPMENT

DATE: 2-23-2005 **BULLETIN NO:** 05-002

TITLE: VEHICLE FRONT AXLE STOP BLOCK CLEARANCE

RATING: **DIRECTIVE** (Action Is Required) **ALERT** (Potential Problem)
 INFORMATION (Action Is Optional) **PRODUCT IMPROVEMENT** (Enhance Product)

PRODUCT SERIES / MODEL: All Vehicles Equipped with HY-RAIL® Guide Wheel Equipment Series HR3000C1 or HR4000C1 Front Rail Pilot Units.

SERIAL NO: All HR3000C1 and HR4000C1 Front Rail Pilot Unit Models

SUMMARY: The vehicle's front suspension components may have settled through normal operation and use, or through additional equipment or weight being added to the vehicle, causing the vehicle's front axle OEM stops to ride closer to the HTT stop blocks supplied with the front rail pilot unit.

OPERATIONAL IMPACT: To provide instructions on how to measure and record certain dimensions and help HTT determine if the stop blocks need to be modified.

ACTION: **Before scheduling the vehicle for inspection,** contact Julie Klages at 507-235-7191 at the Fairmont, MN. facility and order one Shim Kit p/n 203598 per each vehicle that is to be inspected. Follow the instructions in this Service Bulletin to measure and record certain dimensions on the vehicle. Then contact either of the specified HTT representatives to determine if the vehicle front axle stop blocks should be modified. Be sure to fax all recorded measurements, HY-RAIL® information and vehicle information to HTT whether your vehicle needs to be modified or not.

CONTACT: If you have any questions or if we can be of any service, please contact David Wald at 507-235-7256 or Roger Kusick at 507-235-7212 at the Fairmont, MN. facility.

SAFETY INFORMATION



n FOLLOW APPLICABLE RAILROAD LOCKOUT - TAGOUT PROCEDURE TO REMOVE ALL ENERGY SOURCES FROM VEHICLE AND RAIL GUIDE WHEEL EQUIPMENT. FAILURE TO COMPLY COULD RESULT IN SEVERE BODILY INJURY.

INSTRUCTIONS

1. **Before scheduling the vehicle for inspection**, contact Julie Klages at 507-235-7191 at the Fairmont, MN. facility and order one Shim Kit p/n 203598 per each vehicle that is to be inspected. The Shim Kit contains a quantity of eight 1/8 inch thick shims p/n 203569 that are used in Step 3 of the instructions.
2. Copy or print out Drawing #024659 Sheet 1 and Sheet 2 on Pages 3 and 4 of this Service Bulletin for reference, illustrations, instructions and recording of measurements and vehicle information.
3. Follow the Instructions on Drawing #024659 Sheet 2 on Page 4.
4. Refer to the illustrations on Drawing #024659 Sheet 1 on Page 3 for help in measuring of the required Dimensions "A", "B", "C" and "D".
5. Record all measurements, HY-RAIL® information and vehicle information on the right side of Drawing #024659 Sheet 2 on Page 4. Then contact either of the following HTT Representatives to discuss your measurements.

David Wald Office: 507-235-7256. Cell: 803-767-8472

Roger Kusick Office: 507-2357212 Cell: 803-315-9312

6. If the HTT Representative determines that your vehicle does not need to be modified, then fax Drawing #024659 Sheet 2 on Page 4 with all recorded measurements and information to HY-RAIL® Service Department at 507-235-7175.
7. If the HTT Representative determines that your vehicle should be modified, make the necessary modifications as stated in the instructions. After the modifications are made, re-measure and record all Dimensions "A", "B", "C" and "D" again. Then fax Drawing #024659 Sheet 2 on Page 4 with all recorded measurements and information to HY-RAIL® Service Department at 507-235-7175.

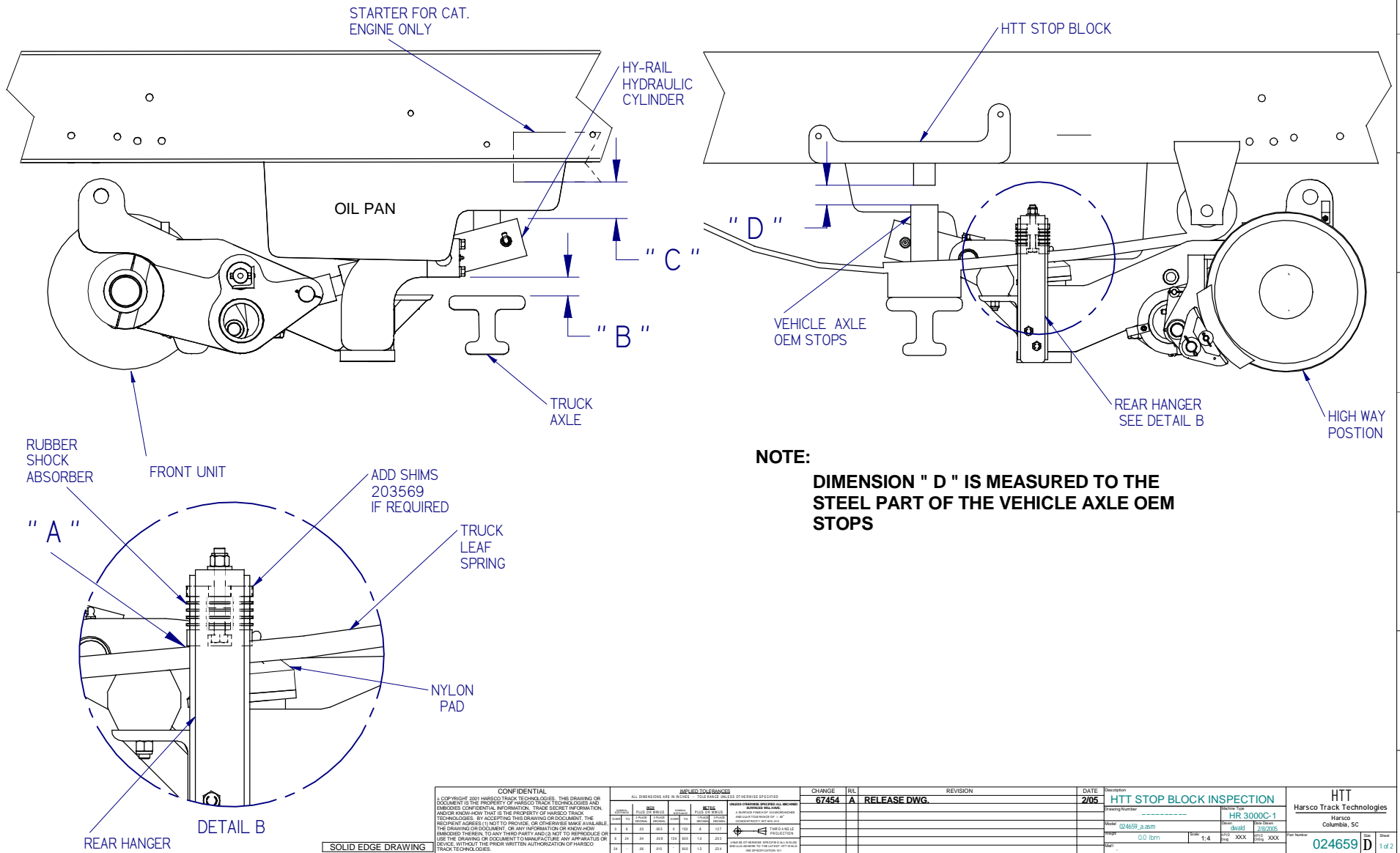
© 2005 HARSCO TRACK TECHNOLOGIES, HARSCO CORPORATION

415 North Main Street
Fairmont, MN
56031-1837
Tel: (507) 235-3361
Fax: (507) 235-7370

2401 Edmund Road, Box 20
Cayce-West Columbia, SC
29171-0020
Tel: (803) 822-9160
Fax: (803) 822-7471

200 South Jackson Road
Ludington, MI
49431
Tel: (231) 843-3431
Fax: (231) 843-1644

HTT FRONT HY-RAIL HR 3000 C-1 / 4000 C-1



<p>CONFIDENTIAL</p> <p>© COPYRIGHT 2001 HARSCO TRACK TECHNOLOGIES. THIS DRAWING OR DOCUMENT IS THE PROPERTY OF HARSCO TRACK TECHNOLOGIES AND EMPLOYEES CONFIDENTIAL INFORMATION, TRADE SECRET INFORMATION, AND/OR KNOW-HOW THAT IS THE PROPERTY OF HARSCO TRACK TECHNOLOGIES. BY ACCEPTING THIS DRAWING OR DOCUMENT, THE RECIPIENT AGREES (1) NOT TO PROVIDE OR OTHERWISE MAKE AVAILABLE THE DRAWING OR DOCUMENT, OR ANY INFORMATION OR KNOW-HOW DERIVED THEREIN, TO ANY THIRD PARTY AND (2) TO REPRODUCE OR USE THE DRAWING OR DOCUMENT TO MANUFACTURE ANY APPARATUS OR DEVICE WITHOUT THE PRIOR WRITTEN AUTHORIZATION OF HARSCO TRACK TECHNOLOGIES.</p>		<p>APPROVED LEVERANGES</p> <p>ALL DIMENSIONS ARE IN INCHES UNLESS OTHERWISE SPECIFIED</p>		<p>CHANGE 67454 A RELEASE DWG.</p>		<p>REVISION</p>		<p>DATE 2/05</p>		<p>HTT STOP BLOCK INSPECTION</p>		<p>HTT Harco Track Technologies Harco Columbia, SC</p>	
DATE	BY	DATE	BY	DATE	BY	DATE	BY	DATE	BY	DATE	BY	DATE	BY
<p>Scale: 0.0 (mm)</p>										<p>Plot Number: 024659</p>		<p>Sheet: D of 2</p>	
<p>Plotted by: dwald on 2/21/2005 024659_a.dft</p>													

INSTRUCTIONS:

- PLACE THE FRONT HY-RAIL® UNIT IN THE RAIL POSITION. MEASURE AND RECORD THE FOLLOWING DIMENSIONS.
- MEASURE DIMENSION "A" – THE DISTANCE BETWEEN THE BOTTOM OF THE RUBBER SHOCK ABSORBER AND THE TOP OF THE LEAF SPRING. THE RUBBER SHOCK ABSORBER IS LOCATED ON THE PASSENGER SIDE OF THE VEHICLE ON THE REAR HANGER OF THE HY-RAIL® UNIT.
- USING SHIMS P/N 203569, INSERT SHIMS ON THE TOP OF THE RUBBER SHOCK ABSORBER TO OBTAIN NO CLEARANCE (0 INCH) AT DIMENSION "A" BEFORE PROCEEDING.
FOR EXAMPLE: IF 5/16 INCH CLEARANCE IS MEASURED, ADD THREE 1/8 INCH THICK SHIMS OR 3/8 INCH TOTAL THICKNESS.
- PLACE THE FRONT HY-RAIL® UNIT IN THE HIGHWAY POSITION. MEASURE AND RECORD THE FOLLOWING DIMENSIONS.
- MEASURE DIMENSION "B" – THE DISTANCE BETWEEN THE BOTTOM OF THE CYLINDER ON THE HY-RAIL® UNIT DOWN TO THE TOP OF THE FRONT VEHICLE AXLE.
- MEASURE DIMENSION "C" CATERPILLAR ENGINES ONLY – THE DISTANCE BETWEEN THE TOP OF THE HY-RAIL® CYLINDER UP TO THE BOTTOM OF THE STARTER. THE STARTER IS LOCATED ON THE DRIVER SIDE OF THE VEHICLE.
- MEASURE DIMENSION "D" – THE DISTANCE FROM THE BOTTOM OF THE HTT STOP BLOCKS DOWN TO THE TOP OF THE VEHICLE FRONT AXLE OEM STOPS ON BOTH SIDES. BE SURE TO MEASURE TO THE STEEL PART OF THE OEM STOPS.
- RECORD ALL MEASUREMENTS, HY-RAIL® INFORMATION AND VEHICLE INFORMATION TO THE RIGHT. THEN CONTACT EITHER OF THE FOLLOWING HTT REPRESENTATIVES TO DISCUSS YOUR MEASUREMENTS.

DAVID WALDOFFICE: 507-235-7256.....CELL: 803-767-8472
ROGER KUSICKOFFICE: 507-235-7212.....CELL: 803-315-9312
- IF THE HTT REPRESENTATIVE DETERMINES THAT YOUR VEHICLE DOES NOT NEED TO BE MODIFIED, THEN FAX THIS SHEET WITH ALL RECORDED MEASUREMENTS AND INFORMATION TO HTT AT 507-235-7175.
- IF THE HTT REPRESENTATIVE DETERMINES THAT YOUR VEHICLE SHOULD BE MODIFIED, THEN DIMENSION "D" WILL BE MODIFIED TO BE 1/4 INCH LESS THAN DIMENSION "B".
FOR EXAMPLE: IF DIMENSION "B" IS 1-3/4 INCHES, THEN DIMENSION "D" WILL BE MODIFIED TO 1-1/2 INCHES.
- TO MODIFY DIMENSION "D", REMOVE BOTH HTT STOP BLOCKS FROM THE VEHICLE. REMOVE MATERIAL FROM (BY CUTTING OFF) OR ADD MATERIAL TO (BY WELDING ON) THE BOTTOM OF THE STOP BLOCKS. REINSTALL BOTH STOP BLOCKS TO THE VEHICLE.
- REMEASURE ALL DIMENSIONS "A", "B", "C" & "D" AND RECORD TO THE RIGHT. THEN FAX THIS SHEET WITH ALL RECORDED MEASUREMENTS AND INFORMATION TO HTT AT 507-235-7175.

FAX THIS SIDE TO 507-235-7175

DIMENSIONS BEFORE:

A =

B =

C =

D =

DIMENSIONS AFTER:

A=

B=

C=

D=

UNIT INFORMATION

MODEL OF HY-RAIL

MILES ON TRUCK

UNIT NUMBER

SERVICE CENTER

ACTION TAKEN

DATE

SOLID EDGE DRAWING

CONFIDENTIAL <small>© COPYRIGHT 2001 HARSCO TRACK TECHNOLOGIES. THIS DRAWING OR DOCUMENT IS THE PROPERTY OF HARSCO TRACK TECHNOLOGIES AND EMPLOYEES CONFIDENTIAL INFORMATION, TRADE SECRET INFORMATION, AND/OR KNOW-HOW THAT IS THE PROPERTY OF HARSCO TRACK TECHNOLOGIES. BY ACCEPTING THIS DRAWING OR DOCUMENT, THE RECIPIENT AGREES (1) NOT TO PROVIDE OR OTHERWISE MAKE AVAILABLE THE DRAWING OR DOCUMENT, OR ANY INFORMATION OR KNOW-HOW DERIVED THEREIN, TO ANY THIRD PARTY AND (2) TO REPRODUCE OR USE THE DRAWING OR DOCUMENT TO MANUFACTURE ANY APPARATUS OR DEVICE, WITHOUT THE PRIOR WRITTEN AUTHORIZATION OF HARSCO TRACK TECHNOLOGIES.</small>		ALL DIMENSIONS ARE IN INCHES UNLESS OTHERWISE SPECIFIED		CHANGE 67454	DTL A	REVISION RELEASE DWG.	DATE 2/05	Description HTT STOP BLOCK INSPECTION	HTT HarSCO Track Technologies HarSCO Columbia, SC
MODEL P/N 203569	MODEL P/N 203569	MODEL P/N 203569	MODEL P/N 203569	MODEL P/N 203569	MODEL P/N 203569	MODEL P/N 203569	MODEL P/N 203569	MODEL P/N 203569	MODEL P/N 203569
Drawing Number 024659_a.dwg		Revision 1		Date 2/20/05		Part Name 024659		Part Number 024659	
Scale 1:4		Unit INCH		Sheet 2 of 2		Plot Date 2/21/2005		Plotter HP DesignJet 500	